

Report No.:

Test Time: 2024/10/8 9:34:10

## LUMINAIRE PHOTOMETRIC TEST REPORT

### Luminaire Property

Manufacturer: InBright  
 Luminaire Type: IBSP104CT095H124-15°-23.9W  
 Lamp Type:  
 Luminous Width: 90 mm  
 Luminous Length: 90 mm  
 Luminous Height: 75 mm

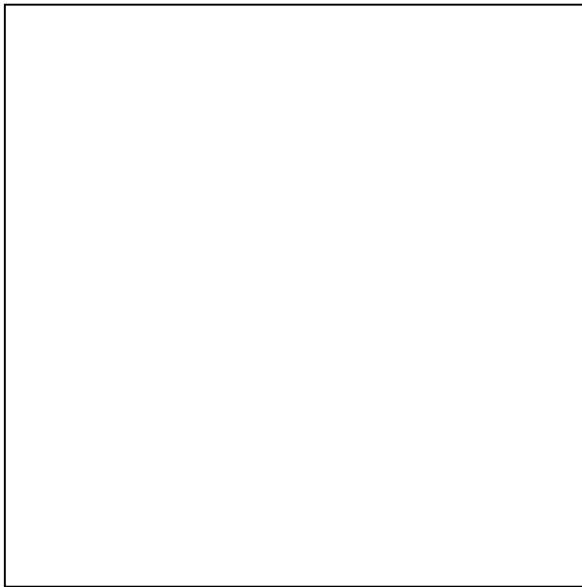
Voltage(V): 219.80 V  
 Current(A): 0.1130 A  
 Power(W): 23.93 W  
 Power Factor: 0.9610  
 Lamp Luminous Flux: 2203.50

### Photometric Results

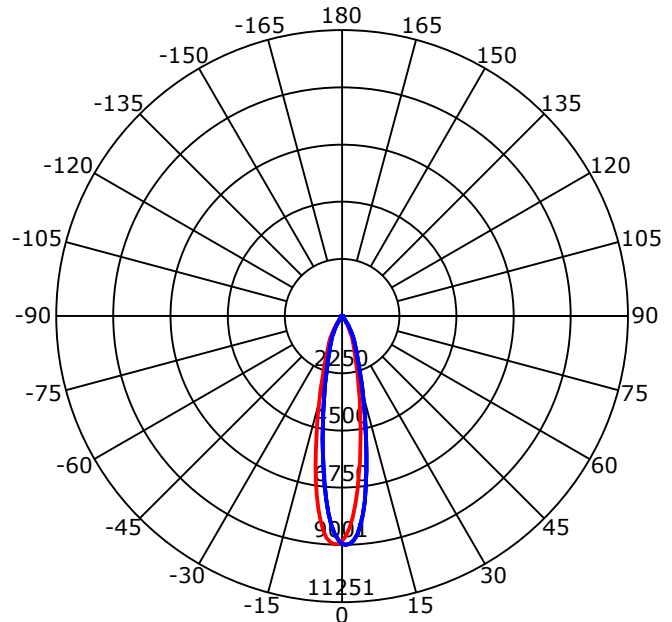
CIE Class: Direct  
 Luminaire Luminous Flux: 2203.5 lm  
 Downward Ratio: 100.00%  
 Luminaire Efficacy Rating(LER): 92.08 lm/W  
 Beam Angle(50%) C0-180,C90-270: 22.1,21.6  
 Field Angle(10%) C0-180,C90-270: 53.8,53.5  
 S/MH C0-180,C90-270: 0.389,0.389

Max. Intensity: 9000.53 cd  
 Max.Intensity Angle: C=90 Gamma=1  
 Upward Ratio: 0.00%  
 Efficacy: 100.00%  
 Center Intensity: 8845.87 cd  
 Effective Luminous Flux: 1814.18 lm  
 ERP( $\varphi$ use)(120deg): 2194.64 lm

Picture of Luminaire



Luminous Intensity Distribution Curve



Beam Angle(50%) C0-180,C90-270: 22.1 deg,21.6 deg

C0-180 — C90-270 —

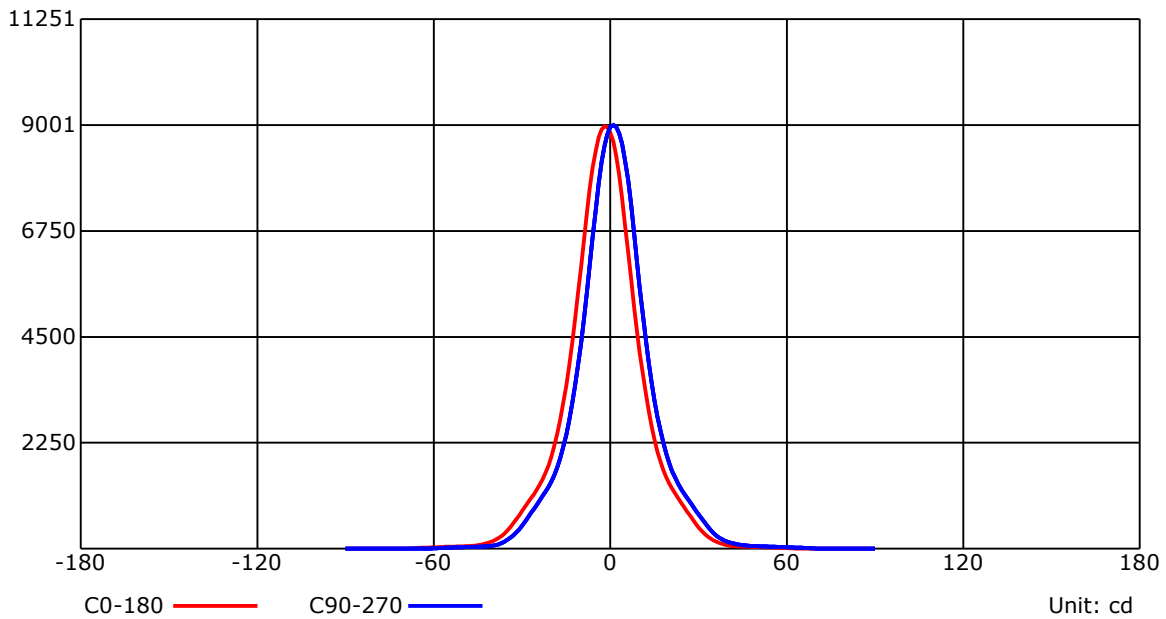
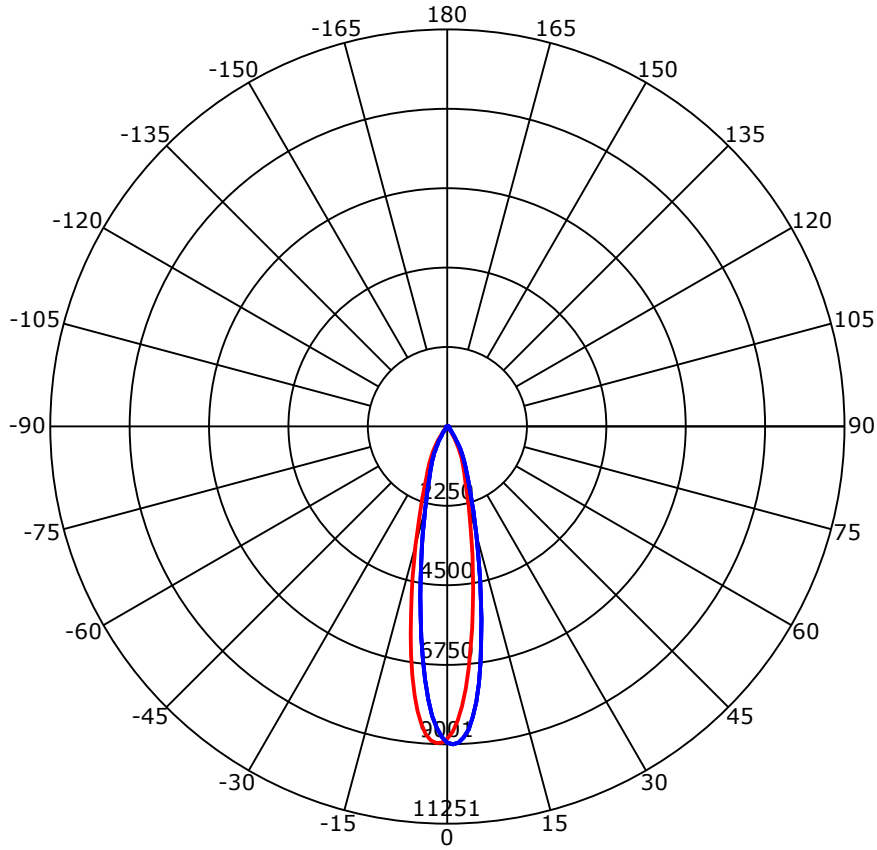
C Range: 0 - 360 Deg  
 C Interval: 45.0 Deg  
 Test Speed: High  
 Temperature: 25  
 Operators: QC01  
 Test Date: 2024/10/8 9:34:10

G Range: 0 - 90 Deg  
 G Interval: 1.0 Deg  
 Test System: Huipu CPM-1600B Goniophotometer  
 Humidity: 60  
 Test Distance: 6.81 m  
 Remarks:

Report No.:

Test Time: 2024/10/8 9:34:10

## Luminous Intensity Distribution Curve



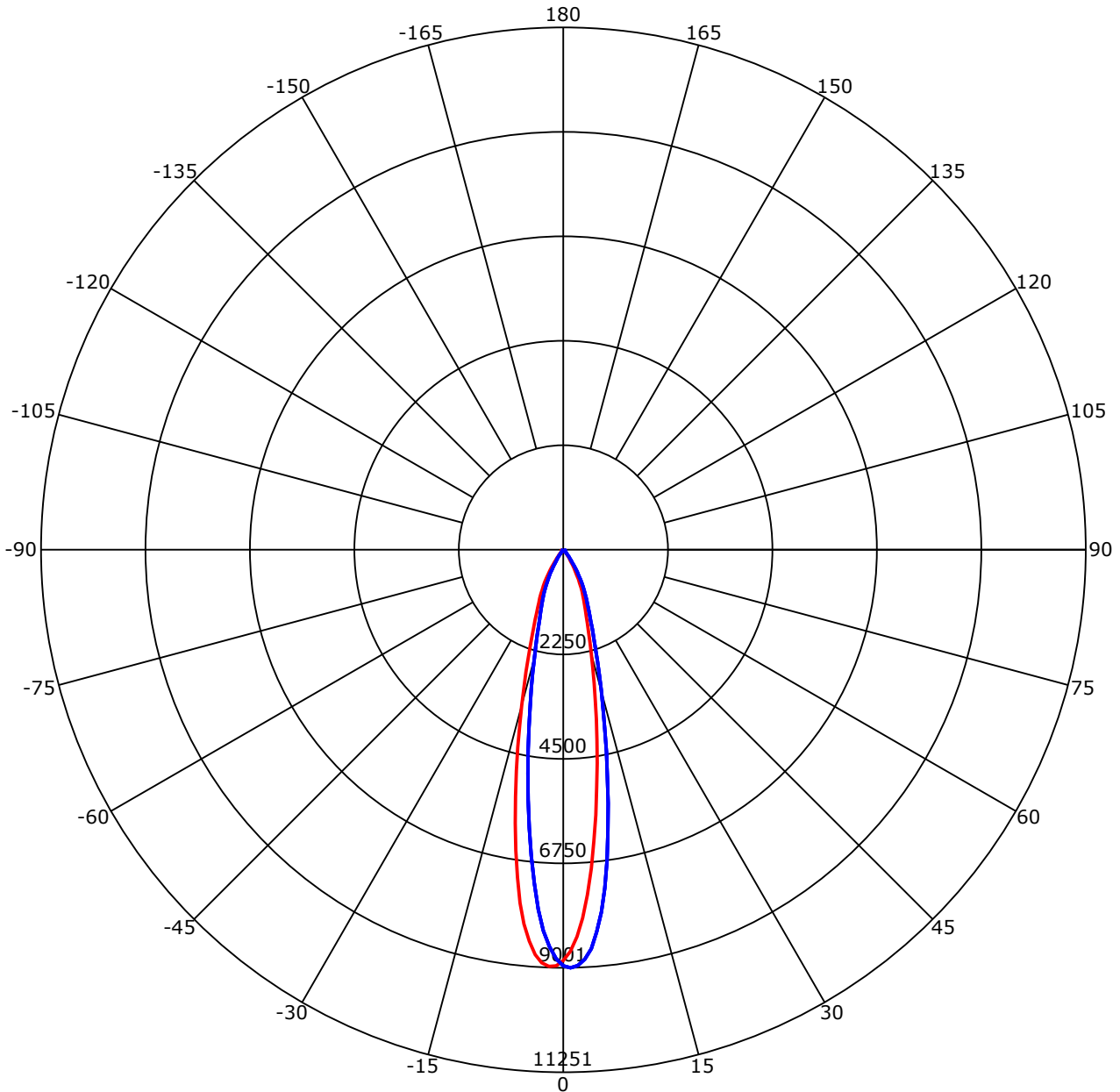
C Range: 0 - 360 Deg  
 C Interval: 45.0 Deg  
 Test Speed: High  
 Temperature: 25  
 Operators: QC01  
 Test Date: 2024/10/8 9:34:10

G Range: 0 - 90 Deg  
 G Interval: 1.0 Deg  
 Test System: Huipu CPM-1600B Goniophotometer  
 Humidity: 60  
 Test Distance: 6.81 m  
 Remarks:

Report No.:

Test Time: 2024/10/8 9:34:10

## Luminous Intensity Distribution Curve



C0-180 —    C90-270 —  
 Unit: cd/klm

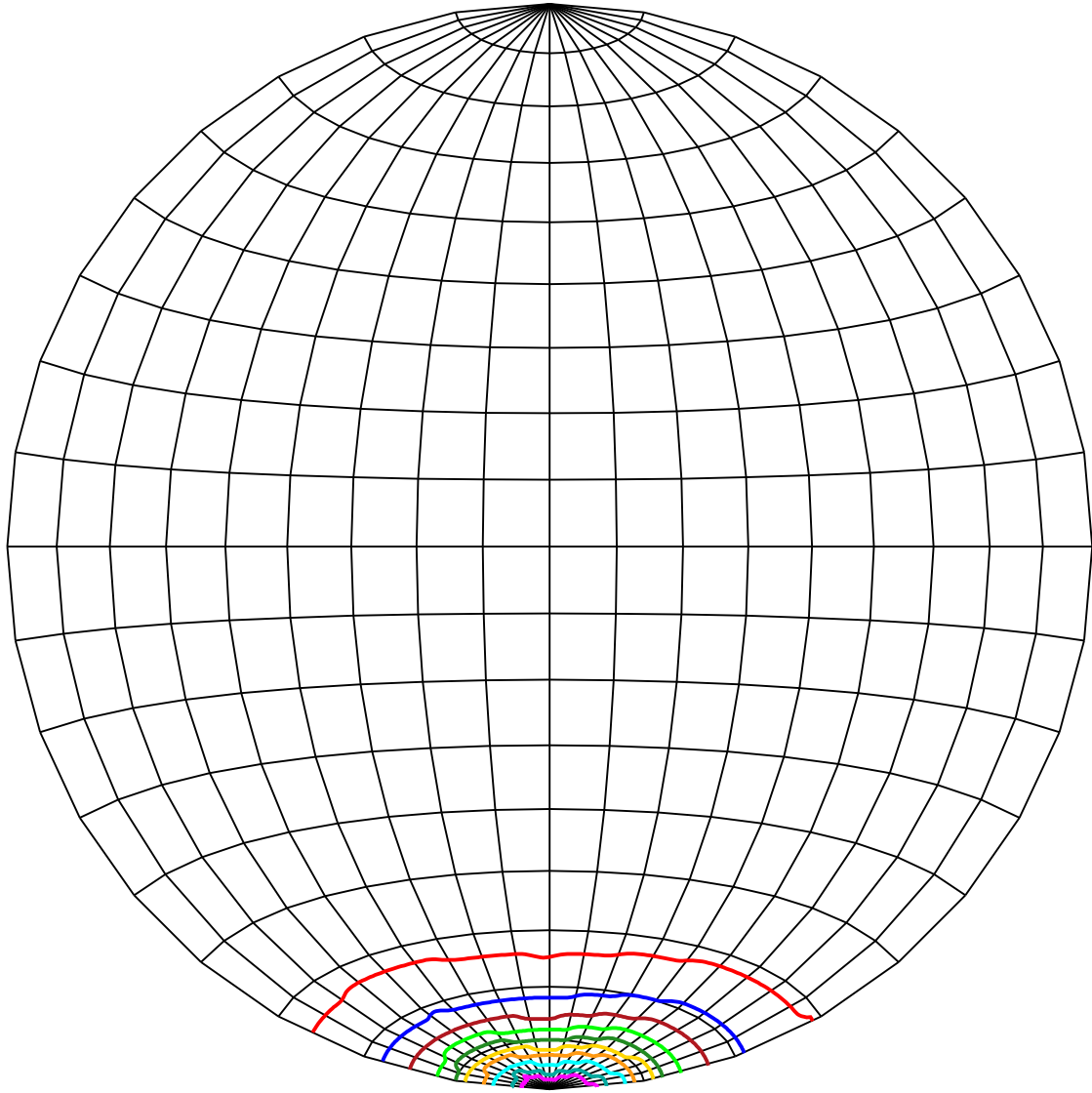
C Range: 0 - 360 Deg  
 C Interval: 45.0 Deg  
 Test Speed: High  
 Temperature: 25  
 Operators: QC01  
 Test Date: 2024/10/8 9:34:10

G Range: 0 - 90 Deg  
 G Interval: 1.0 Deg  
 Test System: Huipu CPM-1600B Goniophotometer  
 Humidity: 60  
 Test Distance: 6.81 m  
 Remarks:

Report No.:

Test Time: 2024/10/8 9:34:10

## ISOCANDELA DIAGRAM (SPHERE)



Unit of intensity:cd     $I_{max}(100\%)$ : 9000.534 cd

— 8550.508(95% $I_{max}$ )	— 4500.267(50% $I_{max}$ )
— 8100.48(90% $I_{max}$ )	— 3600.214(40% $I_{max}$ )
— 7200.427(80% $I_{max}$ )	— 2700.16(30% $I_{max}$ )
— 6300.374(70% $I_{max}$ )	— 1800.107(20% $I_{max}$ )
— 5400.321(60% $I_{max}$ )	— 900.053(10% $I_{max}$ )

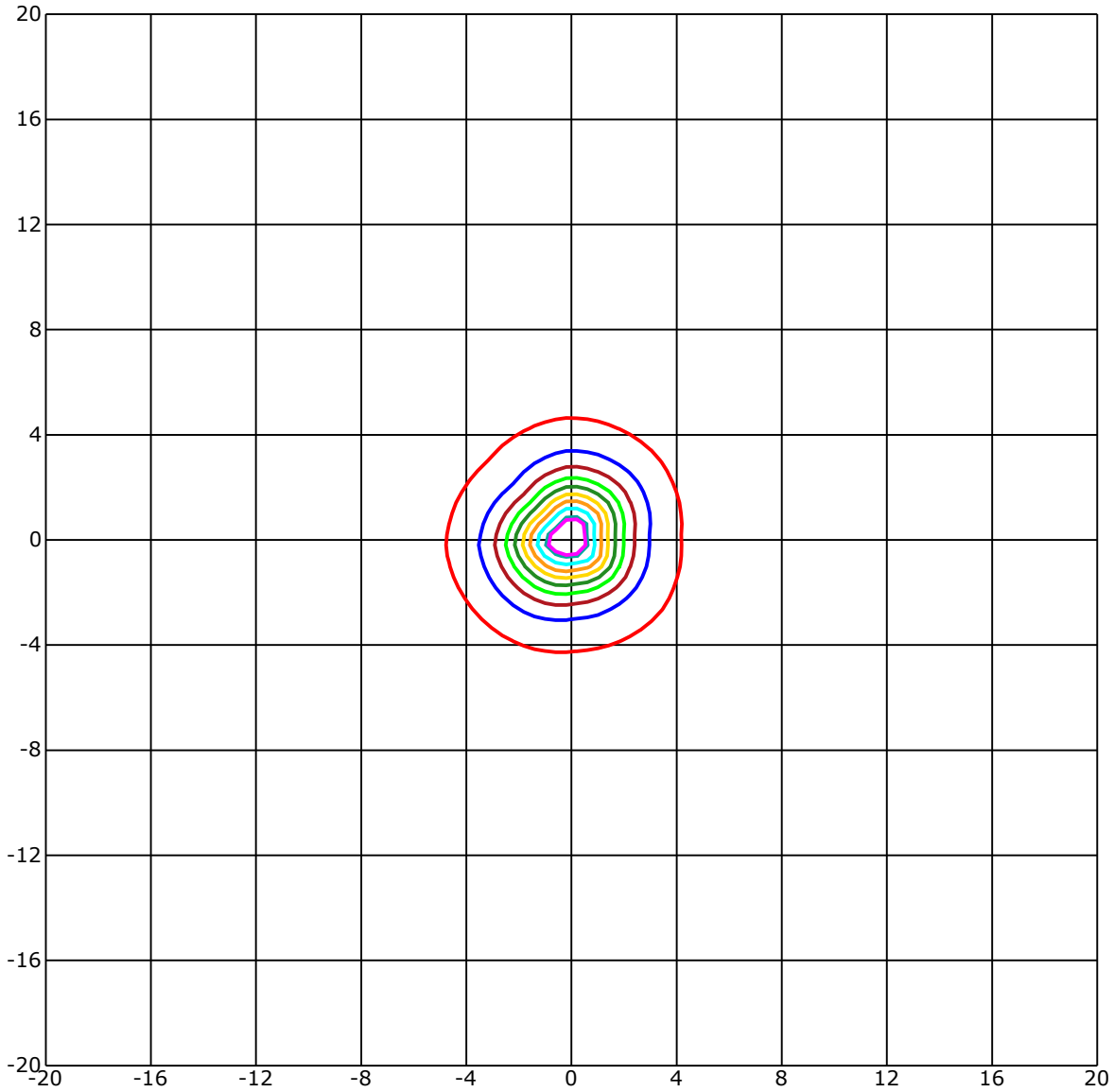
C Range: 0 - 360 Deg  
 C Interval: 45.0 Deg  
 Test Speed: High  
 Temperature: 25  
 Operators: QC01  
 Test Date: 2024/10/8 9:34:10

G Range: 0 - 90 Deg  
 G Interval: 1.0 Deg  
 Test System: Huipu CPM-1600B Goniophotometer  
 Humidity: 60  
 Test Distance: 6.81 m  
 Remarks:

Report No.:

Test Time: 2024/10/8 9:34:10

## ISOLX DIAGRAM



Unit of illumination:lx      Height of plane:10.0(m)/32.81(ft)

- |                   |                   |
|-------------------|-------------------|
| — 82.79(92%Emax)  | — 44.995(50%Emax) |
| — 80.991(90%Emax) | — 35.996(40%Emax) |
| — 71.992(80%Emax) | — 26.997(30%Emax) |
| — 62.993(70%Emax) | — 17.998(20%Emax) |
| — 53.994(60%Emax) | — 8.999(10%Emax)  |

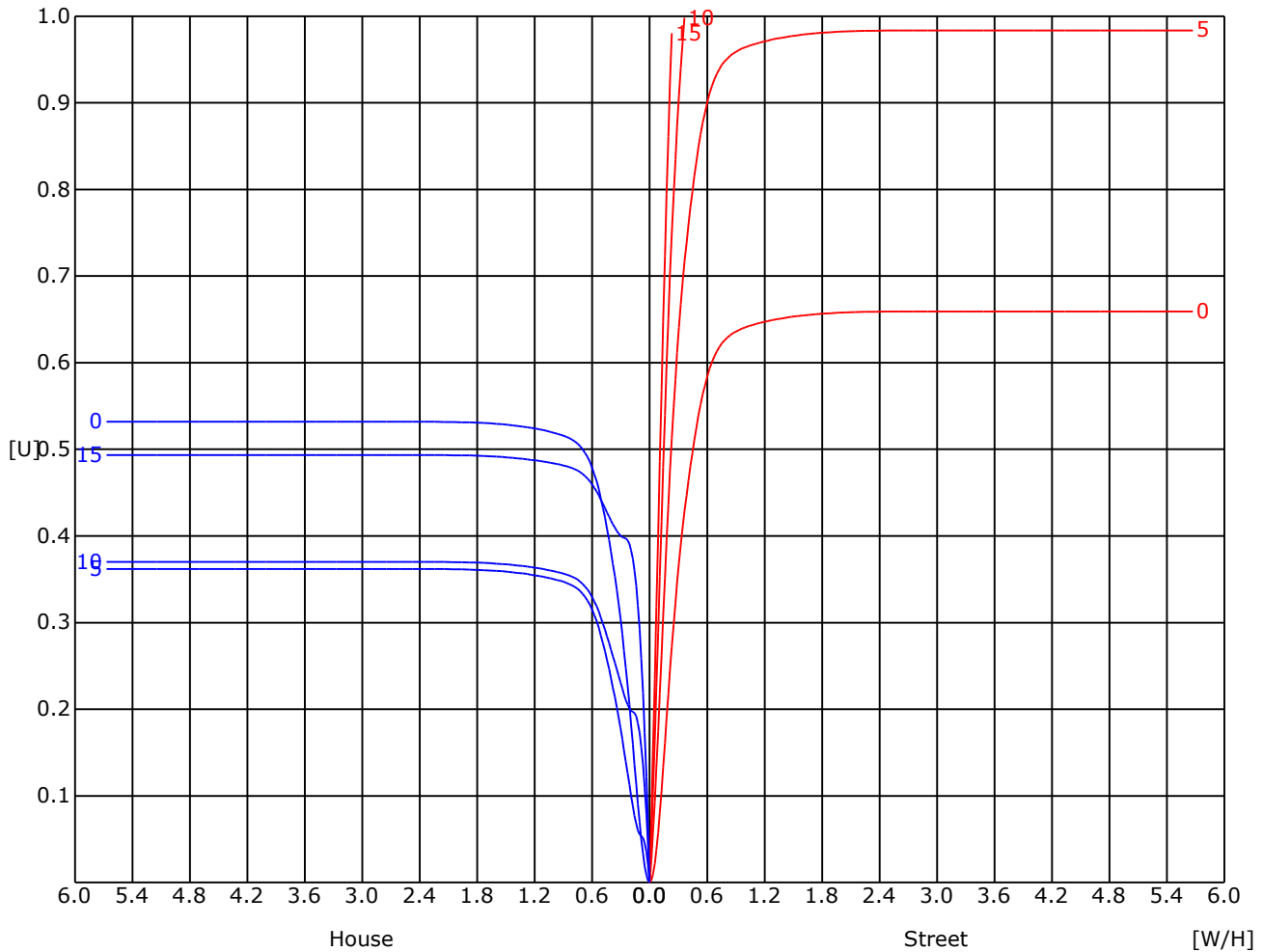
C Range: 0 - 360 Deg  
 C Interval: 45.0 Deg  
 Test Speed: High  
 Temperature: 25  
 Operators: QC01  
 Test Date: 2024/10/8 9:34:10

G Range: 0 - 90 Deg  
 G Interval: 1.0 Deg  
 Test System: Huipu CPM-1600B Goniophotometer  
 Humidity: 60  
 Test Distance: 6.81 m  
 Remarks:

Report No.:

Test Time: 2024/10/8 9:34:10

## UTILIZATION FACTOR DIAGRAM (ROAD)



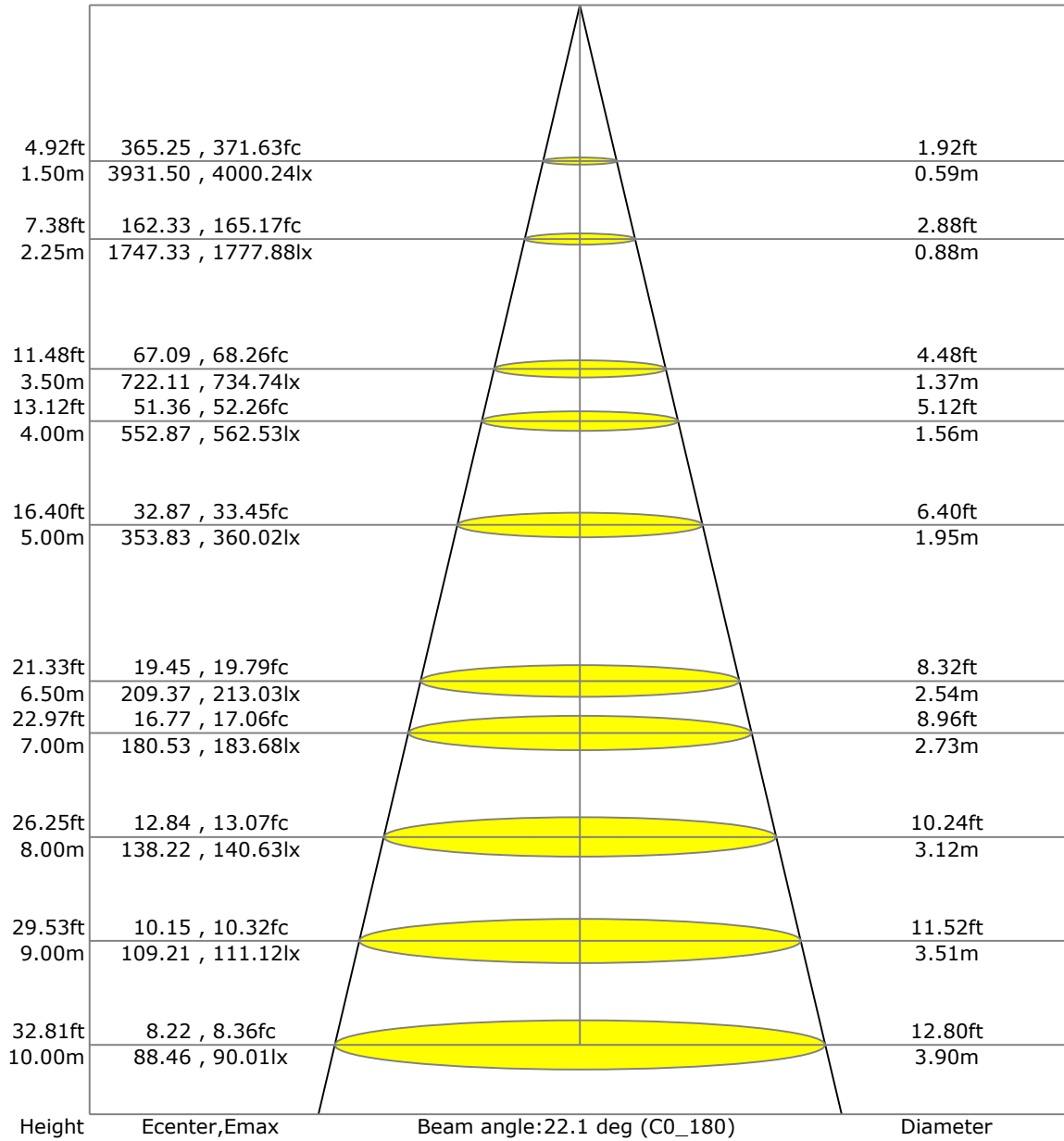
C Range: 0 - 360 Deg  
 C Interval: 45.0 Deg  
 Test Speed: High  
 Temperature: 25  
 Operators: QC01  
 Test Date: 2024/10/8 9:34:10

G Range: 0 - 90 Deg  
 G Interval: 1.0 Deg  
 Test System: Huipu CPM-1600B Goniophotometer  
 Humidity: 60  
 Test Distance: 6.81 m  
 Remarks:

Report No.:

Test Time: 2024/10/8 9:34:10

## LX-DISTANCE DIAGRAM



C Range: 0 - 360 Deg  
 C Interval: 45.0 Deg  
 Test Speed: High  
 Temperature: 25  
 Operators: QC01  
 Test Date: 2024/10/8 9:34:10

G Range: 0 - 90 Deg  
 G Interval: 1.0 Deg  
 Test System: Huipu CPM-1600B Goniophotometer  
 Humidity: 60  
 Test Distance: 6.81 m  
 Remarks:

Report No.:

Test Time: 2024/10/8 9:34:10

## UGR(Unified Glare Rating) TABLE

RHOCC	70	70	50	50	30	70	70	50	50	30
RHOW	50	30	50	30	30	50	30	50	30	30
RHOF	20	20	20	20	20	20	20	20	20	20
Room Size X	Viewed Endwise					Viewed Crosswise				
2H 2H	8.51	8.56	8.71	8.75	8.99	8.81	8.86	9.00	9.05	9.29
3H	8.49	8.55	8.70	8.74	8.99	8.78	8.84	8.99	9.03	9.28
4H	8.47	8.53	8.69	8.73	8.98	8.77	8.83	8.98	9.02	9.27
6H	8.46	8.52	8.67	8.72	8.97	8.75	8.81	8.97	9.01	9.26
8H	8.45	8.51	8.67	8.71	8.97	8.74	8.80	8.96	9.01	9.26
12H	8.44	8.50	8.66	8.71	8.96	8.73	8.79	8.95	9.00	9.26
4H 2H	8.48	8.54	8.69	8.74	8.99	8.93	8.99	9.14	9.18	9.43
3H	8.45	8.52	8.68	8.72	8.98	8.90	8.96	9.12	9.16	9.42
4H	8.43	8.50	8.66	8.71	8.97	8.88	8.94	9.11	9.15	9.41
6H	8.41	8.47	8.65	8.69	8.96	8.85	8.91	9.09	9.14	9.40
8H	8.40	8.46	8.64	8.69	8.95	8.84	8.90	9.08	9.13	9.39
12H	8.39	8.45	8.64	8.68	8.95	8.83	8.89	9.08	9.12	9.39
8H 4H	8.46	8.52	8.68	8.72	8.97	8.90	8.96	9.12	9.17	9.42
6H	8.37	8.43	8.63	8.67	8.94	8.81	8.87	9.07	9.11	9.38
8H	8.36	8.41	8.62	8.66	8.94	8.80	8.85	9.06	9.10	9.38
12H	8.34	8.39	8.61	8.65	8.93	8.78	8.83	9.05	9.09	9.37
12H 4H	8.39	8.45	8.64	8.68	8.95	8.83	8.89	9.08	9.12	9.39
6H	8.36	8.41	8.62	8.66	8.94	8.80	8.85	9.06	9.10	9.38

C Range: 0 - 360 Deg  
 C Interval: 45.0 Deg  
 Test Speed: High  
 Temperature: 25  
 Operators: QC01  
 Test Date: 2024/10/8 9:34:10

G Range: 0 - 90 Deg  
 G Interval: 1.0 Deg  
 Test System: Huipu CPM-1600B Goniophotometer  
 Humidity: 60  
 Test Distance: 6.81 m  
 Remarks:



Report No.:

Test Time: 2024/10/8 9:34:10

**ZONAL LUMINOUS FLUX TABLE**

Gamma [deg]	Imean [cd]	Zonal Flux [lm]	Sum Flux [lm]	Zonal Flux [%]	Sum Flux [%]
0	8942.17	0.00	0.00	0.00	0.00
5	8182.59	199.62	199.62	9.06	9.06
10	5549.48	447.48	647.09	20.31	29.37
15	3178.90	446.16	1093.25	20.25	49.61
20	1818.08	353.08	1446.33	16.02	65.64
25	1162.82	277.42	1723.76	12.59	78.23
30	704.33	211.08	1934.84	9.58	87.81
35	322.17	125.01	2059.85	5.67	93.48
40	125.31	57.67	2117.52	2.62	96.10
45	63.51	28.51	2146.03	1.29	97.39
50	45.18	19.91	2165.94	0.90	98.30
55	34.57	16.38	2182.32	0.74	99.04
60	22.92	12.32	2194.64	0.56	99.60
65	10.29	6.81	2201.45	0.31	99.91
70	1.73	1.89	2203.34	0.09	99.99
75	0.00	0.16	2203.50	0.01	100.00
80	0.00	0.00	2203.50	0.00	100.00
85	0.00	0.00	2203.50	0.00	100.00
90	0.00	0.00	2203.50	0.00	100.00

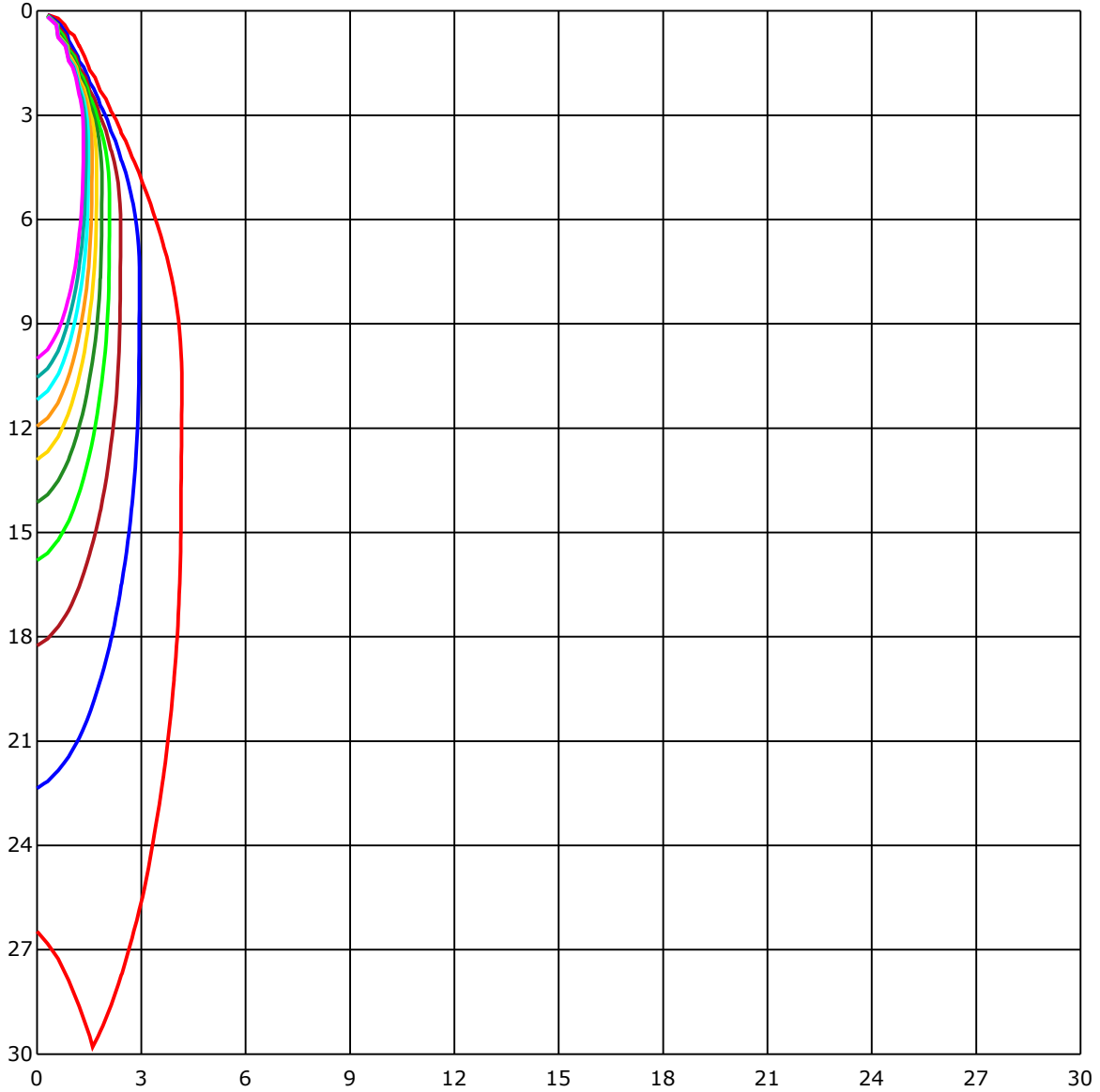
C Range: 0 - 360 Deg  
C Interval: 45.0 Deg  
Test Speed: High  
Temperature: 25  
Operators: QC01  
Test Date: 2024/10/8 9:34:10

G Range: 0 - 90 Deg  
G Interval: 1.0 Deg  
Test System: Huipu CPM-1600B Goniophotometer  
Humidity: 60  
Test Distance: 6.81 m  
Remarks:

Report No.:

Test Time: 2024/10/8 9:34:10

## SPACE ISOLX DIAGRAM



Unit of illumination:lx

- |          |          |
|----------|----------|
| — 88.519 | — 44.259 |
| — 79.667 | — 35.408 |
| — 70.815 | — 26.556 |
| — 61.963 | — 17.704 |
| — 53.111 | — 8.852  |

C Range: 0 - 360 Deg  
 C Interval: 45.0 Deg  
 Test Speed: High  
 Temperature: 25  
 Operators: QC01  
 Test Date: 2024/10/8 9:34:10

G Range: 0 - 90 Deg  
 G Interval: 1.0 Deg  
 Test System: Huipu CPM-1600B Goniophotometer  
 Humidity: 60  
 Test Distance: 6.81 m  
 Remarks:

Report No.:

Test Time: 2024/10/8 9:34:10

## LUMINOUS DISTRIBUTION INTENSITY DATA

Gamma\C	C0	C45	C90	C135	C180	C225	C270	C315	C360	
G0	8845.87	8963.39	8960.47	8998.96	8845.87	8963.39	8960.47	8998.96	8845.87	
G1	8650.53	8943.17	9000.53	8935.75	8960.14	8903.79	8805.8	8969.37	8650.53	
G2	8332.67	8816.84	8959.91	8767.31	8975.44	8766.01	8553.7	8841.14	8332.67	
G3	7940.15	8643.72	8822.31	8498.84	8903.15	8547.25	8212.28	8585.01	7940.15	
G4	7446.98	8326.64	8608.38	8118.14	8740.13	8228.33	7762.85	8229.3	7446.98	
G5	6884.63	7967.0	8257.17	7650.06	8459.05	7830.14	7207.45	7758.68	6884.63	
G6	6305.8	7509.96	7840.58	7109.18	8099.03	7324.04	6623.53	7207.13	6305.8	
G7	5753.56	6999.17	7336.0	6505.96	7657.62	6786.03	6031.4	6602.52	5753.56	
G8	5170.01	6440.16	6752.82	5900.39	7121.98	6241.3	5437.32	5973.61	5170.01	
G9	4652.27	5877.71	6133.7	5283.21	6554.75	5664.61	4876.17	5353.43	4652.27	
G10	4156.18	5326.48	5542.45	4717.42	5978.81	5116.63	4359.35	4766.77	4156.18	
G11	3715.84	4801.74	4973.79	4185.63	5411.26	4619.06	3882.05	4226.49	3715.84	
G12	3312.23	4327.22	4454.47	3715.1	4859.75	4155.25	3459.33	3748.72	3312.23	
G13	2942.94	3887.66	3974.06	3285.33	4358.47	3734.81	3077.47	3308.75	2942.94	
G14	2612.55	3472.23	3545.13	2912.98	3889.75	3348.49	2731.74	2918.31	2612.55	
G15	2327.9	3120.97	3157.93	2572.99	3468.19	3001.65	2426.44	2569.61	2327.9	
G16	2067.12	2778.67	2820.04	2282.82	3087.67	2687.68	2158.67	2270.62	2067.12	
G17	1851.43	2492.21	2514.88	2031.13	2752.98	2403.21	1925.54	2015.97	1851.43	
G18	1670.14	2233.33	2250.4	1824.39	2454.83	2150.04	1735.35	1807.42	1670.14	
G19	1521.6	2000.02	2021.21	1648.67	2203.84	1938.43	1575.3	1635.59	1521.6	
G20	1389.15	1803.61	1822.26	1509.64	1973.16	1744.44	1438.87	1501.29	1389.15	
G21	1278.4	1627.89	1649.97	1390.03	1776.3	1579.8	1321.49	1381.82	1278.4	
G22	1173.64	1476.11	1510.24	1289.91	1614.86	1437.1	1215.98	1281.51	1173.64	
G23	1078.24	1344.49	1385.35	1199.66	1479.12	1312.31	1122.86	1194.65	1078.24	
G24	983.13	1225.91	1276.64	1120.35	1359.79	1195.72	1028.9	1112.1	983.13	
G25	889.96	1120.73	1177.4	1039.85	1258.0	1093.73	936.47	1027.93	889.96	
G26	799.71	1017.77	1087.61	959.75	1160.52	987.16	848.45	946.49	799.71	
G27	709.0	920.47	992.96	875.07	1069.29	891.63	757.32	859.95	709.0	
G28	617.5	827.54	904.84	786.17	978.03	795.77	663.46	768.68	617.5	
G29	532.54	739.19	813.85	700.97	890.61	704.73	573.77	678.95	532.54	
G30	449.62	649.54	730.19	613.97	801.38	613.93	490.33	591.53	449.62	
G31	380.28	566.39	645.09	528.55	712.2	532.49	411.87	505.45	380.28	
G32	316.01	487.37	559.99	442.98	624.08	451.33	341.33	423.74	316.01	
G33	262.35	413.3	479.53	370.31	540.33	382.28	281.69	350.97	262.35	
G34	217.46	349.07	403.84	307.33	456.53	321.48	231.74	289.94	217.46	
G35	182.03	293.28	337.62	252.38	386.78	271.07	189.54	237.49	182.03	
G36	151.42	245.89	283.03	208.04	323.2	229.75	149.38	196.36	151.42	

C Range: 0 - 360 Deg  
 C Interval: 45.0 Deg  
 Test Speed: High  
 Temperature: 25  
 Operators: QC01  
 Test Date: 2024/10/8 9:34:10

G Range: 0 - 90 Deg  
 G Interval: 1.0 Deg  
 Test System: Huipu CPM-1600B Goniophotometer  
 Humidity: 60  
 Test Distance: 6.81 m  
 Remarks:

Report No.:

Test Time: 2024/10/8 9:34:10

### LUMINOUS DISTRIBUTION INTENSITY DATA(Continue 1)

Gamma\C	C0	C45	C90	C135	C180	C225	C270	C315	C360	
G37	127.35	206.84	236.05	170.29	270.23	194.22	114.78	155.22	127.35	
G38	103.47	174.7	197.7	139.92	225.85	157.82	90.25	121.32	103.47	
G39	83.25	148.31	166.72	116.87	190.28	126.84	73.46	96.74	83.25	
G40	68.27	125.77	144.18	99.34	161.48	103.28	61.4	80.97	68.27	
G41	59.59	109.08	123.17	85.01	138.15	86.07	54.26	70.82	59.59	
G42	53.66	95.21	108.15	74.53	118.4	73.78	50.55	65.44	53.66	
G43	49.25	80.37	95.4	65.81	101.38	65.85	46.7	60.61	49.25	
G44	46.79	67.99	86.49	59.69	84.4	60.8	44.15	57.78	46.79	
G45	44.47	58.94	77.45	54.72	74.76	57.6	42.25	54.31	44.47	
G46	42.48	53.1	70.58	51.34	65.9	53.15	40.07	51.94	42.48	
G47	40.95	48.74	63.03	48.42	60.98	50.64	38.91	49.07	40.95	
G48	38.4	45.59	59.45	46.05	57.69	47.67	37.15	47.67	38.4	
G49	37.43	43.73	55.28	43.87	55.09	46.47	33.95	45.59	37.43	
G50	35.01	41.69	54.07	41.88	52.22	43.5	32.37	42.71	35.01	
G51	33.44	39.7	50.87	40.12	49.25	41.41	30.19	40.25	33.44	
G52	31.35	37.61	48.74	38.31	47.67	38.77	28.66	38.26	31.35	
G53	29.54	37.8	46.61	36.08	45.49	37.1	26.39	36.27	29.54	
G54	26.76	34.27	44.29	34.87	43.32	34.69	24.49	33.9	26.76	
G55	25.46	32.09	41.83	33.02	41.69	32.79	21.33	32.56	25.46	
G56	22.91	30.14	40.86	31.26	39.61	29.63	19.62	29.26	22.91	
G57	20.64	27.96	38.68	28.75	37.89	26.94	16.46	26.85	20.64	
G58	18.46	25.88	36.13	27.18	35.11	23.79	14.01	24.12	18.46	
G59	15.91	23.93	33.11	24.53	31.63	21.8	11.22	21.24	15.91	
G60	12.75	21.19	31.54	22.63	29.22	18.55	9.23	19.01	12.75	
G61	10.85	19.2	29.03	20.36	26.99	16.46	5.19	15.49	10.85	
G62	7.05	16.79	26.43	18.04	23.84	12.75	2.78	13.17	7.05	
G63	4.59	14.75	24.67	16.46	21.47	9.32	0.46	8.35	4.59	
G64	2.18	11.78	21.56	12.89	19.39	6.86	0.0	7.65	2.18	
G65	1.39	9.46	19.29	10.11	16.09	5.52	0.0	4.22	1.39	
G66	0.0	5.33	15.68	6.91	12.38	2.92	0.0	3.15	0.0	
G67	0.0	3.39	12.15	3.71	9.65	1.53	0.0	1.25	0.0	
G68	0.0	1.21	9.6	2.69	7.1	0.0	0.0	0.0	0.0	
G69	0.0	0.0	7.74	0.93	5.19	0.0	0.0	0.0	0.0	
G70	0.0	0.0	5.05	0.19	3.85	0.0	0.0	0.0	0.0	
G71	0.0	0.0	3.29	0.0	1.62	0.0	0.0	0.0	0.0	
G72	0.0	0.0	2.41	0.0	0.6	0.0	0.0	0.0	0.0	
G73	0.0	0.0	0.09	0.0	0.0	0.0	0.0	0.0	0.0	

C Range: 0 - 360 Deg  
 C Interval: 45.0 Deg  
 Test Speed: High  
 Temperature: 25  
 Operators: QC01  
 Test Date: 2024/10/8 9:34:10

G Range: 0 - 90 Deg  
 G Interval: 1.0 Deg  
 Test System: Huipu CPM-1600B Goniophotometer  
 Humidity: 60  
 Test Distance: 6.81 m  
 Remarks:

Report No.:

Test Time: 2024/10/8 9:34:10

### LUMINOUS DISTRIBUTION INTENSITY DATA(Continue 2)

Gamma\C	C0	C45	C90	C135	C180	C225	C270	C315	C360	
G74	0.0	0.0	0.0	0.0	0.0	0.0	0.0	0.0	0.0	
G75	0.0	0.0	0.0	0.0	0.0	0.0	0.0	0.0	0.0	
G76	0.0	0.0	0.0	0.0	0.0	0.0	0.0	0.0	0.0	
G77	0.0	0.0	0.0	0.0	0.0	0.0	0.0	0.0	0.0	
G78	0.0	0.0	0.0	0.0	0.0	0.0	0.0	0.0	0.0	
G79	0.0	0.0	0.0	0.0	0.0	0.0	0.0	0.0	0.0	
G80	0.0	0.0	0.0	0.0	0.0	0.0	0.0	0.0	0.0	
G81	0.0	0.0	0.0	0.0	0.0	0.0	0.0	0.0	0.0	
G82	0.0	0.0	0.0	0.0	0.0	0.0	0.0	0.0	0.0	
G83	0.0	0.0	0.0	0.0	0.0	0.0	0.0	0.0	0.0	
G84	0.0	0.0	0.0	0.0	0.0	0.0	0.0	0.0	0.0	
G85	0.0	0.0	0.0	0.0	0.0	0.0	0.0	0.0	0.0	
G86	0.0	0.0	0.0	0.0	0.0	0.0	0.0	0.0	0.0	
G87	0.0	0.0	0.0	0.0	0.0	0.0	0.0	0.0	0.0	
G88	0.0	0.0	0.0	0.0	0.0	0.0	0.0	0.0	0.0	
G89	0.0	0.0	0.0	0.0	0.0	0.0	0.0	0.0	0.0	
G90	0.0	0.0	0.0	0.0	0.0	0.0	0.0	0.0	0.0	

C Range: 0 - 360 Deg  
C Interval: 45.0 Deg  
Test Speed: High  
Temperature: 25  
Operators: QC01  
Test Date: 2024/10/8 9:34:10

G Range: 0 - 90 Deg  
G Interval: 1.0 Deg  
Test System: Huipu CPM-1600B Goniophotometer  
Humidity: 60  
Test Distance: 6.81 m  
Remarks: