

Report No.:

Test Time: 2024/10/15 15:40:32

## LUMINAIRE PHOTOMETRIC TEST REPORT

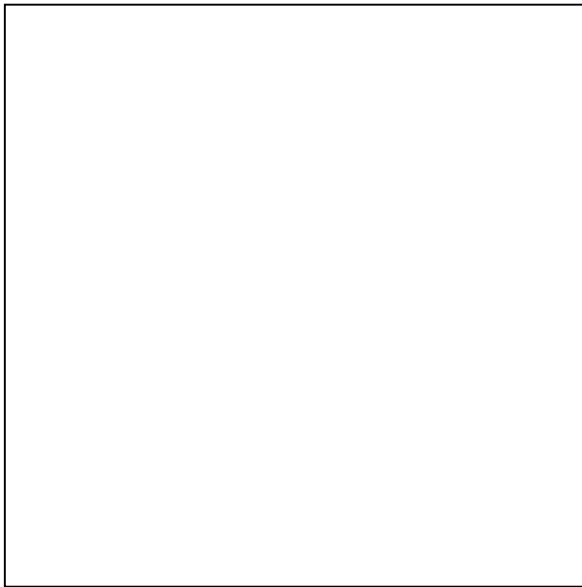
### Luminaire Property

Manufacturer: InBright	Voltage(V): 219.90 V
Luminaire Type: IBSP155CT085H95-38°-8W	Current(A): 0.0390 A
Lamp Type:	Power(W): 8.05 W
Luminous Width: 65 mm	Power Factor: 0.9330
Luminous Length: 65 mm	Lamp Luminous Flux: 719.71
Luminous Height: 70 mm	

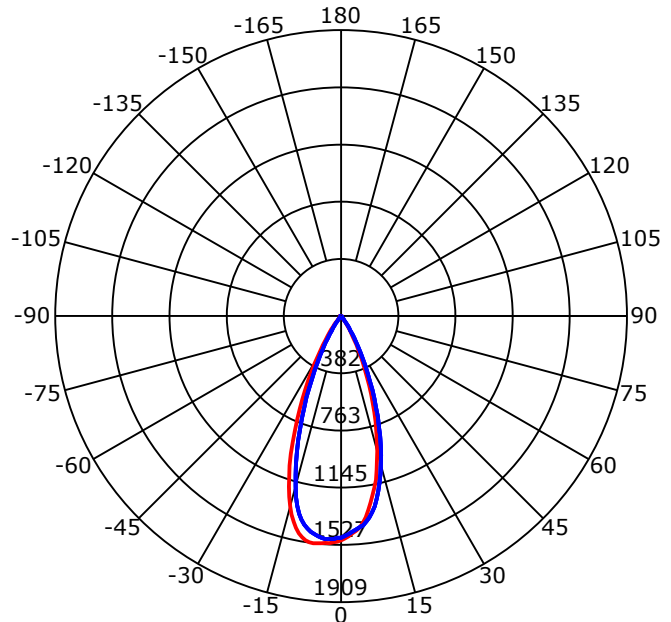
### Photometric Results

CIE Class: Direct	Max. Intensity: 1526.98 cd
Luminaire Luminous Flux: 719.7104 lm	Max.Intensity Angle: C=180 Gamma=7
Downward Ratio: 100.00%	Upward Ratio: 0.00%
Luminaire Efficacy Rating(LER): 89.41 lm/W	Efficacy: 100.00%
Beam Angle(50%) C0-180,C90-270: 40.5,40.3	Center Intensity: 1496.00 cd
Field Angle(10%) C0-180,C90-270: 64.2,63.4	Effective Luminous Flux: 673.02 lm
S/MH C0-180,C90-270: 0.689,0.689	ERP(φuse)(120deg): 717.50 lm

Picture of Luminaire



Luminous Intensity Distribution Curve



Beam Angle(50%) C0-180,C90-270: 40.5 deg,40.3 deg

C0-180 — C90-270 —

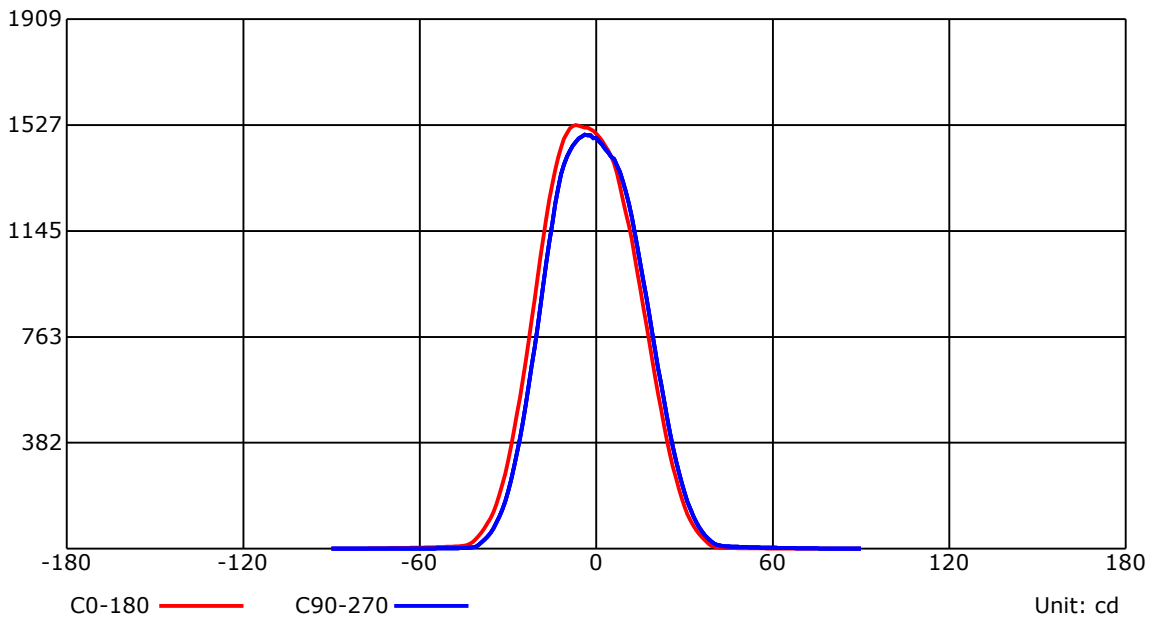
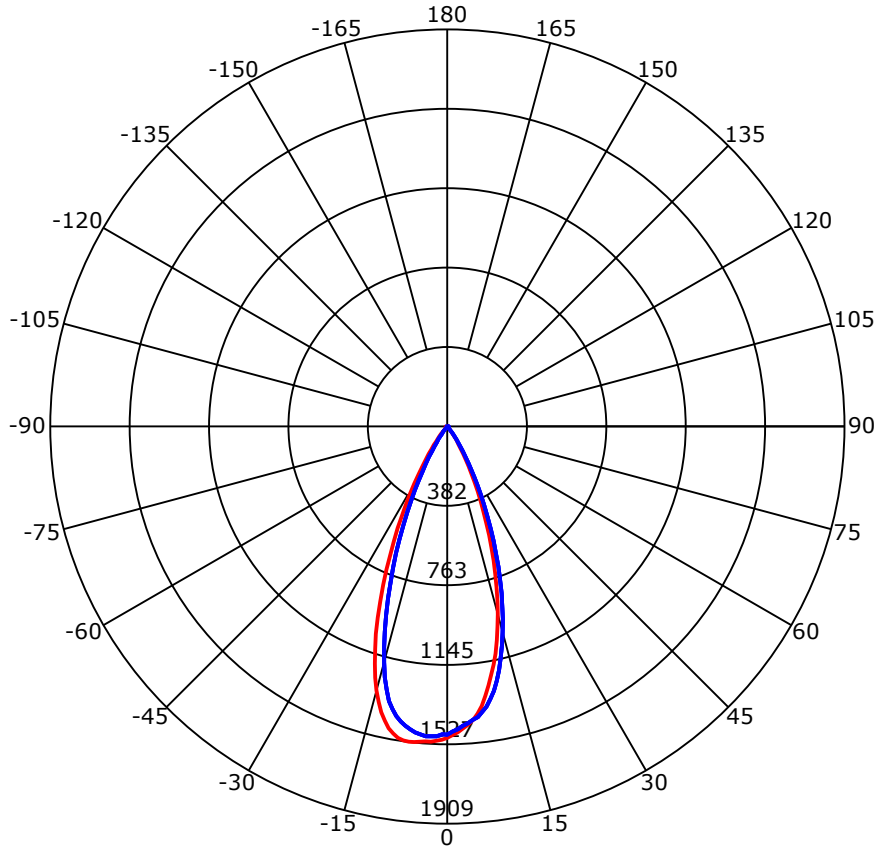
C Range: 0 - 360 Deg  
 C Interval: 45.0 Deg  
 Test Speed: High  
 Temperature: 25  
 Operators: QC01  
 Test Date: 2024/10/15 15:40:32

G Range: 0 - 90 Deg  
 G Interval: 1.0 Deg  
 Test System: Huipu CPM-1600B Goniophotometer  
 Humidity: 60  
 Test Distance: 6.81 m  
 Remarks:

Report No.:

Test Time: 2024/10/15 15:40:32

## Luminous Intensity Distribution Curve



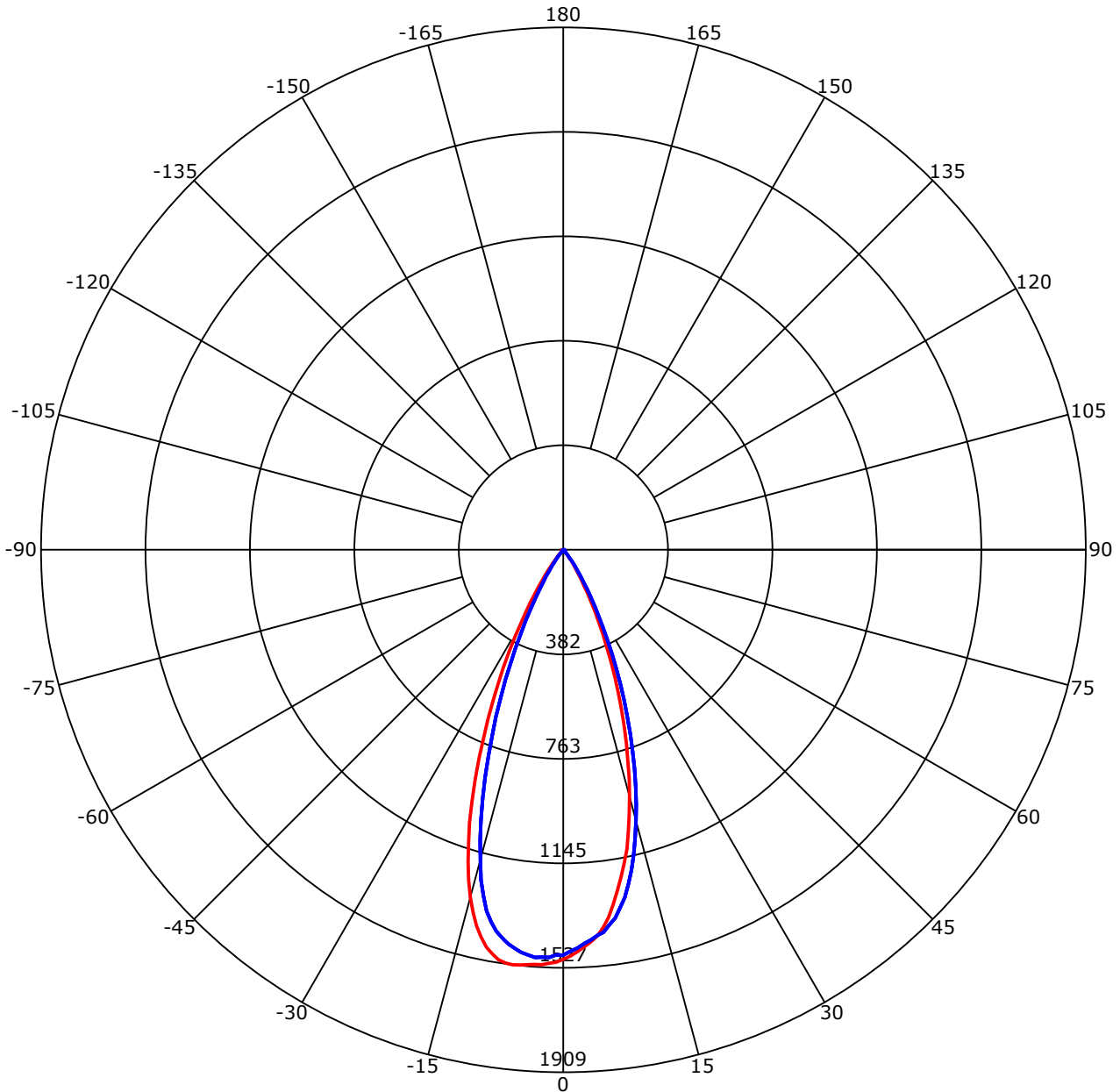
C Range: 0 - 360 Deg  
 C Interval: 45.0 Deg  
 Test Speed: High  
 Temperature: 25  
 Operators: QC01  
 Test Date: 2024/10/15 15:40:32

G Range: 0 - 90 Deg  
 G Interval: 1.0 Deg  
 Test System: Huipu CPM-1600B Goniophotometer  
 Humidity: 60  
 Test Distance: 6.81 m  
 Remarks:

Report No.:

Test Time: 2024/10/15 15:40:32

## Luminous Intensity Distribution Curve



C0-180 —    C90-270 —  
 Unit: cd/klm

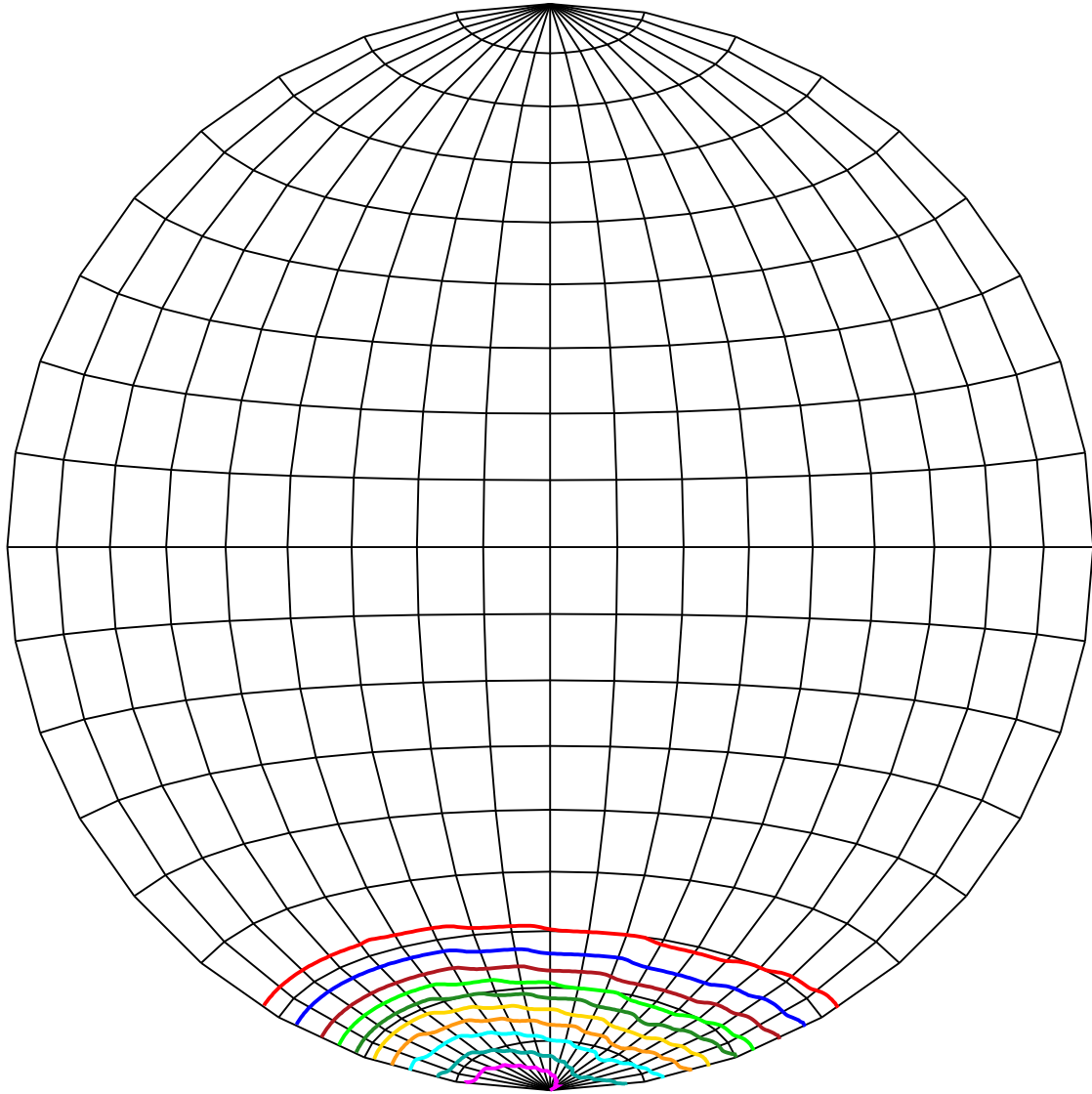
C Range: 0 - 360 Deg  
 C Interval: 45.0 Deg  
 Test Speed: High  
 Temperature: 25  
 Operators: QC01  
 Test Date: 2024/10/15 15:40:32

G Range: 0 - 90 Deg  
 G Interval: 1.0 Deg  
 Test System: Huipu CPM-1600B Goniophotometer  
 Humidity: 60  
 Test Distance: 6.81 m  
 Remarks:

Report No.:

Test Time: 2024/10/15 15:40:32

## ISOCANDELA DIAGRAM (SPHERE)



Unit of intensity:cd    I<sub>max</sub>(100%): 1526.979 cd

— 1450.63(95%I <sub>max</sub> )	— 763.49(50%I <sub>max</sub> )
— 1374.281(90%I <sub>max</sub> )	— 610.792(40%I <sub>max</sub> )
— 1221.583(80%I <sub>max</sub> )	— 458.094(30%I <sub>max</sub> )
— 1068.885(70%I <sub>max</sub> )	— 305.396(20%I <sub>max</sub> )
— 916.188(60%I <sub>max</sub> )	— 152.698(10%I <sub>max</sub> )

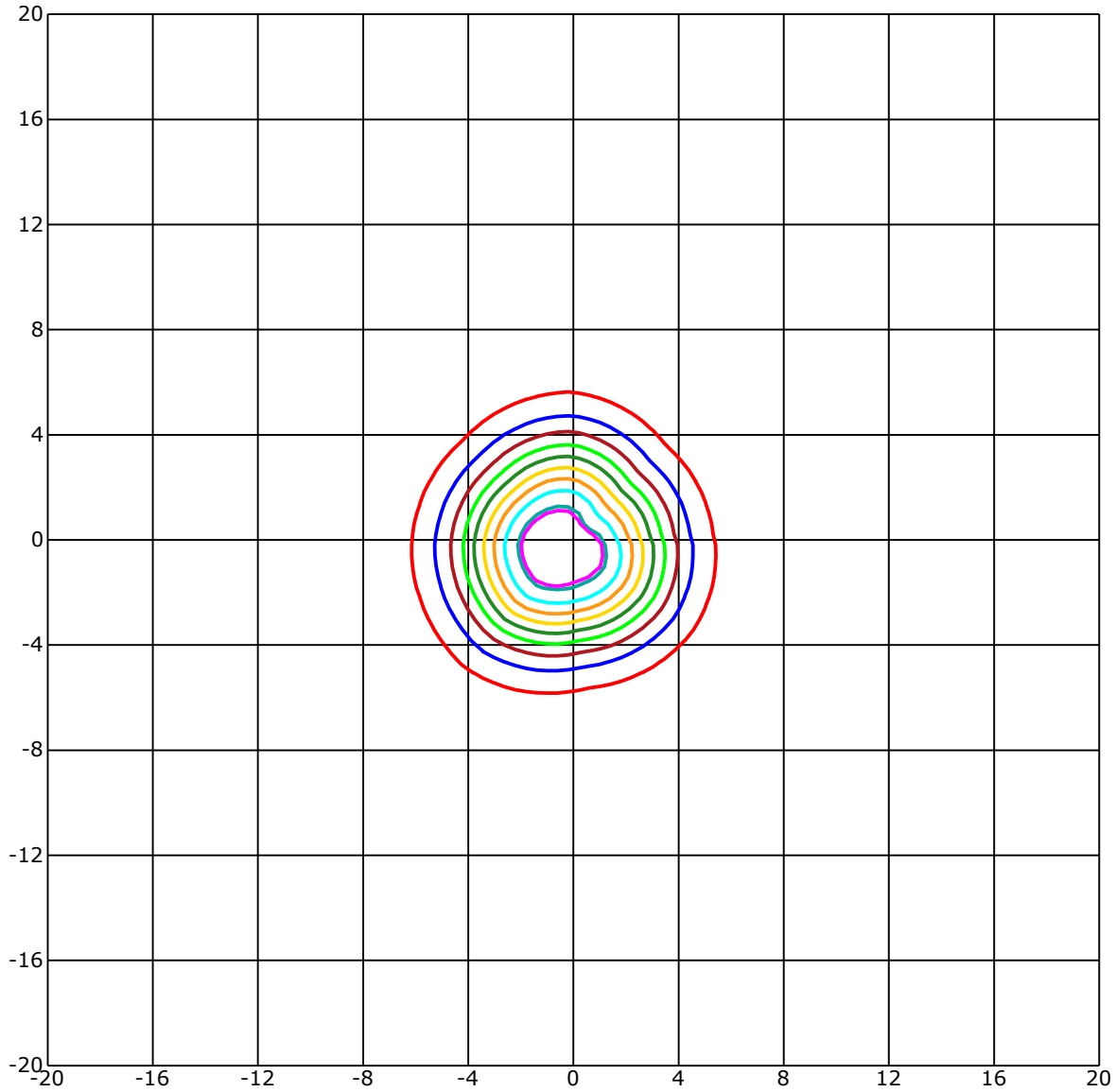
C Range: 0 - 360 Deg  
 C Interval: 45.0 Deg  
 Test Speed: High  
 Temperature: 25  
 Operators: QC01  
 Test Date: 2024/10/15 15:40:32

G Range: 0 - 90 Deg  
 G Interval: 1.0 Deg  
 Test System: Huipu CPM-1600B Goniophotometer  
 Humidity: 60  
 Test Distance: 6.81 m  
 Remarks:

Report No.:

Test Time: 2024/10/15 15:40:32

## ISOLX DIAGRAM



Unit of illumination:lx    Height of plane:10.0(m)/32.81(ft)

— 13.906(92%Emax)	— 7.558(50%Emax)
— 13.604(90%Emax)	— 6.046(40%Emax)
— 12.093(80%Emax)	— 4.535(30%Emax)
— 10.581(70%Emax)	— 3.023(20%Emax)
— 9.069(60%Emax)	— 1.512(10%Emax)

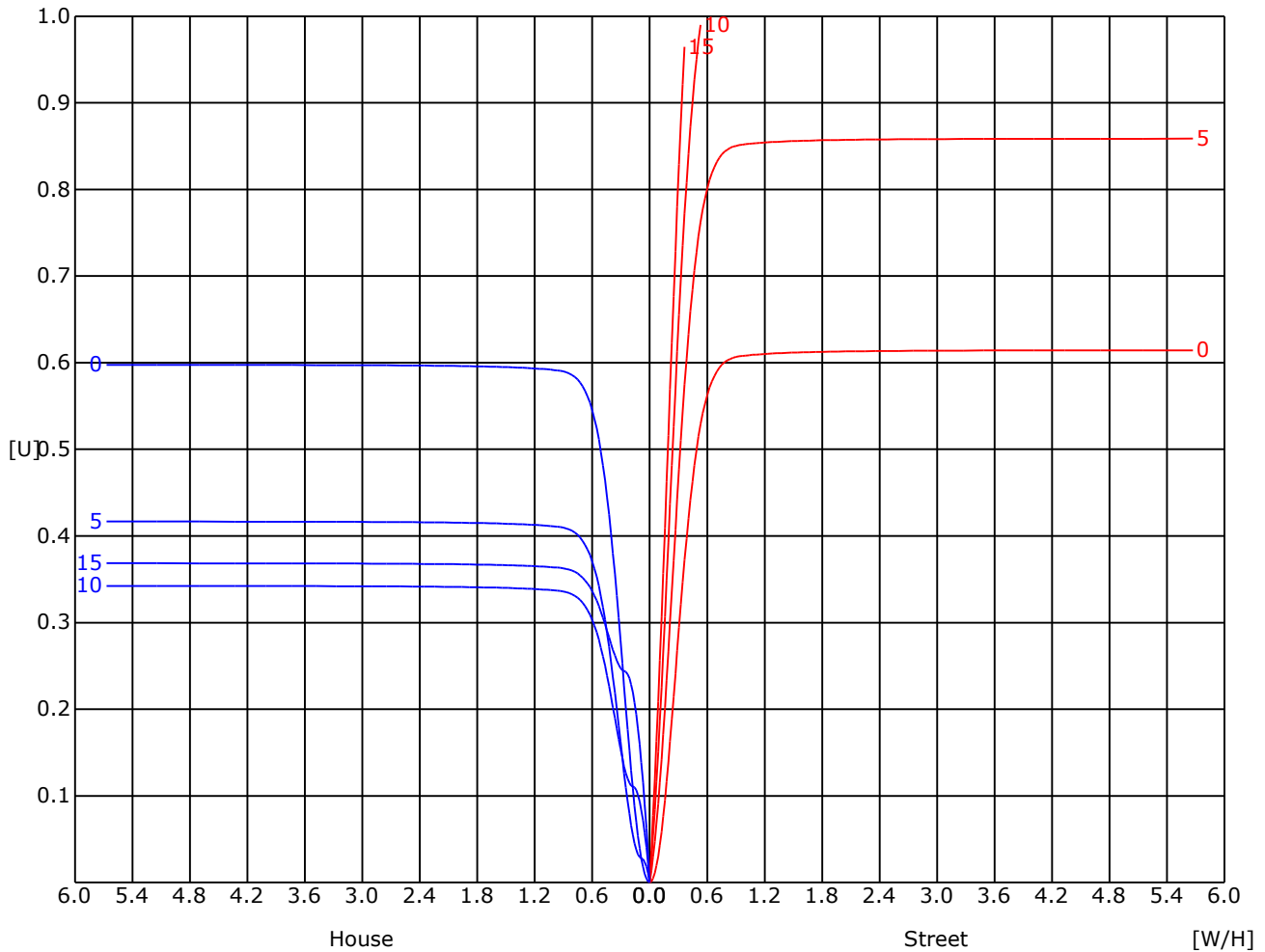
C Range: 0 - 360 Deg  
 C Interval: 45.0 Deg  
 Test Speed: High  
 Temperature: 25  
 Operators: QC01  
 Test Date: 2024/10/15 15:40:32

G Range: 0 - 90 Deg  
 G Interval: 1.0 Deg  
 Test System: Huipu CPM-1600B Goniophotometer  
 Humidity: 60  
 Test Distance: 6.81 m  
 Remarks:

Report No.:

Test Time: 2024/10/15 15:40:32

## UTILIZATION FACTOR DIAGRAM (ROAD)



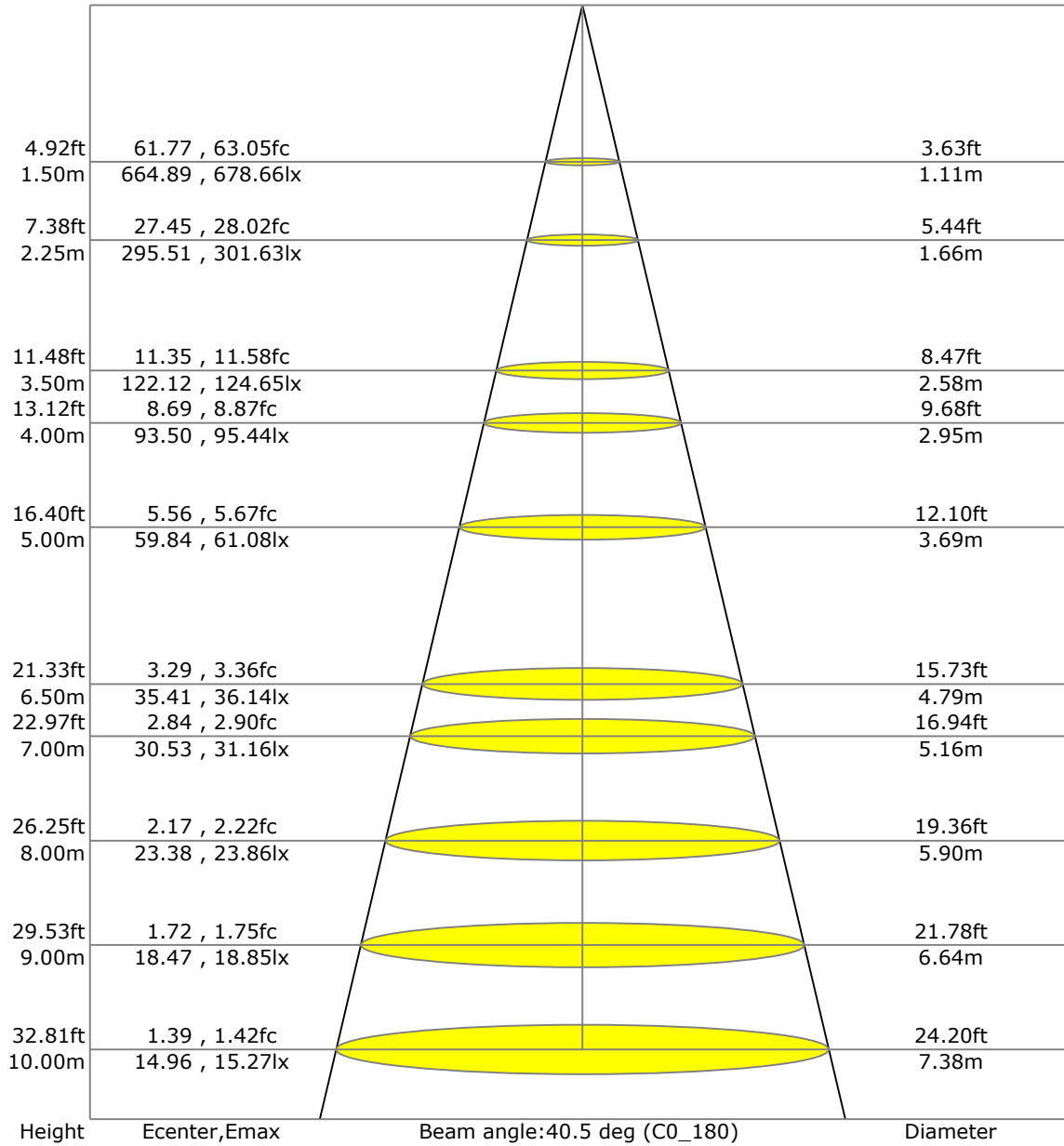
C Range: 0 - 360 Deg  
 C Interval: 45.0 Deg  
 Test Speed: High  
 Temperature: 25  
 Operators: QC01  
 Test Date: 2024/10/15 15:40:32

G Range: 0 - 90 Deg  
 G Interval: 1.0 Deg  
 Test System: Huipu CPM-1600B Goniophotometer  
 Humidity: 60  
 Test Distance: 6.81 m  
 Remarks:

Report No.:

Test Time: 2024/10/15 15:40:32

## LX-DISTANCE DIAGRAM



C Range: 0 - 360 Deg  
 C Interval: 45.0 Deg  
 Test Speed: High  
 Temperature: 25  
 Operators: QC01  
 Test Date: 2024/10/15 15:40:32

G Range: 0 - 90 Deg  
 G Interval: 1.0 Deg  
 Test System: Huipu CPM-1600B Goniophotometer  
 Humidity: 60  
 Test Distance: 6.81 m  
 Remarks:

Report No.:

Test Time: 2024/10/15 15:40:32

## UGR(Unified Glare Rating) TABLE

RHOCC	70	70	50	50	30	70	70	50	50	30
RHOW	50	30	50	30	30	50	30	50	30	30
RHOF	20	20	20	20	20	20	20	20	20	20
Room Size X	Viewed Endwise					Viewed Crosswise				
2H 2H	2.23	2.28	2.43	2.46	2.71	2.54	2.59	2.74	2.78	3.02
3H	2.22	2.27	2.42	2.46	2.70	2.52	2.57	2.72	2.76	3.01
4H	2.20	2.25	2.41	2.45	2.70	2.50	2.56	2.71	2.75	3.00
6H	2.19	2.24	2.41	2.44	2.69	2.49	2.54	2.71	2.74	2.99
8H	2.18	2.23	2.40	2.44	2.69	2.48	2.53	2.70	2.74	2.99
12H	2.17	2.23	2.40	2.43	2.69	2.47	2.53	2.70	2.73	2.99
4H 2H	2.19	2.25	2.40	2.44	2.69	2.82	2.87	3.03	3.07	3.32
3H	2.17	2.23	2.40	2.43	2.69	2.80	2.85	3.02	3.05	3.31
4H	2.16	2.21	2.39	2.42	2.68	2.78	2.83	3.01	3.04	3.30
6H	2.14	2.19	2.38	2.41	2.67	2.76	2.81	2.99	3.03	3.29
8H	2.13	2.18	2.37	2.40	2.67	2.75	2.80	2.99	3.02	3.29
12H	2.11	2.16	2.36	2.40	2.66	2.73	2.78	2.98	3.01	3.28
8H 4H	2.17	2.22	2.39	2.43	2.68	2.84	2.89	3.06	3.10	3.35
6H	2.10	2.15	2.36	2.39	2.66	2.76	2.81	3.02	3.05	3.32
8H	2.09	2.13	2.35	2.38	2.66	2.75	2.79	3.01	3.04	3.32
12H	2.07	2.12	2.34	2.37	2.65	2.73	2.78	3.00	3.03	3.31
12H 4H	2.11	2.16	2.36	2.39	2.66	2.78	2.83	3.03	3.06	3.33
6H	2.09	2.13	2.35	2.38	2.66	2.75	2.79	3.01	3.04	3.32

C Range: 0 - 360 Deg  
 C Interval: 45.0 Deg  
 Test Speed: High  
 Temperature: 25  
 Operators: QC01  
 Test Date: 2024/10/15 15:40:32

G Range: 0 - 90 Deg  
 G Interval: 1.0 Deg  
 Test System: Huipu CPM-1600B Goniophotometer  
 Humidity: 60  
 Test Distance: 6.81 m  
 Remarks:

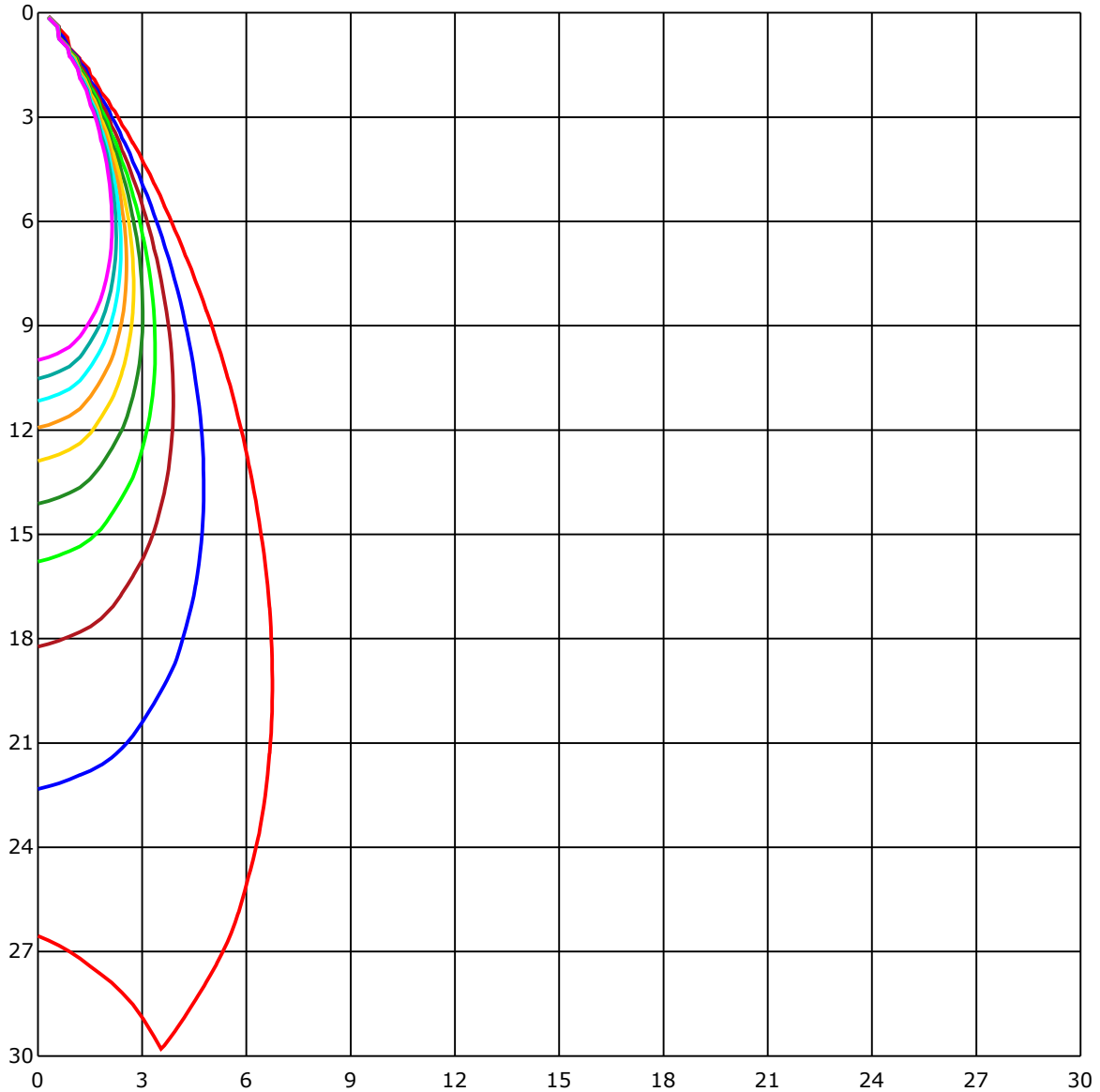




Report No.:

Test Time: 2024/10/15 15:40:32

### SPACE ISOLX DIAGRAM



Unit of illumination:lx

- |          |         |
|----------|---------|
| — 15.01  | — 7.505 |
| — 13.509 | — 6.004 |
| — 12.008 | — 4.503 |
| — 10.507 | — 3.002 |
| — 9.006  | — 1.501 |

C Range: 0 - 360 Deg  
 C Interval: 45.0 Deg  
 Test Speed: High  
 Temperature: 25  
 Operators: QC01  
 Test Date: 2024/10/15 15:40:32

G Range: 0 - 90 Deg  
 G Interval: 1.0 Deg  
 Test System: Huipu CPM-1600B Goniophotometer  
 Humidity: 60  
 Test Distance: 6.81 m  
 Remarks:

Report No.:

Test Time: 2024/10/15 15:40:32

## LUMINOUS DISTRIBUTION INTENSITY DATA

Gamma\C	C0	C45	C90	C135	C180	C225	C270	C315	C360	
G0	1496.0	1448.14	1480.97	1490.25	1496.0	1448.14	1480.97	1490.25	1496.0	
G1	1483.76	1425.88	1466.74	1494.93	1506.16	1464.56	1480.09	1490.44	1483.76	
G2	1469.47	1408.03	1455.61	1487.14	1511.86	1475.6	1489.79	1484.55	1469.47	
G3	1451.8	1382.01	1440.95	1480.33	1517.8	1486.96	1490.3	1479.72	1451.8	
G4	1436.22	1352.1	1428.89	1474.2	1518.03	1497.21	1492.24	1477.08	1436.22	
G5	1416.33	1318.24	1414.05	1468.73	1521.04	1502.73	1485.1	1466.97	1416.33	
G6	1388.04	1284.2	1404.22	1458.95	1525.31	1510.89	1478.38	1455.05	1388.04	
G7	1353.07	1246.73	1380.62	1448.47	1526.98	1518.4	1466.04	1443.92	1353.07	
G8	1307.3	1207.87	1359.05	1429.27	1524.01	1523.18	1452.73	1425.28	1307.3	
G9	1259.62	1157.18	1324.55	1411.83	1515.39	1518.08	1435.16	1400.09	1259.62	
G10	1213.15	1103.57	1289.63	1377.79	1498.55	1514.37	1414.05	1370.23	1213.15	
G11	1166.31	1046.89	1243.81	1339.39	1477.73	1498.6	1384.28	1331.74	1166.31	
G12	1116.69	993.1	1196.5	1292.32	1445.59	1475.09	1349.31	1281.65	1116.69	
G13	1054.31	936.98	1141.46	1239.03	1409.46	1449.58	1298.48	1227.95	1054.31	
G14	992.68	873.96	1084.92	1179.25	1365.03	1417.86	1243.02	1174.52	992.68	
G15	934.76	808.57	1026.44	1112.01	1314.35	1379.74	1172.99	1115.67	934.76	
G16	871.69	747.21	967.13	1043.74	1255.87	1332.76	1102.92	1054.31	871.69	
G17	806.85	685.3	905.26	976.73	1191.08	1277.34	1030.52	986.74	806.85	
G18	744.89	627.24	842.38	905.68	1121.79	1216.4	955.02	919.13	744.89	
G19	680.99	568.34	778.19	833.89	1053.99	1148.09	875.86	851.6	680.99	
G20	618.7	513.24	716.28	764.19	977.38	1074.63	799.01	783.39	618.7	
G21	560.08	461.44	652.7	698.7	899.97	994.67	726.85	714.66	560.08	
G22	501.23	410.01	593.15	631.74	821.51	919.27	657.38	648.01	501.23	
G23	443.77	362.24	534.21	570.29	748.09	839.36	587.4	582.07	443.77	
G24	390.21	318.6	476.1	509.49	676.26	762.61	519.69	516.12	390.21	
G25	342.39	276.36	420.31	450.08	611.24	686.41	455.69	455.65	342.39	
G26	296.34	235.03	369.48	390.58	544.59	613.74	398.97	400.23	296.34	
G27	256.18	198.58	319.35	339.19	483.98	546.73	343.14	349.54	256.18	
G28	217.41	164.91	277.47	292.31	424.48	486.25	293.7	303.02	217.41	
G29	182.81	135.51	237.82	249.78	368.55	427.87	246.77	259.8	182.81	
G30	151.79	110.47	201.88	209.67	317.63	370.36	207.12	218.71	151.79	
G31	124.33	90.06	169.37	174.88	270.23	319.07	170.71	182.68	124.33	
G32	100.36	72.81	140.61	144.04	228.4	271.95	139.08	153.32	100.36	
G33	82.27	58.62	115.8	117.01	193.39	229.61	114.87	128.55	82.27	
G34	66.6	46.42	95.3	95.49	159.81	193.2	93.26	105.18	66.6	
G35	52.45	35.25	77.03	77.77	132.13	160.69	73.51	84.5	52.45	
G36	40.95	24.76	61.59	61.91	110.51	133.66	56.63	67.15	40.95	

C Range: 0 - 360 Deg  
 C Interval: 45.0 Deg  
 Test Speed: High  
 Temperature: 25  
 Operators: QC01  
 Test Date: 2024/10/15 15:40:32

G Range: 0 - 90 Deg  
 G Interval: 1.0 Deg  
 Test System: Huipu CPM-1600B Goniophotometer  
 Humidity: 60  
 Test Distance: 6.81 m  
 Remarks:

Report No.:

Test Time: 2024/10/15 15:40:32

### LUMINOUS DISTRIBUTION INTENSITY DATA(Continue 1)

Gamma\C	C0	C45	C90	C135	C180	C225	C270	C315	C360	
G37	30.01	14.38	48.14	48.0	91.73	108.43	42.99	53.15	30.01	
G38	19.15	8.16	36.59	35.99	74.57	88.21	32.42	41.32	19.15	
G39	10.9	5.43	26.71	26.85	59.5	70.45	23.28	30.84	10.9	
G40	6.77	4.03	18.6	18.41	46.14	55.6	13.77	21.52	6.77	
G41	4.68	3.25	13.91	10.43	35.01	42.85	7.79	15.44	4.68	
G42	3.62	2.83	11.32	6.12	24.72	31.81	4.96	12.24	3.62	
G43	3.01	2.55	9.79	4.36	17.34	21.66	3.71	10.53	3.01	
G44	2.64	2.27	8.72	3.43	13.03	15.4	3.06	9.18	2.64	
G45	2.41	2.04	8.12	2.74	11.13	12.38	2.55	8.3	2.41	
G46	2.27	2.04	7.56	2.32	9.69	10.67	2.32	7.74	2.27	
G47	2.13	1.86	7.19	2.27	8.72	9.28	2.04	7.23	2.13	
G48	1.9	1.67	6.77	2.09	8.02	8.39	1.86	6.72	1.9	
G49	1.76	1.48	6.26	2.04	7.61	7.74	1.58	6.4	1.76	
G50	1.72	1.44	5.94	1.9	7.0	7.14	1.62	5.98	1.72	
G51	1.48	1.16	5.57	1.67	6.68	6.77	1.21	5.89	1.48	
G52	1.34	1.11	5.43	1.44	6.35	6.49	1.16	5.33	1.34	
G53	1.3	1.02	5.01	1.34	6.03	6.21	1.11	5.01	1.3	
G54	1.16	0.88	4.68	1.21	5.66	5.66	0.97	4.78	1.16	
G55	1.16	0.79	4.45	1.11	5.29	5.38	0.88	4.68	1.16	
G56	0.97	0.79	4.27	1.07	5.05	5.33	0.83	4.27	0.97	
G57	0.97	0.7	3.94	0.93	4.82	5.01	0.83	4.08	0.97	
G58	0.65	0.65	3.94	0.83	4.59	4.59	0.6	3.85	0.65	
G59	0.65	0.51	3.57	0.74	4.17	4.41	0.51	3.76	0.65	
G60	0.65	0.51	3.57	0.65	4.03	4.13	0.51	3.57	0.65	
G61	0.65	0.37	3.25	0.6	3.85	3.9	0.42	3.43	0.65	
G62	0.56	0.37	3.15	0.46	3.62	3.66	0.35	3.2	0.56	
G63	0.42	0.28	2.97	0.37	3.39	3.52	0.28	2.97	0.42	
G64	0.32	0.14	2.97	0.32	3.15	3.2	0.23	2.83	0.32	
G65	0.19	0.05	2.55	0.23	3.06	3.06	0.09	2.5	0.19	
G66	0.14	0.0	2.32	0.23	2.92	2.97	0.0	2.32	0.14	
G67	0.09	0.0	2.13	0.0	2.92	2.78	0.0	2.32	0.09	
G68	0.0	0.0	1.99	0.0	2.64	2.6	0.0	2.04	0.0	
G69	0.0	0.0	1.86	0.0	2.46	2.37	0.0	1.95	0.0	
G70	0.0	0.0	1.58	0.0	2.23	2.23	0.0	1.81	0.0	
G71	0.0	0.0	1.44	0.0	2.04	2.09	0.0	1.67	0.0	
G72	0.0	0.0	1.39	0.0	1.86	2.04	0.0	1.58	0.0	
G73	0.0	0.0	1.16	0.0	1.67	1.9	0.0	1.21	0.0	

C Range: 0 - 360 Deg  
 C Interval: 45.0 Deg  
 Test Speed: High  
 Temperature: 25  
 Operators: QC01  
 Test Date: 2024/10/15 15:40:32

G Range: 0 - 90 Deg  
 G Interval: 1.0 Deg  
 Test System: Huipu CPM-1600B Goniophotometer  
 Humidity: 60  
 Test Distance: 6.81 m  
 Remarks:

