

Report No.:

Test Time: 2025/8/1 17:27:11

## LUMINAIRE PHOTOMETRIC TEST REPORT

### Luminaire Property

Manufacturer: InBright  
 Luminaire Type: IBSP104SCT095H98-2F-EB-38°  
 Lamp Type:  
 Luminous Width: 90 mm  
 Luminous Length: 185 mm  
 Luminous Height: 70 mm

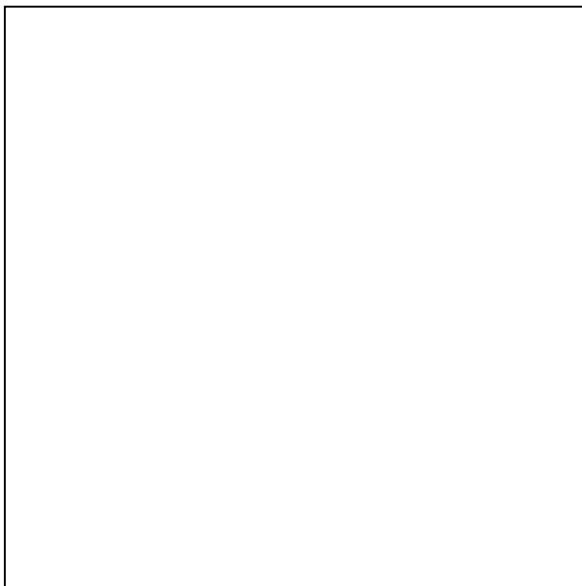
Voltage(V): 219.80 V  
 Current(A): 0.1380 A  
 Power(W): 28.82 W  
 Power Factor: 0.9490  
 Lamp Luminous Flux: 1867.39

### Photometric Results

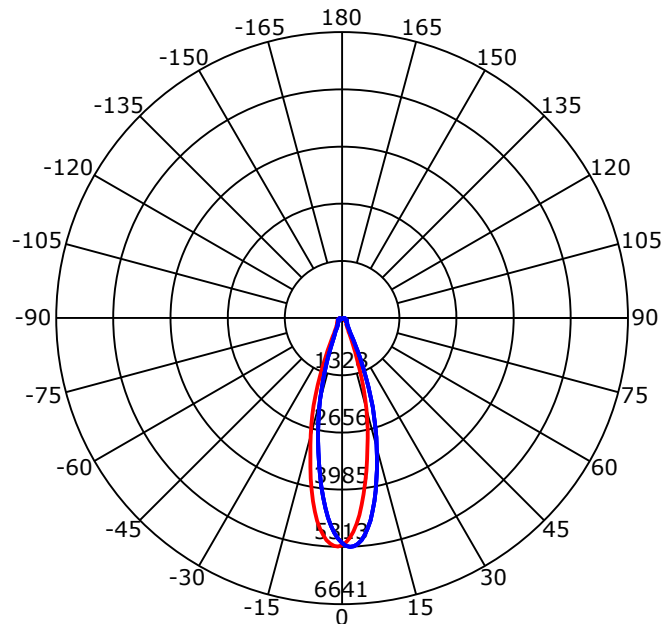
CIE Class: Direct  
 Luminaire Luminous Flux: 1867.386 lm  
 Downward Ratio: 100.00%  
 Luminaire Efficacy Rating(LER): 64.79 lm/W  
 Beam Angle(50%) C0-180,C90-270: 28.6,29.1  
 Field Angle(10%) C0-180,C90-270: 49.7,50.4  
 S/MH C0-180,C90-270: 0.499,0.499

Max. Intensity: 5312.86 cd  
 Max.Intensity Angle: C=90 Gamma=2  
 Upward Ratio: 0.00%  
 Efficacy: 100.00%  
 Center Intensity: 5272.65 cd  
 Effective Luminous Flux: 1298.85 lm  
 ERP( $\phi$ use)(120deg): 1736.06 lm

Picture of Luminaire



Luminous Intensity Distribution Curve



Beam Angle(50%) C0-180,C90-270: 28.6 deg,29.1 deg

C0-180 — C90-270 —

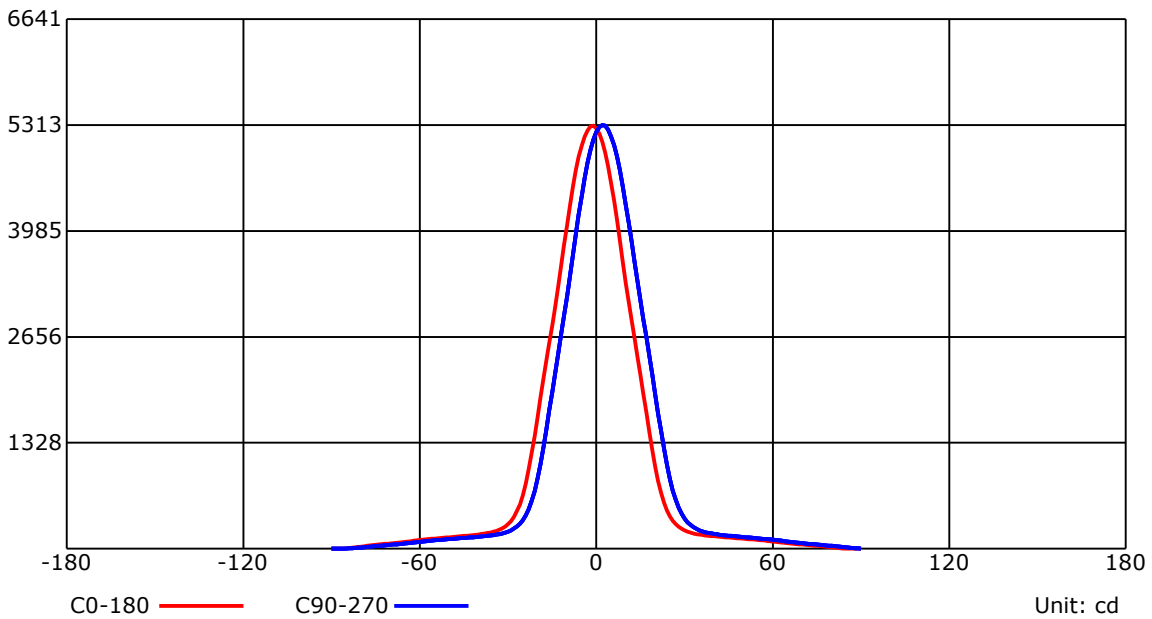
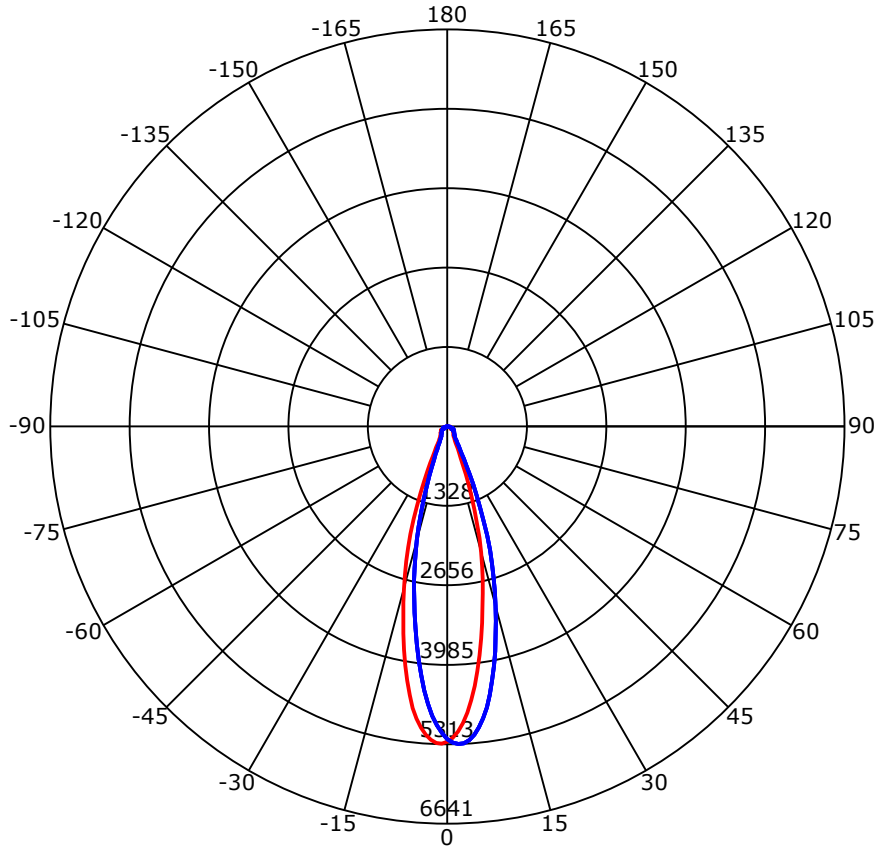
C Range: 0 - 360 Deg  
 C Interval: 45.0 Deg  
 Test Speed: High  
 Temperature: 25  
 Operators: QC01  
 Test Date: 2025/8/1 17:27:11

G Range: 0 - 90 Deg  
 G Interval: 1.0 Deg  
 Test System: Huipu CPM-1600B Goniophotometer  
 Humidity: 60  
 Test Distance: 6.87 m  
 Remarks:

Report No.:

Test Time: 2025/8/1 17:27:11

## Luminous Intensity Distribution Curve



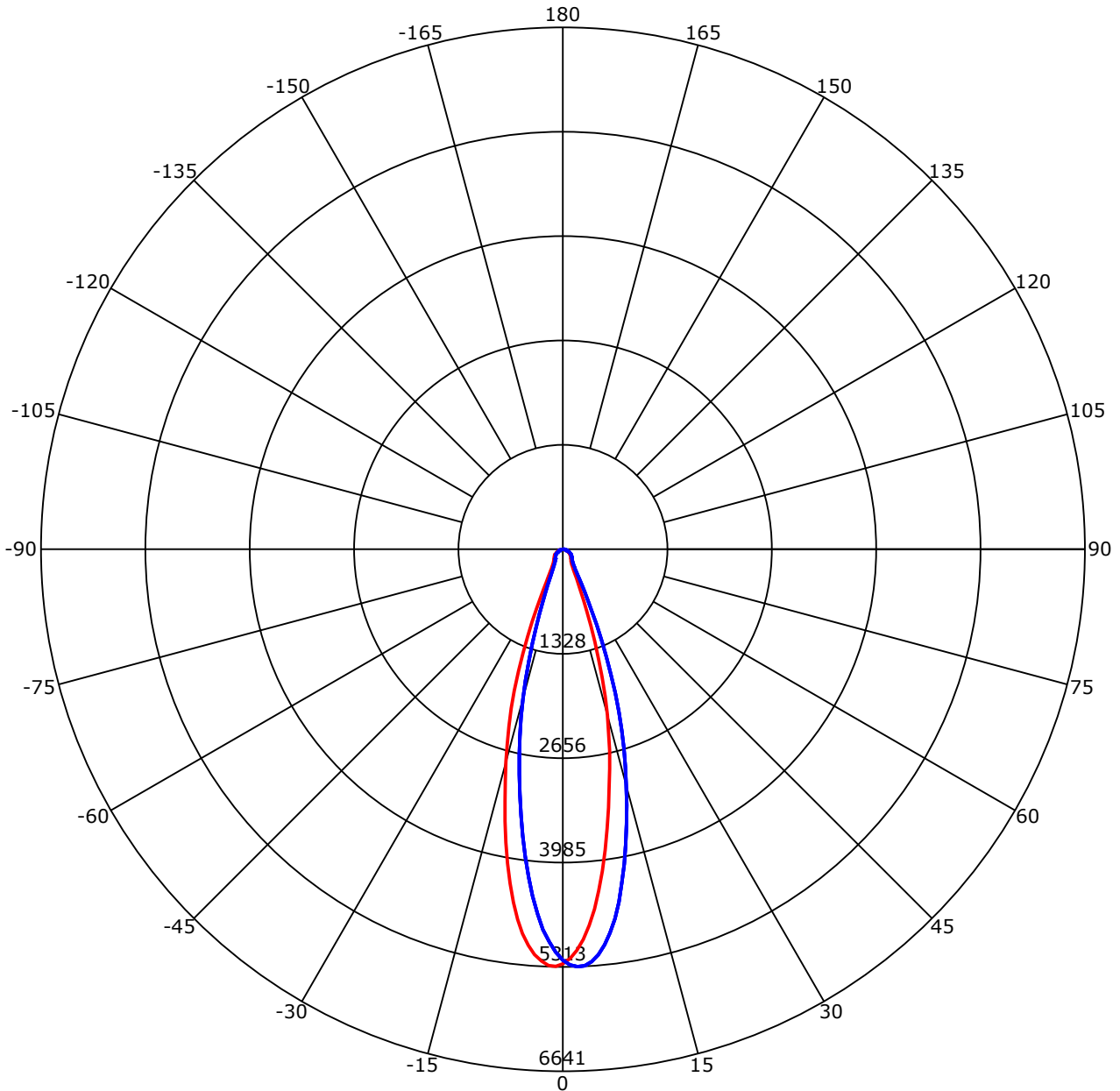
C Range: 0 - 360 Deg  
 C Interval: 45.0 Deg  
 Test Speed: High  
 Temperature: 25  
 Operators: QC01  
 Test Date: 2025/8/1 17:27:11

G Range: 0 - 90 Deg  
 G Interval: 1.0 Deg  
 Test System: Huipu CPM-1600B Goniophotometer  
 Humidity: 60  
 Test Distance: 6.87 m  
 Remarks:

Report No.:

Test Time: 2025/8/1 17:27:11

## Luminous Intensity Distribution Curve



C0-180 ——— C90-270 ———  
 Unit: cd/klm

C Range: 0 - 360 Deg  
 C Interval: 45.0 Deg  
 Test Speed: High  
 Temperature: 25  
 Operators: QC01  
 Test Date: 2025/8/1 17:27:11

G Range: 0 - 90 Deg  
 G Interval: 1.0 Deg  
 Test System: Huipu CPM-1600B Goniophotometer  
 Humidity: 60  
 Test Distance: 6.87 m  
 Remarks:

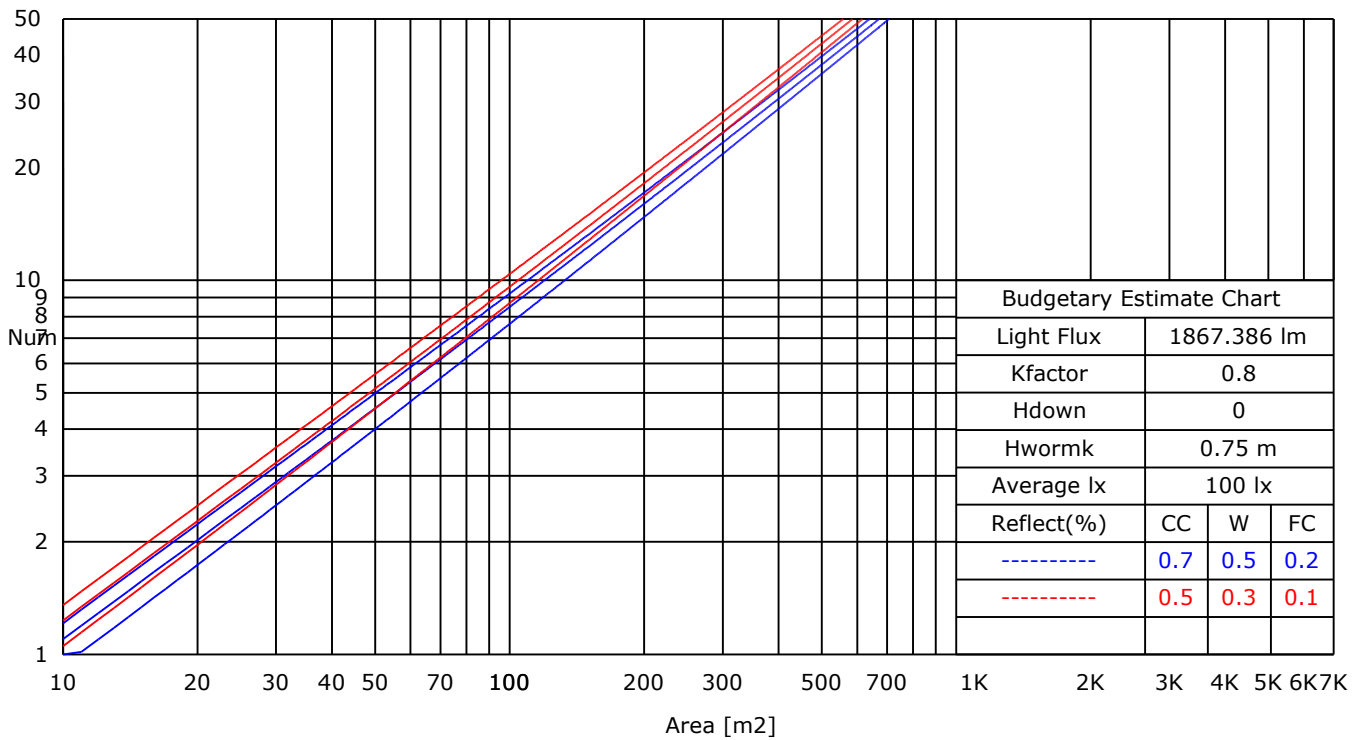
Report No.:

Test Time: 2025/8/1 17:27:11

### UTILIZATION FACTORS TABLE

RHOCC	80			70			50			30			10			0
RHOW	50	30	10	50	30	10	50	30	10	50	30	10	50	30	10	0
RCR	COEFFICIENTS OF UTILIZATION FOR RHOFC=20															
0	1.19	1.19	1.19	1.16	1.16	1.16	1.11	1.11	1.11	1.06	1.06	1.06	1.02	1.02	1.02	1.00
1	0.94	0.91	0.89	0.93	0.90	0.87	0.90	0.87	0.84	0.86	0.83	0.80	0.81	0.77	0.74	0.69
2	0.88	0.85	0.84	0.88	0.84	0.82	0.85	0.82	0.79	0.82	0.78	0.75	0.78	0.73	0.70	0.65
3	0.83	0.81	0.79	0.83	0.80	0.78	0.81	0.77	0.74	0.78	0.74	0.71	0.75	0.70	0.66	0.62
4	0.79	0.77	0.75	0.79	0.76	0.74	0.77	0.74	0.71	0.75	0.71	0.67	0.72	0.67	0.63	0.59
5	0.76	0.74	0.72	0.75	0.73	0.71	0.74	0.70	0.68	0.72	0.68	0.64	0.69	0.65	0.61	0.57
6	0.73	0.71	0.70	0.73	0.70	0.68	0.71	0.68	0.65	0.70	0.65	0.62	0.67	0.62	0.58	0.55
7	0.71	0.69	0.68	0.70	0.68	0.66	0.69	0.65	0.63	0.67	0.63	0.60	0.65	0.60	0.56	0.53
8	0.68	0.67	0.66	0.68	0.66	0.64	0.67	0.63	0.61	0.65	0.61	0.58	0.64	0.59	0.55	0.52
9	0.67	0.65	0.64	0.66	0.64	0.63	0.65	0.62	0.60	0.64	0.59	0.57	0.62	0.57	0.53	0.50
10	0.65	0.63	0.63	0.65	0.62	0.61	0.63	0.60	0.58	0.62	0.58	0.55	0.60	0.56	0.52	0.49

### LUMINAIRE BUDGETARY ESTIMATE DIAGRAM



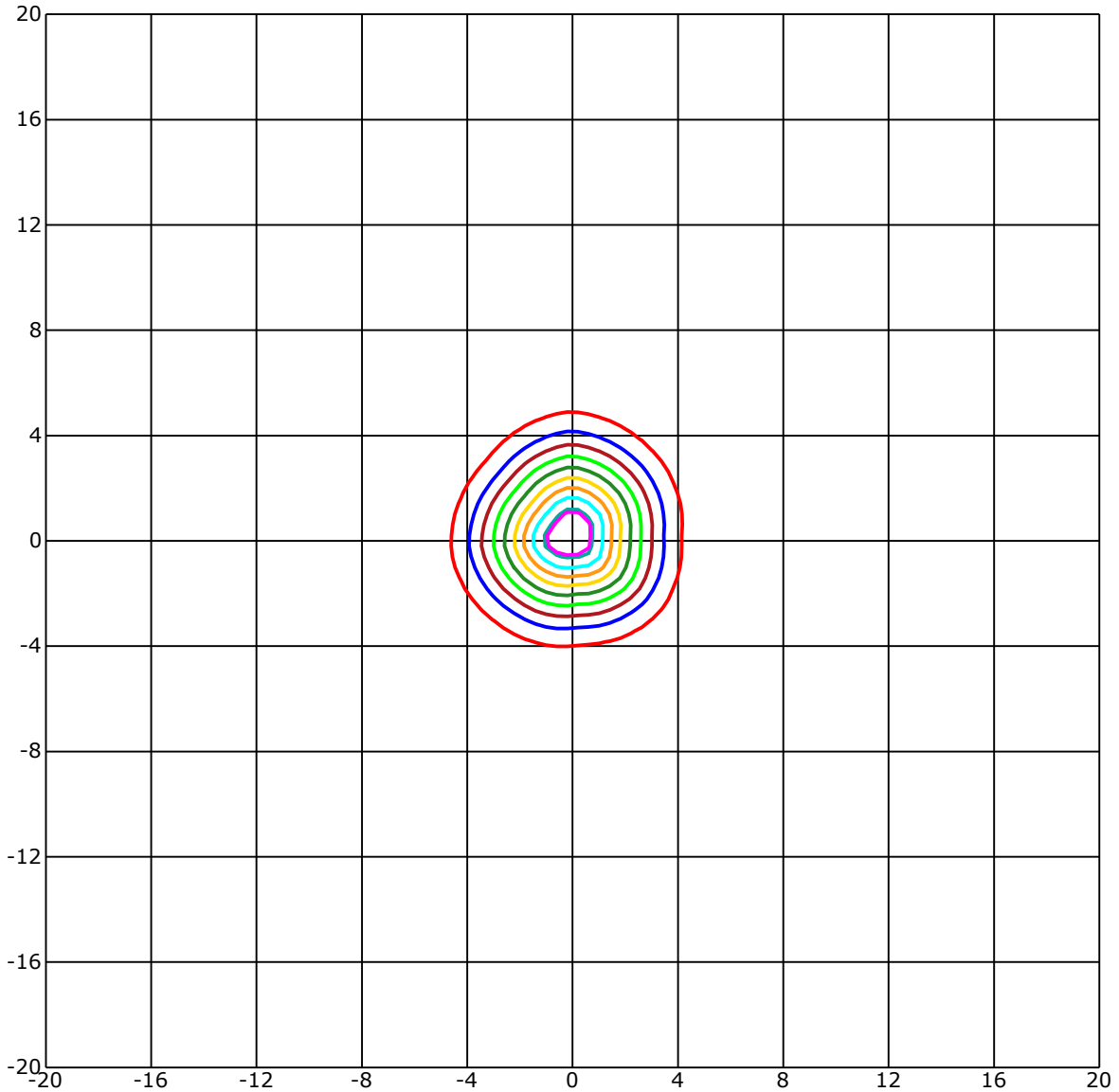
C Range: 0 - 360 Deg  
 C Interval: 45.0 Deg  
 Test Speed: High  
 Temperature: 25  
 Operators: QC01  
 Test Date: 2025/8/1 17:27:11

G Range: 0 - 90 Deg  
 G Interval: 1.0 Deg  
 Test System: Huipu CPM-1600B Goniophotometer  
 Humidity: 60  
 Test Distance: 6.87 m  
 Remarks:

Report No.:

Test Time: 2025/8/1 17:27:11

## ISOLX DIAGRAM



Unit of illumination:lx    Height of plane:10.0(m)/32.81(ft)

— 48.839(92%Emax)	— 26.543(50%Emax)
— 47.778(90%Emax)	— 21.234(40%Emax)
— 42.469(80%Emax)	— 15.926(30%Emax)
— 37.16(70%Emax)	— 10.617(20%Emax)
— 31.852(60%Emax)	— 5.309(10%Emax)

C Range: 0 - 360 Deg  
 C Interval: 45.0 Deg  
 Test Speed: High  
 Temperature: 25  
 Operators: QC01  
 Test Date: 2025/8/1 17:27:11

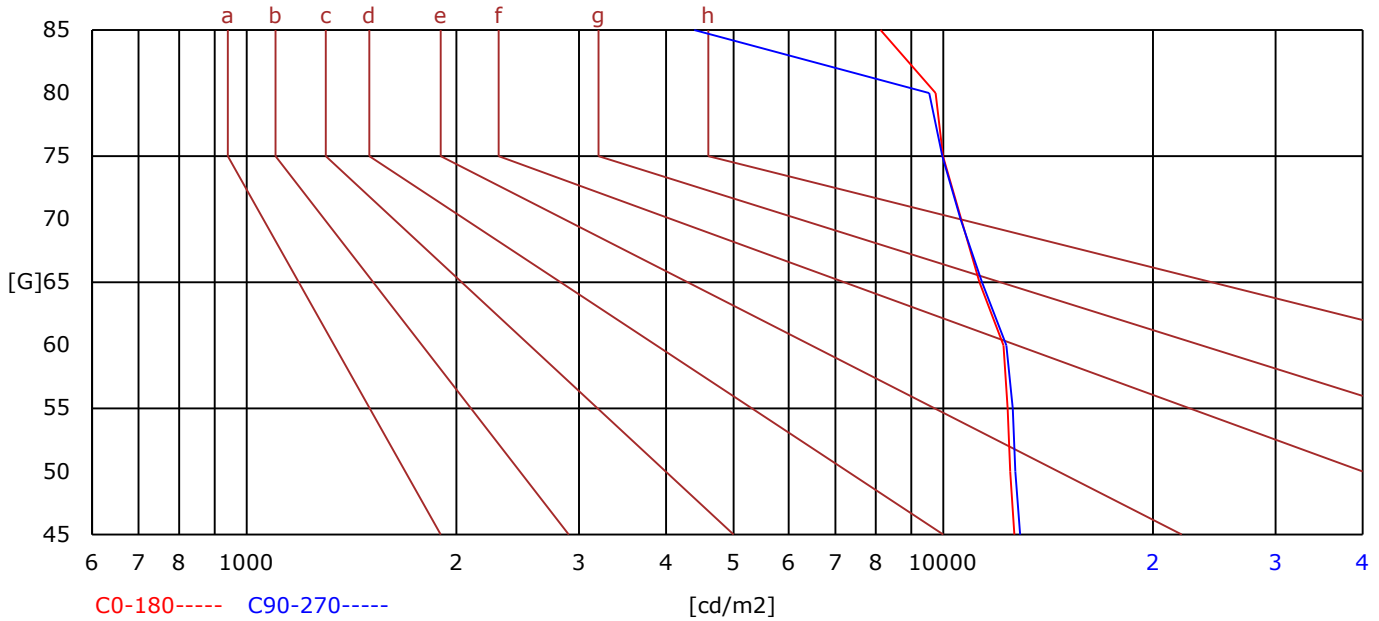
G Range: 0 - 90 Deg  
 G Interval: 1.0 Deg  
 Test System: Huipu CPM-1600B Goniophotometer  
 Humidity: 60  
 Test Distance: 6.87 m  
 Remarks:

Report No.:

Test Time: 2025/8/1 17:27:11

## BRIGHT LIMIT DIAGRAM

C/G	45	50	55	60	65	70	75	80	85
C0	12644	12476	12375	12200	11275	10609	9988	9745	8131
C90	12896	12687	12582	12319	11362	10584	9967	9550	4391
Dazzle	Quality	Illuminance	---	---	---	---	---	---	---
1.15	A	2000	1000	500	<=300				
1.5	B		2000	1000	500	<=300			
1.85	C			2000	1000	500	<=300		
2.2	D				2000	1000	500	<=300	
2.55	E					2000	1000	500	<=300
---	---	a	b	c	d	e	f	g	h



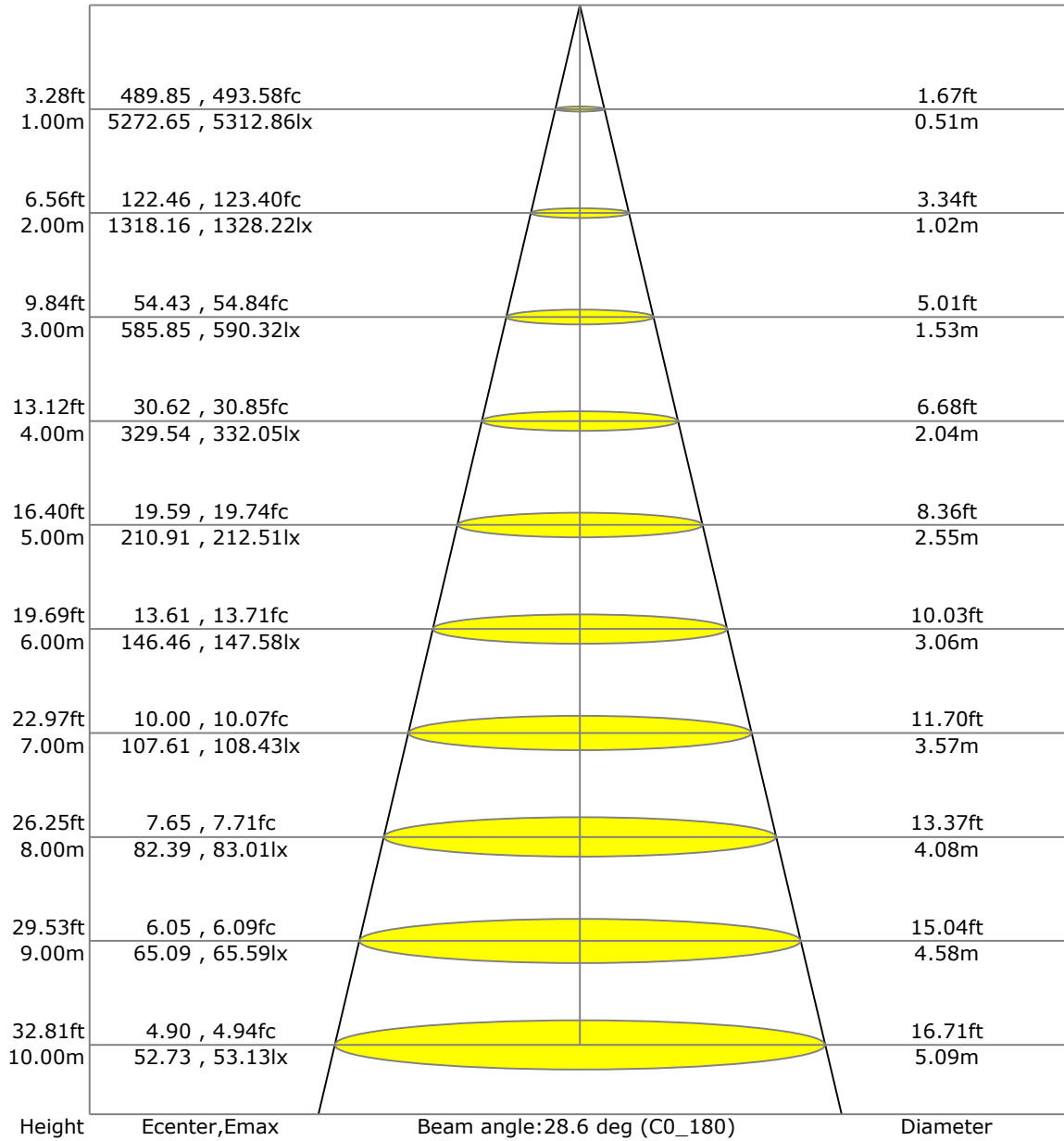
C Range: 0 - 360 Deg  
 C Interval: 45.0 Deg  
 Test Speed: High  
 Temperature: 25  
 Operators: QC01  
 Test Date: 2025/8/1 17:27:11

G Range: 0 - 90 Deg  
 G Interval: 1.0 Deg  
 Test System: Huipu CPM-1600B Goniophotometer  
 Humidity: 60  
 Test Distance: 6.87 m  
 Remarks:

Report No.:

Test Time: 2025/8/1 17:27:11

## LX-DISTANCE DIAGRAM



C Range: 0 - 360 Deg  
 C Interval: 45.0 Deg  
 Test Speed: High  
 Temperature: 25  
 Operators: QC01  
 Test Date: 2025/8/1 17:27:11

G Range: 0 - 90 Deg  
 G Interval: 1.0 Deg  
 Test System: Huipu CPM-1600B Goniophotometer  
 Humidity: 60  
 Test Distance: 6.87 m  
 Remarks:

Report No.:

Test Time: 2025/8/1 17:27:11

## UGR(Unified Glare Rating) TABLE

RHOCC	70	70	50	50	30	70	70	50	50	30
RHOW	50	30	50	30	30	50	30	50	30	30
RHOF	20	20	20	20	20	20	20	20	20	20
Room Size X	Viewed Endwise					Viewed Crosswise				
2H 2H	12.04	12.10	12.24	12.29	12.53	12.35	12.42	12.55	12.60	12.85
3H	12.23	12.29	12.43	12.48	12.73	12.49	12.55	12.70	12.75	12.99
4H	12.26	12.32	12.47	12.51	12.76	12.50	12.57	12.72	12.76	13.01
6H	12.25	12.31	12.47	12.51	12.77	12.49	12.56	12.71	12.76	13.01
8H	12.24	12.30	12.46	12.51	12.76	12.48	12.55	12.70	12.75	13.00
12H	12.23	12.29	12.45	12.50	12.75	12.47	12.54	12.70	12.74	13.00
4H 2H	13.97	14.03	14.18	14.23	14.47	14.69	14.75	14.90	14.94	15.19
3H	14.34	14.40	14.56	14.60	14.86	14.99	15.05	15.21	15.26	15.51
4H	14.43	14.49	14.66	14.71	14.97	15.06	15.12	15.29	15.33	15.59
6H	14.47	14.53	14.71	14.75	15.02	15.07	15.13	15.31	15.35	15.61
8H	14.47	14.53	14.71	14.76	15.02	15.06	15.12	15.30	15.34	15.61
12H	14.46	14.52	14.71	14.75	15.02	15.04	15.10	15.29	15.33	15.60
8H 4H	14.28	14.34	14.50	14.55	14.80	15.34	15.40	15.56	15.60	15.86
6H	15.02	15.08	15.28	15.32	15.59	16.01	16.07	16.27	16.31	16.58
8H	15.05	15.11	15.32	15.35	15.63	16.02	16.07	16.28	16.32	16.60
12H	15.06	15.11	15.33	15.36	15.64	16.01	16.06	16.28	16.31	16.60
12H 4H	14.92	14.98	15.17	15.21	15.48	16.12	16.18	16.37	16.41	16.68
6H	15.05	15.10	15.31	15.35	15.62	16.24	16.29	16.50	16.54	16.82

C Range: 0 - 360 Deg  
 C Interval: 45.0 Deg  
 Test Speed: High  
 Temperature: 25  
 Operators: QC01  
 Test Date: 2025/8/1 17:27:11

G Range: 0 - 90 Deg  
 G Interval: 1.0 Deg  
 Test System: Huipu CPM-1600B Goniophotometer  
 Humidity: 60  
 Test Distance: 6.87 m  
 Remarks:



Report No.:

Test Time: 2025/8/1 17:27:11

### ZONAL LUMINOUS FLUX TABLE

Gamma [deg]	Imean [cd]	Zonal Flux [lm]	Sum Flux [lm]	Zonal Flux [%]	Sum Flux [%]
0	5270.90	0.00	0.00	0.00	0.00
5	4986.78	120.71	120.71	6.46	6.46
10	3967.15	303.97	424.68	16.28	22.74
15	2746.06	363.92	788.60	19.49	42.23
20	1584.80	314.57	1103.17	16.85	59.08
25	667.82	188.12	1291.29	10.07	69.15
30	307.20	97.33	1388.62	5.21	74.36
35	205.35	67.02	1455.64	3.59	77.95
40	171.22	59.88	1515.52	3.21	81.16
45	152.43	58.37	1573.89	3.13	84.28
50	136.52	57.03	1630.92	3.05	87.34
55	121.17	54.65	1685.58	2.93	90.26
60	103.57	50.48	1736.06	2.70	92.97
65	81.93	42.94	1779.00	2.30	95.27
70	62.54	34.51	1813.51	1.85	97.11
75	45.34	26.34	1839.85	1.41	98.53
80	28.29	17.92	1857.77	0.96	99.48
85	9.75	8.40	1866.17	0.45	99.94
90	0.75	1.21	1867.39	0.06	100.00

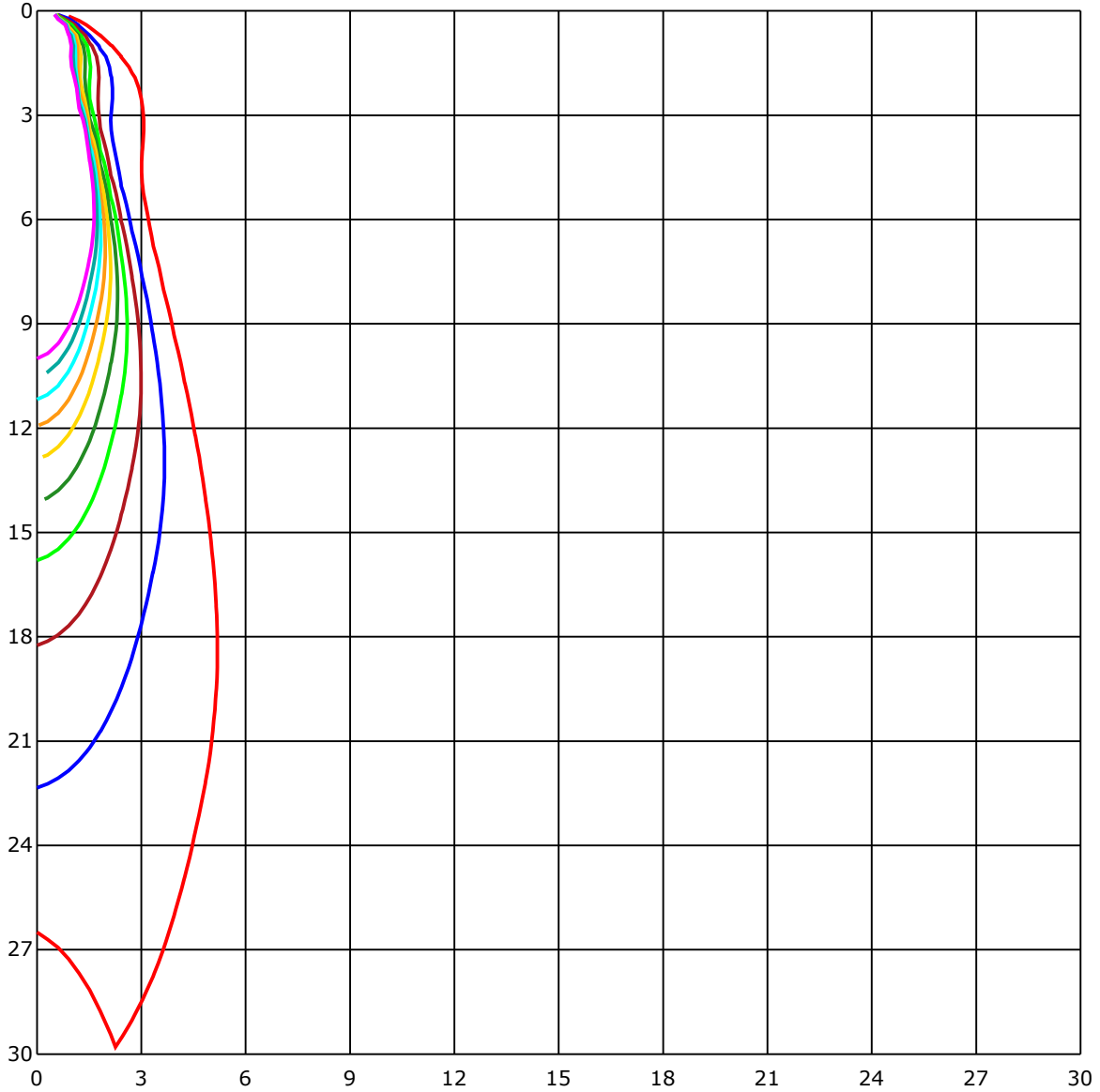
C Range: 0 - 360 Deg  
 C Interval: 45.0 Deg  
 Test Speed: High  
 Temperature: 25  
 Operators: QC01  
 Test Date: 2025/8/1 17:27:11

G Range: 0 - 90 Deg  
 G Interval: 1.0 Deg  
 Test System: Huipu CPM-1600B Goniophotometer  
 Humidity: 60  
 Test Distance: 6.87 m  
 Remarks:

Report No.:

Test Time: 2025/8/1 17:27:11

## SPACE ISOLX DIAGRAM



Unit of illumination:lx

- |          |          |
|----------|----------|
| — 52.812 | — 26.406 |
| — 47.531 | — 21.125 |
| — 42.25  | — 15.844 |
| — 36.968 | — 10.562 |
| — 31.687 | — 5.281  |

C Range: 0 - 360 Deg  
 C Interval: 45.0 Deg  
 Test Speed: High  
 Temperature: 25  
 Operators: QC01  
 Test Date: 2025/8/1 17:27:11

G Range: 0 - 90 Deg  
 G Interval: 1.0 Deg  
 Test System: Huipu CPM-1600B Goniophotometer  
 Humidity: 60  
 Test Distance: 6.87 m  
 Remarks:

Report No.:

Test Time: 2025/8/1 17:27:11

## LUMINOUS DISTRIBUTION INTENSITY DATA

Gamma\C	C0	C45	C90	C135	C180	C225	C270	C315	C360	
G0	5272.65	5275.62	5226.73	5308.61	5272.65	5275.62	5226.73	5308.61	5272.65	
G1	5206.15	5286.38	5290.06	5309.23	5306.06	5223.33	5129.36	5264.48	5206.15	
G2	5105.9	5262.12	5312.86	5274.11	5296.58	5136.82	4999.52	5186.04	5105.9	
G3	4969.03	5199.92	5305.36	5205.63	5246.5	5023.64	4843.91	5081.45	4969.03	
G4	4797.61	5103.26	5256.41	5106.37	5168.63	4876.62	4650.41	4934.91	4797.61	
G5	4593.25	4975.88	5173.63	4970.16	5056.44	4700.43	4427.21	4758.77	4593.25	
G6	4364.34	4814.75	5059.7	4800.87	4915.79	4491.59	4188.73	4550.58	4364.34	
G7	4124.07	4625.2	4918.72	4599.2	4743.05	4269.9	3934.24	4313.75	4124.07	
G8	3861.75	4407.2	4745.27	4374.35	4535.43	4022.88	3676.5	4068.61	3861.75	
G9	3594.89	4176.97	4542.32	4131.0	4303.18	3761.83	3418.66	3808.37	3594.89	
G10	3335.69	3930.7	4316.16	3868.45	4057.66	3507.49	3160.68	3541.75	3335.69	
G11	3085.54	3675.36	4081.97	3615.66	3801.29	3254.84	2912.43	3294.44	3085.54	
G12	2855.6	3421.3	3844.52	3360.18	3538.07	3011.26	2677.34	3052.04	2855.6	
G13	2636.09	3177.01	3591.21	3115.33	3282.78	2774.99	2439.7	2824.83	2636.09	
G14	2403.46	2937.96	3353.01	2881.23	3035.47	2546.98	2206.93	2603.48	2403.46	
G15	2181.02	2703.11	3114.9	2651.52	2804.11	2309.2	1966.65	2384.44	2181.02	
G16	1944.89	2481.05	2880.85	2426.2	2574.4	2076.14	1730.76	2154.59	1944.89	
G17	1701.73	2251.53	2650.63	2199.94	2352.58	1835.06	1488.5	1917.85	1701.73	
G18	1462.44	2013.7	2419.97	1953.34	2127.87	1598.51	1266.39	1673.7	1462.44	
G19	1240.95	1774.46	2187.91	1712.02	1899.91	1365.08	1061.6	1436.49	1240.95	
G20	1034.56	1542.91	1942.34	1471.32	1651.14	1155.76	882.49	1215.6	1034.56	
G21	852.28	1313.77	1701.21	1246.8	1416.33	961.92	724.9	1011.71	852.28	
G22	697.66	1105.12	1472.35	1037.53	1193.0	796.12	596.76	832.84	697.66	
G23	573.49	918.92	1255.34	855.77	995.67	654.86	495.43	687.94	573.49	
G24	477.63	758.6	1054.66	702.34	818.02	545.5	417.79	568.01	477.63	
G25	405.94	626.44	877.67	579.58	672.13	459.89	358.89	476.78	405.94	
G26	348.69	522.14	729.1	483.53	556.45	393.76	313.48	405.99	348.69	
G27	305.65	438.46	607.75	409.48	469.04	342.6	279.03	353.27	305.65	
G28	273.32	374.79	512.18	354.17	399.62	303.95	252.5	311.83	273.32	
G29	248.07	325.8	437.23	311.74	348.27	274.54	231.41	280.59	248.07	
G30	228.43	288.23	378.38	279.22	309.19	251.13	214.98	256.18	228.43	
G31	213.38	259.54	332.22	254.63	280.07	232.87	201.86	236.83	213.38	
G32	200.78	238.25	296.54	235.18	255.85	218.43	191.53	221.64	200.78	
G33	191.38	220.83	269.02	220.27	237.78	207.01	182.98	208.89	191.38	
G34	183.36	207.67	248.16	207.71	223.48	197.71	175.81	198.93	183.36	
G35	177.32	197.05	231.6	198.42	212.24	189.73	169.96	190.96	177.32	
G36	171.75	188.69	218.52	190.25	203.14	183.45	164.95	183.97	171.75	

C Range: 0 - 360 Deg

C Interval: 45.0 Deg

Test Speed: High

Temperature: 25

Operators: QC01

Test Date: 2025/8/1 17:27:11

G Range: 0 - 90 Deg

G Interval: 1.0 Deg

Test System: Huipu CPM-1600B Goniophotometer

Humidity: 60

Test Distance: 6.87 m

Remarks:

Report No.:

Test Time: 2025/8/1 17:27:11

### LUMINOUS DISTRIBUTION INTENSITY DATA(Continue 1)

Gamma\C	C0	C45	C90	C135	C180	C225	C270	C315	C360	
G37	167.31	181.47	207.76	183.88	196.06	178.03	160.66	178.31	167.31	
G38	163.02	175.71	199.31	178.17	189.68	173.26	156.5	173.21	163.02	
G39	159.24	170.62	191.81	173.4	184.12	168.63	152.87	169.11	159.24	
G40	155.7	166.23	185.44	169.3	179.4	164.86	150.46	164.76	155.7	
G41	152.63	162.17	180.39	165.57	175.29	160.89	146.26	161.6	152.63	
G42	149.19	158.72	175.43	161.74	171.23	157.45	143.43	157.26	149.19	
G43	145.98	155.18	171.09	158.58	167.55	154.05	140.32	154.05	145.98	
G44	142.82	151.79	167.5	155.42	163.44	150.65	137.34	150.46	142.82	
G45	139.94	148.86	163.54	151.83	159.9	147.3	134.61	147.49	139.94	
G46	136.97	145.56	159.9	148.39	156.5	144.38	131.82	144.47	136.97	
G47	134.04	142.16	156.36	145.51	153.06	140.65	128.75	141.07	134.04	
G48	131.3	139.18	152.87	142.06	149.61	137.81	125.78	137.86	131.3	
G49	128.33	136.16	149.47	138.99	146.31	134.51	123.0	135.36	128.33	
G50	125.17	133.52	146.36	135.79	142.82	131.63	120.3	131.77	125.17	
G51	122.24	130.26	143.01	132.81	140.17	128.42	117.0	129.08	122.24	
G52	119.03	127.71	139.84	129.65	136.3	125.64	114.45	125.73	119.03	
G53	116.25	124.41	136.64	126.58	133.52	122.33	111.15	122.85	116.25	
G54	113.04	121.25	133.43	123.37	130.41	119.36	108.79	119.74	113.04	
G55	110.35	118.18	129.79	120.16	127.29	116.43	105.67	116.86	110.35	
G56	107.14	115.54	126.77	116.91	123.56	113.51	102.13	113.65	107.14	
G57	103.74	112.19	123.51	113.74	120.59	109.83	97.65	110.82	103.74	
G58	99.21	109.31	120.54	110.49	117.14	105.53	93.12	106.52	99.21	
G59	94.49	105.67	117.0	106.81	113.93	100.67	88.49	101.52	94.49	
G60	89.86	101.57	113.56	102.56	109.5	96.14	84.67	96.8	89.86	
G61	85.66	97.13	109.36	97.46	104.59	91.7	80.33	92.55	85.66	
G62	81.56	92.27	104.82	92.65	99.82	87.88	76.55	88.21	81.56	
G63	77.5	87.74	99.63	88.26	95.43	83.63	72.54	84.15	77.5	
G64	73.39	83.44	95.24	83.73	90.95	79.72	68.95	80.0	73.39	
G65	69.8	79.34	90.62	79.95	86.61	75.7	64.99	75.94	69.8	
G66	65.6	75.28	86.32	75.56	82.45	71.83	61.54	72.02	65.6	
G67	62.06	71.41	82.08	71.79	78.35	67.92	58.1	68.25	62.06	
G68	58.38	67.59	78.02	67.73	74.05	64.57	54.84	64.71	58.38	
G69	55.17	63.76	73.91	63.95	70.18	60.88	51.35	61.12	55.17	
G70	51.73	60.41	70.13	60.27	66.41	57.25	47.62	57.67	51.73	
G71	48.09	56.87	66.36	56.83	62.91	53.9	44.6	54.32	48.09	
G72	44.79	53.47	62.58	53.43	59.37	50.69	41.49	50.93	44.79	
G73	41.77	49.93	58.95	50.03	55.79	47.1	38.56	47.39	41.77	

C Range: 0 - 360 Deg  
 C Interval: 45.0 Deg  
 Test Speed: High  
 Temperature: 25  
 Operators: QC01  
 Test Date: 2025/8/1 17:27:11

G Range: 0 - 90 Deg  
 G Interval: 1.0 Deg  
 Test System: Huipu CPM-1600B Goniophotometer  
 Humidity: 60  
 Test Distance: 6.87 m  
 Remarks:

Report No.:

Test Time: 2025/8/1 17:27:11

### LUMINOUS DISTRIBUTION INTENSITY DATA(Continue 2)

Gamma\C	C0	C45	C90	C135	C180	C225	C270	C315	C360	
G74	38.75	46.25	55.46	46.3	52.29	44.03	35.54	44.13	38.75	
G75	35.63	43.04	51.96	42.95	48.47	40.97	32.52	41.06	35.63	
G76	32.0	40.12	48.42	39.79	44.32	37.85	29.07	38.04	32.0	
G77	28.41	36.96	44.98	36.72	39.88	34.69	25.63	35.21	28.41	
G78	24.26	33.98	41.77	33.65	35.21	31.67	22.32	32.09	24.26	
G79	20.11	31.01	38.56	30.63	30.35	27.89	18.69	29.07	20.11	
G80	16.0	28.18	35.21	27.61	25.53	23.98	15.1	26.29	16.0	
G81	12.22	25.39	31.43	24.21	21.24	19.4	11.75	23.36	12.22	
G82	8.54	22.61	27.85	19.92	17.13	14.68	8.54	19.82	8.54	
G83	5.1	19.54	24.02	15.57	13.07	10.1	5.29	15.76	5.1	
G84	1.56	15.95	20.29	10.86	8.83	5.9	3.21	11.37	1.56	
G85	0.0	11.8	16.71	6.37	5.05	2.64	2.03	7.08	0.0	
G86	0.0	7.6	12.98	2.5	1.98	1.32	0.47	3.21	0.0	
G87	0.0	3.68	8.83	0.0	1.18	1.09	0.0	1.56	0.0	
G88	0.0	0.33	6.14	0.0	0.9	0.76	0.0	0.94	0.0	
G89	0.0	0.0	4.44	0.0	0.61	0.33	0.0	0.61	0.0	
G90	0.0	0.0	0.0	0.0	0.0	0.33	0.0	0.61	0.0	

C Range: 0 - 360 Deg  
 C Interval: 45.0 Deg  
 Test Speed: High  
 Temperature: 25  
 Operators: QC01  
 Test Date: 2025/8/1 17:27:11

G Range: 0 - 90 Deg  
 G Interval: 1.0 Deg  
 Test System: Huipu CPM-1600B Goniophotometer  
 Humidity: 60  
 Test Distance: 6.87 m  
 Remarks: