

Report No.:

Test Time: 2024/10/27 14:32:23

LUMINAIRE PHOTOMETRIC TEST REPORT

Luminaire Property

Manufacturer: InBright
 Luminaire Type: IBSP151CT095H67-38°-10W
 Lamp Type:
 Luminous Width: 80 mm
 Luminous Length: 80 mm
 Luminous Height: 63 mm

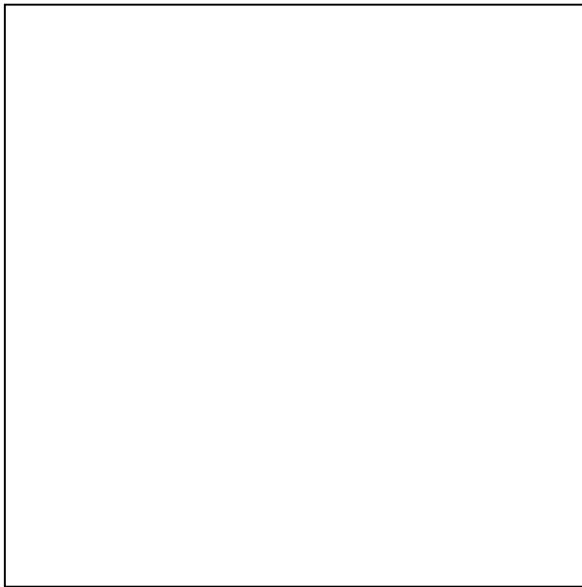
Voltage(V): 219.40 V
 Current(A): 0.0540 A
 Power(W): 10.75 W
 Power Factor: 0.8940
 Lamp Luminous Flux: 1097.85

Photometric Results

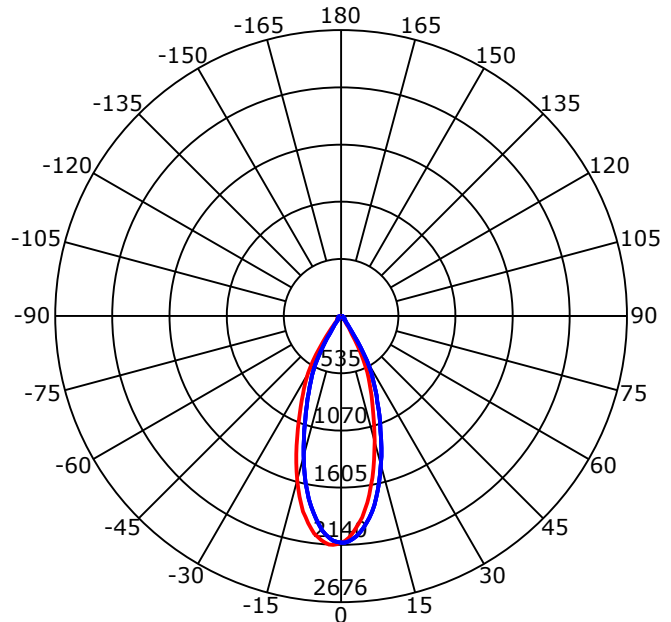
CIE Class: Direct
 Luminaire Luminous Flux: 1097.85 lm
 Downward Ratio: 100.00%
 Luminaire Efficacy Rating(LER): 102.13 lm/W
 Beam Angle(50%) C0-180,C90-270: 38.6,38.8
 Field Angle(10%) C0-180,C90-270: 67.1,66.9
 S/MH C0-180,C90-270: 0.650,0.650

Max. Intensity: 2140.44 cd
 Max.Intensity Angle: C=180 Gamma=2
 Upward Ratio: 0.00%
 Efficacy: 100.00%
 Center Intensity: 2119.48 cd
 Effective Luminous Flux: 968.11 lm
 ERP(φ use)(120deg): 1075.45 lm

Picture of Luminaire



Luminous Intensity Distribution Curve



Beam Angle(50%) C0-180,C90-270: 38.6 deg,38.8 deg

C0-180 — C90-270

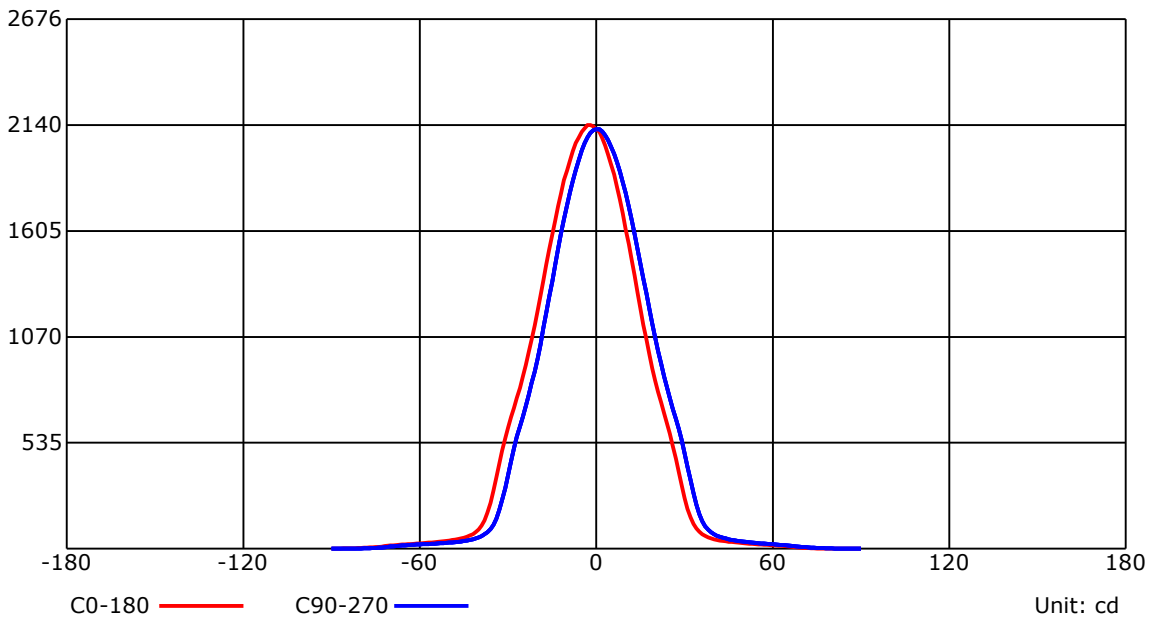
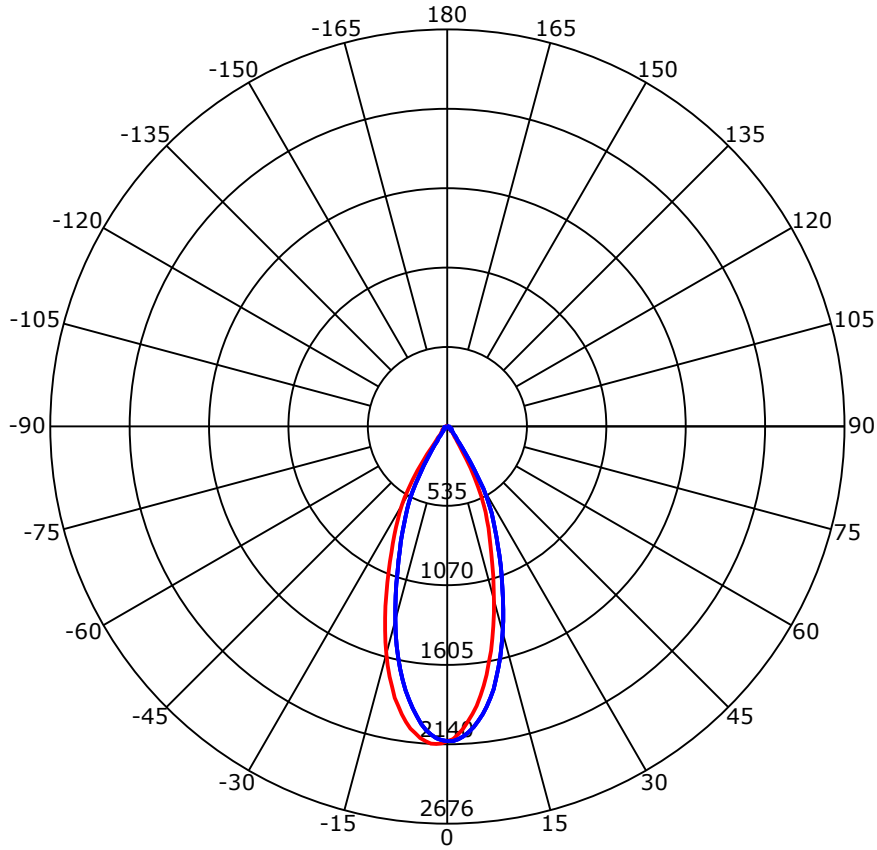
C Range: 0 - 360 Deg
 C Interval: 45.0 Deg
 Test Speed: High
 Temperature: 25
 Operators: QC01
 Test Date: 2024/10/27 14:32:23

G Range: 0 - 90 Deg
 G Interval: 1.0 Deg
 Test System: Huipu CPM-1600B Goniophotometer
 Humidity: 60
 Test Distance: 6.81 m
 Remarks:

Report No.:

Test Time: 2024/10/27 14:32:23

Luminous Intensity Distribution Curve



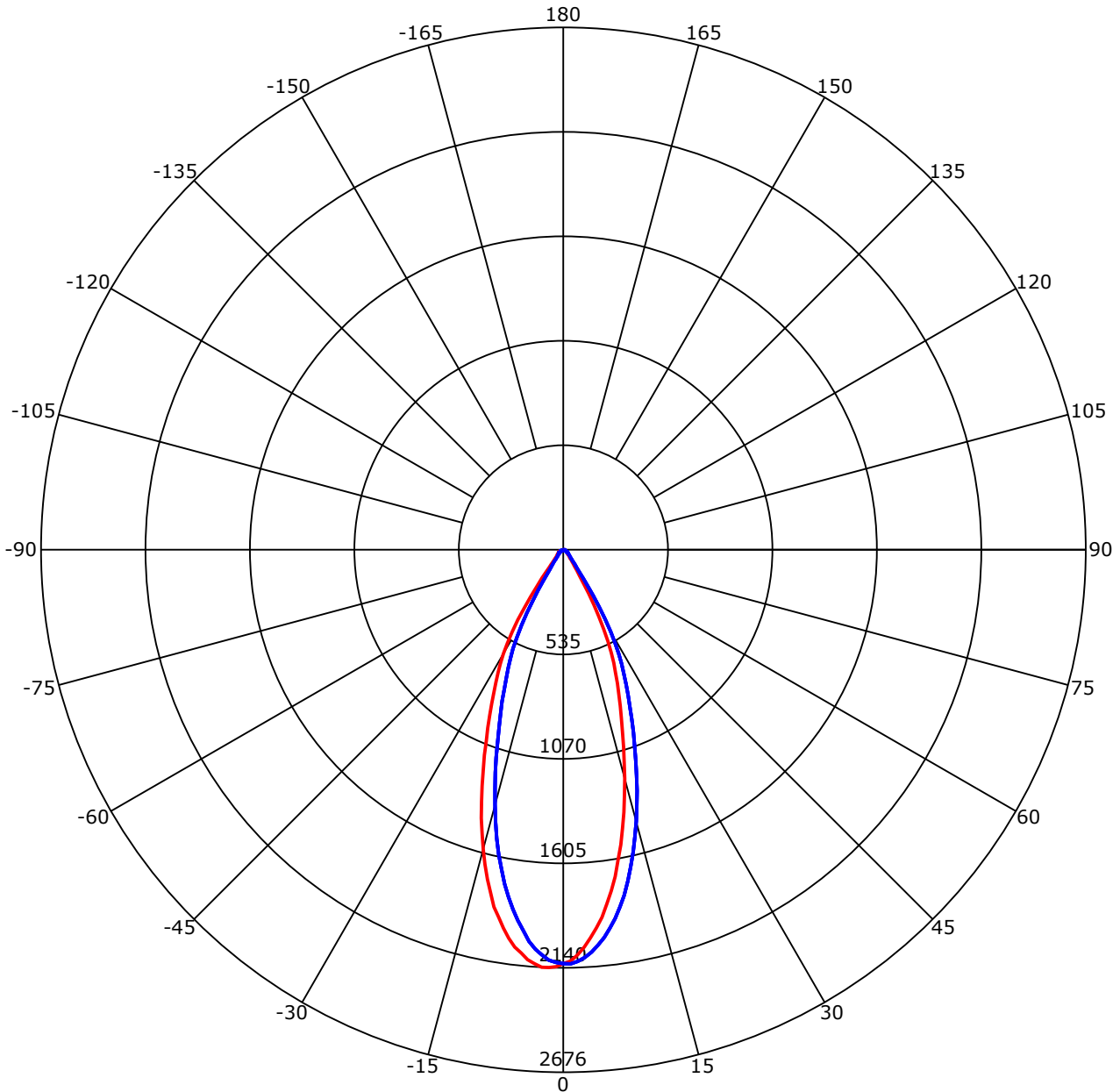
C Range: 0 - 360 Deg
 C Interval: 45.0 Deg
 Test Speed: High
 Temperature: 25
 Operators: QC01
 Test Date: 2024/10/27 14:32:23

G Range: 0 - 90 Deg
 G Interval: 1.0 Deg
 Test System: Huipu CPM-1600B Goniophotometer
 Humidity: 60
 Test Distance: 6.81 m
 Remarks:

Report No.:

Test Time: 2024/10/27 14:32:23

Luminous Intensity Distribution Curve



C0-180 — C90-270 —
 Unit: cd/klm

C Range: 0 - 360 Deg
 C Interval: 45.0 Deg
 Test Speed: High
 Temperature: 25
 Operators: QC01
 Test Date: 2024/10/27 14:32:23

G Range: 0 - 90 Deg
 G Interval: 1.0 Deg
 Test System: Huipu CPM-1600B Goniophotometer
 Humidity: 60
 Test Distance: 6.81 m
 Remarks:

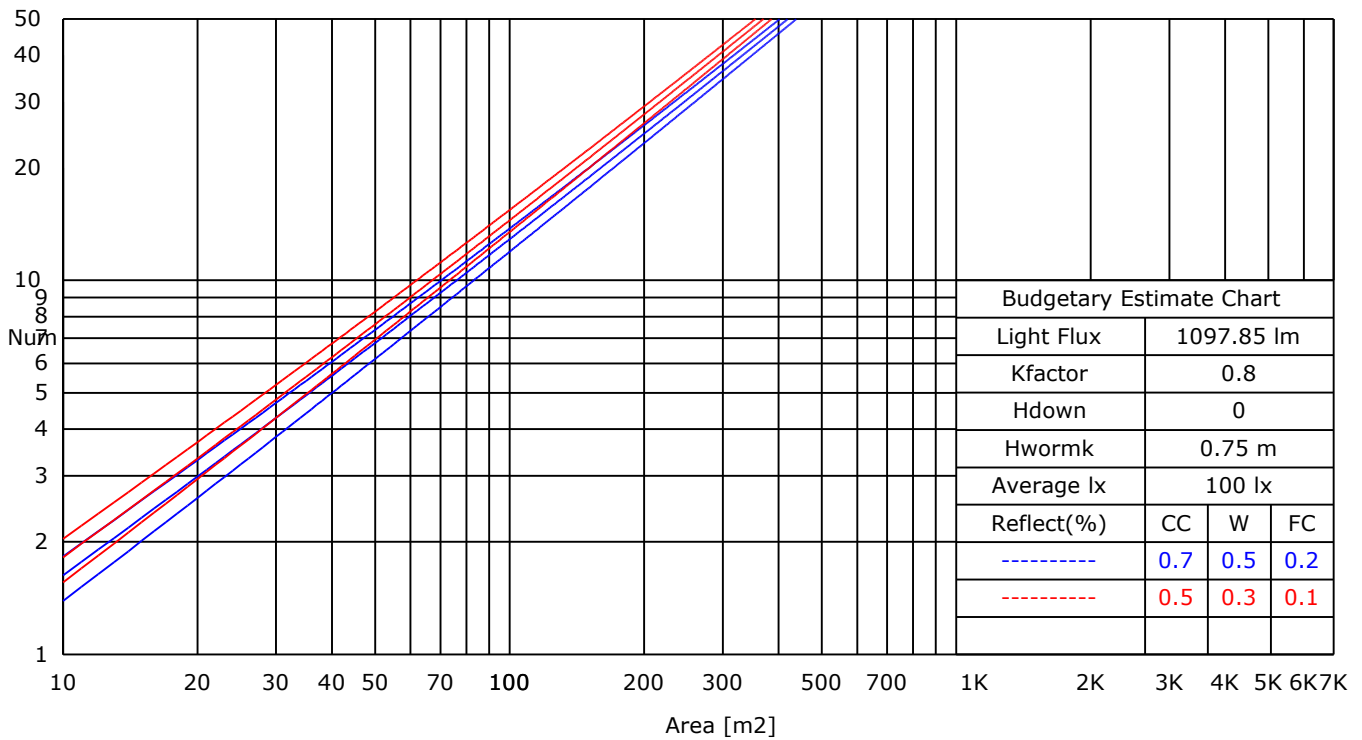
Report No.:

Test Time: 2024/10/27 14:32:23

UTILIZATION FACTORS TABLE

RHOCC	80			70			50			30			10			0
RHOW	50	30	10	50	30	10	50	30	10	50	30	10	50	30	10	0
RCR	COEFFICIENTS OF UTILIZATION FOR RHOFC=20															
0	1.19	1.19	1.19	1.16	1.16	1.16	1.11	1.11	1.11	1.06	1.06	1.06	1.02	1.02	1.02	1.00
1	1.01	0.99	0.97	1.00	0.97	0.95	0.96	0.94	0.91	0.92	0.89	0.87	0.86	0.83	0.80	0.75
2	0.96	0.94	0.93	0.95	0.93	0.91	0.93	0.90	0.87	0.89	0.85	0.83	0.83	0.80	0.77	0.73
3	0.93	0.91	0.89	0.92	0.89	0.88	0.89	0.86	0.84	0.86	0.82	0.79	0.81	0.78	0.74	0.70
4	0.89	0.88	0.86	0.88	0.86	0.84	0.86	0.83	0.81	0.83	0.79	0.76	0.79	0.75	0.72	0.68
5	0.86	0.85	0.84	0.85	0.83	0.82	0.83	0.80	0.78	0.80	0.77	0.74	0.77	0.73	0.70	0.66
6	0.84	0.82	0.81	0.83	0.81	0.79	0.81	0.78	0.76	0.78	0.74	0.72	0.75	0.71	0.67	0.64
7	0.81	0.80	0.79	0.80	0.78	0.77	0.78	0.75	0.73	0.76	0.72	0.70	0.73	0.69	0.66	0.62
8	0.79	0.78	0.77	0.78	0.76	0.75	0.76	0.73	0.71	0.74	0.70	0.68	0.71	0.67	0.64	0.60
9	0.77	0.76	0.75	0.76	0.74	0.73	0.74	0.71	0.70	0.72	0.68	0.66	0.69	0.65	0.62	0.59
10	0.75	0.74	0.73	0.74	0.72	0.71	0.72	0.70	0.68	0.70	0.67	0.64	0.68	0.64	0.61	0.58

LUMINAIRE BUDGETARY ESTIMATE DIAGRAM



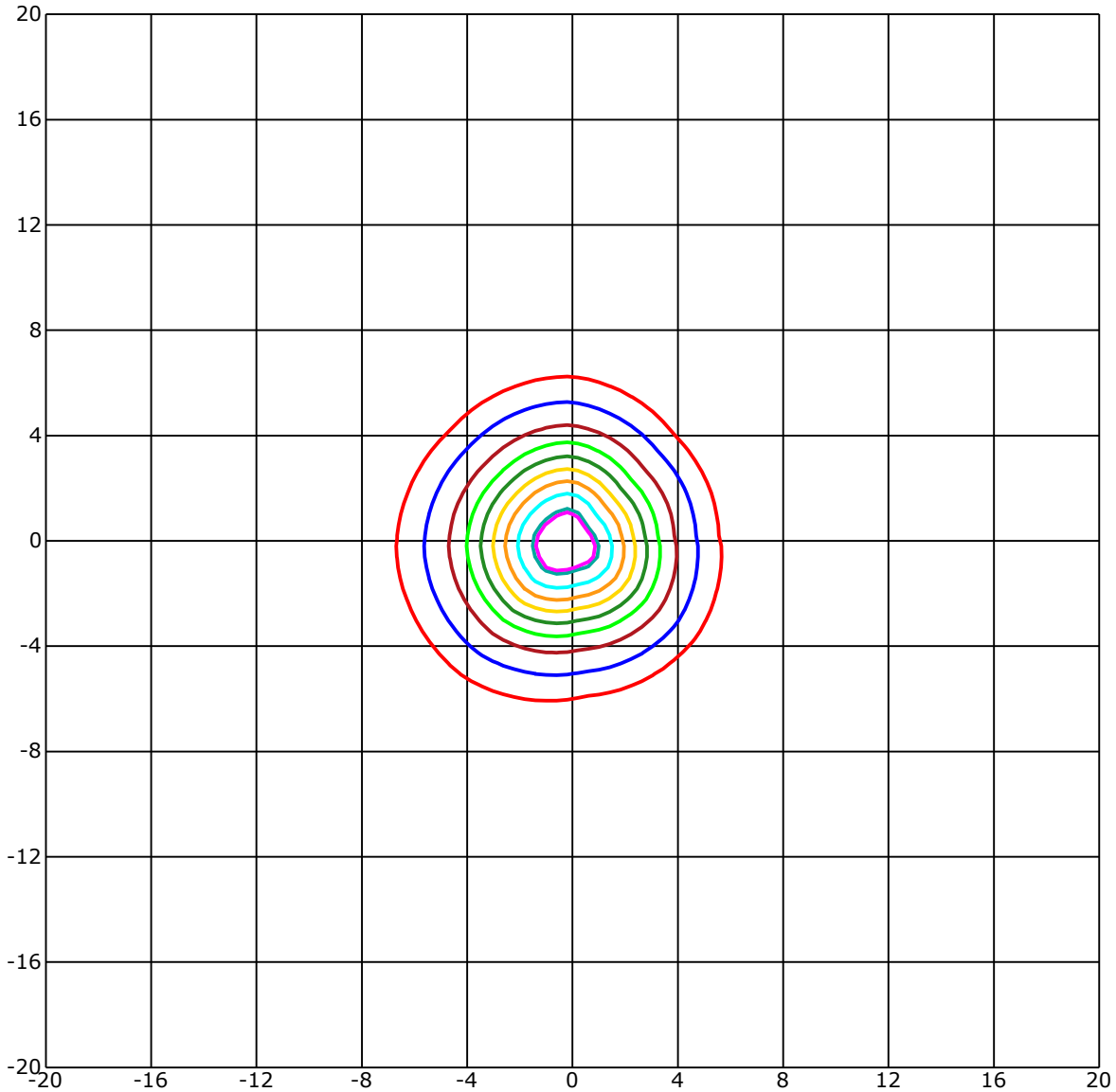
C Range: 0 - 360 Deg
 C Interval: 45.0 Deg
 Test Speed: High
 Temperature: 25
 Operators: QC01
 Test Date: 2024/10/27 14:32:23

G Range: 0 - 90 Deg
 G Interval: 1.0 Deg
 Test System: Huipu CPM-1600B Goniophotometer
 Humidity: 60
 Test Distance: 6.81 m
 Remarks:

Report No.:

Test Time: 2024/10/27 14:32:23

ISOLX DIAGRAM



Unit of illumination:lx Height of plane:10.0(m)/32.81(ft)

— 19.656(92%Emax)	— 10.683(50%Emax)
— 19.229(90%Emax)	— 8.546(40%Emax)
— 17.092(80%Emax)	— 6.41(30%Emax)
— 14.956(70%Emax)	— 4.273(20%Emax)
— 12.819(60%Emax)	— 2.137(10%Emax)

C Range: 0 - 360 Deg
 C Interval: 45.0 Deg
 Test Speed: High
 Temperature: 25
 Operators: QC01
 Test Date: 2024/10/27 14:32:23

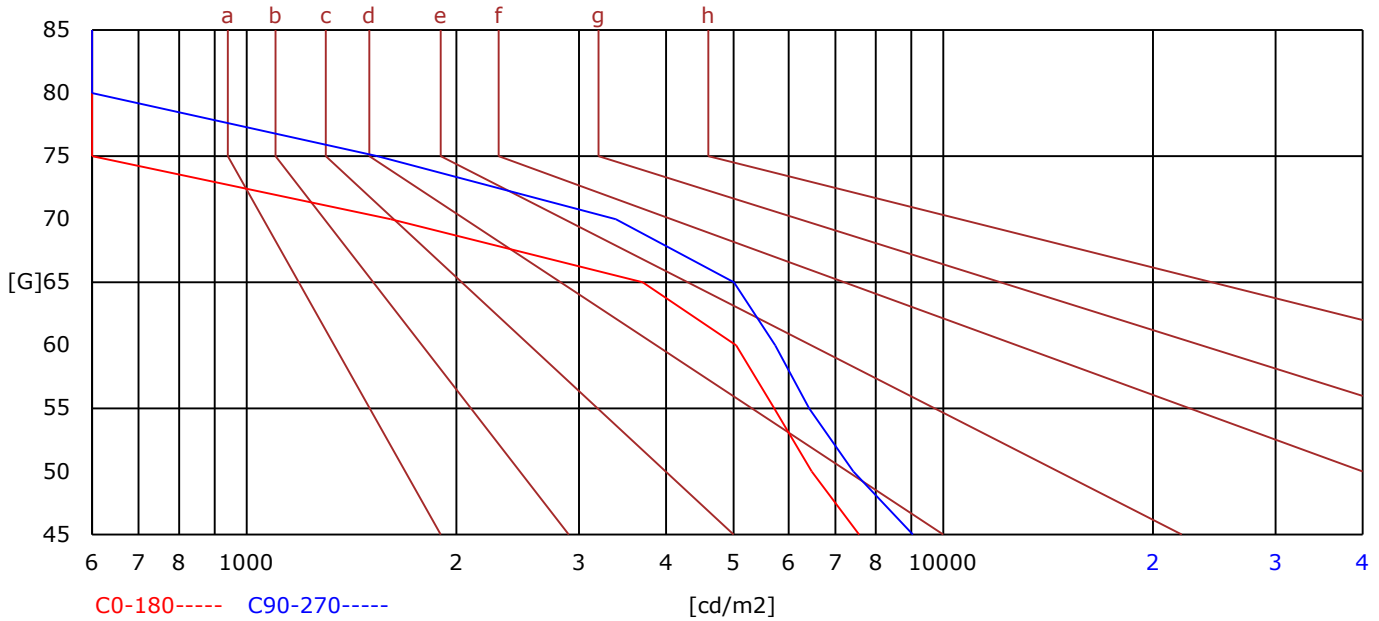
G Range: 0 - 90 Deg
 G Interval: 1.0 Deg
 Test System: Huipu CPM-1600B Goniophotometer
 Humidity: 60
 Test Distance: 6.81 m
 Remarks:

Report No.:

Test Time: 2024/10/27 14:32:23

BRIGHT LIMIT DIAGRAM

C/G	45	50	55	60	65	70	75	80	85
C0	7573	6471	5723	5043	3704	1610	252	0	0
C90	9049	7429	6418	5739	5007	3390	1540	0	0
Dazzle	Quality	Illuminance	---	---	---	---	---	---	---
1.15	A	2000	1000	500	<=300				
1.5	B		2000	1000	500	<=300			
1.85	C			2000	1000	500	<=300		
2.2	D				2000	1000	500	<=300	
2.55	E					2000	1000	500	<=300
---	---	a	b	c	d	e	f	g	h



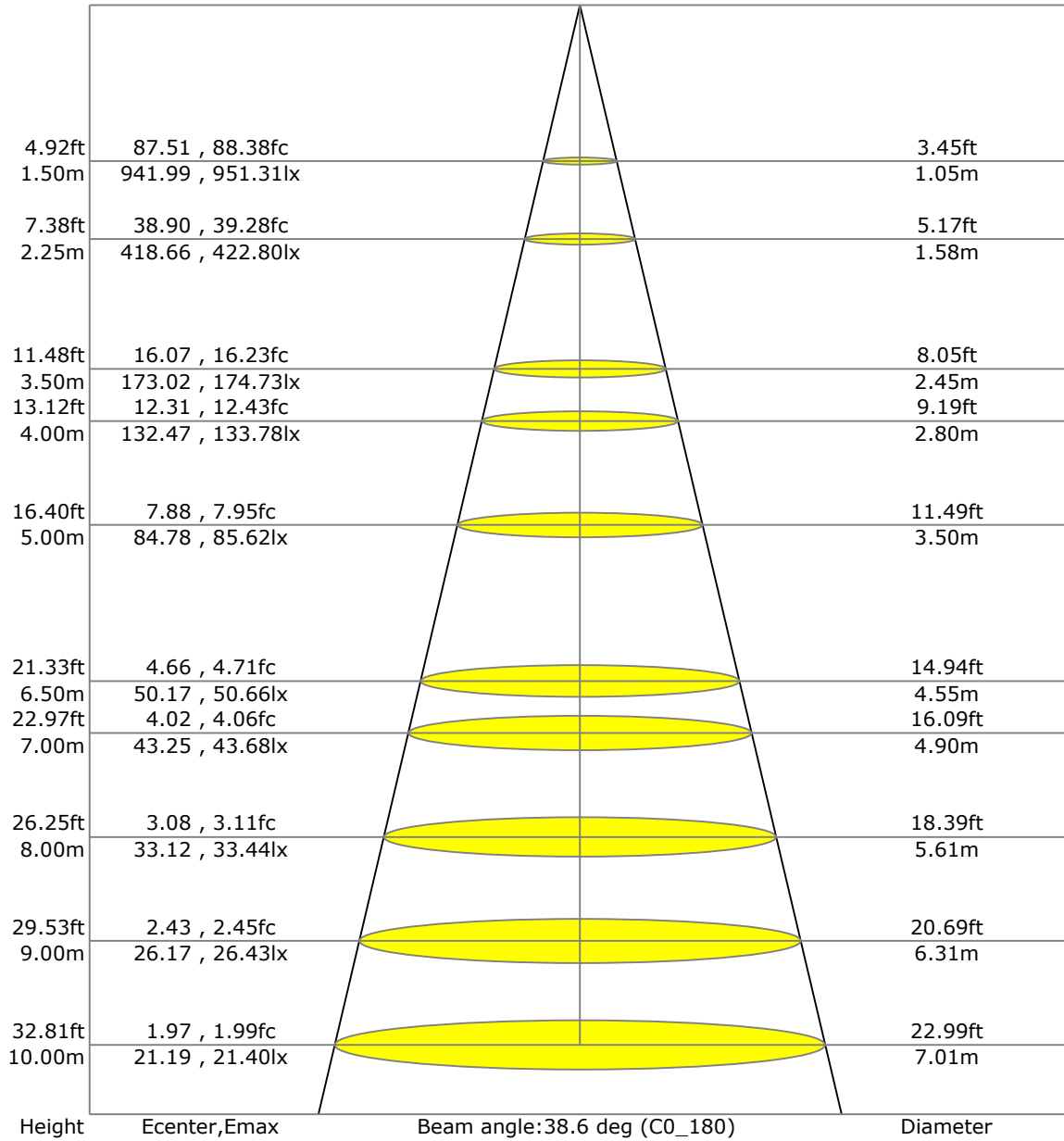
C Range: 0 - 360 Deg
 C Interval: 45.0 Deg
 Test Speed: High
 Temperature: 25
 Operators: QC01
 Test Date: 2024/10/27 14:32:23

G Range: 0 - 90 Deg
 G Interval: 1.0 Deg
 Test System: Huipu CPM-1600B Goniophotometer
 Humidity: 60
 Test Distance: 6.81 m
 Remarks:

Report No.:

Test Time: 2024/10/27 14:32:23

LX-DISTANCE DIAGRAM



C Range: 0 - 360 Deg
 C Interval: 45.0 Deg
 Test Speed: High
 Temperature: 25
 Operators: QC01
 Test Date: 2024/10/27 14:32:23

G Range: 0 - 90 Deg
 G Interval: 1.0 Deg
 Test System: Huipu CPM-1600B Goniophotometer
 Humidity: 60
 Test Distance: 6.81 m
 Remarks:

Report No.:

Test Time: 2024/10/27 14:32:23

UGR(Unified Glare Rating) TABLE

RHOCC	70	70	50	50	30	70	70	50	50	30
RHOW	50	30	50	30	30	50	30	50	30	30
RHOF	20	20	20	20	20	20	20	20	20	20
Room Size X	Viewed Endwise					Viewed Crosswise				
2H 2H	8.22	8.27	8.42	8.46	8.70	8.59	8.64	8.79	8.83	9.07
3H	8.25	8.30	8.46	8.49	8.74	8.60	8.65	8.80	8.84	9.09
4H	8.24	8.29	8.45	8.49	8.74	8.58	8.63	8.79	8.83	9.08
6H	8.22	8.28	8.44	8.48	8.73	8.56	8.62	8.78	8.82	9.07
8H	8.21	8.27	8.43	8.47	8.72	8.56	8.61	8.77	8.81	9.07
12H	8.20	8.26	8.43	8.46	8.72	8.55	8.60	8.77	8.81	9.06
4H 2H	8.73	8.78	8.94	8.98	9.23	9.44	9.49	9.65	9.69	9.94
3H	8.75	8.81	8.97	9.01	9.27	9.44	9.49	9.66	9.70	9.95
4H	8.74	8.79	8.97	9.00	9.26	9.42	9.47	9.65	9.69	9.94
6H	8.72	8.77	8.95	8.99	9.25	9.40	9.45	9.64	9.67	9.93
8H	8.70	8.75	8.95	8.98	9.25	9.39	9.44	9.63	9.66	9.93
12H	8.69	8.74	8.94	8.97	9.24	9.37	9.42	9.62	9.65	9.92
8H 4H	8.70	8.76	8.92	8.96	9.21	9.46	9.51	9.68	9.71	9.97
6H	8.68	8.72	8.93	8.96	9.23	9.41	9.46	9.66	9.69	9.97
8H	8.66	8.71	8.92	8.95	9.23	9.39	9.44	9.65	9.68	9.96
12H	8.64	8.69	8.91	8.94	9.22	9.38	9.42	9.64	9.67	9.95
12H 4H	8.69	8.74	8.94	8.97	9.24	9.43	9.48	9.68	9.71	9.98
6H	8.66	8.71	8.92	8.95	9.23	9.40	9.44	9.66	9.69	9.97

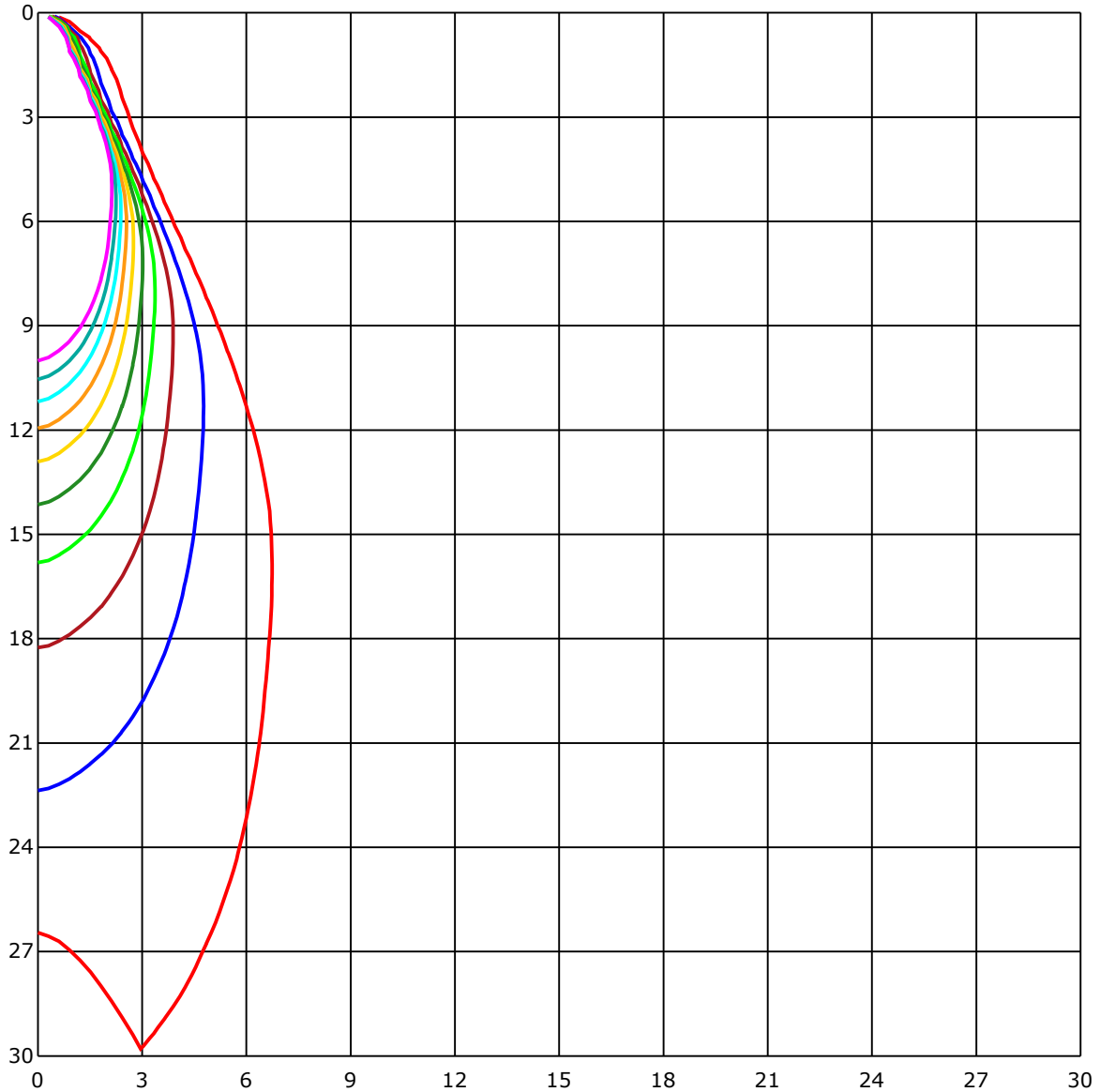
C Range: 0 - 360 Deg
 C Interval: 45.0 Deg
 Test Speed: High
 Temperature: 25
 Operators: QC01
 Test Date: 2024/10/27 14:32:23

G Range: 0 - 90 Deg
 G Interval: 1.0 Deg
 Test System: Huipu CPM-1600B Goniophotometer
 Humidity: 60
 Test Distance: 6.81 m
 Remarks:

Report No.:

Test Time: 2024/10/27 14:32:23

SPACE ISOLX DIAGRAM



Unit of illumination:lx

- | | |
|---|---|
| — 21.192 | — 10.596 |
| — 19.072 | — 8.477 |
| — 16.953 | — 6.357 |
| — 14.834 | — 4.238 |
| — 12.715 | — 2.119 |

C Range: 0 - 360 Deg
 C Interval: 45.0 Deg
 Test Speed: High
 Temperature: 25
 Operators: QC01
 Test Date: 2024/10/27 14:32:23

G Range: 0 - 90 Deg
 G Interval: 1.0 Deg
 Test System: Huipu CPM-1600B Goniophotometer
 Humidity: 60
 Test Distance: 6.81 m
 Remarks:

Report No.:

Test Time: 2024/10/27 14:32:23

LUMINOUS DISTRIBUTION INTENSITY DATA

Gamma\C	C0	C45	C90	C135	C180	C225	C270	C315	C360	
G0	2119.48	2095.69	2119.11	2129.5	2119.48	2095.69	2119.11	2129.5	2119.48	
G1	2105.99	2073.89	2120.13	2124.81	2134.88	2117.02	2114.05	2122.4	2105.99	
G2	2075.01	2039.39	2108.07	2119.9	2140.44	2121.89	2102.37	2109.05	2075.01	
G3	2037.3	1997.74	2089.48	2105.52	2139.98	2124.26	2079.18	2085.39	2037.3	
G4	1990.93	1950.21	2064.66	2079.13	2123.98	2116.28	2050.33	2057.2	1990.93	
G5	1943.67	1898.04	2031.46	2051.49	2106.73	2109.28	2012.58	2017.73	1943.67	
G6	1891.91	1834.87	1995.29	2012.72	2076.21	2079.46	1961.57	1975.95	1891.91	
G7	1827.31	1775.23	1952.2	1965.28	2049.73	2047.88	1911.95	1929.2	1827.31	
G8	1763.59	1707.2	1906.43	1923.87	2009.34	2014.39	1858.94	1872.53	1763.59	
G9	1693.75	1639.12	1851.43	1871.46	1961.71	1972.47	1800.23	1811.68	1693.75	
G10	1613.7	1571.04	1796.84	1818.64	1910.32	1920.81	1736.83	1744.34	1613.7	
G11	1539.55	1491.59	1727.14	1750.1	1862.23	1862.65	1664.07	1673.34	1539.55	
G12	1458.39	1411.5	1659.94	1683.68	1794.15	1802.64	1594.18	1602.99	1458.39	
G13	1379.64	1332.43	1589.17	1614.54	1731.41	1738.69	1515.62	1528.97	1379.64	
G14	1294.26	1253.08	1515.06	1538.76	1659.11	1664.62	1436.04	1453.66	1294.26	
G15	1213.99	1181.94	1440.77	1461.45	1588.34	1592.23	1351.91	1374.31	1213.99	
G16	1131.58	1107.83	1366.05	1385.07	1512.0	1515.39	1271.4	1293.52	1131.58	
G17	1057.28	1037.71	1288.89	1306.55	1436.59	1438.17	1191.91	1214.22	1057.28	
G18	981.69	968.94	1212.74	1231.33	1355.25	1355.11	1116.27	1136.96	981.69	
G19	911.85	900.48	1137.28	1150.78	1278.91	1273.16	1030.99	1060.3	911.85	
G20	849.93	838.16	1067.44	1076.11	1202.12	1193.21	959.24	986.74	849.93	
G21	793.4	782.74	1000.1	1005.57	1127.4	1112.8	895.11	923.81	793.4	
G22	737.52	734.09	934.06	941.25	1055.06	1039.29	837.04	862.46	737.52	
G23	683.95	682.19	870.53	878.92	991.57	970.93	775.18	799.57	683.95	
G24	633.08	630.39	815.11	820.39	927.43	907.21	720.92	745.59	633.08	
G25	581.23	579.28	760.06	767.39	870.25	848.5	667.03	689.06	581.23	
G26	520.29	522.75	707.61	716.7	812.69	794.47	619.03	639.29	520.29	
G27	455.27	459.4	656.08	666.19	761.87	743.78	567.13	584.99	455.27	
G28	387.84	393.13	605.12	616.38	711.32	693.28	507.31	524.47	387.84	
G29	320.97	325.98	548.68	558.0	666.01	643.05	442.57	456.9	320.97	
G30	256.74	263.46	483.29	494.0	613.79	591.39	374.39	387.47	256.74	
G31	200.81	207.58	413.86	424.62	557.95	532.54	306.18	317.72	200.81	
G32	156.89	160.79	345.41	355.43	496.13	467.1	245.56	253.96	156.89	
G33	124.98	126.0	280.3	288.04	427.73	400.04	193.99	200.67	124.98	
G34	101.89	103.0	222.7	227.24	359.14	332.47	151.33	158.88	101.89	
G35	85.84	86.54	175.44	176.09	292.59	270.56	119.84	128.14	85.84	
G36	73.51	73.97	138.85	137.09	231.97	214.95	99.2	107.69	73.51	

C Range: 0 - 360 Deg
 C Interval: 45.0 Deg
 Test Speed: High
 Temperature: 25
 Operators: QC01
 Test Date: 2024/10/27 14:32:23

G Range: 0 - 90 Deg
 G Interval: 1.0 Deg
 Test System: Huipu CPM-1600B Goniophotometer
 Humidity: 60
 Test Distance: 6.81 m
 Remarks:

Report No.:

Test Time: 2024/10/27 14:32:23

LUMINOUS DISTRIBUTION INTENSITY DATA(Continue 1)

Gamma\C	C0	C45	C90	C135	C180	C225	C270	C315	C360	
G37	64.65	64.37	114.36	108.2	181.61	171.31	83.66	92.15	64.65	
G38	57.6	57.23	96.23	88.76	142.98	138.06	72.58	80.97	57.6	
G39	52.36	52.08	82.87	74.99	116.31	115.06	63.35	72.53	52.36	
G40	47.72	47.26	73.27	65.3	97.39	97.48	56.81	66.09	47.72	
G41	44.29	43.96	65.85	57.69	83.99	84.27	51.48	60.52	44.29	
G42	41.37	41.0	60.06	52.17	73.65	74.16	47.16	56.3	41.37	
G43	38.96	38.49	55.6	47.35	66.04	66.5	43.64	52.54	38.96	
G44	36.87	36.22	51.57	44.1	60.2	60.1	40.9	49.53	36.87	
G45	35.06	34.27	47.67	40.95	55.47	55.74	38.77	46.52	35.06	
G46	33.62	32.42	44.85	38.26	51.89	51.66	36.78	44.15	33.62	
G47	32.05	31.03	42.06	35.94	48.28	48.23	34.97	41.88	32.05	
G48	30.61	29.4	39.79	33.85	45.63	45.45	33.48	40.12	30.61	
G49	29.26	28.1	37.66	32.32	43.36	43.27	31.95	38.35	29.26	
G50	27.92	26.62	36.03	30.56	41.23	40.95	30.75	36.92	27.92	
G51	26.71	25.41	34.23	28.85	39.65	39.28	29.5	35.57	26.71	
G52	25.37	24.12	32.56	27.45	37.8	37.8	28.43	34.27	25.37	
G53	24.35	23.05	30.98	26.16	36.36	36.27	27.45	32.93	24.35	
G54	23.23	21.98	29.54	25.0	34.83	34.74	26.71	31.95	23.23	
G55	22.12	21.01	28.06	23.56	33.39	33.67	25.51	30.79	22.12	
G56	21.24	19.99	26.81	22.59	31.86	32.14	24.67	29.5	21.24	
G57	20.17	18.97	25.6	21.38	30.65	31.26	23.79	28.38	20.17	
G58	19.29	18.09	24.58	20.54	29.36	29.87	23.23	27.32	19.29	
G59	18.36	17.25	23.33	19.39	28.24	29.03	22.35	26.2	18.36	
G60	17.39	16.14	22.31	18.36	26.94	27.96	21.7	25.37	17.39	
G61	16.37	15.21	21.1	17.53	25.92	26.85	20.82	24.3	16.37	
G62	15.44	14.05	20.17	16.42	24.76	25.83	19.99	23.37	15.44	
G63	14.38	12.99	18.88	15.35	23.79	24.81	19.06	22.35	14.38	
G64	13.12	11.55	17.9	14.56	22.72	23.88	18.32	21.29	13.12	
G65	11.78	10.02	16.46	13.54	21.61	22.86	17.3	20.17	11.78	
G66	10.11	8.16	15.26	12.57	20.78	21.7	16.46	19.11	10.11	
G67	8.21	6.26	13.82	11.41	19.66	20.68	15.16	17.48	8.21	
G68	6.26	5.05	12.2	10.3	18.41	19.76	14.14	15.91	6.26	
G69	5.33	4.31	10.2	9.0	17.21	18.64	12.52	14.1	5.33	
G70	4.41	3.52	8.67	7.42	15.91	17.62	10.99	11.97	4.41	
G71	3.66	2.88	7.74	5.84	14.84	16.19	9.18	9.79	3.66	
G72	2.97	2.18	6.82	4.78	12.89	14.7	7.19	8.81	2.97	
G73	2.5	1.62	6.08	4.22	10.9	13.17	5.89	7.84	2.5	

C Range: 0 - 360 Deg
 C Interval: 45.0 Deg
 Test Speed: High
 Temperature: 25
 Operators: QC01
 Test Date: 2024/10/27 14:32:23

G Range: 0 - 90 Deg
 G Interval: 1.0 Deg
 Test System: Huipu CPM-1600B Goniophotometer
 Humidity: 60
 Test Distance: 6.81 m
 Remarks:

