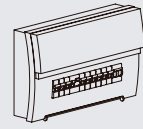


## Installation Procedure

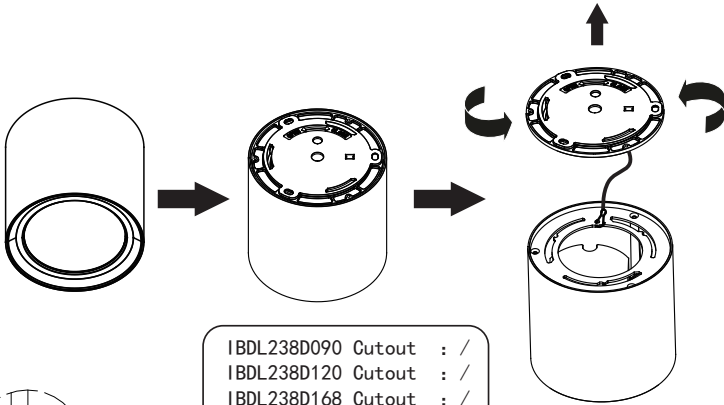
### WARNING

1. Switch off before installation.
2. Switch on only after complete installation and examination of the circuit.
3. Professional electrician for installation and maintenance only.

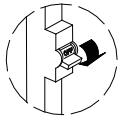


## Downlight

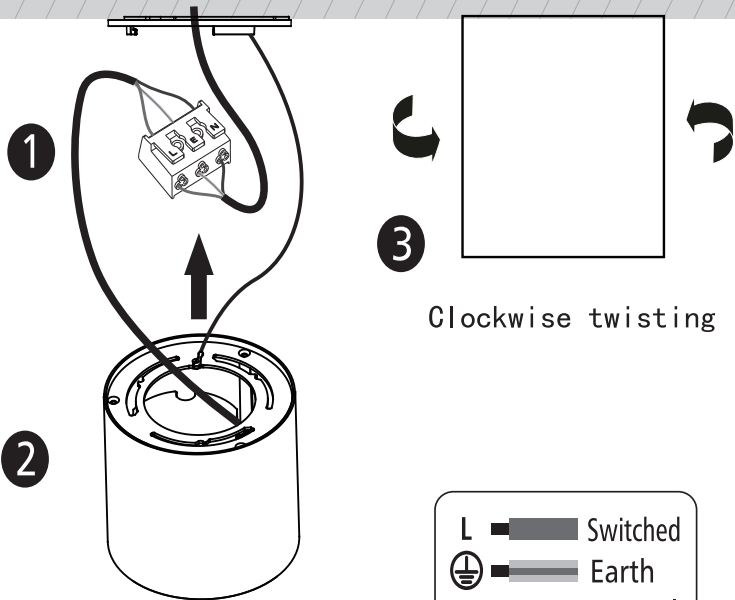
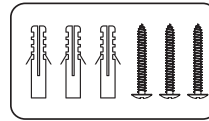
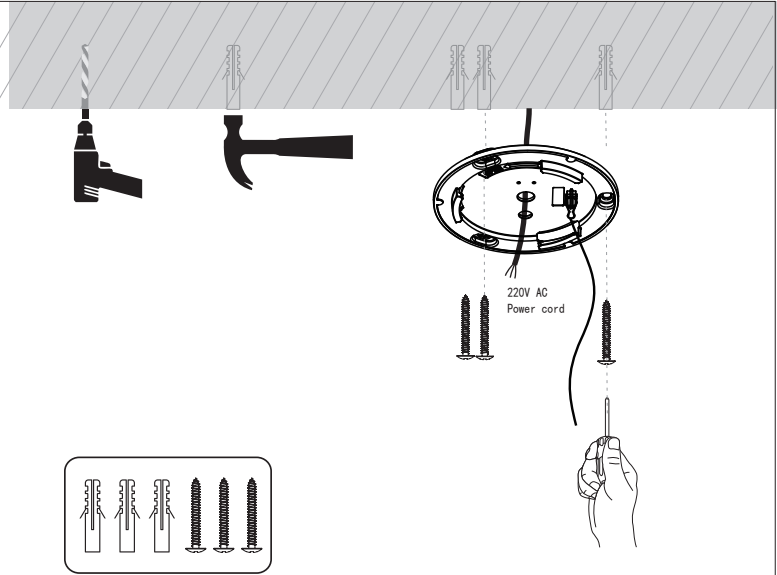
Clockwise twisting



IBDL238D090 Cutout	:	/
IBDL238D120 Cutout	:	/
IBDL238D168 Cutout	:	/
IBDL230D090 Cutout	:	/
IBDL230D120 Cutout	:	/
IBDL230D168 Cutout	:	/

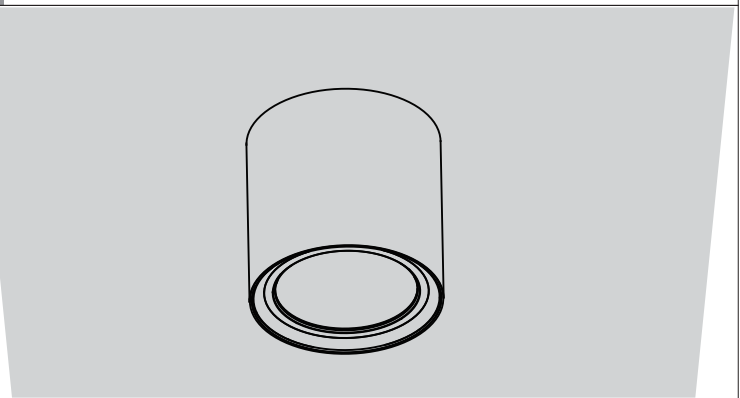


1 2

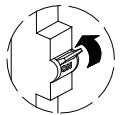


L	—	Switched
⊕	—	Earth
N	—	Neutral

3 4



COMPLETE



The light source contained in this luminaire shall only be replaced by the manufacturer or his service agent or a similar qualified person.

