

Report No.:

Test Time: 2025/1/7 18:32:23

LUMINAIRE PHOTOMETRIC TEST REPORT

Luminaire Property

Manufacturer: InBright
 Luminaire Type: IBSP110CT075H92-24°-10W
 Lamp Type:
 Luminous Width: 80 mm
 Luminous Length: 80 mm
 Luminous Height: 86 mm

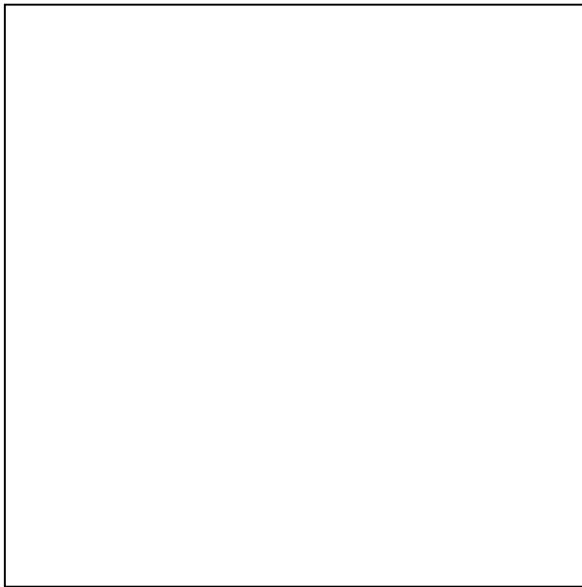
Voltage(V): 220.00 V
 Current(A): 0.0540 A
 Power(W): 10.89 W
 Power Factor: 0.9150
 Lamp Luminous Flux: 856.50

Photometric Results

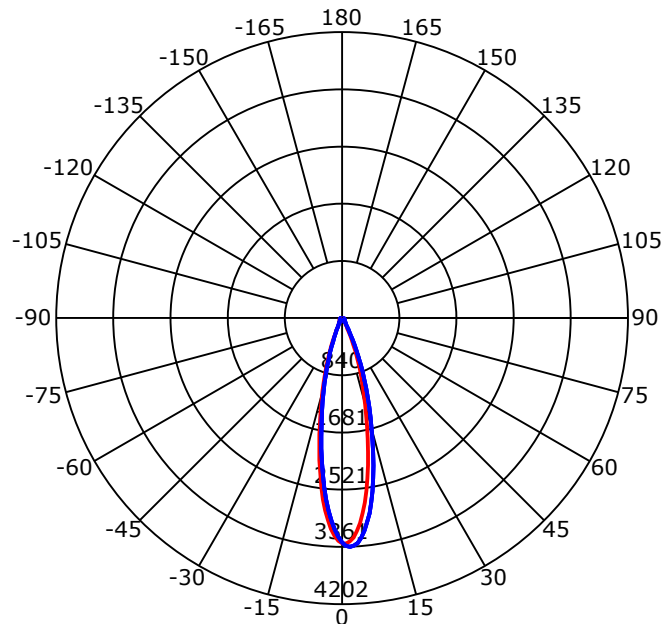
CIE Class: Direct
 Luminaire Luminous Flux: 856.5024 lm
 Downward Ratio: 100.00%
 Luminaire Efficacy Rating(LER): 78.66 lm/W
 Beam Angle(50%) C0-180,C90-270: 24.4,25.5
 Field Angle(10%) C0-180,C90-270: 46.6,47.7
 S/MH C0-180,C90-270: 0.425,0.462

Max. Intensity: 3361.30 cd
 Max.Intensity Angle: C=90 Gamma=2
 Upward Ratio: 0.00%
 Efficacy: 100.00%
 Center Intensity: 3307.33 cd
 Effective Luminous Flux: 673.37 lm
 ERP(φuse)(120deg): 837.71 lm

Picture of Luminaire



Luminous Intensity Distribution Curve



Beam Angle(50%) C0-180,C90-270: 24.4 deg,25.5 deg

C0-180 — C90-270 —

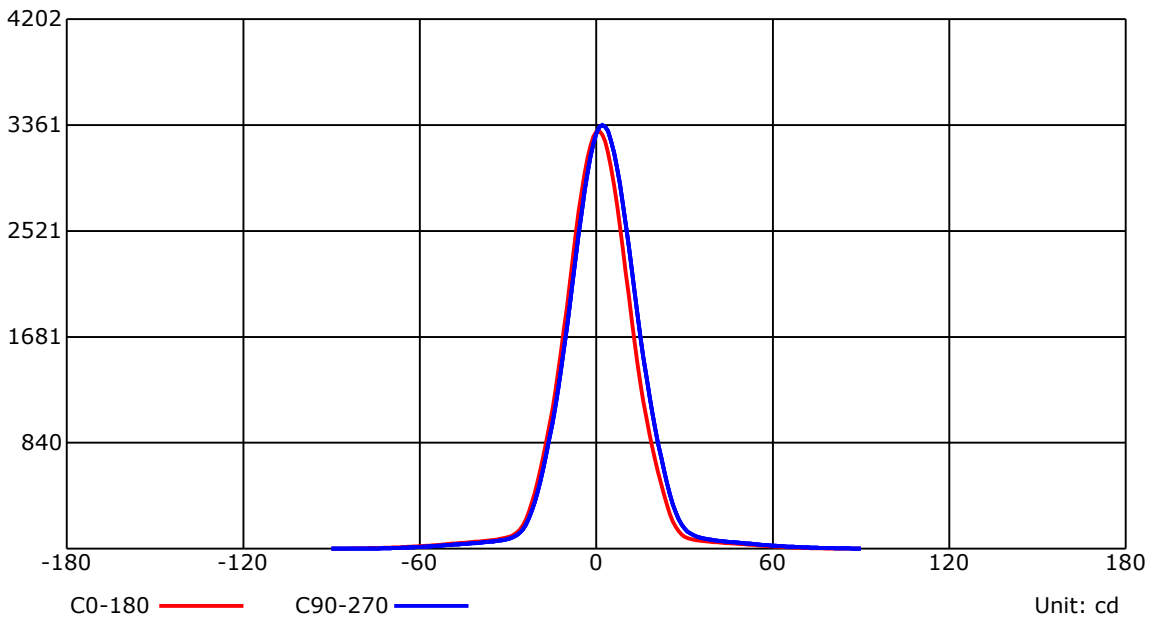
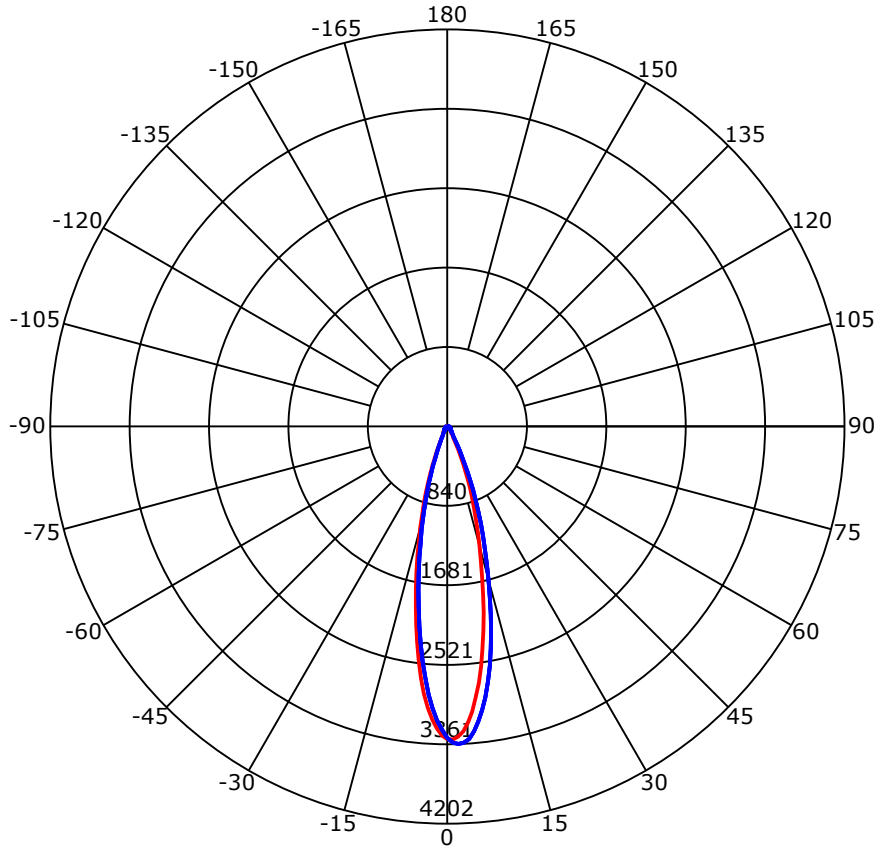
C Range: 0 - 360 Deg
 C Interval: 45.0 Deg
 Test Speed: High
 Temperature: 25
 Operators: QC01
 Test Date: 2025/1/7 18:32:23

G Range: 0 - 90 Deg
 G Interval: 1.0 Deg
 Test System: Huipu CPM-1600B Goniophotometer
 Humidity: 60
 Test Distance: 6.78 m
 Remarks:

Report No.:

Test Time: 2025/1/7 18:32:23

Luminous Intensity Distribution Curve



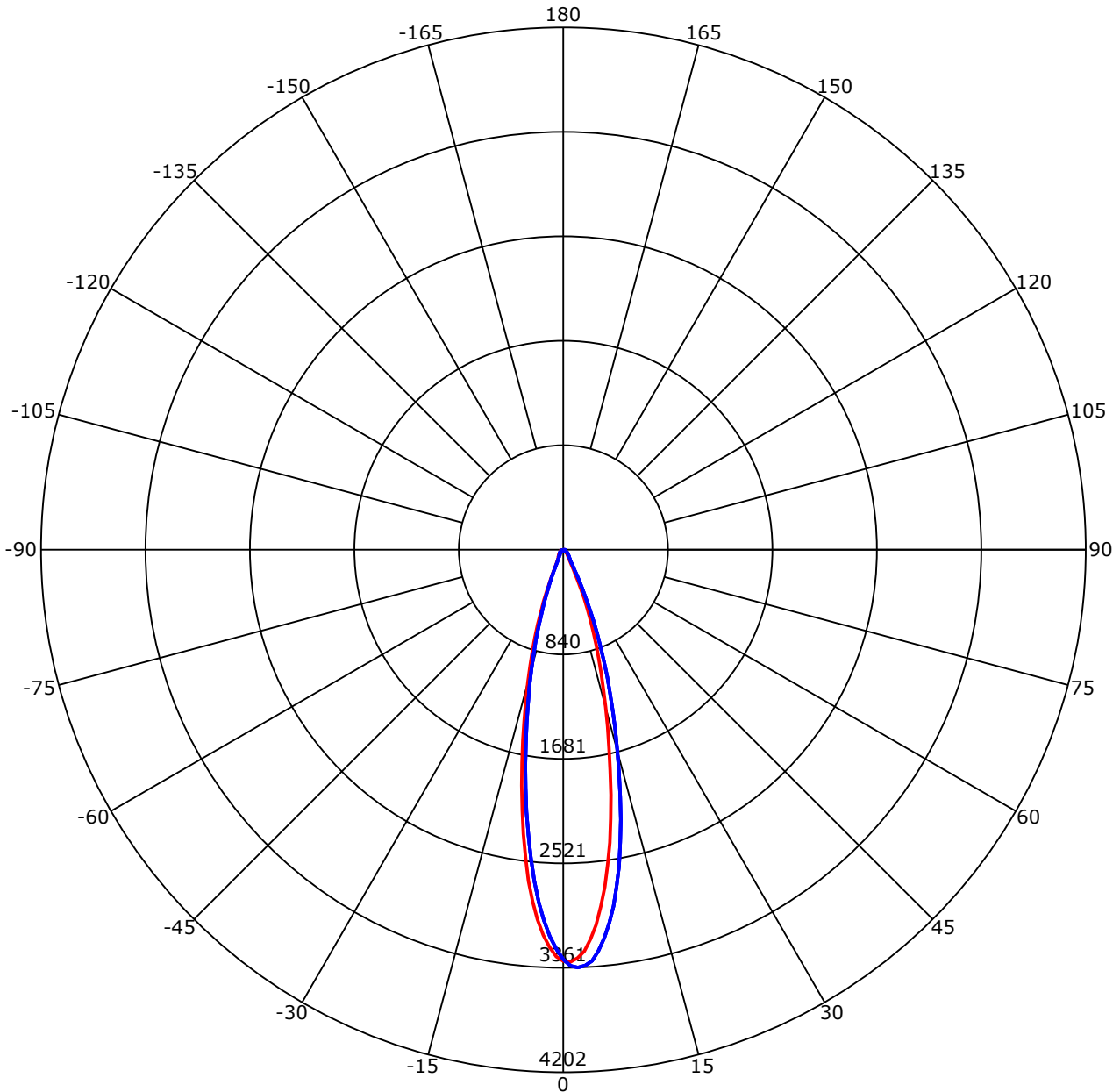
C Range: 0 - 360 Deg
 C Interval: 45.0 Deg
 Test Speed: High
 Temperature: 25
 Operators: QC01
 Test Date: 2025/1/7 18:32:23

G Range: 0 - 90 Deg
 G Interval: 1.0 Deg
 Test System: Huipu CPM-1600B Goniophotometer
 Humidity: 60
 Test Distance: 6.78 m
 Remarks:

Report No.:

Test Time: 2025/1/7 18:32:23

Luminous Intensity Distribution Curve



C0-180 — C90-270 —
 Unit: cd/klm

C Range: 0 - 360 Deg
 C Interval: 45.0 Deg
 Test Speed: High
 Temperature: 25
 Operators: QC01
 Test Date: 2025/1/7 18:32:23

G Range: 0 - 90 Deg
 G Interval: 1.0 Deg
 Test System: Huipu CPM-1600B Goniophotometer
 Humidity: 60
 Test Distance: 6.78 m
 Remarks:

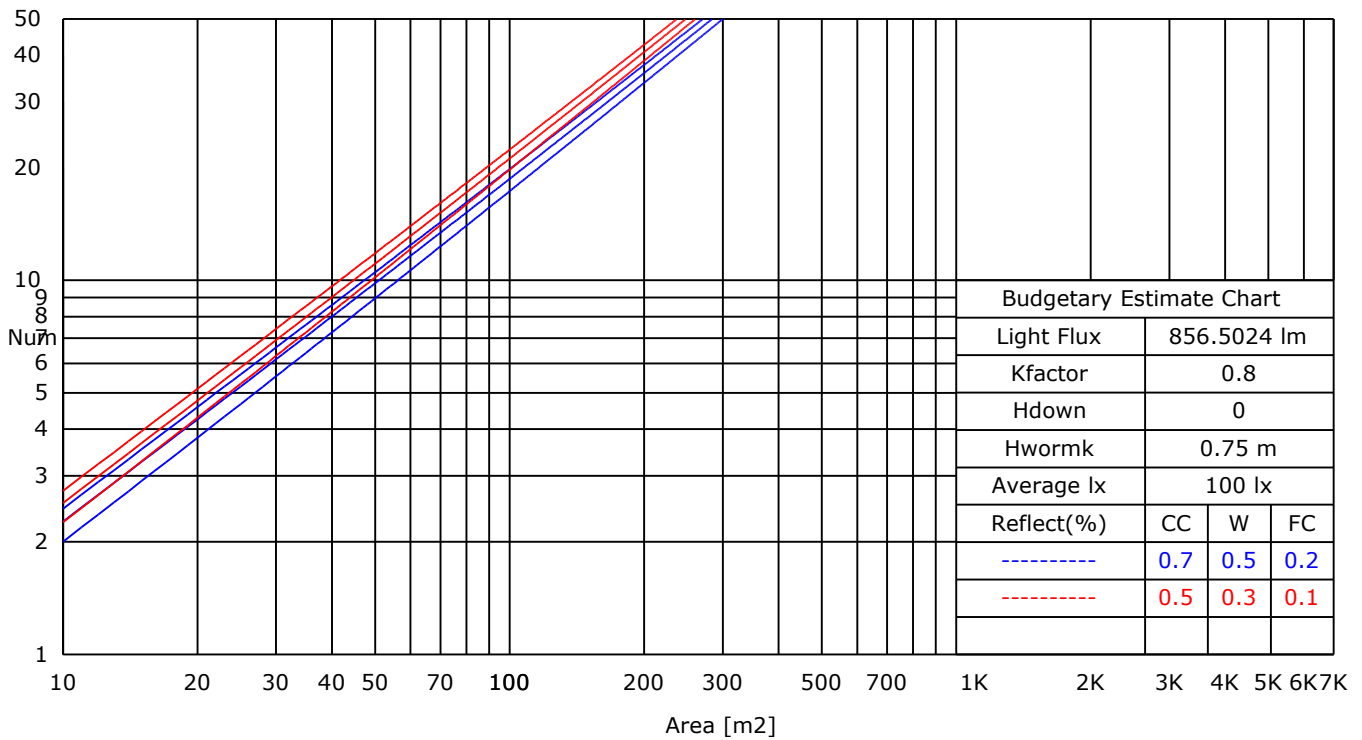
Report No.:

Test Time: 2025/1/7 18:32:23

UTILIZATION FACTORS TABLE

RHOCC	80			70			50			30			10			0
RHOW	50	30	10	50	30	10	50	30	10	50	30	10	50	30	10	0
RCR	COEFFICIENTS OF UTILIZATION FOR RHOFC=20															
0	1.19	1.19	1.19	1.16	1.16	1.16	1.11	1.11	1.11	1.06	1.06	1.06	1.02	1.02	1.02	1.00
1	0.89	0.86	0.83	0.88	0.85	0.82	0.86	0.82	0.78	0.82	0.78	0.74	0.77	0.73	0.69	0.64
2	0.85	0.82	0.80	0.84	0.81	0.78	0.82	0.78	0.75	0.79	0.75	0.71	0.75	0.71	0.67	0.62
3	0.81	0.79	0.77	0.81	0.78	0.75	0.79	0.75	0.72	0.77	0.72	0.69	0.73	0.68	0.64	0.60
4	0.78	0.76	0.75	0.78	0.75	0.73	0.77	0.73	0.70	0.74	0.70	0.66	0.71	0.66	0.62	0.58
5	0.76	0.74	0.73	0.76	0.73	0.71	0.74	0.71	0.68	0.72	0.68	0.64	0.70	0.65	0.61	0.57
6	0.74	0.72	0.71	0.74	0.71	0.69	0.72	0.69	0.66	0.70	0.66	0.63	0.68	0.63	0.59	0.56
7	0.72	0.70	0.69	0.72	0.69	0.68	0.70	0.67	0.65	0.69	0.64	0.61	0.66	0.62	0.58	0.54
8	0.71	0.69	0.68	0.70	0.68	0.66	0.69	0.65	0.63	0.67	0.63	0.60	0.65	0.60	0.57	0.53
9	0.69	0.68	0.67	0.69	0.66	0.65	0.67	0.64	0.62	0.66	0.62	0.59	0.64	0.59	0.56	0.52
10	0.68	0.66	0.66	0.67	0.65	0.64	0.66	0.63	0.61	0.64	0.61	0.58	0.63	0.58	0.55	0.52

LUMINAIRE BUDGETARY ESTIMATE DIAGRAM



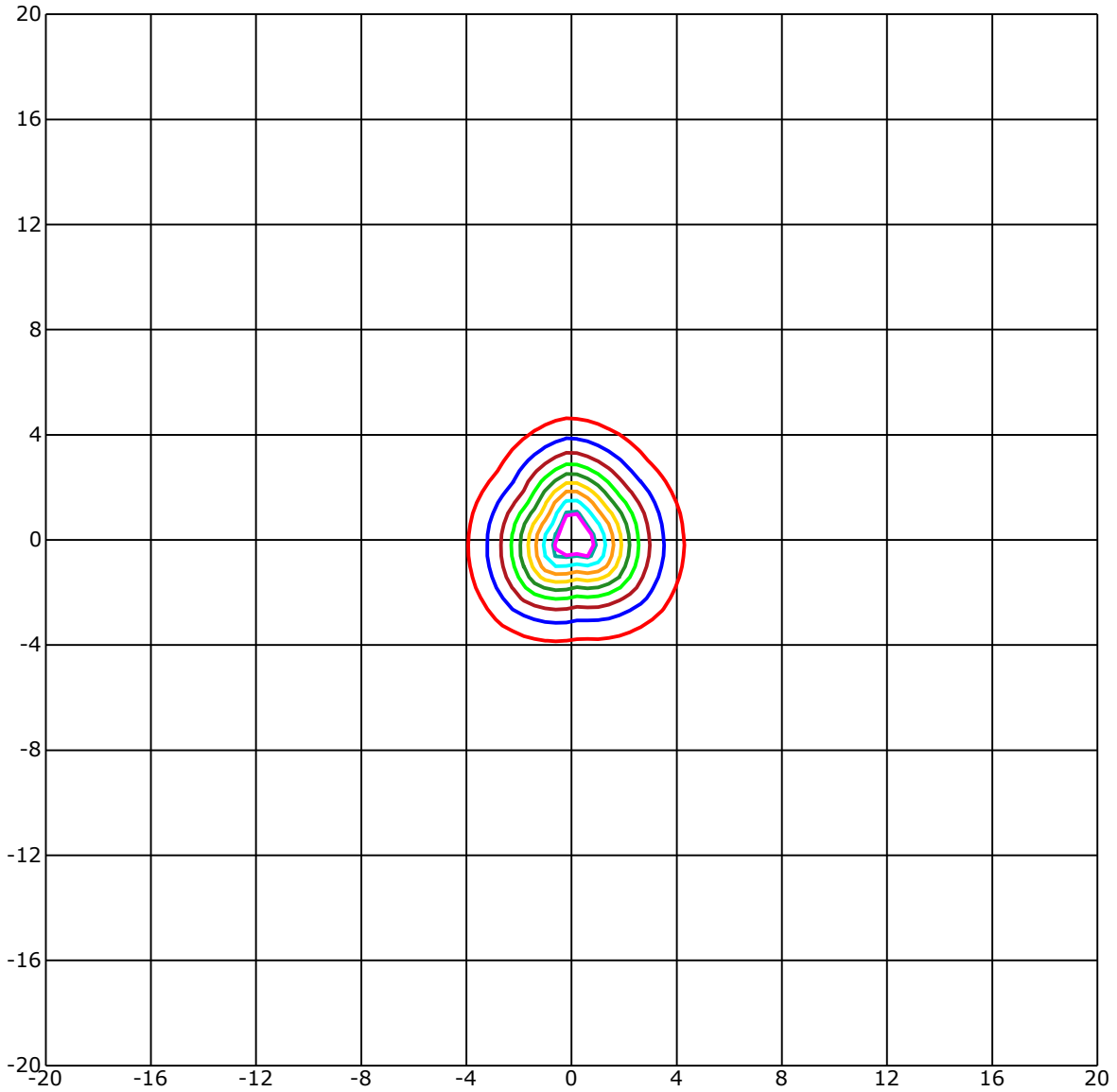
C Range: 0 - 360 Deg
 C Interval: 45.0 Deg
 Test Speed: High
 Temperature: 25
 Operators: QC01
 Test Date: 2025/1/7 18:32:23

G Range: 0 - 90 Deg
 G Interval: 1.0 Deg
 Test System: Huipu CPM-1600B Goniophotometer
 Humidity: 60
 Test Distance: 6.78 m
 Remarks:

Report No.:

Test Time: 2025/1/7 18:32:23

ISOLX DIAGRAM



Unit of illumination:lx Height of plane:10.0(m)/32.81(ft)

30.867(92%Emax)	16.776(50%Emax)
30.196(90%Emax)	13.421(40%Emax)
26.841(80%Emax)	10.065(30%Emax)
23.486(70%Emax)	6.71(20%Emax)
20.131(60%Emax)	3.355(10%Emax)

C Range: 0 - 360 Deg
 C Interval: 45.0 Deg
 Test Speed: High
 Temperature: 25
 Operators: QC01
 Test Date: 2025/1/7 18:32:23

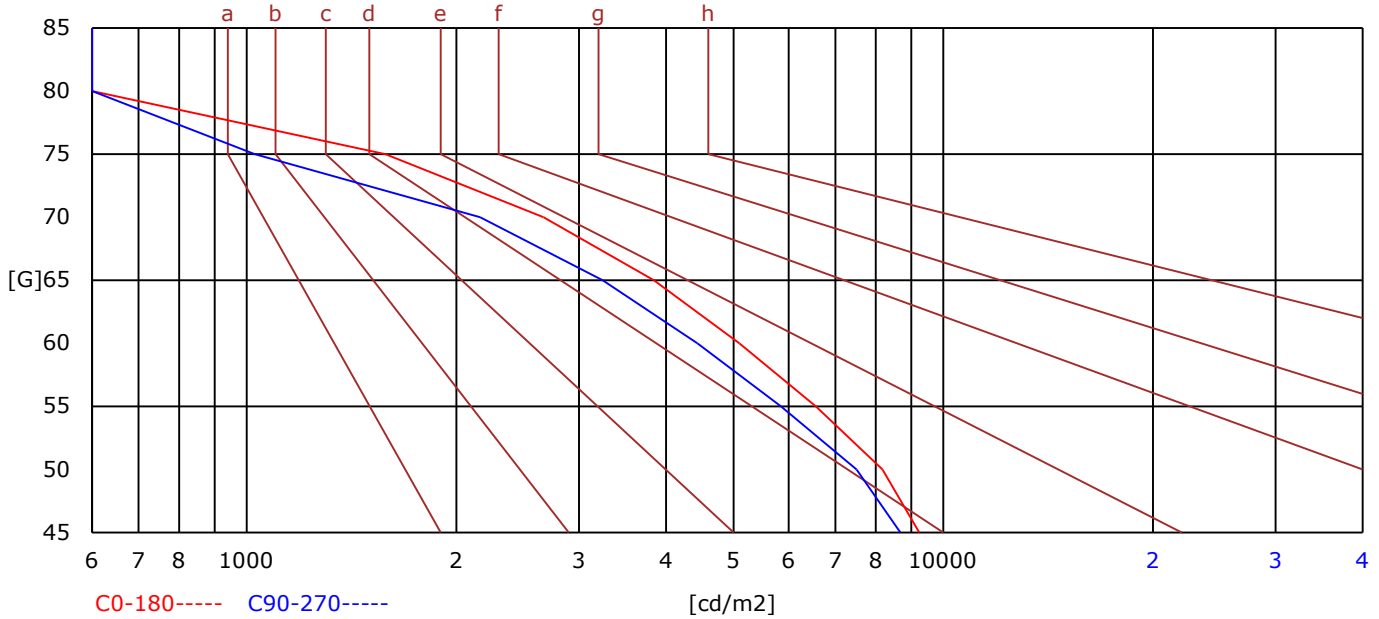
G Range: 0 - 90 Deg
 G Interval: 1.0 Deg
 Test System: Huipu CPM-1600B Goniophotometer
 Humidity: 60
 Test Distance: 6.78 m
 Remarks:

Report No.:

Test Time: 2025/1/7 18:32:23

BRIGHT LIMIT DIAGRAM

C/G	45	50	55	60	65	70	75	80	85
C0	9233	8179	6562	5100	3841	2667	1582	331	0
C90	8675	7509	5848	4439	3246	2163	1027	0	0
Dazzle	Quality	Illuminance	---	---	---	---	---	---	---
1.15	A	2000	1000	500	<=300				
1.5	B		2000	1000	500	<=300			
1.85	C			2000	1000	500	<=300		
2.2	D				2000	1000	500	<=300	
2.55	E					2000	1000	500	<=300
---	---	a	b	c	d	e	f	g	h



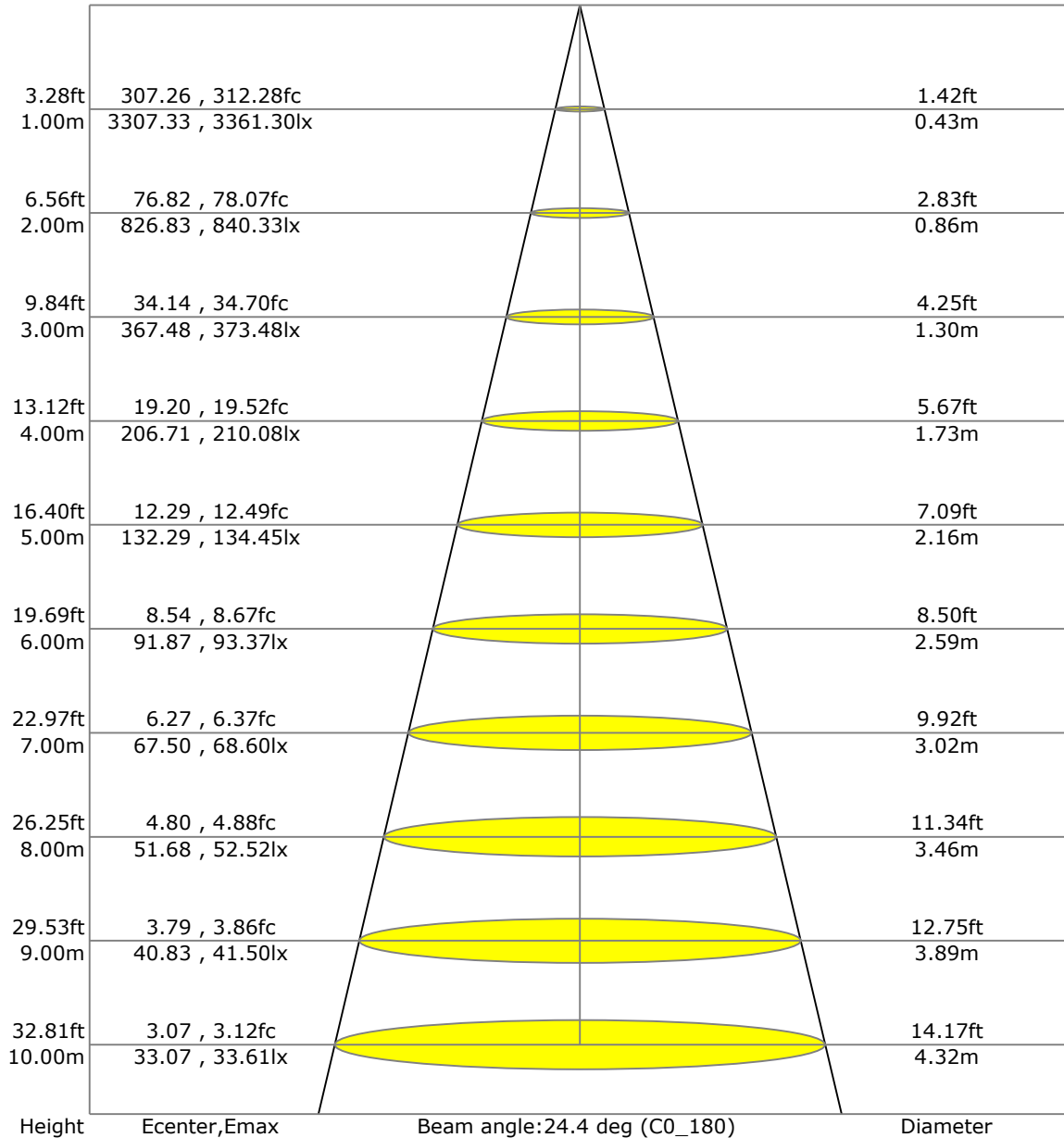
C Range: 0 - 360 Deg
 C Interval: 45.0 Deg
 Test Speed: High
 Temperature: 25
 Operators: QC01
 Test Date: 2025/1/7 18:32:23

G Range: 0 - 90 Deg
 G Interval: 1.0 Deg
 Test System: Huipu CPM-1600B Goniophotometer
 Humidity: 60
 Test Distance: 6.78 m
 Remarks:

Report No.:

Test Time: 2025/1/7 18:32:23

LX-DISTANCE DIAGRAM



C Range: 0 - 360 Deg
 C Interval: 45.0 Deg
 Test Speed: High
 Temperature: 25
 Operators: QC01
 Test Date: 2025/1/7 18:32:23

G Range: 0 - 90 Deg
 G Interval: 1.0 Deg
 Test System: Huipu CPM-1600B Goniophotometer
 Humidity: 60
 Test Distance: 6.78 m
 Remarks:

Report No.:

Test Time: 2025/1/7 18:32:23

UGR(Unified Glare Rating) TABLE

RHOCC	70	70	50	50	30	70	70	50	50	30
RHOW	50	30	50	30	30	50	30	50	30	30
RHOF	20	20	20	20	20	20	20	20	20	20
Room Size X	Viewed Endwise					Viewed Crosswise				
2H 2H	10.12	10.18	10.32	10.36	10.61	10.60	10.66	10.80	10.85	11.09
3H	10.17	10.23	10.38	10.43	10.67	10.62	10.68	10.83	10.88	11.12
4H	10.17	10.23	10.38	10.43	10.68	10.61	10.67	10.82	10.87	11.12
6H	10.16	10.22	10.37	10.42	10.67	10.60	10.66	10.81	10.86	11.11
8H	10.15	10.21	10.37	10.42	10.67	10.59	10.65	10.81	10.85	11.11
12H	10.14	10.20	10.36	10.41	10.66	10.58	10.64	10.80	10.85	11.10
4H 2H	10.79	10.85	11.00	11.05	11.30	11.71	11.77	11.92	11.97	12.22
3H	10.87	10.94	11.09	11.14	11.40	11.76	11.83	11.99	12.03	12.29
4H	10.87	10.94	11.10	11.15	11.41	11.75	11.82	11.98	12.03	12.29
6H	10.86	10.92	11.10	11.14	11.41	11.73	11.79	11.97	12.01	12.28
8H	10.85	10.91	11.09	11.14	11.40	11.72	11.78	11.96	12.01	12.27
12H	10.84	10.90	11.09	11.13	11.40	11.70	11.77	11.95	12.00	12.27
8H 4H	10.80	10.86	11.02	11.06	11.32	11.93	11.99	12.15	12.20	12.45
6H	10.86	10.91	11.11	11.15	11.43	11.98	12.04	12.24	12.28	12.55
8H	10.84	10.90	11.11	11.15	11.42	11.97	12.02	12.23	12.27	12.55
12H	10.83	10.88	11.10	11.14	11.42	11.95	12.01	12.22	12.26	12.54
12H 4H	10.86	10.92	11.11	11.15	11.42	12.09	12.15	12.34	12.38	12.65
6H	10.84	10.90	11.10	11.14	11.42	12.07	12.13	12.33	12.37	12.65

C Range: 0 - 360 Deg
 C Interval: 45.0 Deg
 Test Speed: High
 Temperature: 25
 Operators: QC01
 Test Date: 2025/1/7 18:32:23

G Range: 0 - 90 Deg
 G Interval: 1.0 Deg
 Test System: Huipu CPM-1600B Goniophotometer
 Humidity: 60
 Test Distance: 6.78 m
 Remarks:

ZONAL LUMINOUS FLUX TABLE

Gamma [deg]	I _{mean} [cd]	Zonal Flux [lm]	Sum Flux [lm]	Zonal Flux [%]	Sum Flux [%]
0	3302.99	0.00	0.00	0.00	0.00
5	3071.15	74.62	74.62	8.71	8.71
10	2291.42	178.99	253.62	20.90	29.61
15	1415.47	195.08	448.70	22.78	52.39
20	760.76	153.22	601.92	17.89	70.28
25	314.75	90.17	692.09	10.53	80.80
30	118.62	40.50	732.59	4.73	85.53
35	74.12	24.49	757.08	2.86	88.39
40	58.17	20.77	777.85	2.43	90.82
45	47.63	18.71	796.56	2.18	93.00
50	38.69	16.69	813.25	1.95	94.95
55	28.98	13.90	827.15	1.62	96.57
60	20.43	10.56	837.71	1.23	97.81
65	13.85	7.62	845.33	0.89	98.70
70	8.82	5.17	850.50	0.60	99.30
75	5.06	3.18	853.68	0.37	99.67
80	2.39	1.68	855.36	0.20	99.87
85	1.17	0.79	856.15	0.09	99.96
90	0.40	0.35	856.50	0.04	100.00

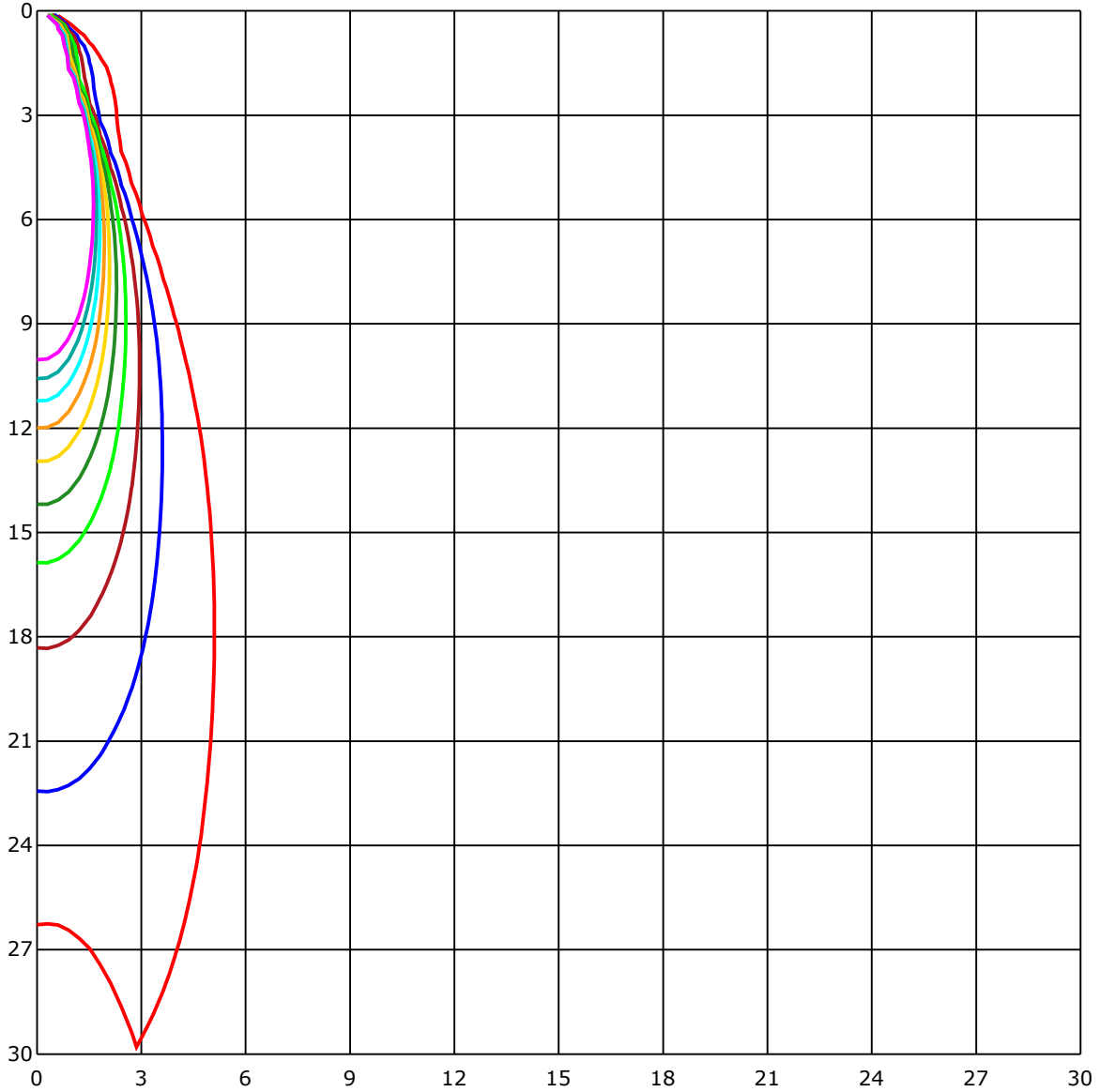
C Range: 0 - 360 Deg
 C Interval: 45.0 Deg
 Test Speed: High
 Temperature: 25
 Operators: QC01
 Test Date: 2025/1/7 18:32:23

G Range: 0 - 90 Deg
 G Interval: 1.0 Deg
 Test System: Huipu CPM-1600B Goniophotometer
 Humidity: 60
 Test Distance: 6.78 m
 Remarks:

Report No.:

Test Time: 2025/1/7 18:32:23

SPACE ISOLX DIAGRAM



Unit of illumination:lx

- | | |
|----------|----------|
| — 32.854 | — 16.427 |
| — 29.568 | — 13.141 |
| — 26.283 | — 9.856 |
| — 22.997 | — 6.571 |
| — 19.712 | — 3.285 |

C Range: 0 - 360 Deg
 C Interval: 45.0 Deg
 Test Speed: High
 Temperature: 25
 Operators: QC01
 Test Date: 2025/1/7 18:32:23

G Range: 0 - 90 Deg
 G Interval: 1.0 Deg
 Test System: Huipu CPM-1600B Goniophotometer
 Humidity: 60
 Test Distance: 6.78 m
 Remarks:

Report No.:

Test Time: 2025/1/7 18:32:23

LUMINOUS DISTRIBUTION INTENSITY DATA

Gamma\C	C0	C45	C90	C135	C180	C225	C270	C315	C360	
G0	3307.33	3329.58	3293.73	3281.32	3307.33	3329.58	3293.73	3281.32	3307.33	
G1	3313.45	3302.05	3346.41	3224.04	3270.74	3319.33	3211.67	3317.86	3313.45	
G2	3284.67	3249.6	3361.3	3138.13	3196.83	3282.33	3109.21	3307.38	3284.67	
G3	3231.58	3174.95	3348.57	3022.29	3103.33	3215.63	2982.52	3270.1	3231.58	
G4	3139.6	3074.74	3312.58	2882.91	2979.58	3133.71	2843.33	3202.76	3139.6	
G5	3027.07	2944.09	3237.0	2728.91	2838.18	3008.59	2673.39	3109.44	3027.07	
G6	2881.02	2797.64	3140.1	2548.35	2678.17	2874.45	2495.76	2991.07	2881.02	
G7	2731.08	2643.55	3023.43	2362.78	2497.79	2717.47	2311.61	2846.32	2731.08	
G8	2560.03	2472.46	2895.73	2168.28	2306.01	2551.02	2128.98	2679.18	2560.03	
G9	2382.31	2299.89	2739.86	1977.01	2117.76	2369.17	1940.65	2504.68	2382.31	
G10	2192.83	2117.95	2579.7	1791.02	1924.88	2193.34	1760.82	2323.06	2192.83	
G11	2007.12	1935.5	2397.71	1610.83	1744.46	2003.07	1583.11	2137.16	2007.12	
G12	1813.96	1756.41	2217.1	1438.12	1564.9	1822.65	1419.27	1946.53	1813.96	
G13	1636.38	1589.36	2035.9	1278.8	1402.68	1649.03	1262.66	1765.69	1636.38	
G14	1466.02	1429.8	1857.26	1134.91	1244.04	1481.42	1120.99	1589.31	1466.02	
G15	1310.97	1279.76	1683.0	1003.4	1100.3	1324.72	990.02	1427.69	1310.97	
G16	1168.98	1138.82	1519.67	882.0	968.65	1181.66	867.06	1274.52	1168.98	
G17	1037.19	1007.03	1364.85	772.41	850.78	1043.3	750.57	1136.52	1037.19	
G18	914.77	884.11	1220.0	668.56	738.48	915.23	640.85	1006.75	914.77	
G19	805.73	771.49	1082.51	571.98	632.8	793.14	540.31	888.11	805.73	
G20	703.5	665.16	955.32	479.5	533.92	680.29	449.75	778.25	703.5	
G21	607.7	566.74	837.64	395.24	442.49	576.67	368.25	672.93	607.7	
G22	514.52	475.41	726.94	317.78	359.29	482.44	296.4	573.96	514.52	
G23	428.33	391.93	620.94	251.95	288.22	395.28	236.78	480.92	428.33	
G24	348.21	317.32	521.19	198.08	229.7	320.58	189.39	393.54	348.21	
G25	275.49	254.44	431.32	158.04	185.02	259.49	153.35	316.58	275.49	
G26	215.59	204.61	352.58	129.22	152.39	211.27	126.87	251.86	215.59	
G27	170.73	165.35	284.82	108.99	128.48	173.62	107.66	201.66	170.73	
G28	136.76	135.24	232.0	94.65	111.7	145.9	94.69	163.74	136.76	
G29	112.58	113.73	191.09	85.27	100.49	125.13	84.77	135.93	112.58	
G30	95.2	98.37	160.11	78.47	92.12	110.42	77.59	116.02	95.2	
G31	84.08	87.62	136.34	73.37	86.1	100.03	72.31	102.37	84.08	
G32	76.77	79.89	119.29	69.0	80.81	92.4	67.71	93.04	76.77	
G33	71.66	74.19	107.15	65.46	76.81	86.14	63.9	85.82	71.66	
G34	67.62	69.55	98.23	62.29	72.95	81.09	60.77	80.49	67.62	
G35	64.4	65.73	90.74	59.39	69.78	76.63	57.78	76.49	64.4	
G36	61.46	62.1	84.86	56.77	66.88	72.63	55.3	72.63	61.46	

C Range: 0 - 360 Deg
 C Interval: 45.0 Deg
 Test Speed: High
 Temperature: 25
 Operators: QC01
 Test Date: 2025/1/7 18:32:23

G Range: 0 - 90 Deg
 G Interval: 1.0 Deg
 Test System: Huipu CPM-1600B Goniophotometer
 Humidity: 60
 Test Distance: 6.78 m
 Remarks:

Report No.:

Test Time: 2025/1/7 18:32:23

LUMINOUS DISTRIBUTION INTENSITY DATA(Continue 1)

Gamma\C	C0	C45	C90	C135	C180	C225	C270	C315	C360	
G37	59.02	59.35	79.62	54.33	64.22	69.0	52.82	69.64	59.02	
G38	56.59	56.5	75.11	52.17	61.6	66.01	50.7	66.88	56.59	
G39	54.38	53.92	71.16	50.2	59.67	63.02	48.68	64.31	54.38	
G40	52.4	51.71	67.76	47.76	57.51	60.4	46.7	61.97	52.4	
G41	50.66	49.46	64.82	45.97	55.39	57.92	44.82	59.94	50.66	
G42	48.63	47.21	61.74	44.22	53.51	55.94	43.07	57.83	48.63	
G43	46.61	45.28	59.02	42.52	51.44	53.87	41.42	55.81	46.61	
G44	44.87	43.49	56.86	40.87	49.69	51.58	39.76	53.92	44.87	
G45	43.21	41.79	54.52	39.26	47.39	49.69	38.11	52.27	43.21	
G46	41.65	40.18	52.54	37.6	45.69	47.53	36.59	50.38	41.65	
G47	40.31	38.52	50.43	36.04	43.95	45.78	34.84	48.54	40.31	
G48	38.52	36.87	48.54	34.34	42.06	43.9	33.37	46.24	38.52	
G49	36.87	35.35	46.15	32.64	40.22	42.06	31.53	44.68	36.87	
G50	35.4	33.65	44.31	30.89	38.06	40.22	29.74	42.66	35.4	
G51	33.83	31.9	42.34	28.82	36.09	38.15	27.72	40.96	33.83	
G52	32.09	30.02	40.59	26.8	33.79	36.32	25.93	39.21	32.09	
G53	30.06	27.81	38.48	24.91	31.86	34.02	23.95	37.05	30.06	
G54	27.9	25.83	36.18	23.12	29.74	31.86	22.39	34.8	27.9	
G55	26.02	24.09	34.02	21.47	27.99	29.93	20.69	32.78	26.02	
G56	24.18	22.39	31.95	19.72	26.06	28.09	19.26	30.8	24.18	
G57	22.48	20.78	29.88	18.2	24.46	26.39	17.79	28.87	22.48	
G58	20.92	19.17	27.95	16.87	22.89	24.64	16.27	27.03	20.92	
G59	19.54	17.79	26.16	15.49	21.28	22.98	14.94	25.28	19.54	
G60	17.88	16.32	24.55	14.2	20.0	21.38	13.7	23.72	17.88	
G61	16.46	14.94	22.8	12.96	18.57	20.0	12.5	22.02	16.46	
G62	15.12	13.74	21.42	11.81	17.38	18.66	11.4	20.59	15.12	
G63	13.74	12.6	19.9	10.76	16.09	17.42	10.39	19.12	13.74	
G64	12.55	11.49	18.62	9.7	14.89	16.27	9.38	17.88	12.55	
G65	11.4	10.39	17.19	8.78	13.79	15.08	8.41	16.73	11.4	
G66	10.25	9.42	16.04	7.81	12.73	13.97	7.45	15.45	10.25	
G67	9.33	8.27	14.85	6.99	11.77	12.87	6.57	14.25	9.33	
G68	8.46	7.54	13.74	6.02	10.8	11.86	5.88	13.19	8.46	
G69	7.49	6.67	12.69	5.38	10.07	10.99	5.06	12.23	7.49	
G70	6.71	5.84	11.86	4.73	9.06	10.02	4.37	11.17	6.71	
G71	5.79	5.29	10.66	3.95	8.37	9.19	3.68	10.16	5.79	
G72	5.06	4.5	9.98	3.26	7.49	8.46	3.13	9.29	5.06	
G73	4.37	3.82	9.06	2.67	6.9	7.77	2.53	8.46	4.37	

C Range: 0 - 360 Deg
 C Interval: 45.0 Deg
 Test Speed: High
 Temperature: 25
 Operators: QC01
 Test Date: 2025/1/7 18:32:23

G Range: 0 - 90 Deg
 G Interval: 1.0 Deg
 Test System: Huipu CPM-1600B Goniophotometer
 Humidity: 60
 Test Distance: 6.78 m
 Remarks:

Report No.:

Test Time: 2025/1/7 18:32:23

LUMINOUS DISTRIBUTION INTENSITY DATA(Continue 2)

Gamma\C	C0	C45	C90	C135	C180	C225	C270	C315	C360	
G74	3.77	3.22	8.46	2.21	6.25	6.99	1.93	7.63	3.77	
G75	3.13	2.62	7.63	1.7	5.65	6.3	1.47	7.08	3.13	
G76	2.57	2.21	7.03	1.2	5.06	5.65	1.15	6.34	2.57	
G77	2.07	1.7	6.25	0.74	4.5	5.1	0.55	5.75	2.07	
G78	1.61	1.24	5.61	0.32	3.95	4.5	0.23	5.1	1.61	
G79	1.15	0.83	5.01	0.0	3.63	3.95	0.0	4.55	1.15	
G80	0.78	0.37	4.55	0.0	3.17	3.54	0.0	4.0	0.78	
G81	0.32	0.0	4.09	0.0	2.94	3.13	0.0	3.54	0.32	
G82	0.0	0.0	3.54	0.0	2.48	2.85	0.0	3.08	0.0	
G83	0.0	0.0	3.08	0.0	2.16	2.39	0.0	2.71	0.0	
G84	0.0	0.0	2.8	0.0	1.88	2.25	0.0	2.39	0.0	
G85	0.0	0.0	2.44	0.0	1.75	1.88	0.0	2.16	0.0	
G86	0.0	0.0	2.11	0.0	1.47	1.65	0.0	1.79	0.0	
G87	0.0	0.0	1.7	0.0	1.29	1.33	0.0	1.52	0.0	
G88	0.0	0.0	1.43	0.0	1.06	1.1	0.0	1.06	0.0	
G89	0.0	0.0	0.87	0.0	0.74	0.78	0.0	0.78	0.0	
G90	0.0	0.0	0.0	0.0	0.0	0.78	0.0	0.78	0.0	

C Range: 0 - 360 Deg
C Interval: 45.0 Deg
Test Speed: High
Temperature: 25
Operators: QC01
Test Date: 2025/1/7 18:32:23

G Range: 0 - 90 Deg
G Interval: 1.0 Deg
Test System: Huipu CPM-1600B Goniophotometer
Humidity: 60
Test Distance: 6.78 m
Remarks: