

Report No.:

Test Time: 2025/5/8 17:26:23

LUMINAIRE PHOTOMETRIC TEST REPORT

Luminaire Property

Manufacturer: InBright
 Luminaire Type: IBSP112CT085H68-24°-15W
 Lamp Type:
 Luminous Width: 58 mm
 Luminous Length: 58 mm
 Luminous Height: 45 mm

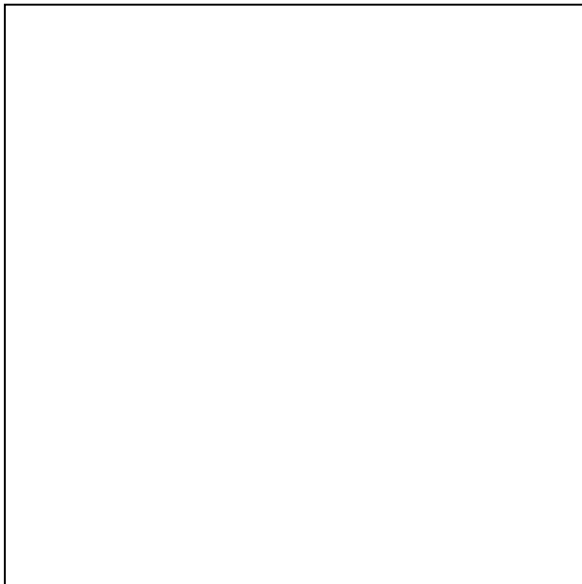
Voltage(V): 219.80 V
 Current(A): 0.0730 A
 Power(W): 15.40 W
 Power Factor: 0.9520
 Lamp Luminous Flux: 1444.67

Photometric Results

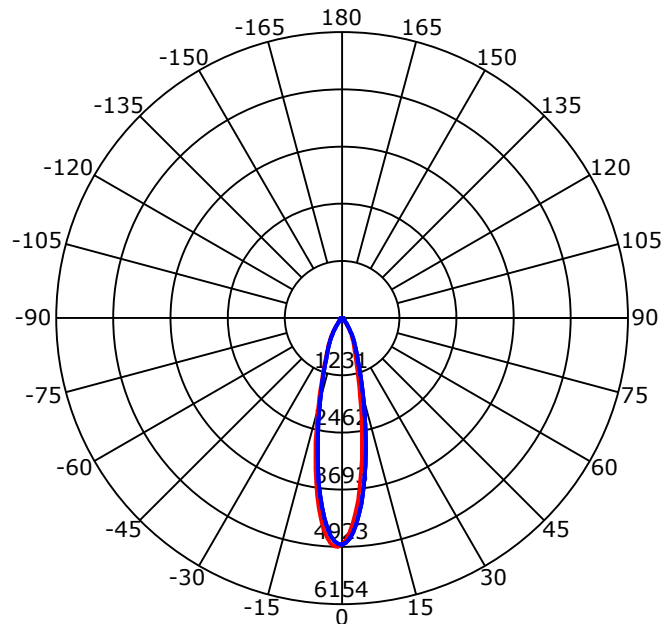
CIE Class: Direct
 Luminaire Luminous Flux: 1444.674 lm
 Downward Ratio: 100.00%
 Luminaire Efficacy Rating(LER): 93.81 lm/W
 Beam Angle(50%) C0-180,C90-270: 23.0,24.2
 Field Angle(10%) C0-180,C90-270: 57.1,57.6
 S/MH C0-180,C90-270: 0.389,0.425

Max. Intensity: 4923.44 cd
 Max.Intensity Angle: C=180 Gamma=1
 Upward Ratio: 0.00%
 Efficacy: 100.00%
 Center Intensity: 4874.54 cd
 Effective Luminous Flux: 1131.01 lm
 ERP(ϕ use)(120deg): 1406.06 lm

Picture of Luminaire



Luminous Intensity Distribution Curve



Beam Angle(50%) C0-180,C90-270: 23.0 deg,24.2 deg

C0-180 — C90-270 —

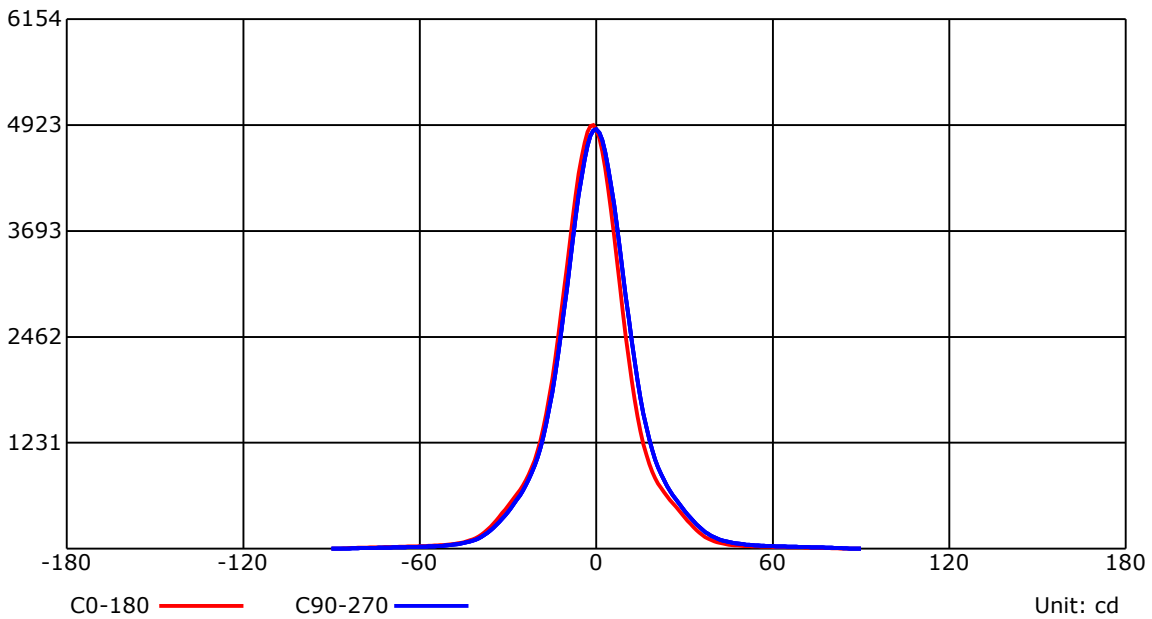
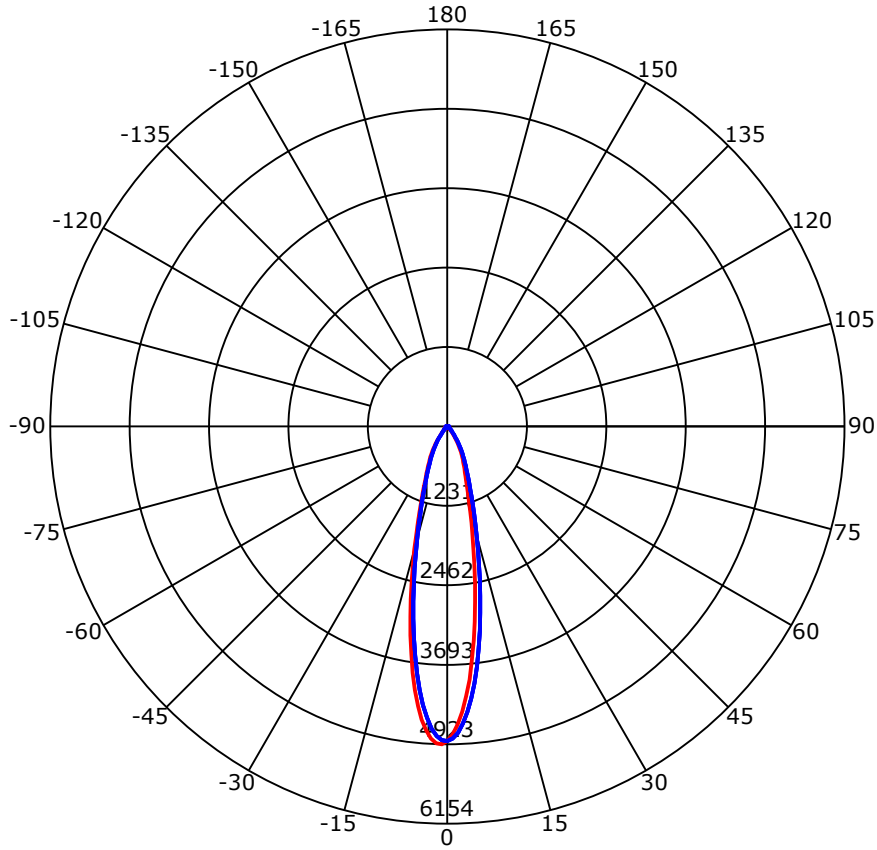
C Range: 0 - 360 Deg
 C Interval: 45.0 Deg
 Test Speed: High
 Temperature: 25
 Operators: QC01
 Test Date: 2025/5/8 17:26:23

G Range: 0 - 90 Deg
 G Interval: 1.0 Deg
 Test System: Huipu CPM-1600B Goniophotometer
 Humidity: 60
 Test Distance: 6.87 m
 Remarks:

Report No.:

Test Time: 2025/5/8 17:26:23

Luminous Intensity Distribution Curve



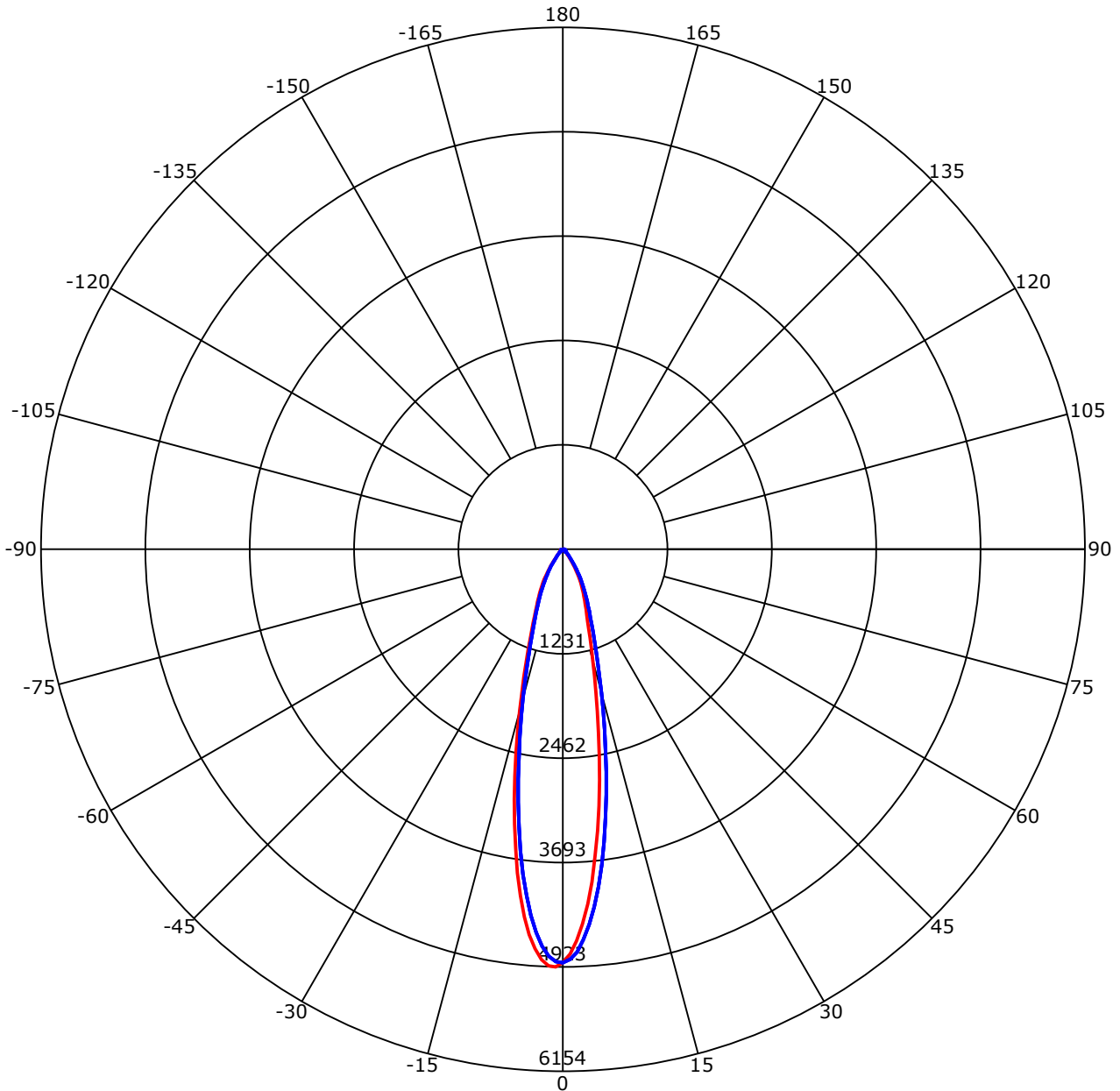
C Range: 0 - 360 Deg
 C Interval: 45.0 Deg
 Test Speed: High
 Temperature: 25
 Operators: QC01
 Test Date: 2025/5/8 17:26:23

G Range: 0 - 90 Deg
 G Interval: 1.0 Deg
 Test System: Huipu CPM-1600B Goniophotometer
 Humidity: 60
 Test Distance: 6.87 m
 Remarks:

Report No.:

Test Time: 2025/5/8 17:26:23

Luminous Intensity Distribution Curve



C0-180 — C90-270 —
 Unit: cd/klm

C Range: 0 - 360 Deg
 C Interval: 45.0 Deg
 Test Speed: High
 Temperature: 25
 Operators: QC01
 Test Date: 2025/5/8 17:26:23

G Range: 0 - 90 Deg
 G Interval: 1.0 Deg
 Test System: Huipu CPM-1600B Goniophotometer
 Humidity: 60
 Test Distance: 6.87 m
 Remarks:

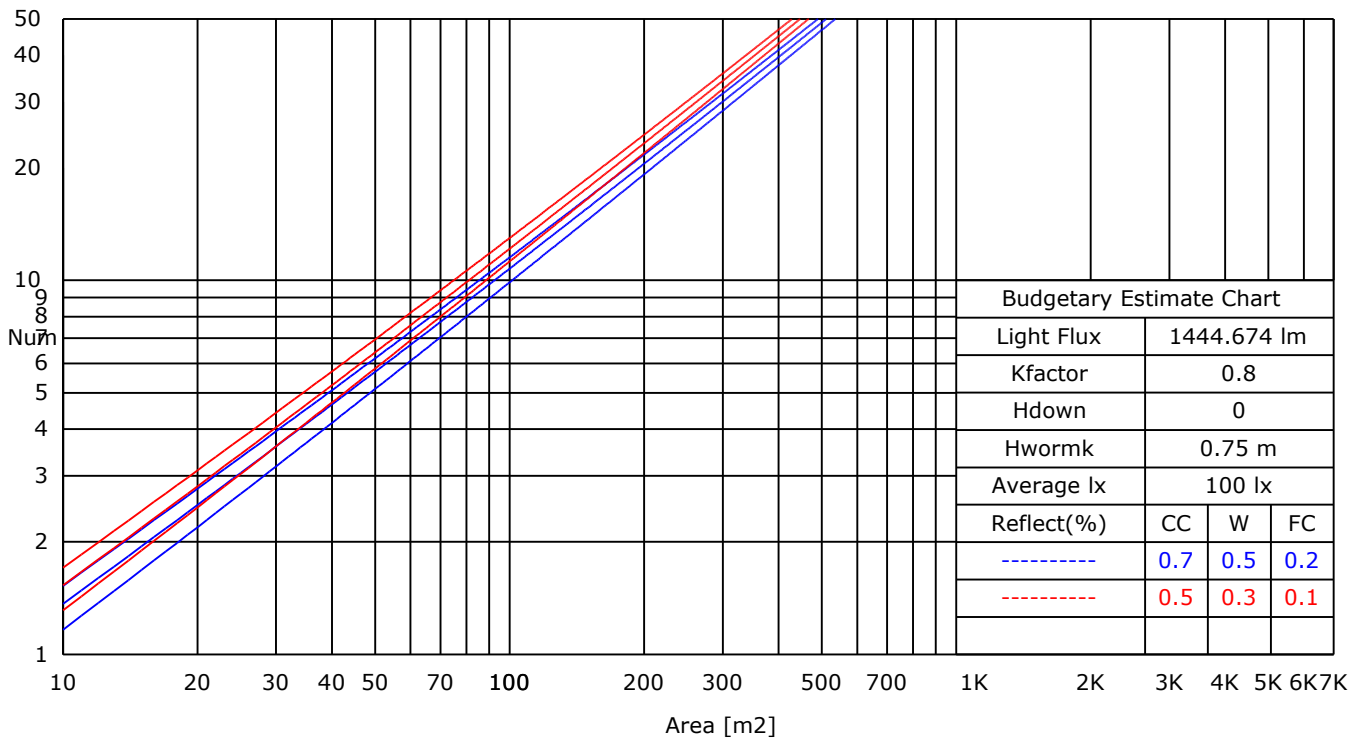
Report No.:

Test Time: 2025/5/8 17:26:23

UTILIZATION FACTORS TABLE

RHOCC	80			70			50			30			10			0
RHOW	50	30	10	50	30	10	50	30	10	50	30	10	50	30	10	0
RCR	COEFFICIENTS OF UTILIZATION FOR RHOFC=20															
0	1.19	1.19	1.19	1.16	1.16	1.16	1.11	1.11	1.11	1.06	1.06	1.06	1.02	1.02	1.02	1.00
1	0.93	0.90	0.88	0.92	0.89	0.86	0.89	0.86	0.83	0.85	0.82	0.78	0.80	0.76	0.73	0.68
2	0.88	0.86	0.84	0.88	0.84	0.82	0.85	0.82	0.79	0.82	0.78	0.75	0.78	0.73	0.70	0.65
3	0.84	0.82	0.80	0.84	0.81	0.79	0.82	0.78	0.75	0.79	0.75	0.71	0.75	0.71	0.67	0.63
4	0.81	0.79	0.77	0.81	0.78	0.76	0.79	0.75	0.72	0.76	0.72	0.69	0.73	0.68	0.65	0.61
5	0.78	0.76	0.75	0.78	0.75	0.73	0.76	0.73	0.70	0.74	0.70	0.66	0.71	0.66	0.62	0.59
6	0.76	0.74	0.73	0.75	0.73	0.71	0.74	0.70	0.68	0.72	0.67	0.64	0.69	0.64	0.61	0.57
7	0.73	0.72	0.71	0.73	0.70	0.69	0.71	0.68	0.66	0.70	0.65	0.62	0.67	0.63	0.59	0.55
8	0.71	0.70	0.69	0.71	0.69	0.67	0.69	0.66	0.64	0.68	0.64	0.61	0.66	0.61	0.57	0.54
9	0.69	0.68	0.67	0.69	0.67	0.65	0.68	0.64	0.62	0.66	0.62	0.59	0.64	0.59	0.56	0.53
10	0.68	0.66	0.65	0.67	0.65	0.64	0.66	0.63	0.61	0.64	0.60	0.58	0.62	0.58	0.55	0.51

LUMINAIRE BUDGETARY ESTIMATE DIAGRAM



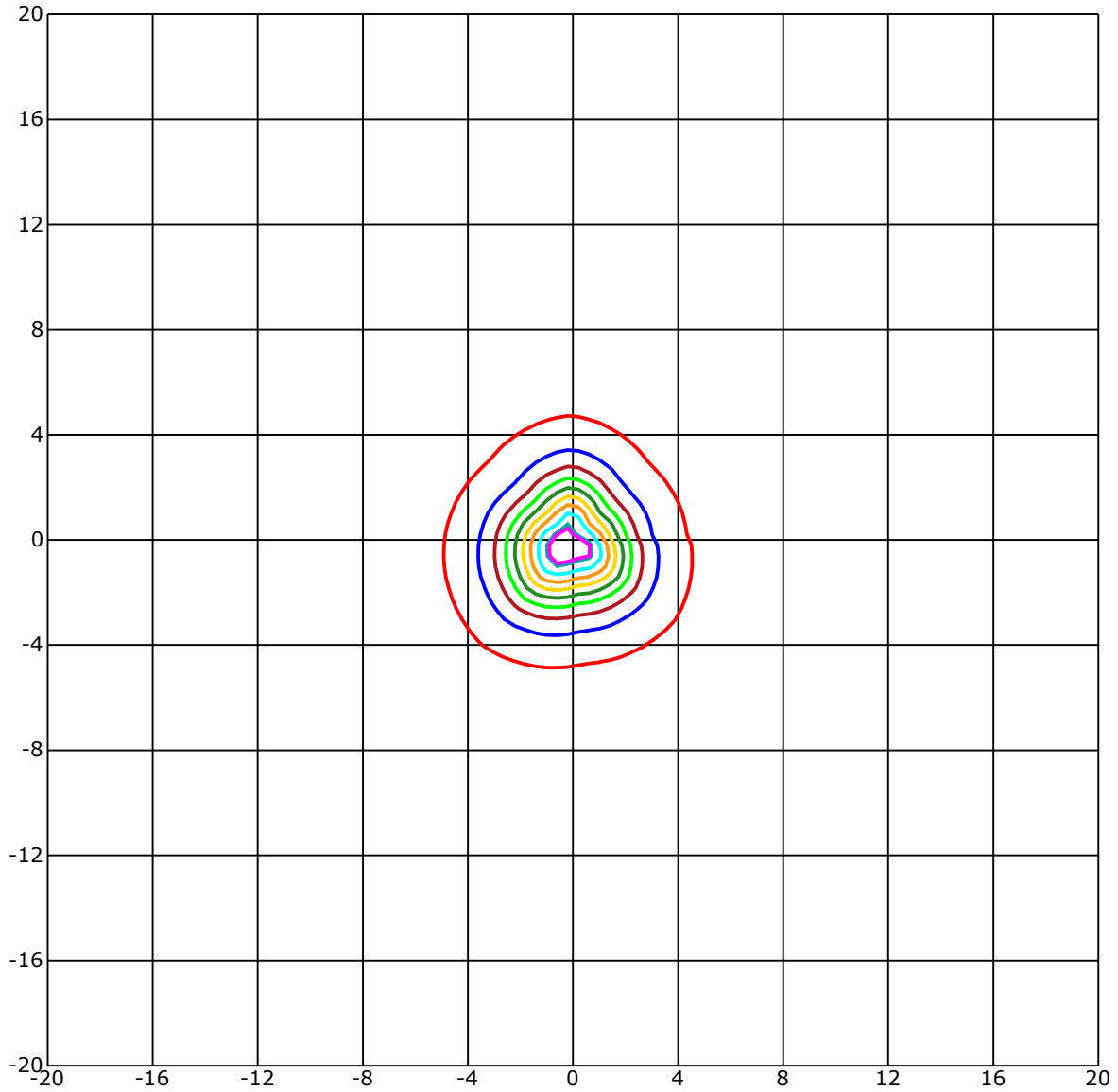
C Range: 0 - 360 Deg
 C Interval: 45.0 Deg
 Test Speed: High
 Temperature: 25
 Operators: QC01
 Test Date: 2025/5/8 17:26:23

G Range: 0 - 90 Deg
 G Interval: 1.0 Deg
 Test System: Huipu CPM-1600B Goniophotometer
 Humidity: 60
 Test Distance: 6.87 m
 Remarks:

Report No.:

Test Time: 2025/5/8 17:26:23

ISOLX DIAGRAM



Unit of illumination:lx Height of plane:10.0(m)/32.81(ft)

— 45.275(92%Emax)	— 24.606(50%Emax)
— 44.291(90%Emax)	— 19.685(40%Emax)
— 39.37(80%Emax)	— 14.764(30%Emax)
— 34.448(70%Emax)	— 9.842(20%Emax)
— 29.527(60%Emax)	— 4.921(10%Emax)

C Range: 0 - 360 Deg
 C Interval: 45.0 Deg
 Test Speed: High
 Temperature: 25
 Operators: QC01
 Test Date: 2025/5/8 17:26:23

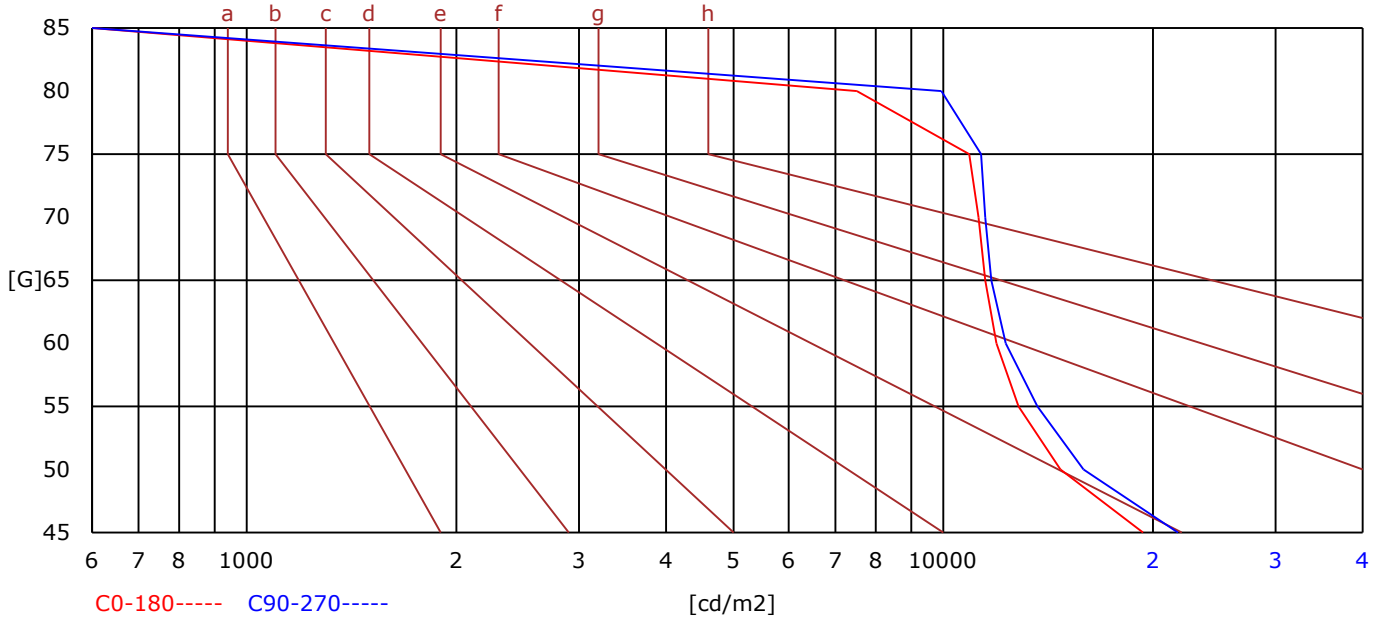
G Range: 0 - 90 Deg
 G Interval: 1.0 Deg
 Test System: Huipu CPM-1600B Goniophotometer
 Humidity: 60
 Test Distance: 6.87 m
 Remarks:

Report No.:

Test Time: 2025/5/8 17:26:23

BRIGHT LIMIT DIAGRAM

C/G	45	50	55	60	65	70	75	80	85
C0	19345	14733	12817	11925	11486	11240	10896	7514	0
C90	21726	15890	13649	12290	11719	11486	11329	9938	0
Dazzle	Quality	Illuminance	---	---	---	---	---	---	---
1.15	A	2000	1000	500	<=300				
1.5	B		2000	1000	500	<=300			
1.85	C			2000	1000	500	<=300		
2.2	D				2000	1000	500	<=300	
2.55	E					2000	1000	500	<=300
---	---	a	b	c	d	e	f	g	h



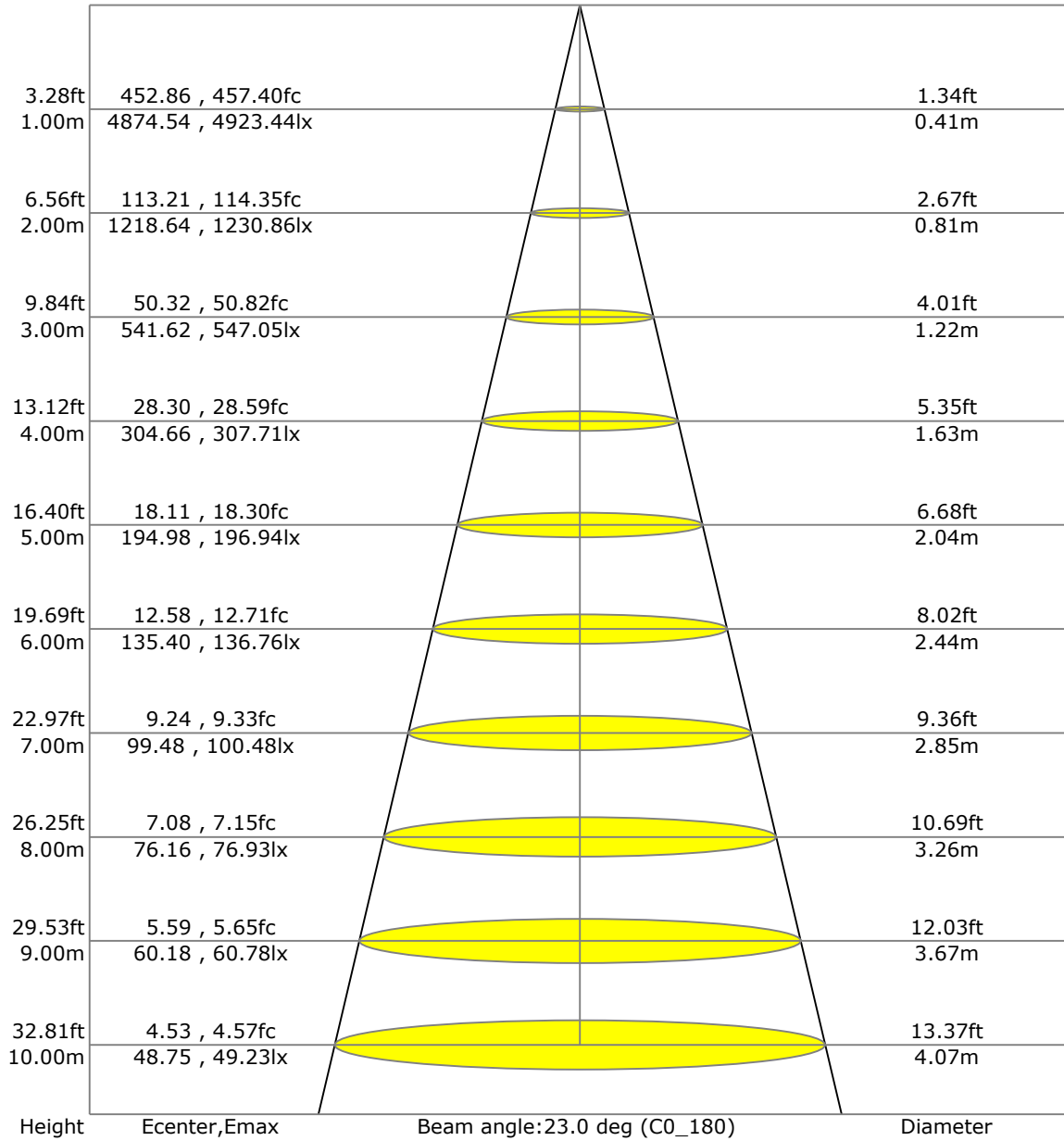
C Range: 0 - 360 Deg
 C Interval: 45.0 Deg
 Test Speed: High
 Temperature: 25
 Operators: QC01
 Test Date: 2025/5/8 17:26:23

G Range: 0 - 90 Deg
 G Interval: 1.0 Deg
 Test System: Huipu CPM-1600B Goniophotometer
 Humidity: 60
 Test Distance: 6.87 m
 Remarks:

Report No.:

Test Time: 2025/5/8 17:26:23

LX-DISTANCE DIAGRAM



C Range: 0 - 360 Deg
 C Interval: 45.0 Deg
 Test Speed: High
 Temperature: 25
 Operators: QC01
 Test Date: 2025/5/8 17:26:23

G Range: 0 - 90 Deg
 G Interval: 1.0 Deg
 Test System: Huipu CPM-1600B Goniophotometer
 Humidity: 60
 Test Distance: 6.87 m
 Remarks:

Report No.:

Test Time: 2025/5/8 17:26:23

UGR(Unified Glare Rating) TABLE

RHOCC	70	70	50	50	30	70	70	50	50	30
RHOW	50	30	50	30	30	50	30	50	30	30
RHOF	20	20	20	20	20	20	20	20	20	20
Room Size X	Viewed Endwise					Viewed Crosswise				
2H 2H	11.19	11.25	11.39	11.43	11.68	11.67	11.73	11.87	11.91	12.16
3H	11.29	11.35	11.49	11.54	11.78	11.72	11.78	11.93	11.98	12.22
4H	11.30	11.36	11.51	11.56	11.81	11.73	11.79	11.94	11.98	12.23
6H	11.30	11.36	11.51	11.56	11.81	11.72	11.78	11.93	11.98	12.23
8H	11.29	11.35	11.51	11.55	11.81	11.71	11.77	11.93	11.97	12.22
12H	11.28	11.34	11.50	11.54	11.80	11.70	11.76	11.92	11.96	12.22
4H 2H	12.46	12.52	12.67	12.72	12.97	13.30	13.36	13.51	13.56	13.81
3H	12.70	12.76	12.92	12.96	13.22	13.49	13.55	13.71	13.75	14.01
4H	12.76	12.82	12.99	13.03	13.29	13.52	13.58	13.75	13.79	14.05
6H	12.78	12.83	13.01	13.06	13.32	13.52	13.58	13.76	13.80	14.06
8H	12.77	12.83	13.01	13.05	13.32	13.51	13.56	13.75	13.79	14.06
12H	12.76	12.81	13.01	13.05	13.32	13.49	13.55	13.74	13.78	14.05
8H 4H	12.80	12.86	13.02	13.06	13.32	13.93	13.99	14.15	14.20	14.45
6H	13.20	13.25	13.45	13.49	13.77	14.29	14.34	14.54	14.58	14.85
8H	13.19	13.24	13.45	13.49	13.77	14.27	14.33	14.54	14.57	14.85
12H	13.18	13.23	13.45	13.48	13.76	14.26	14.31	14.53	14.56	14.84
12H 4H	13.17	13.23	13.42	13.46	13.73	14.40	14.46	14.65	14.69	14.96
6H	13.18	13.24	13.45	13.48	13.76	14.41	14.46	14.67	14.71	14.98

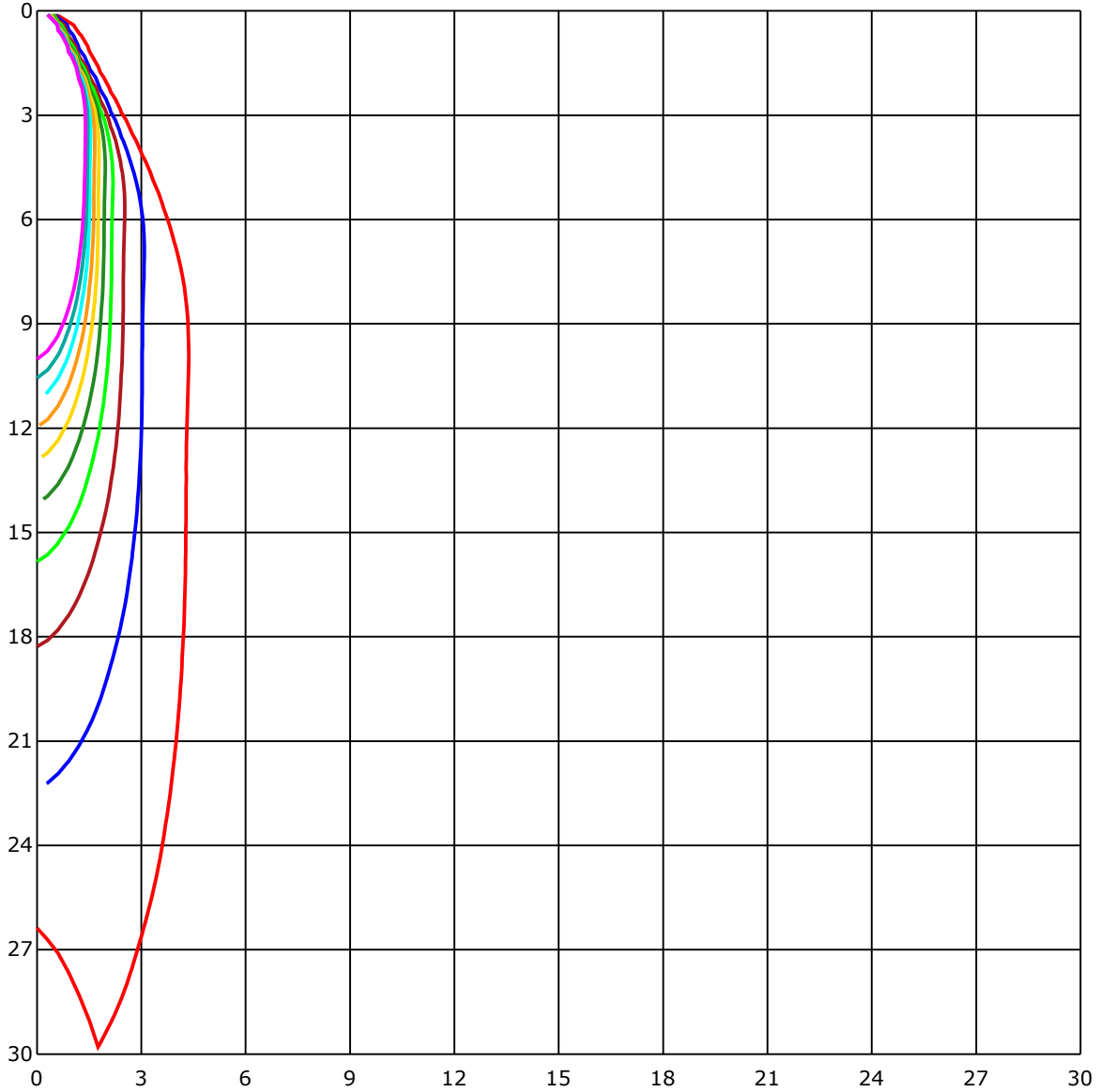
C Range: 0 - 360 Deg
 C Interval: 45.0 Deg
 Test Speed: High
 Temperature: 25
 Operators: QC01
 Test Date: 2025/5/8 17:26:23

G Range: 0 - 90 Deg
 G Interval: 1.0 Deg
 Test System: Huipu CPM-1600B Goniophotometer
 Humidity: 60
 Test Distance: 6.87 m
 Remarks:

Report No.:

Test Time: 2025/5/8 17:26:23

SPACE ISOLX DIAGRAM



Unit of illumination:lx

- | | |
|----------|----------|
| — 48.601 | — 24.301 |
| — 43.741 | — 19.44 |
| — 38.881 | — 14.58 |
| — 34.021 | — 9.72 |
| — 29.161 | — 4.86 |

C Range: 0 - 360 Deg
 C Interval: 45.0 Deg
 Test Speed: High
 Temperature: 25
 Operators: QC01
 Test Date: 2025/5/8 17:26:23

G Range: 0 - 90 Deg
 G Interval: 1.0 Deg
 Test System: Huipu CPM-1600B Goniophotometer
 Humidity: 60
 Test Distance: 6.87 m
 Remarks:

Report No.:

Test Time: 2025/5/8 17:26:23

LUMINOUS DISTRIBUTION INTENSITY DATA

Gamma\C	C0	C45	C90	C135	C180	C225	C270	C315	C360	
G0	4874.54	4643.0	4875.25	4822.2	4874.54	4643.0	4875.25	4822.2	4874.54	
G1	4772.36	4463.74	4834.57	4712.42	4923.44	4784.4	4860.9	4872.75	4772.36	
G2	4617.13	4243.66	4749.57	4562.81	4913.86	4873.93	4799.12	4872.99	4617.13	
G3	4424.47	3995.74	4609.39	4368.78	4844.71	4913.95	4686.42	4813.38	4424.47	
G4	4192.26	3728.08	4433.02	4144.69	4720.4	4896.63	4526.04	4707.75	4192.26	
G5	3936.17	3444.62	4232.05	3892.94	4558.75	4822.2	4329.94	4557.0	3936.17	
G6	3634.68	3155.87	4002.77	3606.36	4356.75	4700.81	4107.07	4361.98	3634.68	
G7	3343.57	2863.44	3747.39	3327.19	4115.76	4538.03	3863.96	4138.55	3343.57	
G8	3055.06	2582.99	3484.59	3034.48	3854.15	4331.54	3593.05	3884.21	3055.06	
G9	2753.23	2324.97	3209.77	2755.92	3568.89	4104.05	3311.85	3619.77	2753.23	
G10	2470.57	2078.41	2937.54	2482.23	3290.38	3851.31	3028.72	3334.84	2470.57	
G11	2199.56	1854.41	2672.81	2228.73	3000.17	3582.76	2757.57	3051.99	2199.56	
G12	1954.14	1646.13	2417.52	1985.01	2730.67	3305.95	2496.86	2772.3	1954.14	
G13	1734.01	1464.14	2183.33	1771.25	2461.51	3028.06	2254.22	2505.12	1734.01	
G14	1539.37	1308.35	1959.19	1575.01	2208.2	2762.48	2027.44	2251.2	1539.37	
G15	1366.11	1172.28	1754.69	1403.45	1974.06	2504.83	1816.14	2018.52	1366.11	
G16	1216.69	1054.57	1570.62	1253.83	1761.96	2258.37	1626.03	1801.51	1216.69	
G17	1089.35	952.1	1411.57	1125.74	1572.32	2029.7	1454.37	1607.9	1089.35	
G18	982.36	868.09	1270.02	1012.99	1406.37	1818.64	1302.45	1435.78	982.36	
G19	892.16	794.84	1146.6	919.96	1260.44	1625.7	1174.16	1285.08	892.16	
G20	819.48	732.26	1036.92	841.57	1138.11	1458.95	1062.45	1154.15	819.48	
G21	757.6	677.32	947.05	775.07	1028.99	1309.62	967.54	1044.37	757.6	
G22	704.74	626.73	864.93	717.02	937.52	1186.86	880.65	952.53	704.74	
G23	654.67	579.29	795.98	663.49	860.21	1074.49	805.23	872.48	654.67	
G24	610.02	534.5	731.27	614.46	794.14	978.16	736.74	802.77	610.02	
G25	568.16	491.41	673.69	569.24	735.0	894.1	675.25	742.36	568.16	
G26	527.66	450.59	622.2	526.01	682.18	820.99	619.98	687.94	527.66	
G27	488.3	410.8	573.91	484.76	632.72	755.1	570.23	639.8	488.3	
G28	448.89	371.86	527.66	442.47	588.26	696.63	520.72	593.5	448.89	
G29	407.03	332.74	483.91	401.98	543.99	641.74	474.66	550.69	407.03	
G30	367.0	295.59	441.39	361.43	500.9	589.82	429.35	506.09	367.0	
G31	324.62	260.39	399.19	323.16	456.39	539.55	386.68	463.76	324.62	
G32	286.91	228.1	358.65	285.54	412.97	492.74	347.89	421.09	286.91	
G33	251.09	198.89	321.46	251.09	370.02	448.37	310.6	380.83	251.09	
G34	217.77	173.64	285.35	219.32	329.29	404.57	275.11	339.96	217.77	
G35	187.51	150.7	252.69	190.25	291.06	362.14	242.07	301.54	187.51	
G36	160.19	130.88	223.24	163.44	254.72	322.35	211.91	265.2	160.19	

C Range: 0 - 360 Deg
 C Interval: 45.0 Deg
 Test Speed: High
 Temperature: 25
 Operators: QC01
 Test Date: 2025/5/8 17:26:23

G Range: 0 - 90 Deg
 G Interval: 1.0 Deg
 Test System: Huipu CPM-1600B Goniophotometer
 Humidity: 60
 Test Distance: 6.87 m
 Remarks:

Report No.:

Test Time: 2025/5/8 17:26:23

LUMINOUS DISTRIBUTION INTENSITY DATA(Continue 1)

Gamma\C	C0	C45	C90	C135	C180	C225	C270	C315	C360	
G37	136.35	114.26	195.16	141.07	221.26	284.79	184.07	231.78	136.35	
G38	116.77	100.67	170.85	121.82	191.19	250.66	160.04	202.05	116.77	
G39	100.48	88.16	150.98	105.91	164.72	219.75	139.47	175.76	100.48	
G40	86.7	77.78	133.38	92.13	143.15	192.52	121.77	152.87	86.7	
G41	75.47	69.33	118.89	80.66	124.84	168.59	106.62	133.71	75.47	
G42	66.55	62.54	105.82	71.22	109.73	147.77	94.16	116.67	66.55	
G43	59.09	56.26	94.91	63.67	96.75	129.32	83.59	102.84	59.09	
G44	53.0	51.16	85.71	57.06	85.99	113.84	74.29	91.18	53.0	
G45	47.48	46.02	77.45	51.68	76.69	101.05	66.55	81.65	47.48	
G46	43.14	42.52	70.8	46.91	69.19	90.48	59.94	73.16	43.14	
G47	39.32	39.03	64.85	42.95	62.96	81.37	54.23	66.26	39.32	
G48	36.39	36.29	59.61	39.65	58.05	73.63	48.85	60.27	36.39	
G49	33.89	33.93	54.98	36.91	53.62	66.88	44.6	55.36	33.89	
G50	32.0	31.86	51.26	34.36	49.98	61.26	40.97	51.02	32.0	
G51	30.3	30.06	47.39	32.38	46.35	56.31	37.85	47.06	30.3	
G52	28.93	28.7	44.46	30.44	43.75	52.01	35.02	44.18	28.93	
G53	27.56	27.14	42.05	28.79	41.11	47.9	32.57	41.77	27.56	
G54	26.52	25.86	39.6	27.47	38.89	44.88	30.39	39.41	26.52	
G55	25.49	24.73	37.57	26.34	37.0	41.96	28.74	37.52	25.49	
G56	24.54	23.79	35.68	25.06	35.44	39.6	26.9	35.63	24.54	
G57	23.55	22.61	33.98	23.79	33.75	37.43	25.49	34.22	23.55	
G58	22.84	21.71	32.38	22.84	32.33	35.68	24.26	32.71	22.84	
G59	21.71	20.86	30.96	21.71	31.06	33.98	23.22	31.34	21.71	
G60	21.05	20.06	29.69	20.67	29.83	32.38	21.95	30.3	21.05	
G61	20.01	19.3	28.65	19.82	28.6	30.87	21.0	28.93	20.01	
G62	19.3	18.45	27.37	19.07	27.47	29.55	20.15	27.75	19.3	
G63	18.55	17.89	26.43	18.41	26.38	28.03	19.26	26.76	18.55	
G64	18.17	17.18	25.25	17.65	25.39	26.9	18.5	25.77	18.17	
G65	17.37	16.33	24.31	16.66	24.07	25.77	17.56	24.87	17.37	
G66	16.75	15.76	23.41	15.86	23.32	24.97	16.71	23.74	16.75	
G67	16.09	15.06	22.56	15.24	22.28	23.74	16.0	22.94	16.09	
G68	15.43	14.25	21.66	14.54	21.33	22.84	15.2	21.85	15.43	
G69	14.77	13.64	20.72	13.83	20.44	21.76	14.44	21.19	14.77	
G70	14.11	12.93	19.92	13.22	19.73	20.91	13.78	20.39	14.11	
G71	13.5	12.22	19.02	12.65	18.78	20.01	13.07	19.54	13.5	
G72	12.84	11.61	18.31	11.85	17.98	19.21	12.32	18.78	12.84	
G73	12.22	10.9	17.37	11.19	17.27	18.31	11.8	18.27	12.22	

C Range: 0 - 360 Deg
 C Interval: 45.0 Deg
 Test Speed: High
 Temperature: 25
 Operators: QC01
 Test Date: 2025/5/8 17:26:23

G Range: 0 - 90 Deg
 G Interval: 1.0 Deg
 Test System: Huipu CPM-1600B Goniophotometer
 Humidity: 60
 Test Distance: 6.87 m
 Remarks:

