

Report No.:

Test Time: 2024/12/19 17:20:57

LUMINAIRE PHOTOMETRIC TEST REPORT

Luminaire Property

Manufacturer: InBright
 Luminaire Type: IBSP151CT075H76-24°-15W
 Lamp Type:
 Luminous Width: 60 mm
 Luminous Length: 60 mm
 Luminous Height: 50 mm

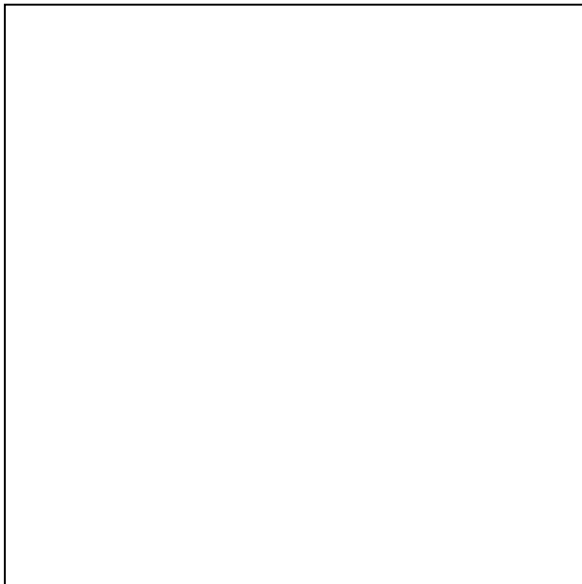
Voltage(V): 220.00 V
 Current(A): 0.0730 A
 Power(W): 15.46 W
 Power Factor: 0.9510
 Lamp Luminous Flux: 1183.80

Photometric Results

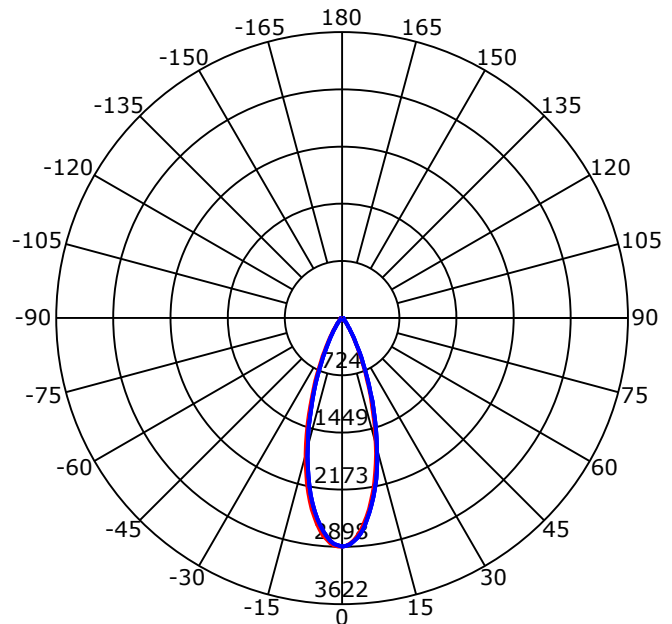
CIE Class: Direct
 Luminaire Luminous Flux: 1183.795 lm
 Downward Ratio: 100.00%
 Luminaire Efficacy Rating(LER): 76.57 lm/W
 Beam Angle(50%) C0-180,C90-270: 34.4,34.1
 Field Angle(10%) C0-180,C90-270: 62.0,61.4
 S/MH C0-180,C90-270: 0.573,0.573

Max. Intensity: 2897.67 cd
 Max.Intensity Angle: C=180 Gamma=0
 Upward Ratio: 0.00%
 Efficacy: 100.00%
 Center Intensity: 2897.67 cd
 Effective Luminous Flux: 1026.84 lm
 ERP(ϕ use)(120deg): 1175.45 lm

Picture of Luminaire



Luminous Intensity Distribution Curve



Beam Angle(50%) C0-180,C90-270: 34.4 deg,34.1 deg

C0-180 — C90-270

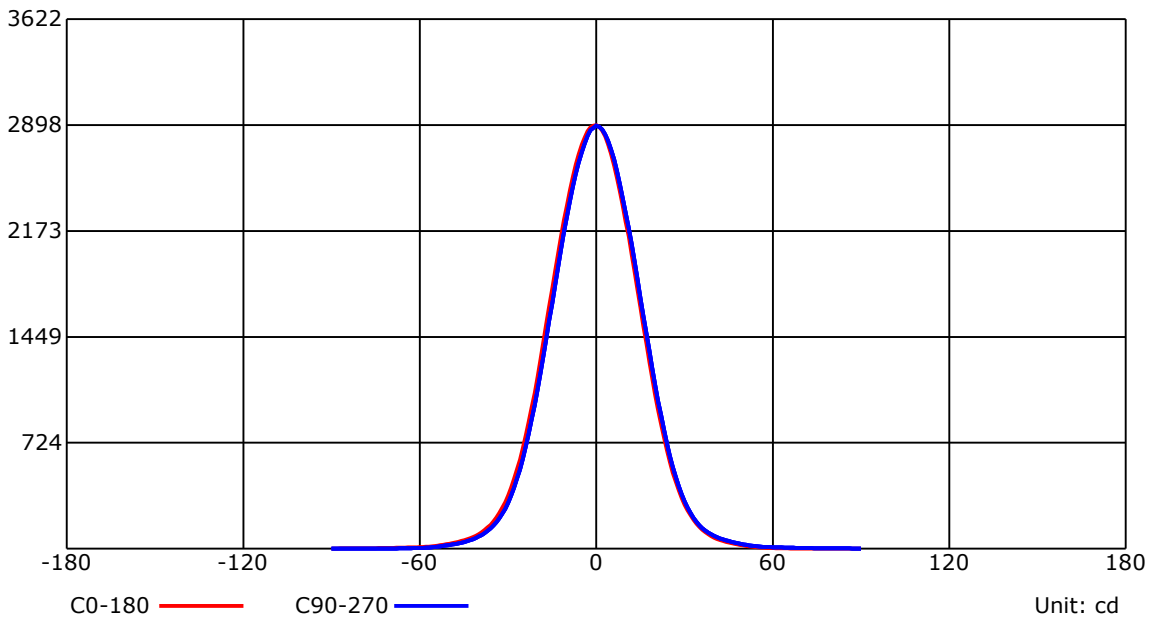
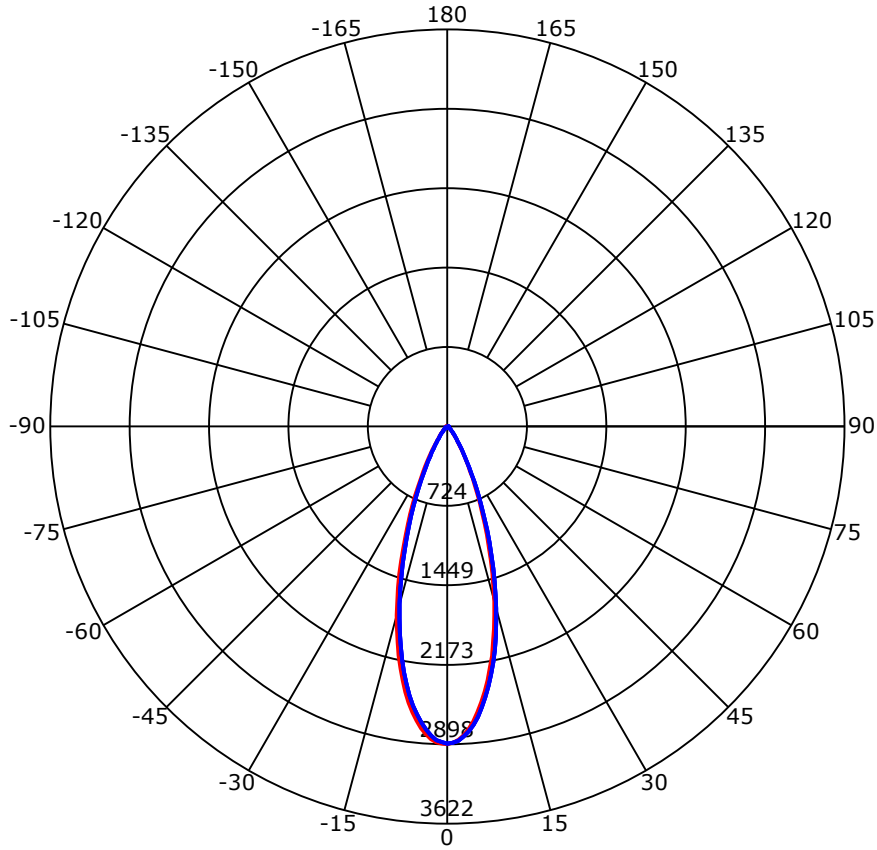
C Range: 0 - 360 Deg
 C Interval: 45.0 Deg
 Test Speed: High
 Temperature: 25
 Operators: QC01
 Test Date: 2024/12/19 17:20:57

G Range: 0 - 90 Deg
 G Interval: 1.0 Deg
 Test System: Huipu CPM-1600B Goniophotometer
 Humidity: 60
 Test Distance: 6.81 m
 Remarks:

Report No.:

Test Time: 2024/12/19 17:20:57

Luminous Intensity Distribution Curve



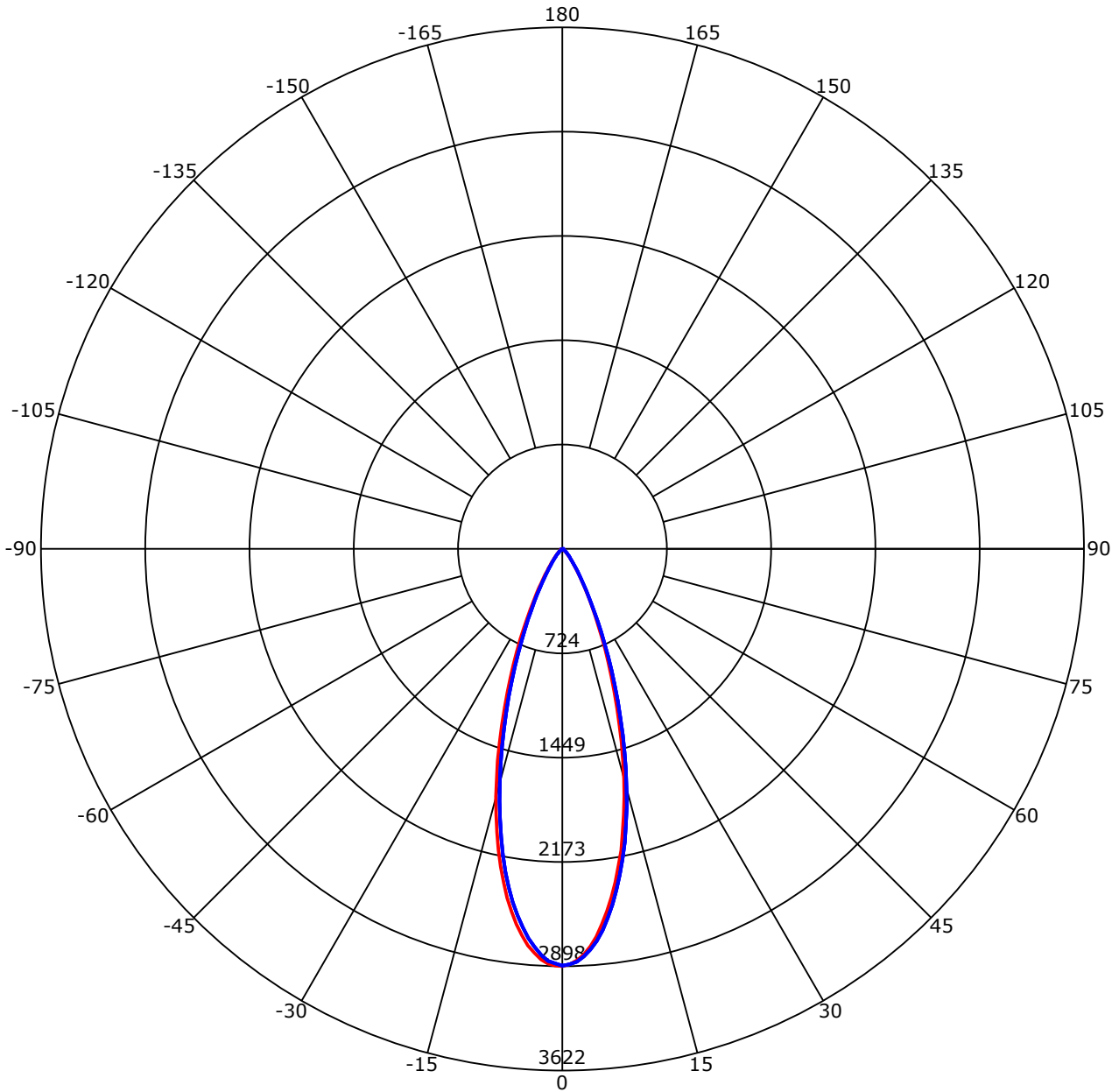
C Range: 0 - 360 Deg
 C Interval: 45.0 Deg
 Test Speed: High
 Temperature: 25
 Operators: QC01
 Test Date: 2024/12/19 17:20:57

G Range: 0 - 90 Deg
 G Interval: 1.0 Deg
 Test System: Huipu CPM-1600B Goniophotometer
 Humidity: 60
 Test Distance: 6.81 m
 Remarks:

Report No.:

Test Time: 2024/12/19 17:20:57

Luminous Intensity Distribution Curve



C0-180 — C90-270 —
 Unit: cd/klm

C Range: 0 - 360 Deg
 C Interval: 45.0 Deg
 Test Speed: High
 Temperature: 25
 Operators: QC01
 Test Date: 2024/12/19 17:20:57

G Range: 0 - 90 Deg
 G Interval: 1.0 Deg
 Test System: Huipu CPM-1600B Goniophotometer
 Humidity: 60
 Test Distance: 6.81 m
 Remarks:

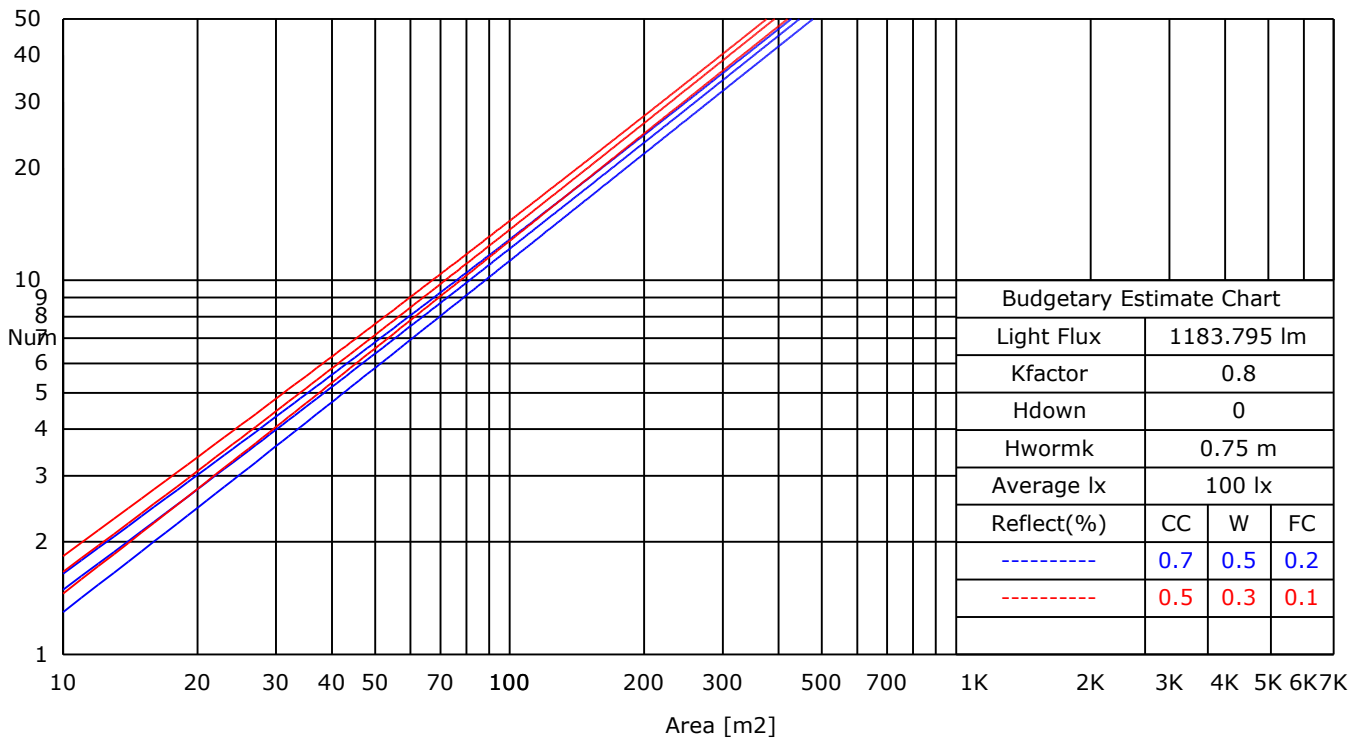
Report No.:

Test Time: 2024/12/19 17:20:57

UTILIZATION FACTORS TABLE

RHOCC	80			70			50			30			10			0
RHOW	50	30	10	50	30	10	50	30	10	50	30	10	50	30	10	0
RCR	COEFFICIENTS OF UTILIZATION FOR RHOFC=20															
0	1.19	1.19	1.19	1.16	1.16	1.16	1.11	1.11	1.11	1.06	1.06	1.06	1.02	1.02	1.02	1.00
1	1.01	0.99	0.97	1.00	0.98	0.96	0.97	0.94	0.92	0.92	0.89	0.87	0.86	0.83	0.81	0.76
2	0.95	0.92	0.91	0.94	0.91	0.89	0.91	0.88	0.85	0.87	0.84	0.81	0.82	0.79	0.76	0.71
3	0.91	0.89	0.87	0.90	0.87	0.86	0.87	0.84	0.82	0.84	0.81	0.78	0.80	0.76	0.73	0.68
4	0.88	0.86	0.85	0.87	0.85	0.83	0.85	0.82	0.79	0.82	0.78	0.75	0.78	0.74	0.71	0.66
5	0.85	0.84	0.82	0.84	0.82	0.81	0.82	0.79	0.77	0.79	0.76	0.73	0.76	0.72	0.69	0.65
6	0.83	0.81	0.80	0.82	0.80	0.79	0.80	0.77	0.75	0.77	0.74	0.71	0.74	0.70	0.67	0.63
7	0.81	0.79	0.78	0.80	0.78	0.77	0.78	0.75	0.73	0.76	0.72	0.69	0.73	0.68	0.65	0.62
8	0.79	0.78	0.77	0.78	0.76	0.75	0.76	0.73	0.71	0.74	0.70	0.68	0.71	0.67	0.64	0.60
9	0.77	0.76	0.75	0.76	0.75	0.73	0.74	0.72	0.70	0.72	0.69	0.66	0.70	0.65	0.62	0.59
10	0.76	0.74	0.74	0.75	0.73	0.72	0.73	0.70	0.68	0.71	0.67	0.65	0.68	0.64	0.61	0.58

LUMINAIRE BUDGETARY ESTIMATE DIAGRAM



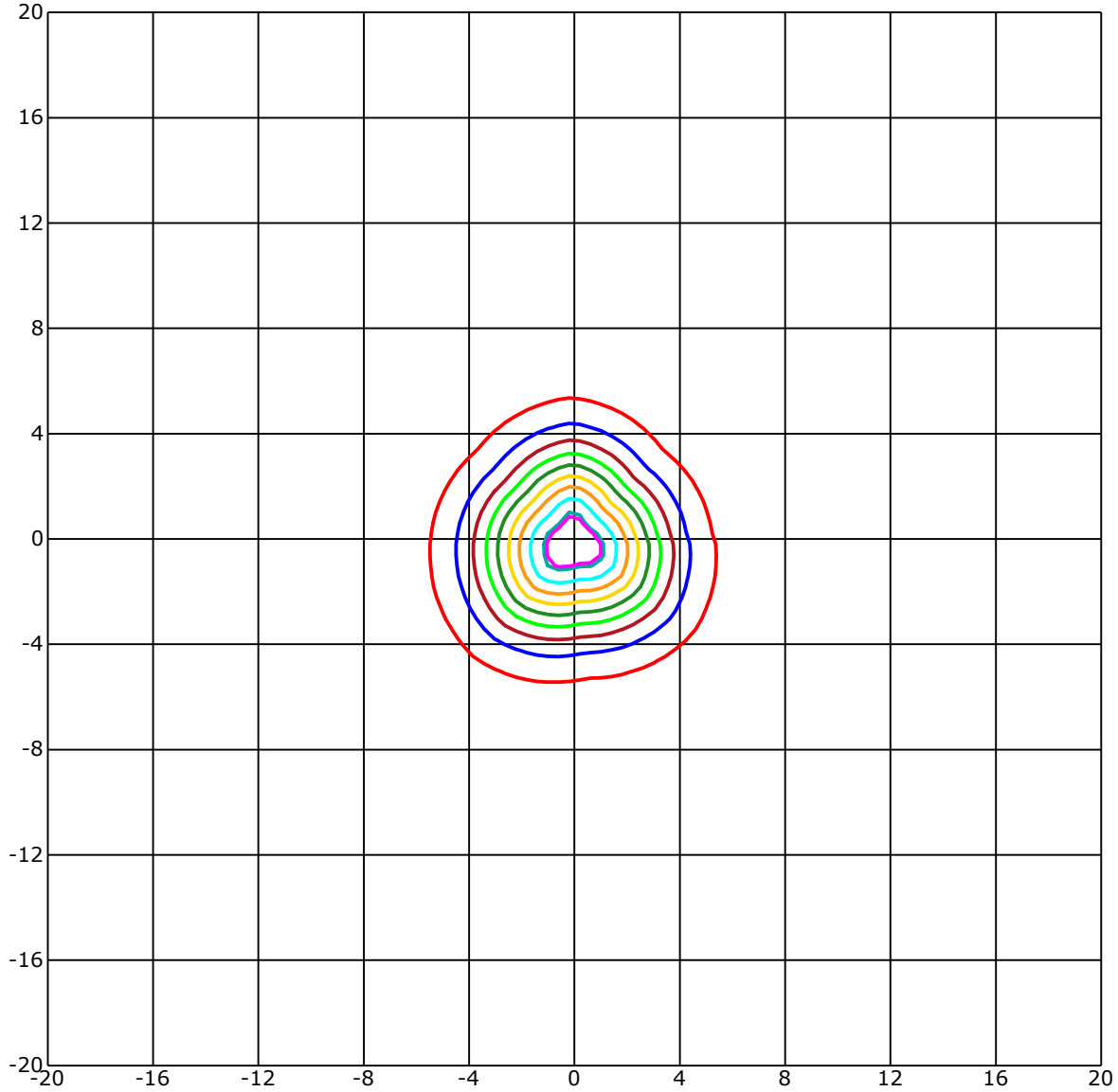
C Range: 0 - 360 Deg
 C Interval: 45.0 Deg
 Test Speed: High
 Temperature: 25
 Operators: QC01
 Test Date: 2024/12/19 17:20:57

G Range: 0 - 90 Deg
 G Interval: 1.0 Deg
 Test System: Huipu CPM-1600B Goniophotometer
 Humidity: 60
 Test Distance: 6.81 m
 Remarks:

Report No.:

Test Time: 2024/12/19 17:20:57

ISOLX DIAGRAM



Unit of illumination:lx Height of plane:10.0(m)/32.81(ft)

- | | |
|-------------------|-------------------|
| — 26.659(92%Emax) | — 14.488(50%Emax) |
| — 26.079(90%Emax) | — 11.591(40%Emax) |
| — 23.181(80%Emax) | — 8.693(30%Emax) |
| — 20.284(70%Emax) | — 5.795(20%Emax) |
| — 17.386(60%Emax) | — 2.898(10%Emax) |

C Range: 0 - 360 Deg
 C Interval: 45.0 Deg
 Test Speed: High
 Temperature: 25
 Operators: QC01
 Test Date: 2024/12/19 17:20:57

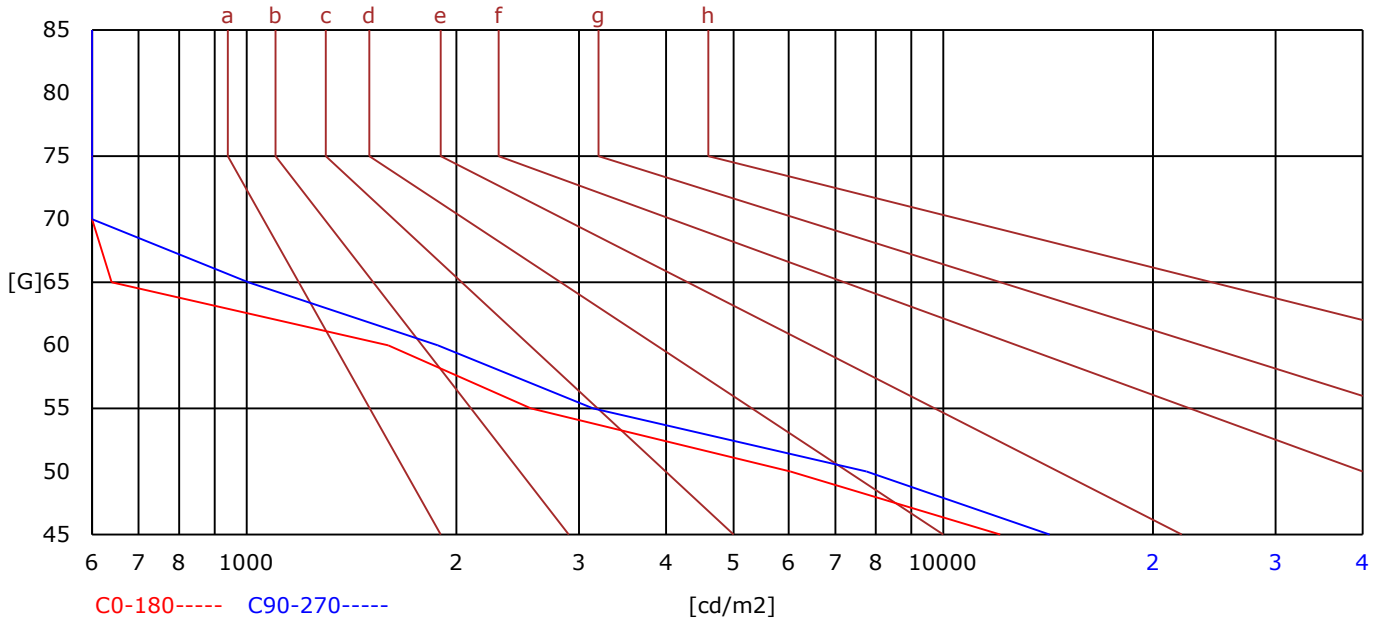
G Range: 0 - 90 Deg
 G Interval: 1.0 Deg
 Test System: Huipu CPM-1600B Goniophotometer
 Humidity: 60
 Test Distance: 6.81 m
 Remarks:

Report No.:

Test Time: 2024/12/19 17:20:57

BRIGHT LIMIT DIAGRAM

C/G	45	50	55	60	65	70	75	80	85
C0	12079	6032	2560	1597	640	0	0	0	0
C90	14210	7756	3144	1881	1006	0	0	0	0
Dazzle	Quality	Illuminance	---	---	---	---	---	---	---
1.15	A	2000	1000	500	<=300				
1.5	B		2000	1000	500	<=300			
1.85	C			2000	1000	500	<=300		
2.2	D				2000	1000	500	<=300	
2.55	E					2000	1000	500	<=300
---	---	a	b	c	d	e	f	g	h



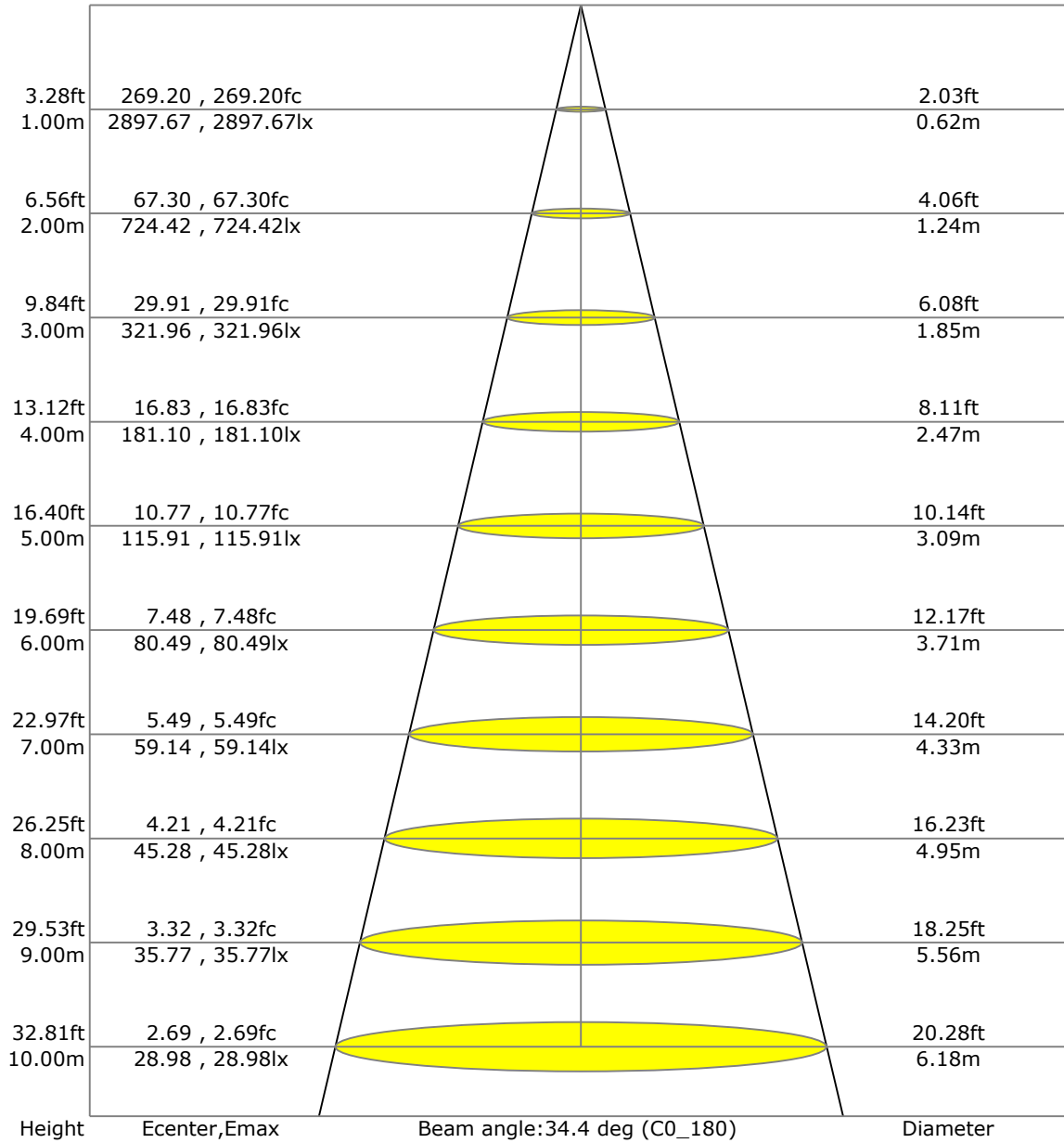
C Range: 0 - 360 Deg
 C Interval: 45.0 Deg
 Test Speed: High
 Temperature: 25
 Operators: QC01
 Test Date: 2024/12/19 17:20:57

G Range: 0 - 90 Deg
 G Interval: 1.0 Deg
 Test System: Huipu CPM-1600B Goniophotometer
 Humidity: 60
 Test Distance: 6.81 m
 Remarks:

Report No.:

Test Time: 2024/12/19 17:20:57

LX-DISTANCE DIAGRAM



C Range: 0 - 360 Deg
 C Interval: 45.0 Deg
 Test Speed: High
 Temperature: 25
 Operators: QC01
 Test Date: 2024/12/19 17:20:57

G Range: 0 - 90 Deg
 G Interval: 1.0 Deg
 Test System: Huipu CPM-1600B Goniophotometer
 Humidity: 60
 Test Distance: 6.81 m
 Remarks:

Report No.:

Test Time: 2024/12/19 17:20:57

UGR(Unified Glare Rating) TABLE

RHOCC	70	70	50	50	30	70	70	50	50	30
RHOW	50	30	50	30	30	50	30	50	30	30
RHOF	20	20	20	20	20	20	20	20	20	20
Room Size X	Viewed Endwise					Viewed Crosswise				
2H 2H	8.23	8.28	8.43	8.47	8.71	8.54	8.59	8.74	8.78	9.02
3H	8.21	8.27	8.42	8.46	8.70	8.52	8.57	8.72	8.76	9.01
4H	8.20	8.25	8.41	8.45	8.70	8.50	8.56	8.71	8.75	9.00
6H	8.19	8.24	8.40	8.44	8.69	8.49	8.54	8.70	8.74	8.99
8H	8.18	8.23	8.40	8.44	8.69	8.48	8.53	8.70	8.74	8.99
12H	8.17	8.22	8.39	8.43	8.68	8.47	8.52	8.69	8.73	8.98
4H 2H	8.21	8.26	8.42	8.46	8.71	8.74	8.79	8.95	8.99	9.24
3H	8.18	8.24	8.40	8.44	8.70	8.71	8.77	8.93	8.97	9.23
4H	8.17	8.22	8.40	8.43	8.69	8.69	8.75	8.92	8.96	9.22
6H	8.15	8.20	8.39	8.42	8.69	8.67	8.72	8.91	8.94	9.21
8H	8.14	8.19	8.38	8.42	8.68	8.66	8.71	8.90	8.94	9.20
12H	8.13	8.18	8.37	8.41	8.68	8.64	8.69	8.89	8.93	9.20
8H 4H	8.18	8.24	8.40	8.44	8.69	8.86	8.91	9.08	9.11	9.37
6H	8.11	8.16	8.36	8.40	8.67	8.81	8.86	9.06	9.09	9.37
8H	8.09	8.14	8.36	8.39	8.66	8.79	8.84	9.05	9.08	9.36
12H	8.08	8.12	8.35	8.38	8.66	8.77	8.82	9.04	9.07	9.35
12H 4H	8.12	8.17	8.37	8.40	8.67	8.94	8.99	9.19	9.23	9.50
6H	8.09	8.14	8.35	8.38	8.66	8.93	8.97	9.19	9.22	9.50

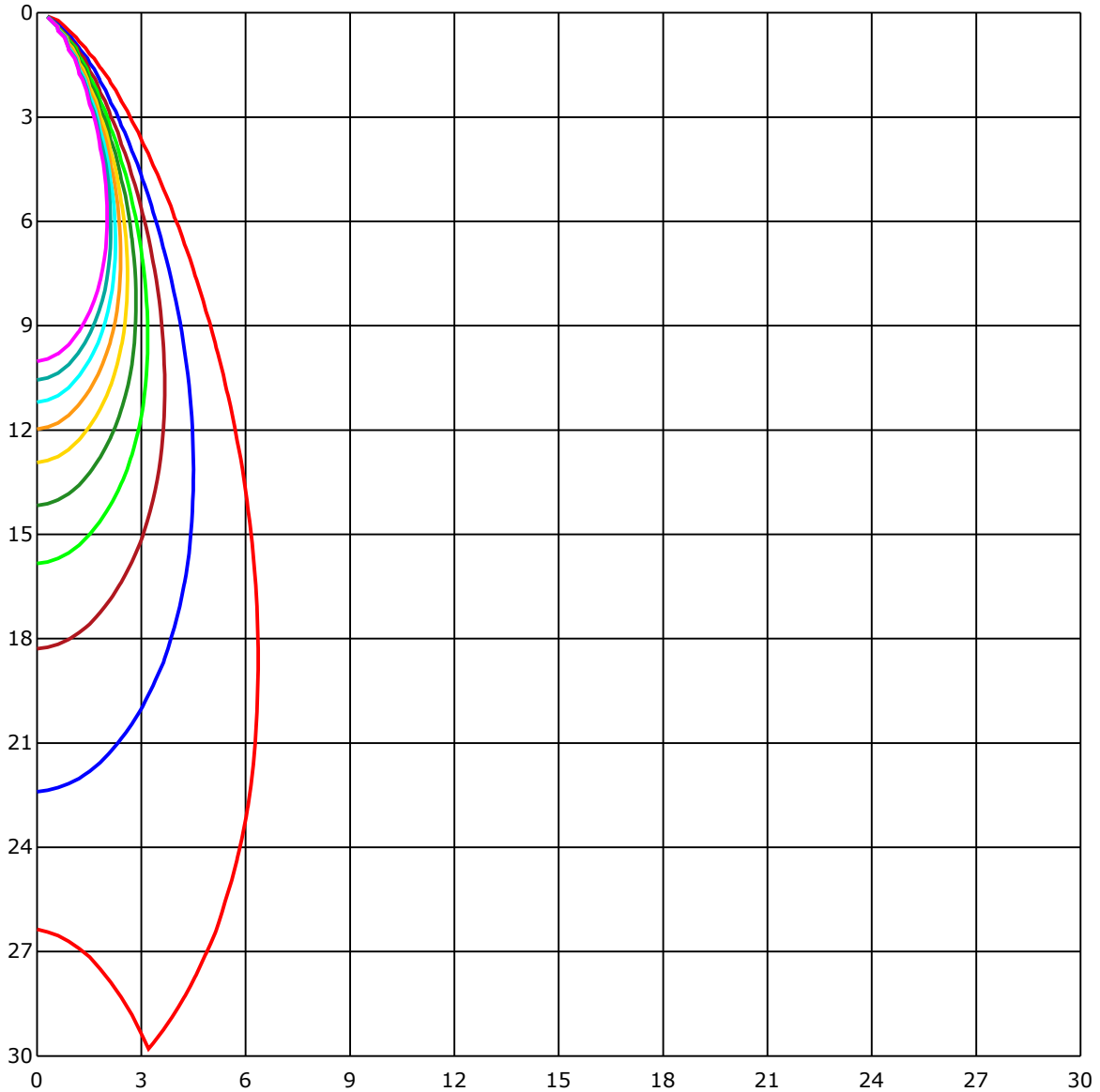
C Range: 0 - 360 Deg
 C Interval: 45.0 Deg
 Test Speed: High
 Temperature: 25
 Operators: QC01
 Test Date: 2024/12/19 17:20:57

G Range: 0 - 90 Deg
 G Interval: 1.0 Deg
 Test System: Huipu CPM-1600B Goniophotometer
 Humidity: 60
 Test Distance: 6.81 m
 Remarks:

Report No.:

Test Time: 2024/12/19 17:20:57

SPACE ISOLX DIAGRAM



Unit of illumination:lx

- | | |
|----------|----------|
| — 28.873 | — 14.436 |
| — 25.986 | — 11.549 |
| — 23.098 | — 8.662 |
| — 20.211 | — 5.775 |
| — 17.324 | — 2.887 |

C Range: 0 - 360 Deg
 C Interval: 45.0 Deg
 Test Speed: High
 Temperature: 25
 Operators: QC01
 Test Date: 2024/12/19 17:20:57

G Range: 0 - 90 Deg
 G Interval: 1.0 Deg
 Test System: Huipu CPM-1600B Goniophotometer
 Humidity: 60
 Test Distance: 6.81 m
 Remarks:

Report No.:

Test Time: 2024/12/19 17:20:57

LUMINOUS DISTRIBUTION INTENSITY DATA

Gamma\C	C0	C45	C90	C135	C180	C225	C270	C315	C360	
G0	2897.67	2841.56	2894.15	2868.5	2897.67	2841.56	2894.15	2868.5	2897.67	
G1	2884.13	2794.21	2883.99	2838.5	2894.01	2872.3	2878.05	2891.27	2884.13	
G2	2858.25	2739.39	2868.08	2794.35	2881.81	2885.2	2862.52	2896.05	2858.25	
G3	2820.73	2665.47	2833.3	2741.48	2855.38	2888.26	2822.59	2887.1	2820.73	
G4	2765.55	2589.18	2789.43	2668.25	2811.69	2876.06	2769.77	2862.52	2765.55	
G5	2703.03	2501.34	2733.04	2593.4	2764.25	2851.44	2712.31	2827.41	2703.03	
G6	2619.97	2402.93	2663.61	2501.39	2697.28	2820.64	2640.47	2774.59	2619.97	
G7	2534.64	2295.9	2581.99	2408.08	2625.54	2765.22	2563.16	2716.06	2534.64	
G8	2441.84	2188.81	2493.37	2304.89	2542.94	2705.95	2475.97	2637.73	2441.84	
G9	2343.06	2071.16	2397.27	2200.73	2452.37	2633.24	2379.37	2557.32	2343.06	
G10	2235.1	1957.49	2298.31	2084.88	2353.4	2558.11	2275.35	2466.88	2235.1	
G11	2132.79	1832.37	2191.41	1970.43	2247.62	2469.85	2162.94	2371.86	2132.79	
G12	2008.18	1710.81	2083.08	1848.09	2135.99	2376.17	2046.62	2268.63	2008.18	
G13	1893.26	1588.06	1963.98	1723.8	2019.91	2273.08	1925.03	2158.02	1893.26	
G14	1770.73	1464.6	1843.87	1600.16	1902.67	2164.0	1804.17	2043.66	1770.73	
G15	1652.66	1342.54	1717.59	1481.81	1783.3	2048.48	1680.95	1928.83	1652.66	
G16	1524.43	1222.15	1596.54	1360.44	1657.95	1932.4	1558.89	1814.98	1524.43	
G17	1401.07	1106.86	1472.58	1239.4	1540.85	1810.06	1435.29	1696.39	1401.07	
G18	1278.64	996.67	1358.08	1120.59	1417.11	1689.76	1315.69	1573.63	1278.64	
G19	1165.48	894.18	1236.53	1011.51	1295.66	1565.19	1199.8	1455.47	1165.48	
G20	1052.37	798.83	1122.12	909.2	1176.05	1442.9	1089.65	1334.52	1052.37	
G21	949.97	713.5	1013.18	816.31	1065.96	1322.88	980.72	1218.86	949.97	
G22	848.73	631.92	911.01	726.53	963.23	1211.95	880.96	1107.42	848.73	
G23	757.6	553.45	813.2	646.2	867.93	1096.93	785.19	1002.79	757.6	
G24	672.04	482.64	721.43	568.71	775.69	988.0	698.19	901.41	672.04	
G25	593.1	419.33	635.91	499.56	691.24	886.48	616.34	808.89	593.1	
G26	520.43	364.47	561.66	436.49	610.4	792.89	542.46	719.99	520.43	
G27	456.43	317.17	488.62	379.68	539.45	706.31	475.17	639.25	456.43	
G28	398.56	274.31	426.66	329.87	475.59	625.47	414.65	565.37	398.56	
G29	345.97	237.49	372.96	285.03	416.5	549.93	361.59	499.66	345.97	
G30	300.52	204.94	325.65	245.42	363.4	482.4	314.34	438.07	300.52	
G31	262.35	177.81	282.11	214.4	318.0	420.31	273.2	382.88	262.35	
G32	228.5	152.95	244.08	187.22	278.81	366.65	236.7	332.7	228.5	
G33	198.44	133.8	211.52	163.8	244.12	319.44	205.96	291.2	198.44	
G34	172.15	117.15	185.18	142.42	213.38	279.79	180.68	256.0	172.15	
G35	150.3	101.56	161.39	124.29	186.52	245.0	157.86	225.06	150.3	
G36	130.73	88.67	141.31	108.57	163.48	214.86	138.57	197.05	130.73	

C Range: 0 - 360 Deg

C Interval: 45.0 Deg

Test Speed: High

Temperature: 25

Operators: QC01

Test Date: 2024/12/19 17:20:57

G Range: 0 - 90 Deg

G Interval: 1.0 Deg

Test System: Huipu CPM-1600B Goniophotometer

Humidity: 60

Test Distance: 6.81 m

Remarks:

Report No.:

Test Time: 2024/12/19 17:20:57

LUMINOUS DISTRIBUTION INTENSITY DATA(Continue 1)

Gamma\C	C0	C45	C90	C135	C180	C225	C270	C315	C360	
G37	113.95	77.87	125.12	95.44	144.6	188.75	120.21	173.03	113.95	
G38	98.87	69.19	110.56	83.99	127.26	166.21	105.18	151.33	98.87	
G39	86.86	61.54	98.22	73.69	112.51	146.41	93.31	133.01	86.86	
G40	76.1	54.77	87.79	65.44	99.75	129.76	82.78	117.24	76.1	
G41	67.29	48.97	78.89	58.02	89.13	114.78	72.95	104.11	67.29	
G42	59.55	43.27	70.77	51.38	79.63	101.7	64.83	92.8	59.55	
G43	53.8	38.58	63.77	45.45	71.28	90.43	57.23	83.06	53.8	
G44	47.12	34.74	57.83	40.58	64.14	81.34	51.15	74.25	47.12	
G45	41.83	30.75	52.31	36.17	57.69	73.09	45.22	66.74	41.83	
G46	37.15	26.81	46.93	32.09	52.08	66.13	40.35	59.87	37.15	
G47	33.02	23.0	42.48	28.38	46.61	59.55	36.03	54.03	33.02	
G48	29.08	19.76	38.12	24.76	42.2	53.98	32.32	49.25	29.08	
G49	25.32	16.7	34.04	21.24	38.17	48.32	28.71	44.01	25.32	
G50	22.03	13.96	30.1	17.95	34.46	44.15	25.51	39.65	22.03	
G51	18.74	11.5	26.43	14.89	30.65	39.51	22.35	35.9	18.74	
G52	15.81	9.28	23.33	12.15	27.08	35.85	19.29	32.05	15.81	
G53	13.12	7.56	20.31	9.88	23.93	32.23	16.37	28.57	13.12	
G54	10.67	6.26	17.67	7.93	21.01	28.99	14.01	25.23	10.67	
G55	8.86	5.29	15.35	6.49	18.41	25.51	11.55	22.4	8.86	
G56	7.28	4.59	13.77	5.61	15.95	22.35	9.46	19.62	7.28	
G57	6.17	4.13	12.52	4.92	14.24	19.48	7.7	17.34	6.17	
G58	5.33	3.8	11.69	4.31	12.89	17.16	6.49	15.26	5.33	
G59	4.82	3.2	10.85	3.99	12.06	15.07	5.75	13.87	4.82	
G60	4.22	2.88	10.06	3.39	11.08	13.5	5.15	12.61	4.22	
G61	3.8	2.41	9.51	2.92	10.39	12.34	4.59	11.78	3.8	
G62	3.39	2.18	9.0	2.55	9.74	11.5	4.22	10.9	3.39	
G63	3.01	1.67	8.25	2.13	9.18	10.76	3.71	10.34	3.01	
G64	2.5	1.34	7.61	1.76	8.49	10.06	3.2	9.65	2.5	
G65	2.04	0.97	7.14	1.53	7.98	9.46	2.69	9.0	2.04	
G66	1.67	0.7	6.91	1.11	7.42	8.77	2.27	8.35	1.67	
G67	1.34	0.23	6.12	0.74	6.86	8.12	1.86	7.88	1.34	
G68	1.07	0.0	5.66	0.37	6.35	7.56	1.53	7.19	1.07	
G69	0.6	0.0	5.24	0.09	5.98	6.91	1.21	6.77	0.6	
G70	0.19	0.0	4.78	0.0	5.38	6.54	0.74	6.31	0.19	
G71	0.0	0.0	4.45	0.0	4.82	6.03	0.28	5.61	0.0	
G72	0.0	0.0	4.27	0.0	4.59	5.47	0.05	5.01	0.0	
G73	0.0	0.0	3.94	0.0	4.45	4.87	0.0	4.73	0.0	

C Range: 0 - 360 Deg
 C Interval: 45.0 Deg
 Test Speed: High
 Temperature: 25
 Operators: QC01
 Test Date: 2024/12/19 17:20:57

G Range: 0 - 90 Deg
 G Interval: 1.0 Deg
 Test System: Huipu CPM-1600B Goniophotometer
 Humidity: 60
 Test Distance: 6.81 m
 Remarks:

