

Report No.:

Test Time: 2025/5/8 18:03:59

LUMINAIRE PHOTOMETRIC TEST REPORT

Luminaire Property

Manufacturer: InBright
 Luminaire Type: IBSP112CT085H48-60°-10W
 Lamp Type:
 Luminous Width: 58 mm
 Luminous Length: 58 mm
 Luminous Height: 45 mm

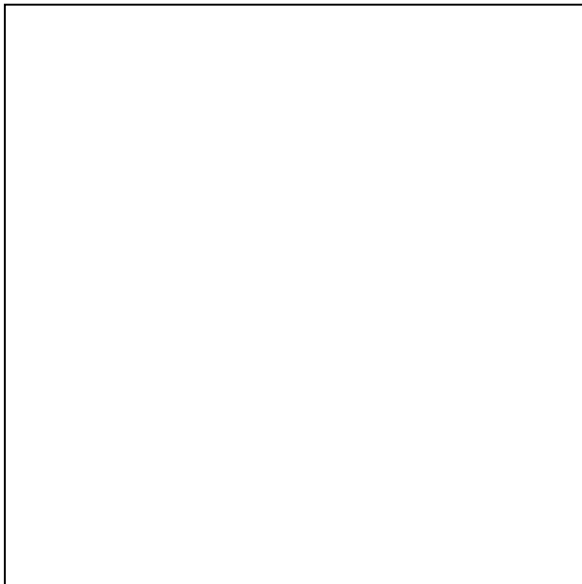
Voltage(V): 219.90 V
 Current(A): 0.0510 A
 Power(W): 10.48 W
 Power Factor: 0.9160
 Lamp Luminous Flux: 1022.58

Photometric Results

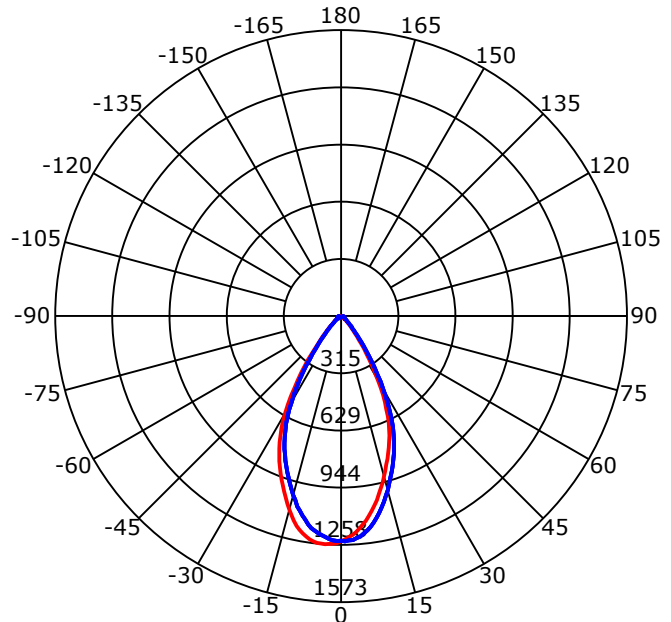
CIE Class: Direct
 Luminaire Luminous Flux: 1022.581 lm
 Downward Ratio: 100.00%
 Luminaire Efficacy Rating(LER): 97.57 lm/W
 Beam Angle(50%) C0-180,C90-270: 54.0,54.5
 Field Angle(10%) C0-180,C90-270: 82.0,83.2
 S/MH C0-180,C90-270: 0.849,0.849

Max. Intensity: 1258.03 cd
 Max.Intensity Angle: C=180 Gamma=4
 Upward Ratio: 0.00%
 Efficacy: 100.00%
 Center Intensity: 1238.68 cd
 Effective Luminous Flux: 917.51 lm
 ERP(ϕ use)(120deg): 994.63 lm

Picture of Luminaire



Luminous Intensity Distribution Curve



Beam Angle(50%) C0-180,C90-270: 54.0 deg,54.5 deg

C0-180 — C90-270 —

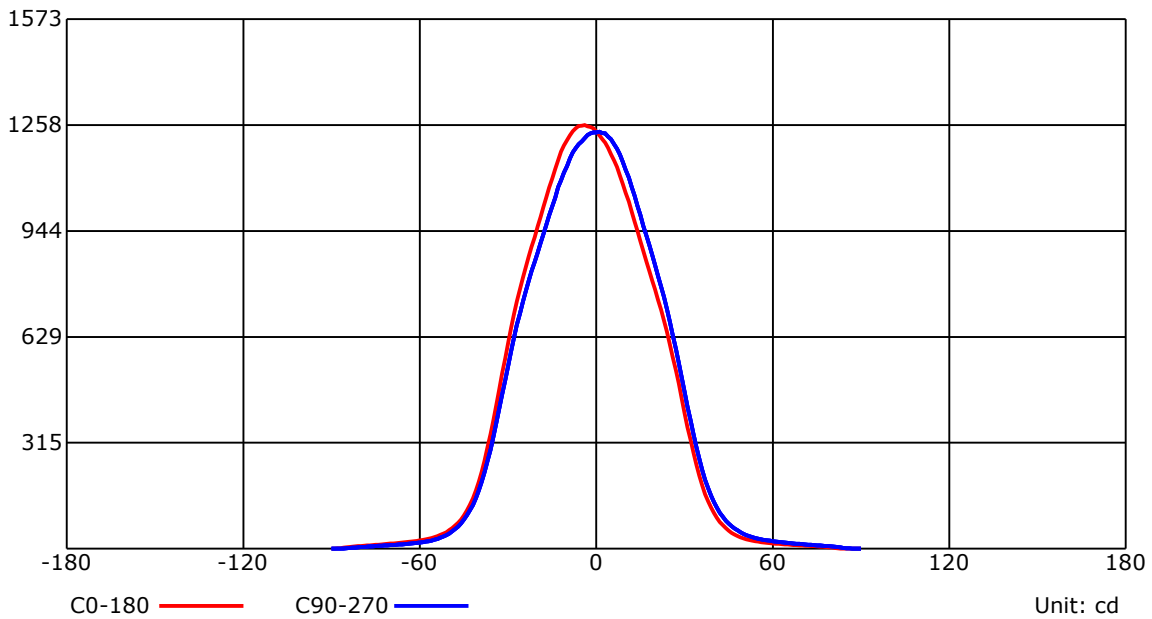
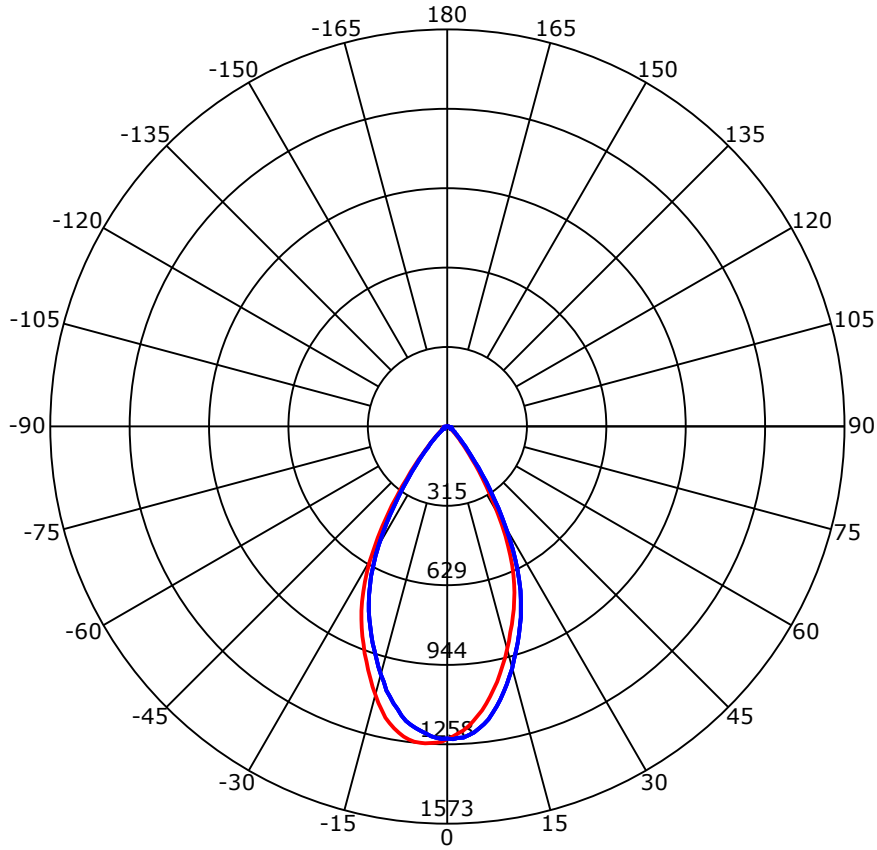
C Range: 0 - 360 Deg
 C Interval: 45.0 Deg
 Test Speed: High
 Temperature: 25
 Operators: QC01
 Test Date: 2025/5/8 18:03:59

G Range: 0 - 90 Deg
 G Interval: 1.0 Deg
 Test System: Huipu CPM-1600B Goniophotometer
 Humidity: 60
 Test Distance: 6.87 m
 Remarks:

Report No.:

Test Time: 2025/5/8 18:03:59

Luminous Intensity Distribution Curve



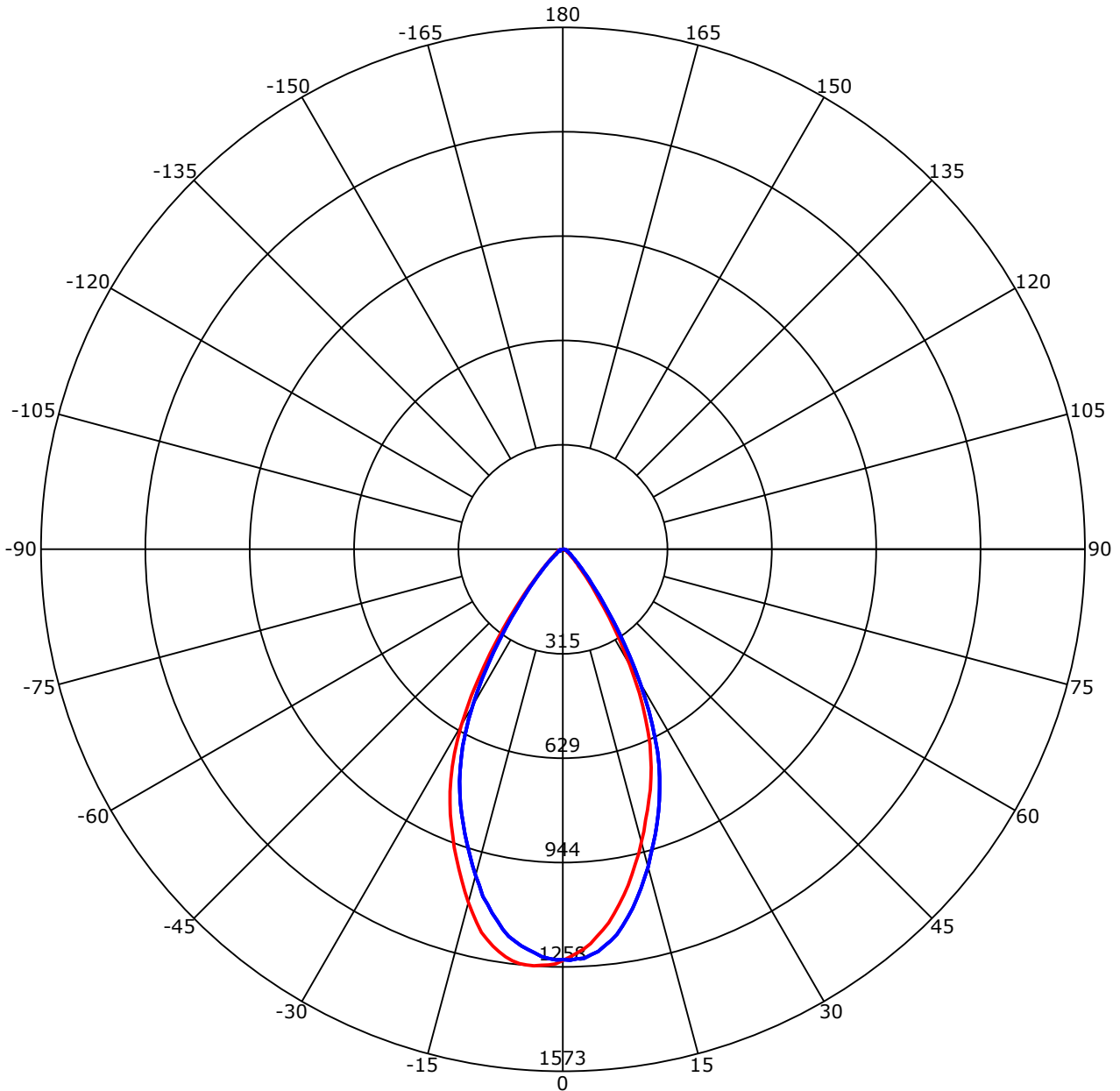
C Range: 0 - 360 Deg
 C Interval: 45.0 Deg
 Test Speed: High
 Temperature: 25
 Operators: QC01
 Test Date: 2025/5/8 18:03:59

G Range: 0 - 90 Deg
 G Interval: 1.0 Deg
 Test System: Huipu CPM-1600B Goniophotometer
 Humidity: 60
 Test Distance: 6.87 m
 Remarks:

Report No.:

Test Time: 2025/5/8 18:03:59

Luminous Intensity Distribution Curve



C0-180 — C90-270 —
 Unit: cd/klm

C Range: 0 - 360 Deg
 C Interval: 45.0 Deg
 Test Speed: High
 Temperature: 25
 Operators: QC01
 Test Date: 2025/5/8 18:03:59

G Range: 0 - 90 Deg
 G Interval: 1.0 Deg
 Test System: Huipu CPM-1600B Goniophotometer
 Humidity: 60
 Test Distance: 6.87 m
 Remarks:

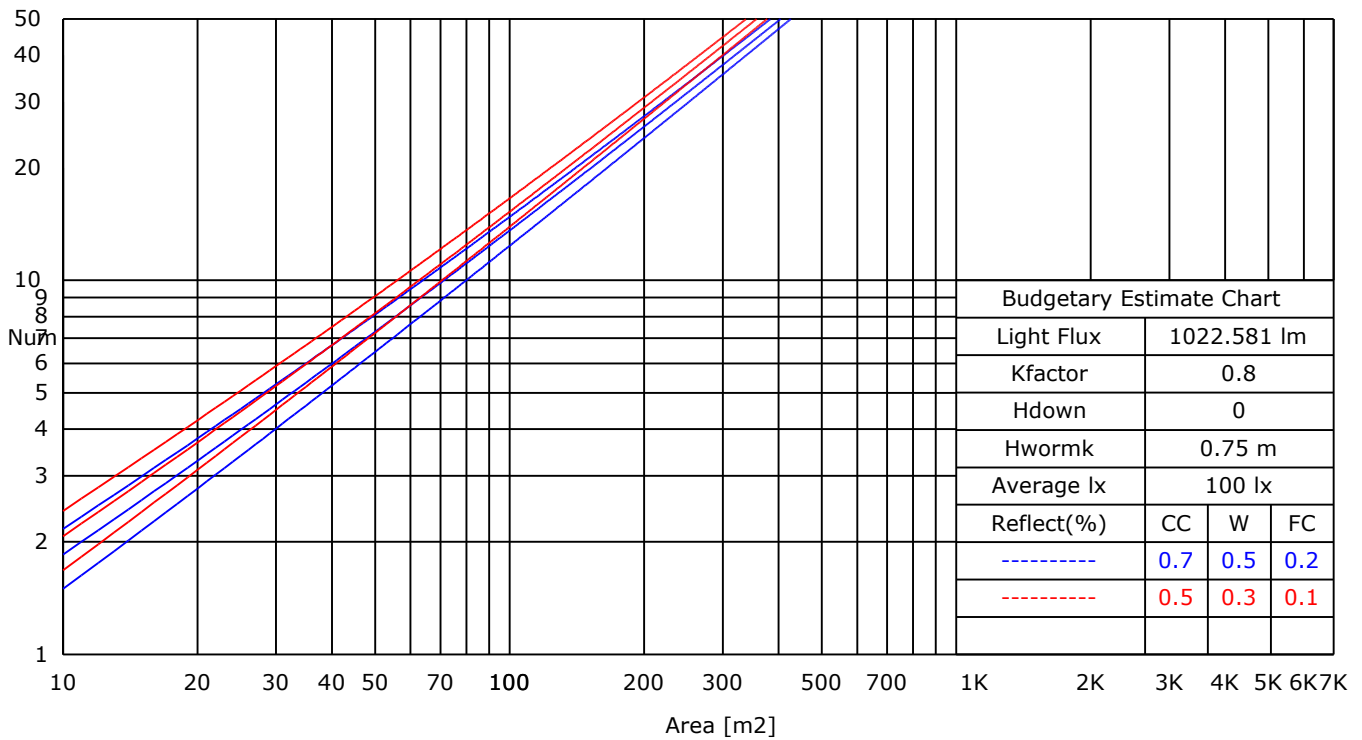
Report No.:

Test Time: 2025/5/8 18:03:59

UTILIZATION FACTORS TABLE

RHOCC	80			70			50			30			10			0
RHOW	50	30	10	50	30	10	50	30	10	50	30	10	50	30	10	0
RCR	COEFFICIENTS OF UTILIZATION FOR RHOFC=20															
0	1.19	1.19	1.19	1.16	1.16	1.16	1.11	1.11	1.11	1.06	1.06	1.06	1.02	1.02	1.02	1.00
1	1.05	1.04	1.02	1.04	1.02	1.01	1.00	0.98	0.96	0.96	0.93	0.91	0.89	0.87	0.85	0.80
2	1.00	0.98	0.97	0.99	0.97	0.95	0.96	0.93	0.91	0.91	0.89	0.86	0.86	0.83	0.80	0.76
3	0.95	0.94	0.92	0.94	0.92	0.90	0.91	0.89	0.86	0.88	0.84	0.82	0.83	0.80	0.77	0.72
4	0.91	0.89	0.88	0.90	0.88	0.86	0.87	0.84	0.82	0.84	0.81	0.78	0.80	0.76	0.73	0.69
5	0.87	0.85	0.84	0.86	0.84	0.83	0.84	0.81	0.79	0.81	0.77	0.75	0.77	0.73	0.70	0.66
6	0.84	0.82	0.81	0.83	0.81	0.79	0.81	0.78	0.75	0.78	0.74	0.72	0.75	0.71	0.67	0.64
7	0.80	0.79	0.78	0.80	0.78	0.76	0.78	0.75	0.73	0.75	0.72	0.69	0.72	0.68	0.65	0.61
8	0.78	0.76	0.75	0.77	0.75	0.73	0.75	0.72	0.70	0.73	0.69	0.66	0.70	0.66	0.63	0.59
9	0.75	0.74	0.73	0.74	0.72	0.71	0.72	0.69	0.68	0.70	0.67	0.64	0.68	0.64	0.60	0.57
10	0.72	0.71	0.70	0.72	0.70	0.69	0.70	0.67	0.65	0.68	0.64	0.62	0.66	0.62	0.58	0.55

LUMINAIRE BUDGETARY ESTIMATE DIAGRAM



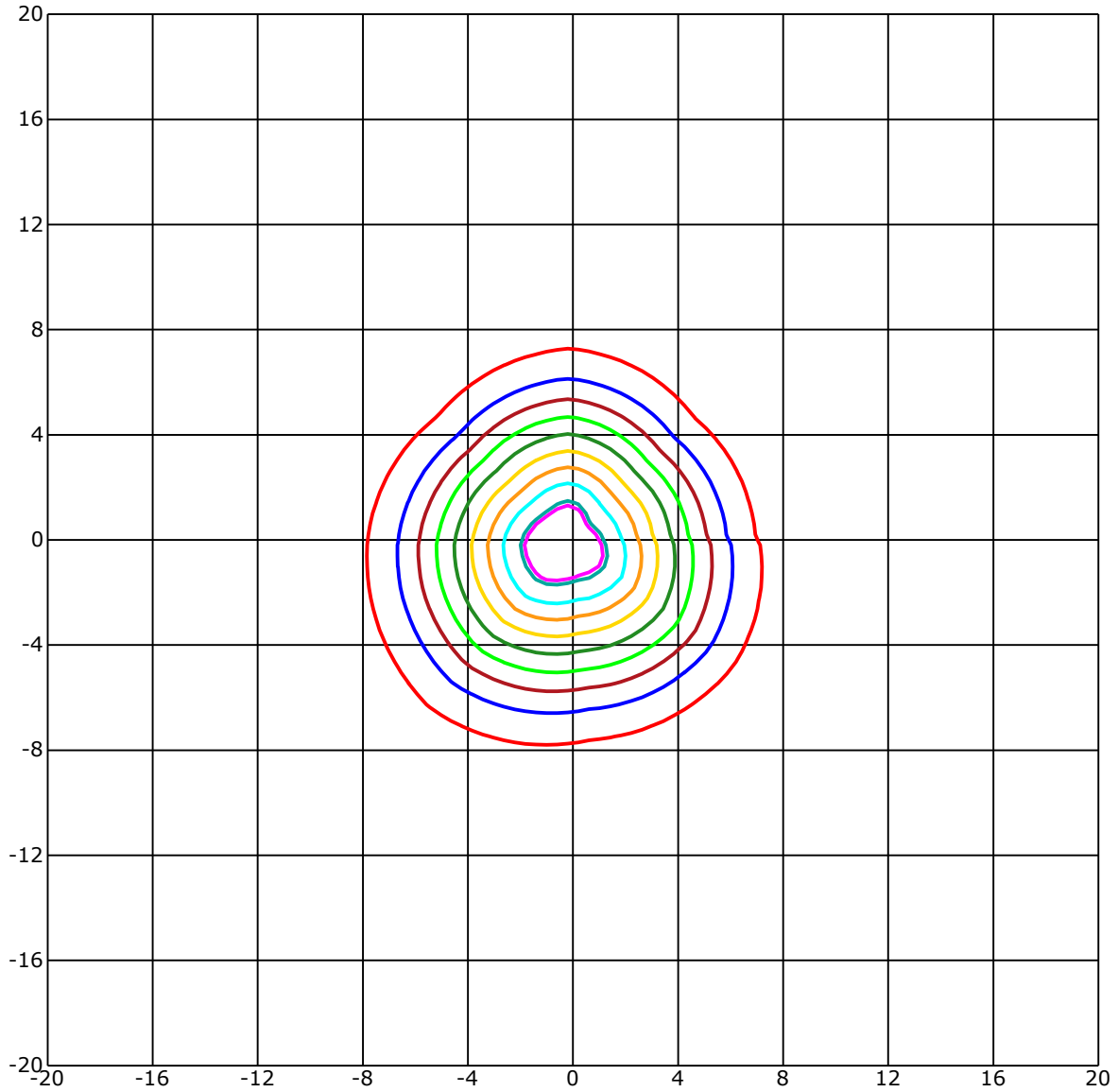
C Range: 0 - 360 Deg
 C Interval: 45.0 Deg
 Test Speed: High
 Temperature: 25
 Operators: QC01
 Test Date: 2025/5/8 18:03:59

G Range: 0 - 90 Deg
 G Interval: 1.0 Deg
 Test System: Huipu CPM-1600B Goniophotometer
 Humidity: 60
 Test Distance: 6.87 m
 Remarks:

Report No.:

Test Time: 2025/5/8 18:03:59

ISOLX DIAGRAM



Unit of illumination:lx Height of plane:10.0(m)/32.81(ft)

- | | |
|-------------------|------------------|
| — 11.503(92%Emax) | — 6.252(50%Emax) |
| — 11.253(90%Emax) | — 5.001(40%Emax) |
| — 10.003(80%Emax) | — 3.751(30%Emax) |
| — 8.753(70%Emax) | — 2.501(20%Emax) |
| — 7.502(60%Emax) | — 1.25(10%Emax) |

C Range: 0 - 360 Deg
 C Interval: 45.0 Deg
 Test Speed: High
 Temperature: 25
 Operators: QC01
 Test Date: 2025/5/8 18:03:59

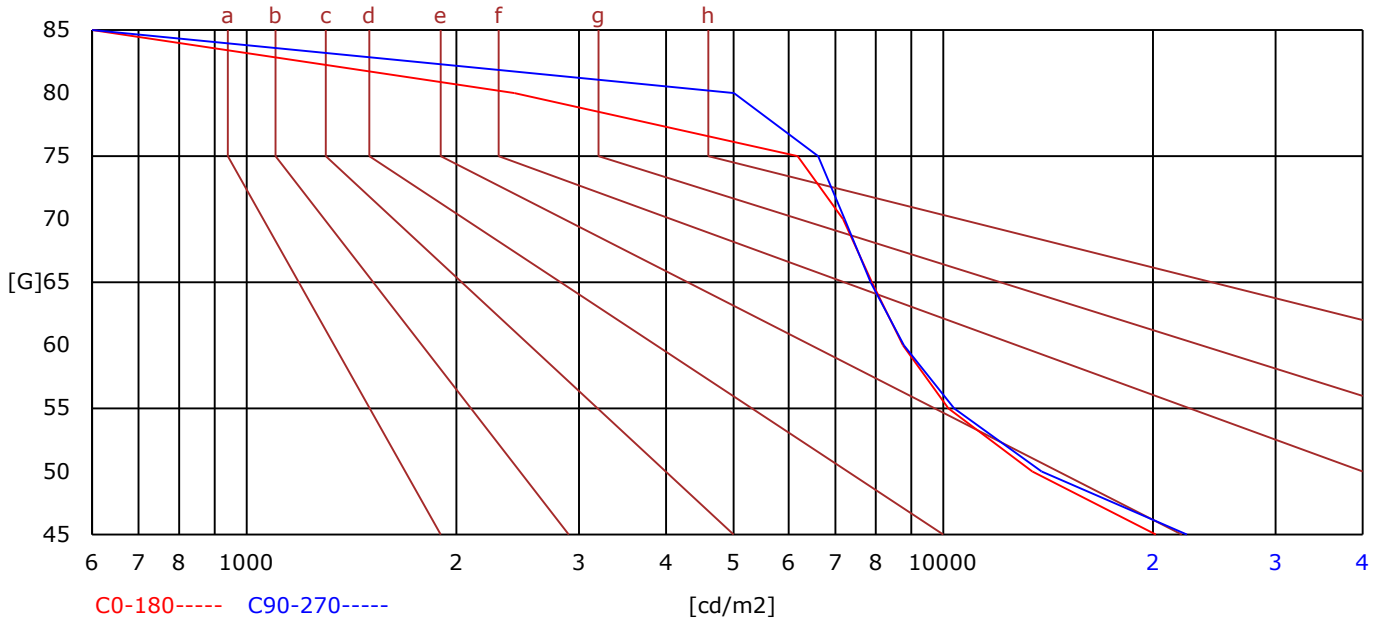
G Range: 0 - 90 Deg
 G Interval: 1.0 Deg
 Test System: Huipu CPM-1600B Goniophotometer
 Humidity: 60
 Test Distance: 6.87 m
 Remarks:

Report No.:

Test Time: 2025/5/8 18:03:59

BRIGHT LIMIT DIAGRAM

C/G	45	50	55	60	65	70	75	80	85
C0	20199	13423	10176	8755	7901	7179	6180	2424	0
C90	22361	13838	10371	8783	7868	7220	6613	5009	0
Dazzle	Quality	Illuminance	---	---	---	---	---	---	---
1.15	A	2000	1000	500	<=300				
1.5	B		2000	1000	500	<=300			
1.85	C			2000	1000	500	<=300		
2.2	D				2000	1000	500	<=300	
2.55	E					2000	1000	500	<=300
---	---	a	b	c	d	e	f	g	h



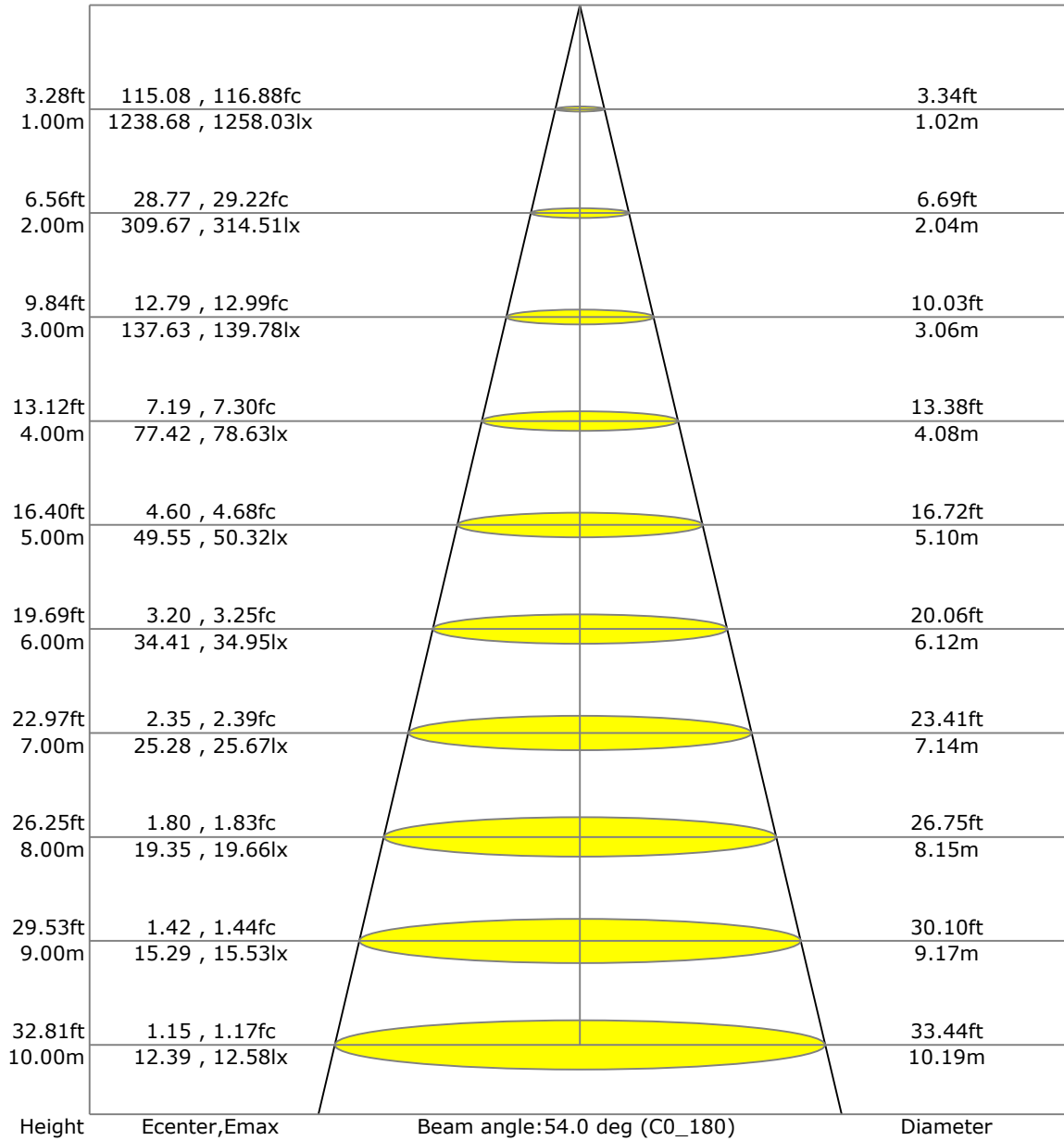
C Range: 0 - 360 Deg
 C Interval: 45.0 Deg
 Test Speed: High
 Temperature: 25
 Operators: QC01
 Test Date: 2025/5/8 18:03:59

G Range: 0 - 90 Deg
 G Interval: 1.0 Deg
 Test System: Huipu CPM-1600B Goniophotometer
 Humidity: 60
 Test Distance: 6.87 m
 Remarks:

Report No.:

Test Time: 2025/5/8 18:03:59

LX-DISTANCE DIAGRAM



C Range: 0 - 360 Deg
 C Interval: 45.0 Deg
 Test Speed: High
 Temperature: 25
 Operators: QC01
 Test Date: 2025/5/8 18:03:59

G Range: 0 - 90 Deg
 G Interval: 1.0 Deg
 Test System: Huipu CPM-1600B Goniophotometer
 Humidity: 60
 Test Distance: 6.87 m
 Remarks:

Report No.:

Test Time: 2025/5/8 18:03:59

UGR(Unified Glare Rating) TABLE

RHOCC	70	70	50	50	30	70	70	50	50	30
RHOW	50	30	50	30	30	50	30	50	30	30
RHOF	20	20	20	20	20	20	20	20	20	20
Room Size X	Viewed Endwise					Viewed Crosswise				
2H 2H	13.38	13.43	13.58	13.62	13.86	13.70	13.75	13.90	13.94	14.18
3H	13.41	13.46	13.61	13.65	13.90	13.71	13.76	13.91	13.95	14.20
4H	13.40	13.46	13.62	13.65	13.90	13.70	13.75	13.91	13.95	14.20
6H	13.39	13.44	13.61	13.64	13.89	13.68	13.73	13.90	13.93	14.19
8H	13.38	13.43	13.60	13.64	13.89	13.67	13.72	13.89	13.93	14.18
12H	13.37	13.42	13.59	13.63	13.88	13.66	13.71	13.88	13.92	14.17
4H 2H	13.98	14.04	14.19	14.23	14.48	14.55	14.60	14.76	14.79	15.04
3H	14.07	14.13	14.30	14.33	14.59	14.62	14.67	14.84	14.88	15.13
4H	14.09	14.14	14.31	14.35	14.61	14.62	14.67	14.85	14.88	15.14
6H	14.08	14.13	14.31	14.35	14.61	14.60	14.65	14.84	14.87	15.14
8H	14.06	14.11	14.31	14.34	14.60	14.59	14.64	14.83	14.86	15.13
12H	14.05	14.10	14.30	14.33	14.60	14.57	14.62	14.82	14.85	15.12
8H 4H	14.10	14.15	14.31	14.35	14.60	14.83	14.89	15.05	15.09	15.34
6H	14.20	14.25	14.46	14.49	14.76	14.94	14.99	15.20	15.23	15.50
8H	14.19	14.23	14.45	14.48	14.76	14.93	14.97	15.19	15.21	15.49
12H	14.17	14.21	14.44	14.47	14.75	14.91	14.95	15.18	15.20	15.48
12H 4H	14.21	14.25	14.45	14.48	14.75	14.99	15.04	15.24	15.27	15.54
6H	14.19	14.23	14.45	14.48	14.75	14.97	15.01	15.23	15.26	15.53

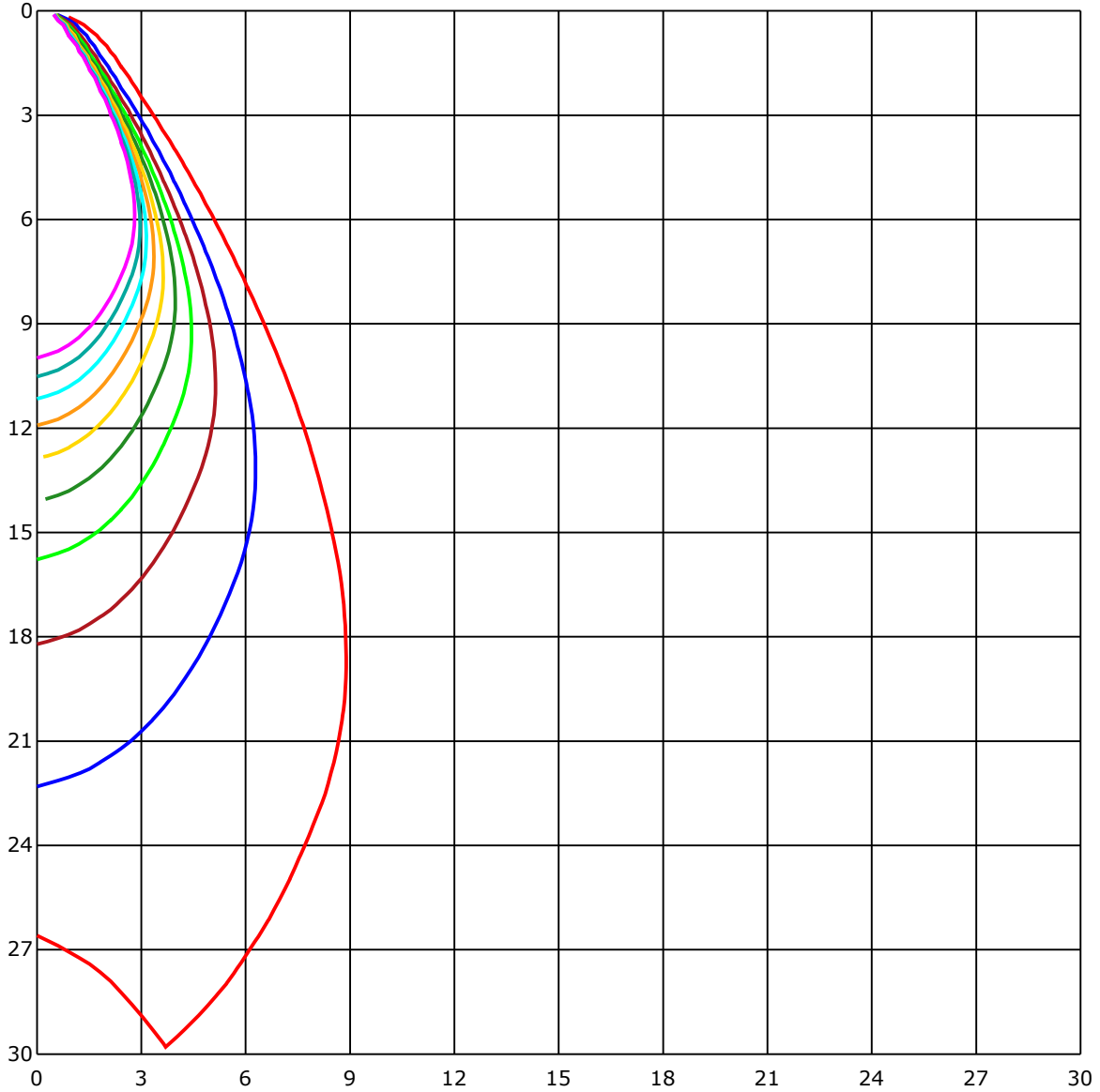
C Range: 0 - 360 Deg
 C Interval: 45.0 Deg
 Test Speed: High
 Temperature: 25
 Operators: QC01
 Test Date: 2025/5/8 18:03:59

G Range: 0 - 90 Deg
 G Interval: 1.0 Deg
 Test System: Huipu CPM-1600B Goniophotometer
 Humidity: 60
 Test Distance: 6.87 m
 Remarks:

Report No.:

Test Time: 2025/5/8 18:03:59

SPACE ISOLX DIAGRAM



Unit of illumination:lx

- | | |
|----------|---------|
| — 12.45 | — 6.225 |
| — 11.205 | — 4.98 |
| — 9.96 | — 3.735 |
| — 8.715 | — 2.49 |
| — 7.47 | — 1.245 |

C Range: 0 - 360 Deg
 C Interval: 45.0 Deg
 Test Speed: High
 Temperature: 25
 Operators: QC01
 Test Date: 2025/5/8 18:03:59

G Range: 0 - 90 Deg
 G Interval: 1.0 Deg
 Test System: Huipu CPM-1600B Goniophotometer
 Humidity: 60
 Test Distance: 6.87 m
 Remarks:

Report No.:

Test Time: 2025/5/8 18:03:59

LUMINOUS DISTRIBUTION INTENSITY DATA

Gamma\C	C0	C45	C90	C135	C180	C225	C270	C315	C360	
G0	1238.68	1219.0	1235.76	1243.4	1238.68	1219.0	1235.76	1243.4	1238.68	
G1	1227.64	1206.26	1238.12	1243.78	1248.59	1227.64	1236.65	1241.47	1227.64	
G2	1216.22	1194.37	1234.48	1239.77	1252.65	1237.6	1233.73	1237.79	1216.22	
G3	1205.46	1177.89	1233.4	1235.76	1254.73	1241.04	1228.44	1235.1	1205.46	
G4	1190.83	1160.81	1224.1	1227.88	1258.03	1245.1	1218.77	1225.94	1190.83	
G5	1171.47	1139.0	1216.08	1219.24	1256.48	1245.15	1209.94	1218.91	1171.47	
G6	1152.45	1120.22	1201.26	1204.65	1254.92	1243.97	1200.78	1205.55	1152.45	
G7	1133.1	1092.56	1187.52	1188.61	1248.83	1240.57	1189.36	1194.7	1133.1	
G8	1108.18	1068.68	1171.1	1168.22	1240.0	1235.71	1177.28	1179.64	1108.18	
G9	1083.22	1039.32	1148.49	1144.43	1227.31	1231.08	1158.92	1166.38	1083.22	
G10	1056.93	1013.98	1124.94	1119.13	1213.57	1220.94	1136.83	1146.84	1056.93	
G11	1030.73	984.62	1101.81	1092.0	1196.82	1206.4	1116.16	1128.43	1030.73	
G12	1000.48	955.27	1073.31	1064.15	1179.45	1191.58	1093.22	1105.07	1000.48	
G13	971.27	925.44	1047.68	1034.18	1153.87	1172.65	1073.54	1081.19	971.27	
G14	943.47	895.99	1017.57	1003.12	1128.15	1154.86	1041.92	1056.31	943.47	
G15	913.07	866.49	991.28	973.29	1100.35	1132.63	1017.47	1032.43	913.07	
G16	884.0	837.65	958.9	941.39	1072.74	1109.93	990.0	1003.55	884.0	
G17	852.56	807.54	929.35	910.33	1043.05	1083.12	961.45	976.74	852.56	
G18	825.0	777.52	901.46	878.38	1014.4	1058.86	933.93	948.04	825.0	
G19	795.79	743.68	872.1	847.37	984.67	1027.71	907.17	921.9	795.79	
G20	769.88	712.39	841.38	816.98	956.45	1001.33	878.81	893.63	769.88	
G21	739.15	676.76	810.61	785.21	925.58	974.85	851.81	866.77	739.15	
G22	708.9	641.31	777.24	751.19	897.12	945.83	824.15	841.52	708.9	
G23	676.52	602.47	746.18	718.34	867.34	916.99	795.22	816.03	676.52	
G24	644.24	562.63	711.73	679.78	836.0	890.09	765.01	787.06	644.24	
G25	607.14	520.91	674.11	640.6	804.9	860.73	733.63	759.63	607.14	
G26	568.58	480.23	634.28	599.26	770.91	830.67	699.41	729.81	568.58	
G27	529.88	438.51	593.12	557.73	734.19	799.04	665.05	700.07	529.88	
G28	490.52	398.25	551.35	512.13	695.82	764.87	626.11	663.82	490.52	
G29	446.01	357.85	509.02	465.83	655.09	729.1	586.19	626.73	446.01	
G30	402.45	319.43	466.02	419.25	611.96	692.24	543.24	586.99	402.45	
G31	360.82	282.9	422.74	375.17	565.56	649.81	500.95	544.09	360.82	
G32	322.5	250.1	380.69	333.02	519.87	608.65	457.67	499.53	322.5	
G33	284.97	219.84	339.58	293.85	472.96	565.56	415.47	454.08	284.97	
G34	249.77	193.46	301.68	256.14	427.23	523.89	373.61	409.29	249.77	
G35	217.01	169.11	267.75	223.05	382.53	479.24	332.79	365.73	217.01	
G36	188.36	147.87	234.05	191.62	340.67	435.16	294.04	323.06	188.36	

C Range: 0 - 360 Deg
 C Interval: 45.0 Deg
 Test Speed: High
 Temperature: 25
 Operators: QC01
 Test Date: 2025/5/8 18:03:59

G Range: 0 - 90 Deg
 G Interval: 1.0 Deg
 Test System: Huipu CPM-1600B Goniophotometer
 Humidity: 60
 Test Distance: 6.87 m
 Remarks:

Report No.:

Test Time: 2025/5/8 18:03:59

LUMINOUS DISTRIBUTION INTENSITY DATA(Continue 1)

Gamma\C	C0	C45	C90	C135	C180	C225	C270	C315	C360	
G37	162.12	129.27	204.6	164.76	299.65	392.06	258.69	283.37	162.12	
G38	140.41	114.26	179.11	141.4	261.23	351.99	226.45	246.56	140.41	
G39	121.58	100.2	157.02	122.15	227.58	312.63	198.09	214.09	121.58	
G40	105.67	88.26	137.96	105.53	197.99	276.39	172.13	184.87	105.67	
G41	91.42	77.59	121.58	91.37	172.13	243.35	149.43	159.67	91.42	
G42	79.39	68.58	106.57	79.15	149.14	213.52	129.46	137.77	79.39	
G43	69.38	60.79	94.02	69.05	129.51	185.81	113.18	119.5	69.38	
G44	61.12	54.13	83.26	60.51	113.04	162.31	98.88	103.69	61.12	
G45	53.57	48.05	74.52	53.19	99.11	142.49	86.42	91.18	53.57	
G46	47.06	43.19	66.93	46.49	87.17	126.11	75.23	79.81	47.06	
G47	41.96	38.7	60.41	41.34	77.26	111.48	65.89	70.56	41.96	
G48	37.38	34.83	54.56	36.81	68.67	98.31	58.1	62.44	37.38	
G49	33.7	31.48	48.99	33.18	61.26	87.17	51.59	55.6	33.7	
G50	30.68	29.03	44.37	29.92	54.98	77.83	45.4	49.37	30.68	
G51	28.03	26.48	40.64	27.42	49.13	69.38	40.45	44.79	28.03	
G52	25.77	24.5	37.33	24.97	44.74	62.3	36.01	40.83	25.77	
G53	23.74	22.61	34.55	23.03	40.68	56.16	32.19	37.38	23.74	
G54	22.09	21.14	31.95	21.33	37.29	50.93	29.17	34.31	22.09	
G55	20.72	19.63	29.97	20.01	34.41	45.5	26.57	32.05	20.72	
G56	19.49	18.45	27.99	18.69	31.91	41.39	24.4	29.78	19.49	
G57	18.31	17.32	26.24	17.6	29.5	37.95	22.56	28.18	18.31	
G58	17.32	16.52	24.83	16.47	27.66	34.93	20.96	26.67	17.32	
G59	16.47	15.57	23.6	15.53	26.01	32.38	19.59	25.25	16.47	
G60	15.67	14.73	22.09	14.77	24.59	30.16	18.27	23.88	15.67	
G61	14.96	13.92	21.0	13.97	23.22	28.03	17.32	22.7	14.96	
G62	14.25	13.17	20.06	13.22	21.85	26.34	16.24	21.66	14.25	
G63	13.64	12.55	19.21	12.6	20.72	24.5	15.43	20.81	13.64	
G64	13.07	11.99	18.27	11.89	19.82	23.17	14.58	19.87	13.07	
G65	12.37	11.23	17.46	11.19	18.93	21.8	13.83	19.21	12.37	
G66	11.75	10.62	16.57	10.67	17.93	20.72	13.03	18.55	11.75	
G67	11.19	9.96	15.76	10.01	17.18	19.63	12.37	17.7	11.19	
G68	10.67	9.39	14.96	9.49	16.38	18.69	11.8	16.94	10.67	
G69	10.05	8.78	14.25	9.06	15.57	17.89	11.19	16.38	10.05	
G70	9.58	8.26	13.4	8.31	15.01	16.94	10.52	15.57	9.58	
G71	9.01	7.65	12.74	7.79	14.06	16.0	10.19	14.87	9.01	
G72	8.68	7.08	12.08	7.32	13.4	15.15	9.44	14.21	8.68	
G73	8.02	6.51	11.47	6.89	12.84	14.4	8.97	13.55	8.02	

C Range: 0 - 360 Deg
 C Interval: 45.0 Deg
 Test Speed: High
 Temperature: 25
 Operators: QC01
 Test Date: 2025/5/8 18:03:59

G Range: 0 - 90 Deg
 G Interval: 1.0 Deg
 Test System: Huipu CPM-1600B Goniophotometer
 Humidity: 60
 Test Distance: 6.87 m
 Remarks:

