

Report No.:

Test Time: 2024/5/22 16:21:59

LUMINAIRE PHOTOMETRIC TEST REPORT

Luminaire Property

Manufacturer: InBright
 Luminaire Type: IBSP101CT075H74-15°-10.6W
 Lamp Type:
 Luminous Width: 68 mm
 Luminous Length: 68 mm
 Luminous Height: 71 mm

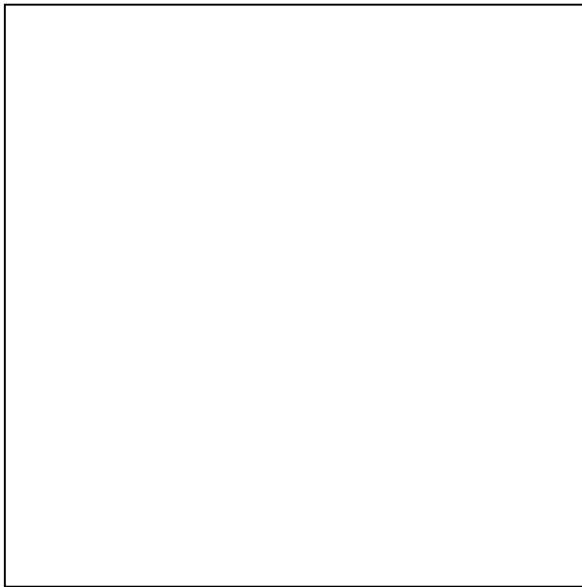
Voltage(V): 220.00 V
 Current(A): 0.0520 A
 Power(W): 10.62 W
 Power Factor: 0.9180
 Lamp Luminous Flux: 1173.83

Photometric Results

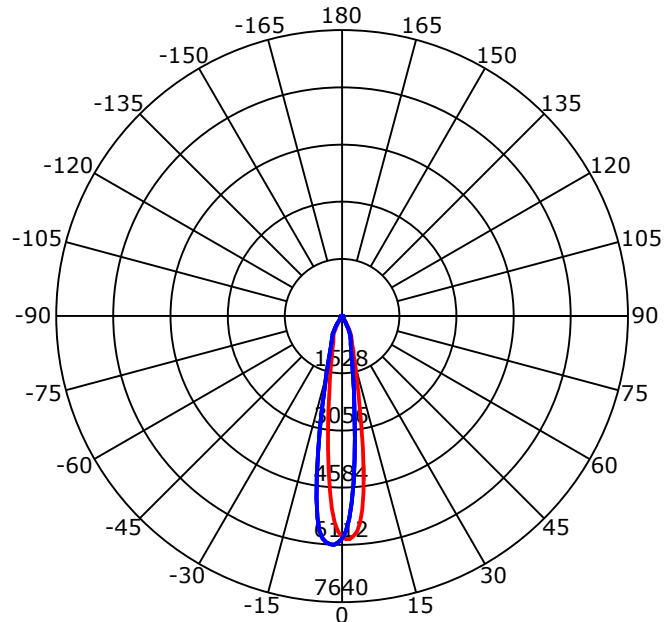
CIE Class: Direct
 Luminaire Luminous Flux: 1173.833 lm
 Downward Ratio: 100.00%
 Luminaire Efficacy Rating(LER): 110.53 lm/W
 Beam Angle(50%) C0-180,C90-270: 17.2,17.6
 Field Angle(10%) C0-180,C90-270: 46.8,47.1
 S/MH C0-180,C90-270: 0.317,0.353

Max. Intensity: 6112.27 cd
 Max.Intensity Angle: C=270 Gamma=2
 Upward Ratio: 0.00%
 Efficacy: 100.00%
 Center Intensity: 5909.50 cd
 Effective Luminous Flux: 864.22 lm
 ERP(ϕ use)(120deg): 1129.99 lm

Picture of Luminaire



Luminous Intensity Distribution Curve



Beam Angle(50%) C0-180,C90-270: 17.2 deg,17.6 deg

C0-180 — C90-270 —

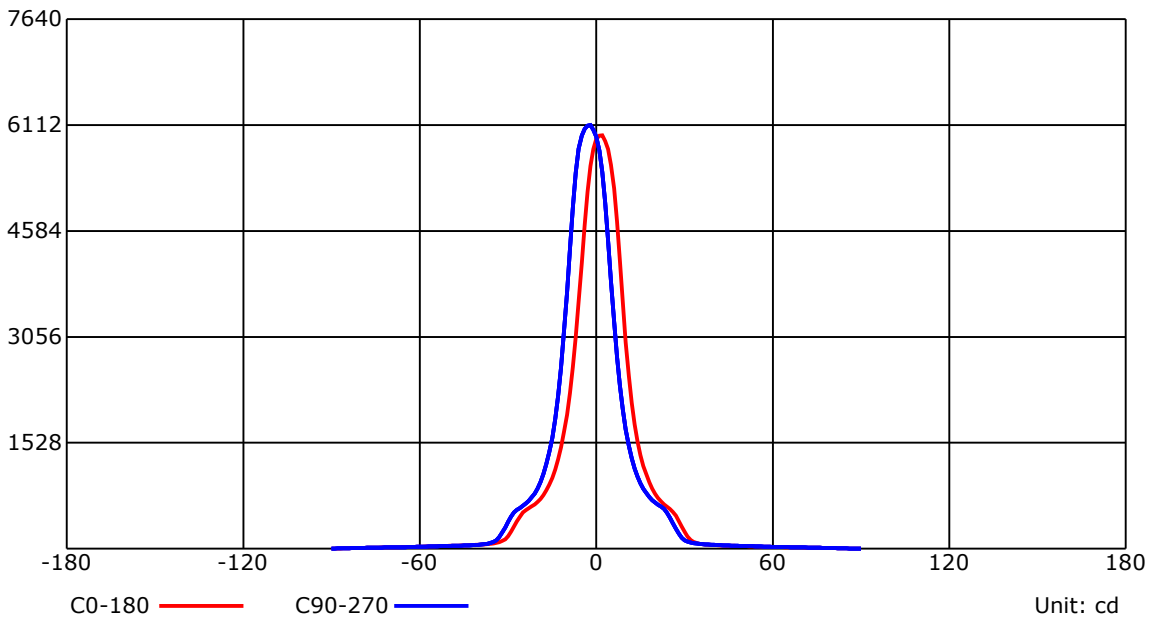
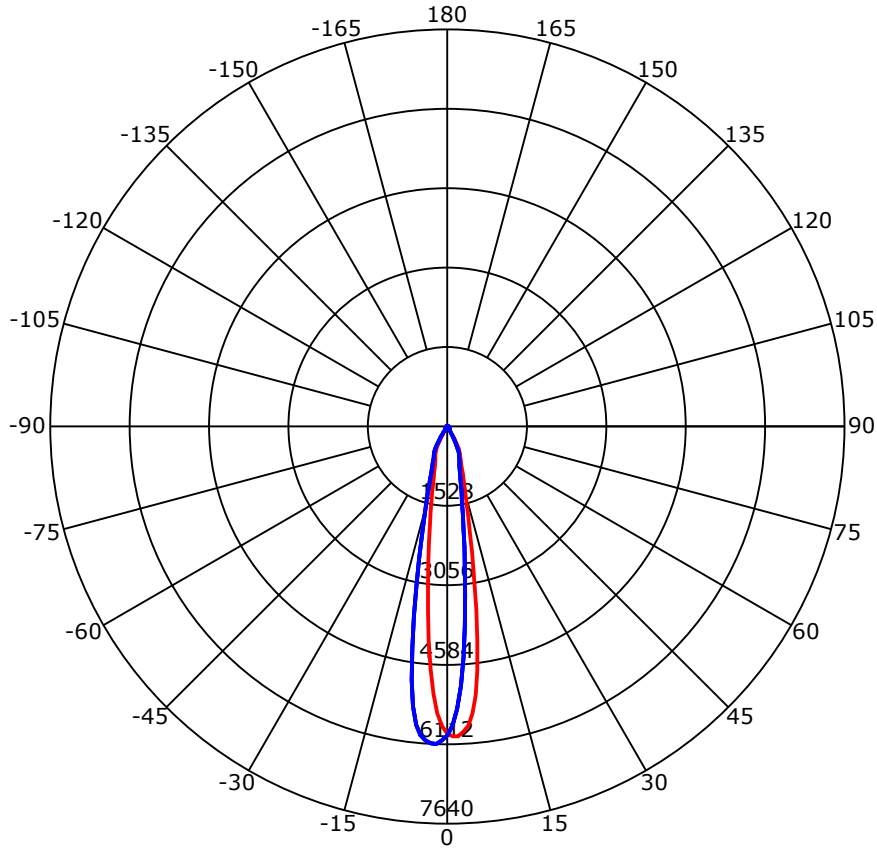
C Range: 0 - 360 Deg
 C Interval: 45.0 Deg
 Test Speed: High
 Temperature: 25
 Operators: QC01
 Test Date: 2024/5/22 16:21:59

G Range: 0 - 90 Deg
 G Interval: 1.0 Deg
 Test System: Huipu CPM-1600B Goniophotometer
 Humidity: 60
 Test Distance: 6.7 m
 Remarks:

Report No.:

Test Time: 2024/5/22 16:21:59

Luminous Intensity Distribution Curve



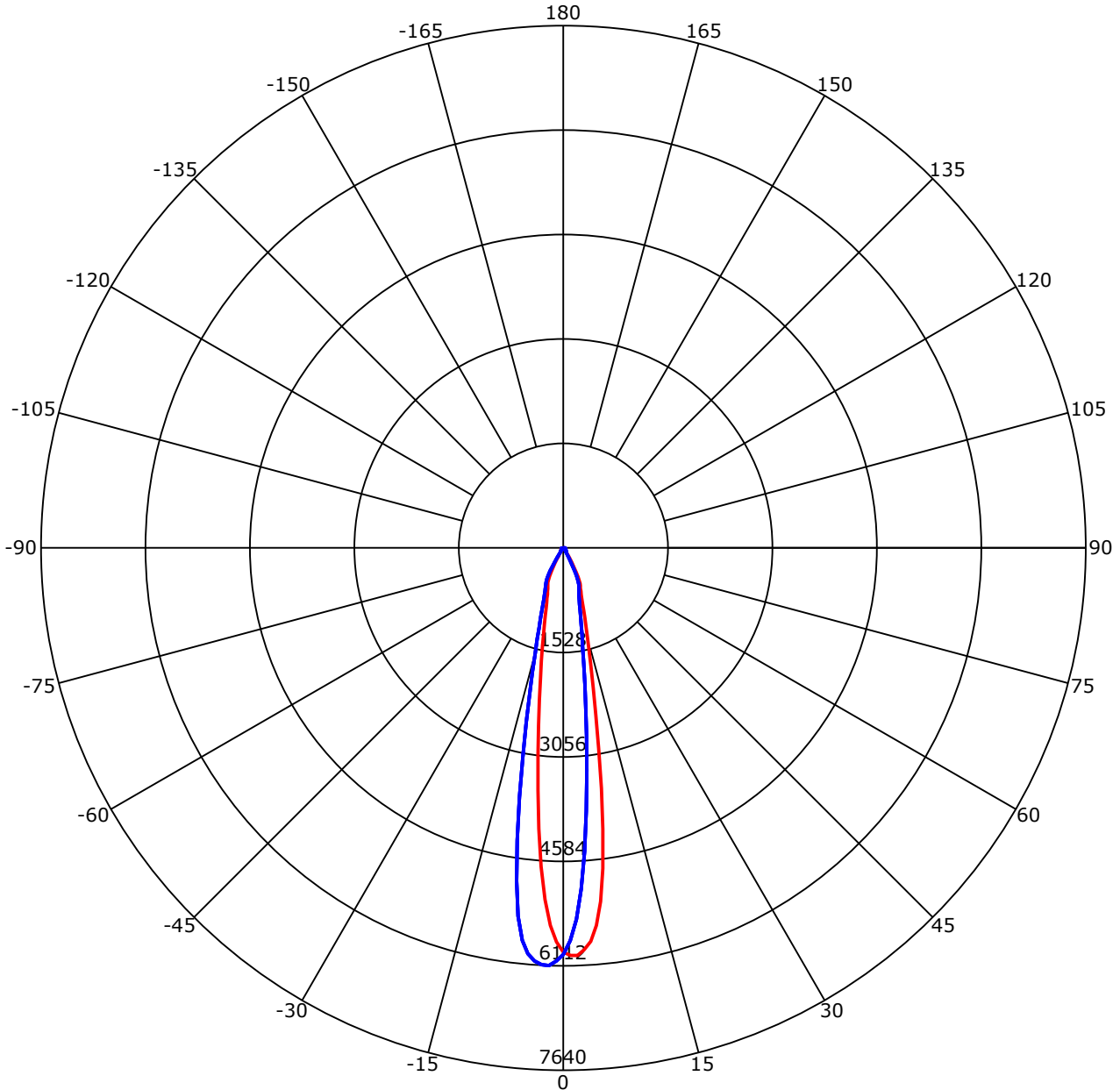
C Range: 0 - 360 Deg
 C Interval: 45.0 Deg
 Test Speed: High
 Temperature: 25
 Operators: QC01
 Test Date: 2024/5/22 16:21:59

G Range: 0 - 90 Deg
 G Interval: 1.0 Deg
 Test System: Huipu CPM-1600B Goniophotometer
 Humidity: 60
 Test Distance: 6.7 m
 Remarks:

Report No.:

Test Time: 2024/5/22 16:21:59

Luminous Intensity Distribution Curve



C0-180 — C90-270 —
 Unit: cd/klm

C Range: 0 - 360 Deg
 C Interval: 45.0 Deg
 Test Speed: High
 Temperature: 25
 Operators: QC01
 Test Date: 2024/5/22 16:21:59

G Range: 0 - 90 Deg
 G Interval: 1.0 Deg
 Test System: Huipu CPM-1600B Goniophotometer
 Humidity: 60
 Test Distance: 6.7 m
 Remarks:

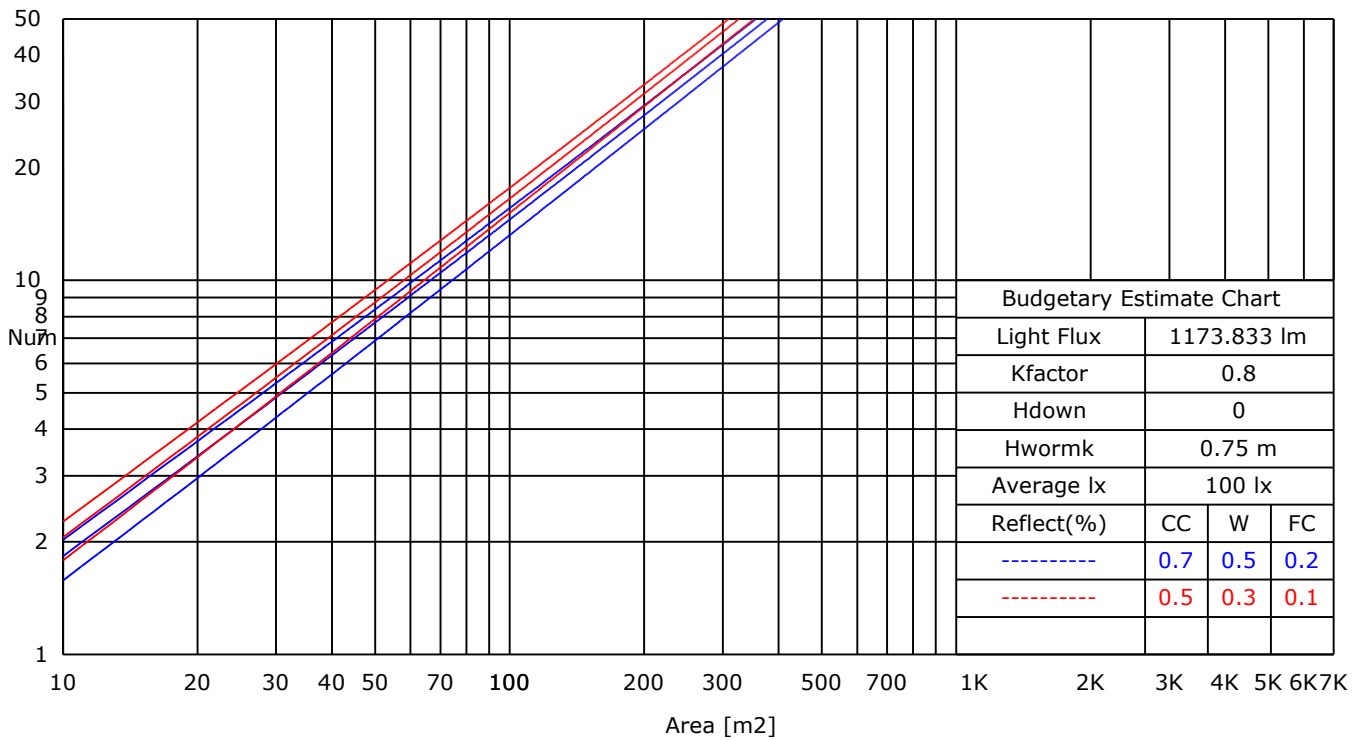
Report No.:

Test Time: 2024/5/22 16:21:59

UTILIZATION FACTORS TABLE

RHOCC	80			70			50			30			10			0
RHOW	50	30	10	50	30	10	50	30	10	50	30	10	50	30	10	0
RCR	COEFFICIENTS OF UTILIZATION FOR RHOFC=20															
0	1.19	1.19	1.19	1.16	1.16	1.16	1.11	1.11	1.11	1.06	1.06	1.06	1.02	1.02	1.02	1.00
1	0.88	0.84	0.81	0.87	0.83	0.80	0.85	0.81	0.77	0.81	0.77	0.73	0.76	0.72	0.68	0.63
2	0.81	0.78	0.75	0.81	0.77	0.74	0.79	0.75	0.71	0.76	0.72	0.68	0.72	0.68	0.63	0.58
3	0.77	0.74	0.72	0.76	0.73	0.70	0.75	0.71	0.68	0.73	0.68	0.64	0.70	0.65	0.60	0.56
4	0.73	0.71	0.69	0.73	0.70	0.68	0.72	0.68	0.65	0.70	0.66	0.62	0.68	0.62	0.58	0.54
5	0.71	0.68	0.67	0.71	0.68	0.65	0.70	0.66	0.63	0.68	0.63	0.60	0.66	0.60	0.56	0.52
6	0.68	0.66	0.65	0.68	0.65	0.64	0.67	0.63	0.61	0.66	0.61	0.58	0.64	0.59	0.54	0.51
7	0.66	0.64	0.63	0.66	0.64	0.62	0.65	0.62	0.59	0.64	0.60	0.56	0.62	0.57	0.53	0.50
8	0.65	0.63	0.62	0.64	0.62	0.60	0.64	0.60	0.58	0.62	0.58	0.55	0.61	0.56	0.52	0.48
9	0.63	0.61	0.60	0.63	0.60	0.59	0.62	0.59	0.56	0.61	0.57	0.53	0.59	0.54	0.51	0.47
10	0.62	0.60	0.59	0.61	0.59	0.58	0.61	0.57	0.55	0.59	0.55	0.52	0.58	0.53	0.49	0.46

LUMINAIRE BUDGETARY ESTIMATE DIAGRAM



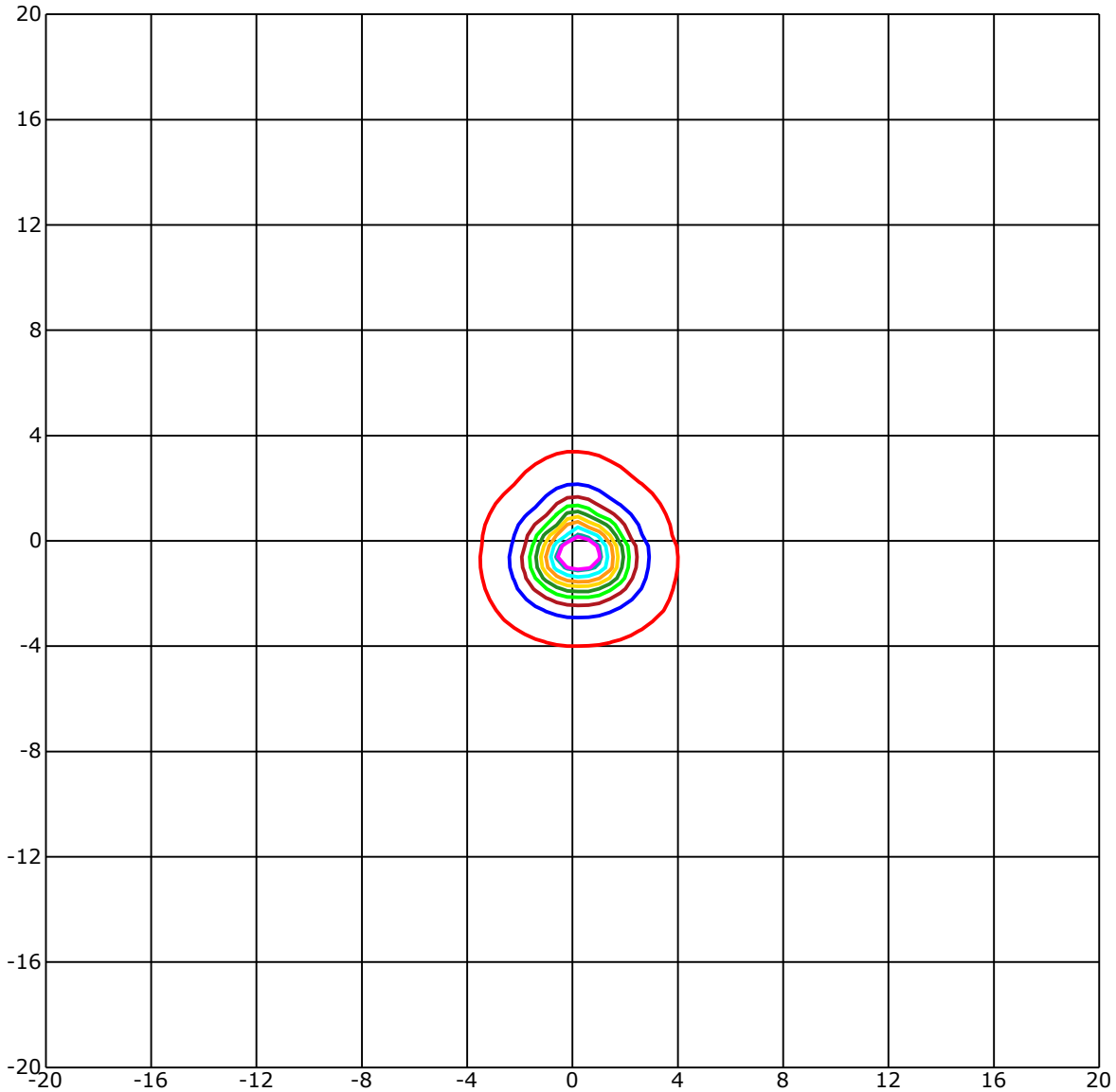
C Range: 0 - 360 Deg
 C Interval: 45.0 Deg
 Test Speed: High
 Temperature: 25
 Operators: QC01
 Test Date: 2024/5/22 16:21:59

G Range: 0 - 90 Deg
 G Interval: 1.0 Deg
 Test System: Huipu CPM-1600B Goniophotometer
 Humidity: 60
 Test Distance: 6.7 m
 Remarks:

Report No.:

Test Time: 2024/5/22 16:21:59

ISOLX DIAGRAM



Unit of illumination:lx Height of plane:10.0(m)/32.81(ft)

- | | |
|-------------------|-------------------|
| — 56.13(92%Emax) | — 30.506(50%Emax) |
| — 54.91(90%Emax) | — 24.404(40%Emax) |
| — 48.809(80%Emax) | — 18.303(30%Emax) |
| — 42.708(70%Emax) | — 12.202(20%Emax) |
| — 36.607(60%Emax) | — 6.101(10%Emax) |

C Range: 0 - 360 Deg
 C Interval: 45.0 Deg
 Test Speed: High
 Temperature: 25
 Operators: QC01
 Test Date: 2024/5/22 16:21:59

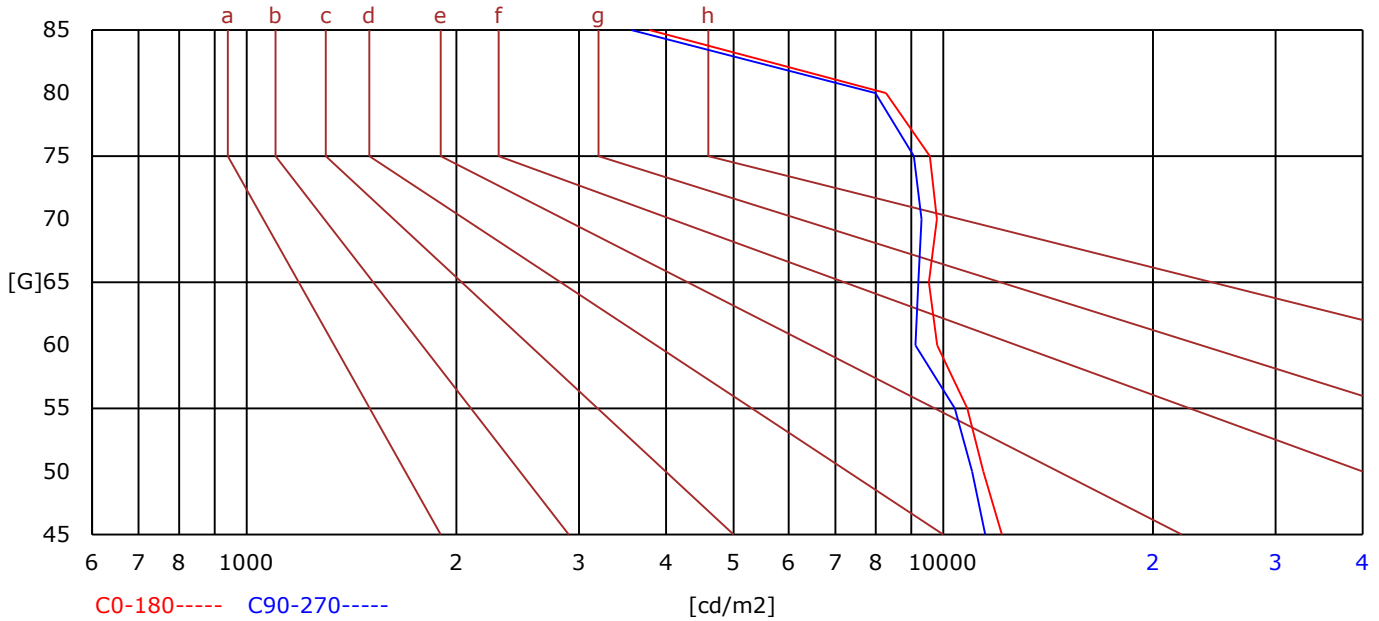
G Range: 0 - 90 Deg
 G Interval: 1.0 Deg
 Test System: Huipu CPM-1600B Goniophotometer
 Humidity: 60
 Test Distance: 6.7 m
 Remarks:

Report No.:

Test Time: 2024/5/22 16:21:59

BRIGHT LIMIT DIAGRAM

C/G	45	50	55	60	65	70	75	80	85
C0	12137	11418	10832	9805	9533	9793	9565	8274	3787
C90	11491	10995	10392	9126	9211	9310	9077	7995	3564
Dazzle	Quality	Illuminance	---	---	---	---	---	---	---
1.15	A	2000	1000	500	<=300				
1.5	B		2000	1000	500	<=300			
1.85	C			2000	1000	500	<=300		
2.2	D				2000	1000	500	<=300	
2.55	E					2000	1000	500	<=300
---	---	a	b	c	d	e	f	g	h



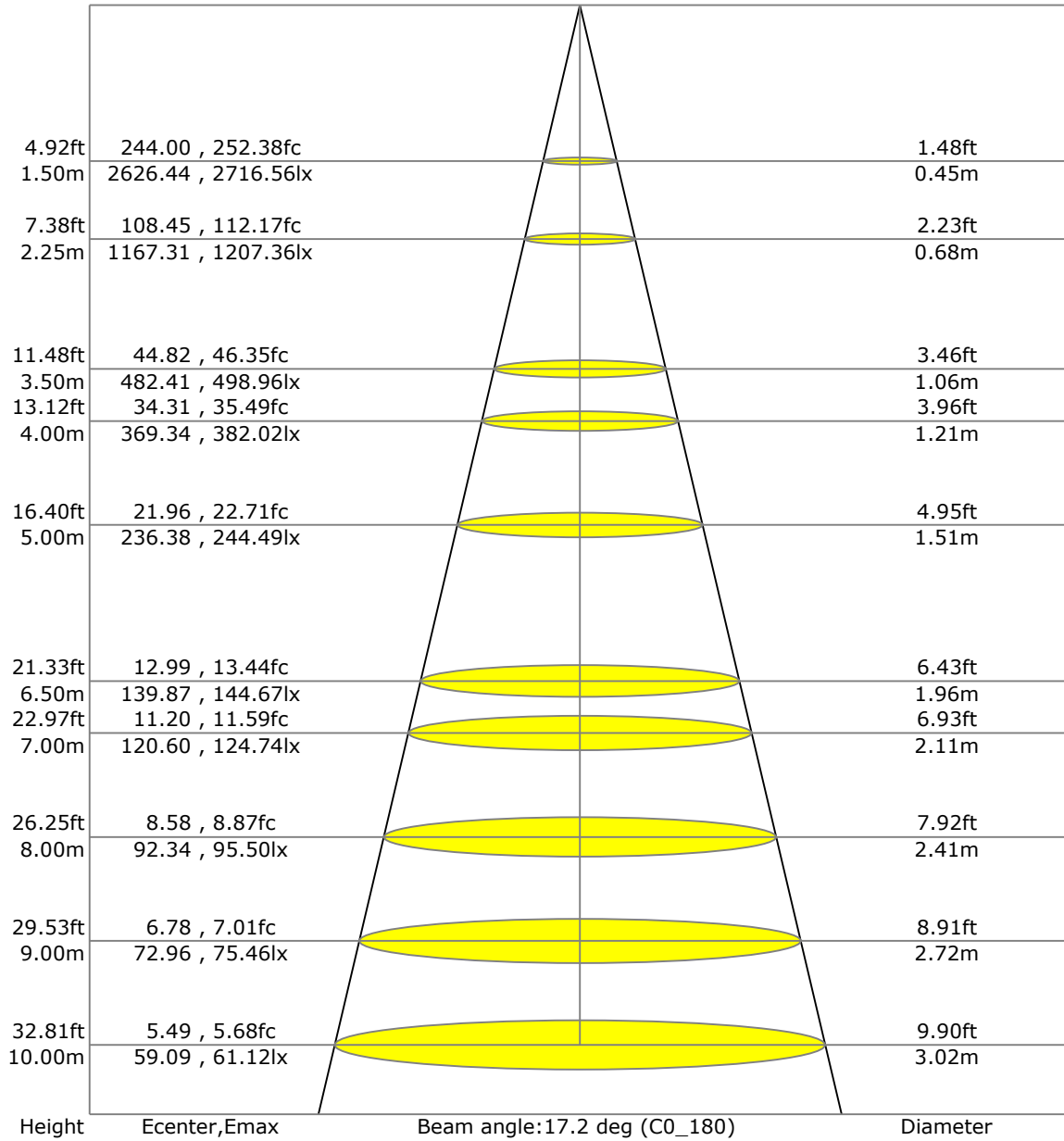
C Range: 0 - 360 Deg
 C Interval: 45.0 Deg
 Test Speed: High
 Temperature: 25
 Operators: QC01
 Test Date: 2024/5/22 16:21:59

G Range: 0 - 90 Deg
 G Interval: 1.0 Deg
 Test System: Huipu CPM-1600B Goniophotometer
 Humidity: 60
 Test Distance: 6.7 m
 Remarks:

Report No.:

Test Time: 2024/5/22 16:21:59

LX-DISTANCE DIAGRAM



C Range: 0 - 360 Deg
 C Interval: 45.0 Deg
 Test Speed: High
 Temperature: 25
 Operators: QC01
 Test Date: 2024/5/22 16:21:59

G Range: 0 - 90 Deg
 G Interval: 1.0 Deg
 Test System: Huipu CPM-1600B Goniophotometer
 Humidity: 60
 Test Distance: 6.7 m
 Remarks:

Report No.:

Test Time: 2024/5/22 16:21:59

UGR(Unified Glare Rating) TABLE

RHOCC	70	70	50	50	30	70	70	50	50	30
RHOW	50	30	50	30	30	50	30	50	30	30
RHOF	20	20	20	20	20	20	20	20	20	20
Room Size X	Viewed Endwise					Viewed Crosswise				
2H 2H	10.11	10.18	10.31	10.37	10.61	10.18	10.24	10.38	10.43	10.68
3H	10.29	10.36	10.50	10.55	10.80	10.35	10.41	10.55	10.61	10.85
4H	10.33	10.40	10.54	10.59	10.84	10.38	10.45	10.59	10.64	10.89
6H	10.33	10.40	10.55	10.60	10.85	10.38	10.44	10.59	10.65	10.90
8H	10.32	10.39	10.54	10.59	10.84	10.37	10.44	10.59	10.64	10.89
12H	10.31	10.38	10.53	10.58	10.84	10.36	10.43	10.58	10.63	10.89
4H 2H	12.48	12.55	12.69	12.74	12.99	12.63	12.70	12.84	12.90	13.15
3H	12.84	12.91	13.06	13.12	13.37	12.98	13.05	13.20	13.25	13.51
4H	12.93	13.00	13.16	13.22	13.48	13.06	13.13	13.29	13.35	13.61
6H	12.97	13.03	13.20	13.25	13.52	13.09	13.16	13.33	13.38	13.65
8H	12.96	13.03	13.21	13.26	13.52	13.09	13.15	13.33	13.38	13.65
12H	12.95	13.02	13.20	13.25	13.52	13.08	13.14	13.33	13.37	13.64
8H 4H	13.21	13.27	13.43	13.48	13.73	13.37	13.44	13.59	13.64	13.90
6H	13.92	13.99	14.18	14.23	14.50	14.06	14.13	14.32	14.37	14.64
8H	13.93	13.99	14.19	14.24	14.52	14.07	14.13	14.33	14.38	14.66
12H	13.92	13.98	14.19	14.23	14.52	14.06	14.12	14.33	14.37	14.65
12H 4H	14.00	14.06	14.25	14.30	14.57	14.17	14.24	14.42	14.47	14.74
6H	14.09	14.15	14.35	14.39	14.67	14.26	14.32	14.53	14.57	14.85

C Range: 0 - 360 Deg
 C Interval: 45.0 Deg
 Test Speed: High
 Temperature: 25
 Operators: QC01
 Test Date: 2024/5/22 16:21:59

G Range: 0 - 90 Deg
 G Interval: 1.0 Deg
 Test System: Huipu CPM-1600B Goniophotometer
 Humidity: 60
 Test Distance: 6.7 m
 Remarks:

Report No.:

Test Time: 2024/5/22 16:21:59

ZONAL LUMINOUS FLUX TABLE

Gamma [deg]	Imean [cd]	Zonal Flux [lm]	Sum Flux [lm]	Zonal Flux [%]	Sum Flux [%]
0	5833.50	0.00	0.00	0.00	0.00
5	5117.97	126.08	126.08	10.74	10.74
10	3099.74	259.55	385.62	22.11	32.85
15	1465.58	218.08	603.70	18.58	51.43
20	836.19	160.40	764.10	13.66	65.09
25	578.79	135.12	899.22	11.51	76.61
30	305.90	98.15	997.37	8.36	84.97
35	99.74	43.96	1041.32	3.74	88.71
40	59.19	22.22	1063.55	1.89	90.60
45	47.96	18.82	1082.36	1.60	92.21
50	41.07	17.35	1099.71	1.48	93.69
55	35.06	16.01	1115.72	1.36	95.05
60	29.04	14.27	1129.99	1.22	96.26
65	23.13	12.02	1142.01	1.02	97.29
70	19.37	10.32	1152.33	0.88	98.17
75	15.76	8.83	1161.17	0.75	98.92
80	11.37	6.82	1167.99	0.58	99.50
85	6.37	4.30	1172.28	0.37	99.87
90	1.52	1.55	1173.83	0.13	100.00

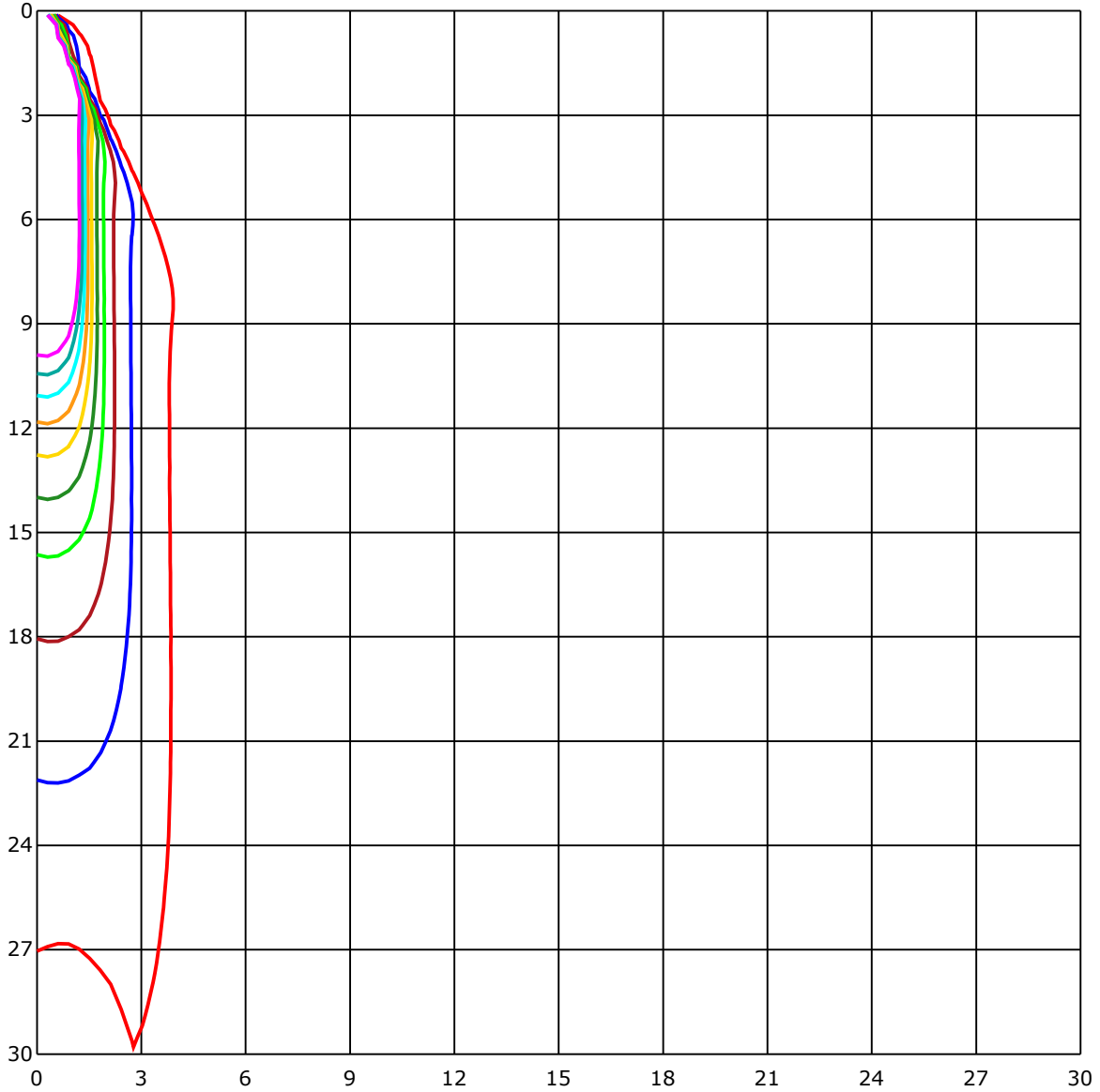
C Range: 0 - 360 Deg
 C Interval: 45.0 Deg
 Test Speed: High
 Temperature: 25
 Operators: QC01
 Test Date: 2024/5/22 16:21:59

G Range: 0 - 90 Deg
 G Interval: 1.0 Deg
 Test System: Huipu CPM-1600B Goniophotometer
 Humidity: 60
 Test Distance: 6.7 m
 Remarks:

Report No.:

Test Time: 2024/5/22 16:21:59

SPACE ISOLX DIAGRAM



Unit of illumination:lx

- | | |
|----------|---------|
| — 60.399 | — 30.2 |
| — 54.359 | — 24.16 |
| — 48.32 | — 18.12 |
| — 42.28 | — 12.08 |
| — 36.24 | — 6.04 |

C Range: 0 - 360 Deg
 C Interval: 45.0 Deg
 Test Speed: High
 Temperature: 25
 Operators: QC01
 Test Date: 2024/5/22 16:21:59

G Range: 0 - 90 Deg
 G Interval: 1.0 Deg
 Test System: Huipu CPM-1600B Goniophotometer
 Humidity: 60
 Test Distance: 6.7 m
 Remarks:

Report No.:

Test Time: 2024/5/22 16:21:59

LUMINOUS DISTRIBUTION INTENSITY DATA

Gamma\C	C0	C45	C90	C135	C180	C225	C270	C315	C360	
G0	5909.5	5872.87	5947.03	5604.61	5909.5	5872.87	5947.03	5604.61	5909.5	
G1	5961.03	5704.94	5745.11	5199.83	5764.28	5961.17	6043.85	5869.19	5961.03	
G2	5964.4	5415.84	5435.19	4675.11	5523.49	5976.39	6112.27	6001.08	5964.4	
G3	5880.5	5029.25	4994.01	4078.62	5150.36	5960.4	6104.73	6046.28	5880.5	
G4	5768.1	4508.89	4451.07	3473.45	4670.85	5906.94	6056.83	6107.6	5768.1	
G5	5540.55	3925.14	3861.75	2917.81	4122.25	5675.44	5960.05	6089.37	5540.55	
G6	5198.85	3347.18	3277.06	2461.36	3564.85	5388.42	5769.89	5994.21	5198.85	
G7	4724.31	2819.41	2766.71	2096.9	3056.47	4971.97	5424.15	5860.43	4724.31	
G8	4153.99	2395.51	2352.01	1801.12	2621.58	4405.19	4921.83	5630.73	4153.99	
G9	3562.29	2047.16	2008.47	1550.28	2247.06	3816.91	4323.81	5241.94	3562.29	
G10	2975.44	1751.47	1721.04	1357.7	1932.25	3274.32	3699.88	4733.79	2975.44	
G11	2489.38	1506.87	1484.74	1204.67	1677.85	2788.16	3117.07	4134.37	2489.38	
G12	2102.06	1313.53	1304.37	1073.99	1461.44	2371.72	2612.01	3523.82	2102.06	
G13	1792.55	1156.73	1157.58	967.24	1288.61	2025.08	2204.91	2957.76	1792.55	
G14	1547.09	1030.99	1042.08	874.86	1142.72	1735.54	1872.99	2478.38	1547.09	
G15	1351.77	929.49	944.35	798.5	1020.75	1501.26	1599.57	2095.06	1351.77	
G16	1194.21	846.27	863.95	740.46	922.53	1313.84	1384.95	1781.46	1194.21	
G17	1068.07	776.24	798.1	691.98	840.21	1164.63	1219.93	1542.91	1068.07	
G18	958.81	724.35	744.32	652.16	771.3	1043.2	1078.98	1352.9	958.81	
G19	865.52	678.96	700.6	619.8	717.93	941.7	962.22	1202.83	865.52	
G20	789.7	643.23	667.96	587.66	674.11	858.7	869.29	1073.77	789.7	
G21	731.66	610.86	635.1	559.82	638.07	787.86	796.71	969.76	731.66	
G22	681.03	576.3	605.03	525.39	608.84	734.45	739.65	883.7	681.03	
G23	639.64	540.61	571.99	477.41	585.55	689.96	688.84	814.89	639.64	
G24	606.06	481.71	517.94	408.05	557.17	651.58	650.5	757.34	606.06	
G25	574.14	408.01	447.42	334.7	523.01	621.46	620.11	709.44	574.14	
G26	534.1	329.99	369.98	260.54	464.66	595.42	588.42	668.95	534.1	
G27	475.52	252.96	289.0	192.04	394.67	566.38	558.25	636.63	475.52	
G28	400.28	183.02	216.91	135.16	320.87	531.77	521.22	600.9	400.28	
G29	321.14	127.85	157.07	101.32	247.75	474.49	460.89	556.73	321.14	
G30	247.03	99.07	120.57	85.43	181.18	404.5	388.93	489.03	247.03	
G31	177.36	84.57	101.59	74.02	134.85	326.75	308.17	412.36	177.36	
G32	125.74	73.89	89.2	65.85	109.98	252.82	232.17	329.63	125.74	
G33	98.8	66.35	79.9	61.05	94.18	185.17	168.92	250.53	98.8	
G34	83.85	61.54	74.02	57.06	82.42	136.33	121.47	181.22	83.85	
G35	72.41	57.64	68.95	53.87	74.92	111.64	96.29	133.77	72.41	
G36	65.31	54.81	65.14	51.08	69.8	96.38	83.27	109.85	65.31	

C Range: 0 - 360 Deg

C Interval: 45.0 Deg

Test Speed: High

Temperature: 25

Operators: QC01

Test Date: 2024/5/22 16:21:59

G Range: 0 - 90 Deg

G Interval: 1.0 Deg

Test System: Huipu CPM-1600B Goniophotometer

Humidity: 60

Test Distance: 6.7 m

Remarks:

Report No.:

Test Time: 2024/5/22 16:21:59

LUMINOUS DISTRIBUTION INTENSITY DATA(Continue 1)

Gamma\C	C0	C45	C90	C135	C180	C225	C270	C315	C360	
G37	61.32	52.03	61.77	49.15	65.23	85.52	72.77	93.78	61.32	
G38	57.95	50.28	59.17	46.95	61.95	77.7	65.9	82.87	57.95	
G39	55.08	48.08	56.65	45.56	58.99	71.91	60.74	76.54	55.08	
G40	52.84	46.37	54.86	43.9	56.61	67.34	57.14	71.87	52.84	
G41	50.59	44.8	52.66	42.51	54.63	63.61	54.0	67.65	50.59	
G42	48.62	43.36	51.04	41.25	52.84	60.42	51.62	64.33	48.62	
G43	46.33	42.02	49.2	39.86	51.13	57.59	49.65	61.41	46.33	
G44	44.58	40.94	47.72	38.65	49.74	55.3	47.63	59.17	44.58	
G45	43.32	39.68	45.79	37.57	48.17	53.24	45.83	56.61	43.32	
G46	42.11	38.52	44.4	36.81	46.42	51.71	44.49	54.27	42.11	
G47	41.07	37.44	42.87	35.78	44.98	50.64	43.23	52.48	41.07	
G48	40.0	36.23	41.84	34.61	43.59	49.11	42.15	50.82	40.0	
G49	38.78	34.88	40.45	33.71	42.6	47.72	41.03	49.38	38.78	
G50	37.62	33.94	39.37	32.68	41.57	45.83	39.73	47.99	37.62	
G51	36.72	32.77	38.11	31.87	40.18	44.44	38.34	45.88	36.72	
G52	35.51	31.83	36.99	31.2	38.96	43.45	37.21	44.58	35.51	
G53	34.43	30.97	36.05	29.85	38.11	42.02	36.05	43.18	34.43	
G54	33.04	29.67	34.7	28.86	36.85	40.54	35.01	41.79	33.04	
G55	31.78	28.73	33.4	27.56	35.87	39.37	33.8	40.72	31.78	
G56	30.84	27.65	32.28	26.26	34.52	38.47	32.72	39.59	30.84	
G57	29.9	26.13	30.93	25.09	32.9	37.26	31.74	38.16	29.9	
G58	28.59	25.09	29.63	23.75	31.51	36.18	30.88	36.85	28.59	
G59	27.52	23.75	28.15	22.58	30.17	34.83	29.72	35.64	27.52	
G60	26.13	22.67	26.62	21.1	28.64	33.31	28.68	34.12	26.13	
G61	24.91	21.1	25.14	20.2	27.29	31.87	27.38	32.99	24.91	
G62	23.75	20.51	24.38	19.57	25.5	30.39	25.9	31.51	23.75	
G63	22.49	19.93	23.61	19.08	24.51	28.91	24.51	30.17	22.49	
G64	21.23	19.3	22.98	18.49	23.79	27.38	23.16	28.68	21.23	
G65	20.74	18.63	22.22	18.0	23.3	25.72	21.5	27.29	20.74	
G66	19.93	18.18	21.73	17.42	22.4	24.78	20.69	25.81	19.93	
G67	19.66	17.42	20.83	16.83	21.86	24.06	20.11	24.82	19.66	
G68	18.94	16.7	20.34	16.12	21.1	23.43	19.62	24.2	18.94	
G69	18.32	16.07	19.39	15.53	20.42	22.76	18.99	23.48	18.32	
G70	17.6	15.49	18.72	14.72	19.66	22.09	18.45	22.94	17.6	
G71	17.01	14.86	17.82	14.14	19.03	21.41	17.87	22.13	17.01	
G72	16.52	14.05	17.06	13.15	18.36	20.74	17.42	21.59	16.52	
G73	15.58	13.15	16.34	12.57	17.55	19.93	16.65	20.74	15.58	

C Range: 0 - 360 Deg
 C Interval: 45.0 Deg
 Test Speed: High
 Temperature: 25
 Operators: QC01
 Test Date: 2024/5/22 16:21:59

G Range: 0 - 90 Deg
 G Interval: 1.0 Deg
 Test System: Huipu CPM-1600B Goniophotometer
 Humidity: 60
 Test Distance: 6.7 m
 Remarks:

Report No.:

Test Time: 2024/5/22 16:21:59

LUMINOUS DISTRIBUTION INTENSITY DATA(Continue 2)

Gamma\C	C0	C45	C90	C135	C180	C225	C270	C315	C360	
G74	14.77	12.43	15.44	11.63	16.56	19.21	15.89	20.11	14.77	
G75	13.96	11.45	14.36	10.86	15.76	18.45	15.26	19.21	13.96	
G76	13.02	10.5	13.51	10.01	14.95	17.64	14.54	18.49	13.02	
G77	12.21	9.65	12.43	9.16	14.05	16.92	13.87	17.64	12.21	
G78	11.22	8.93	11.67	8.26	13.06	16.03	13.02	16.74	11.22	
G79	10.28	7.63	10.64	7.27	12.25	14.9	12.17	15.85	10.28	
G80	9.43	6.64	9.65	6.42	11.27	14.19	11.31	14.81	9.43	
G81	8.21	5.66	8.57	5.43	10.15	13.02	10.46	13.83	8.21	
G82	7.14	4.62	7.63	4.44	9.16	12.25	9.56	13.02	7.14	
G83	6.02	3.5	6.51	3.37	8.21	11.13	8.57	11.94	6.02	
G84	4.85	2.51	5.52	2.42	7.09	10.23	7.68	10.68	4.85	
G85	3.68	1.53	4.31	1.44	6.15	9.11	6.64	9.47	3.68	
G86	2.2	0.72	3.32	0.36	4.89	8.04	5.7	8.17	2.2	
G87	1.08	0.0	2.02	0.0	3.46	6.78	4.76	6.64	1.08	
G88	0.04	0.0	0.76	0.0	1.71	5.39	3.77	4.89	0.04	
G89	0.0	0.0	0.49	0.0	0.58	4.22	3.01	3.86	0.0	
G90	0.0	0.0	0.0	0.0	0.0	4.22	2.21	3.86	0.0	

C Range: 0 - 360 Deg
 C Interval: 45.0 Deg
 Test Speed: High
 Temperature: 25
 Operators: QC01
 Test Date: 2024/5/22 16:21:59

G Range: 0 - 90 Deg
 G Interval: 1.0 Deg
 Test System: Huipu CPM-1600B Goniophotometer
 Humidity: 60
 Test Distance: 6.7 m
 Remarks: