

Report No.:

Test Time: 2024/10/15 16:23:13

## LUMINAIRE PHOTOMETRIC TEST REPORT

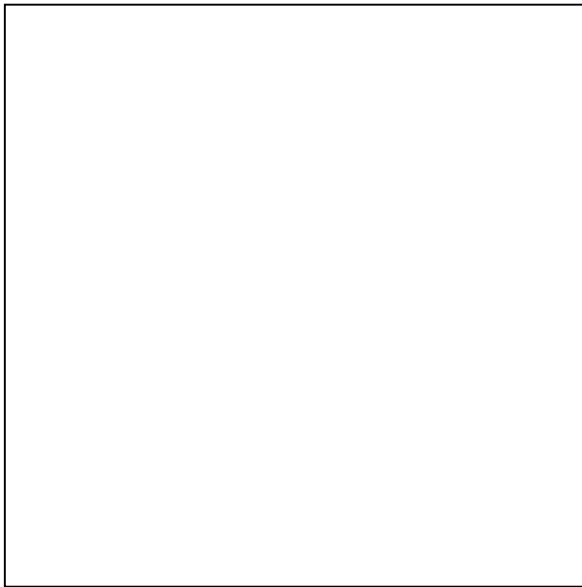
### Luminaire Property

Manufacturer: InBright	Voltage(V): 219.90 V
Luminaire Type: IBSP155CT085H95-15°-8W	Current(A): 0.0380 A
Lamp Type:	Power(W): 7.89 W
Luminous Width: 65 mm	Power Factor: 0.9330
Luminous Length: 65 mm	Lamp Luminous Flux: 659.65
Luminous Height: 70 mm	

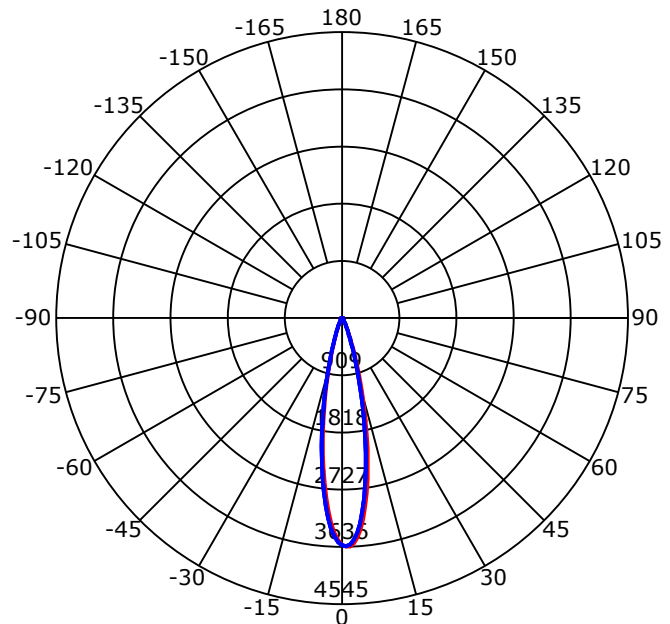
### Photometric Results

CIE Class: Direct	Max. Intensity: 3635.84 cd
Luminaire Luminous Flux: 659.6474 lm	Max.Intensity Angle: C=225 Gamma=0
Downward Ratio: 100.00%	Upward Ratio: 0.00%
Luminaire Efficacy Rating(LER): 83.61 lm/W	Efficacy: 100.00%
Beam Angle(50%) C0-180,C90-270: 21.9,21.5	Center Intensity: 3604.58 cd
Field Angle(10%) C0-180,C90-270: 41.0,40.5	Effective Luminous Flux: 545.04 lm
S/MH C0-180,C90-270: 0.389,0.389	ERP( $\phi$ use)(120deg): 656.82 lm

Picture of Luminaire



Luminous Intensity Distribution Curve



Beam Angle(50%) C0-180,C90-270: 21.9 deg,21.5 deg

C0-180 — C90-270 —

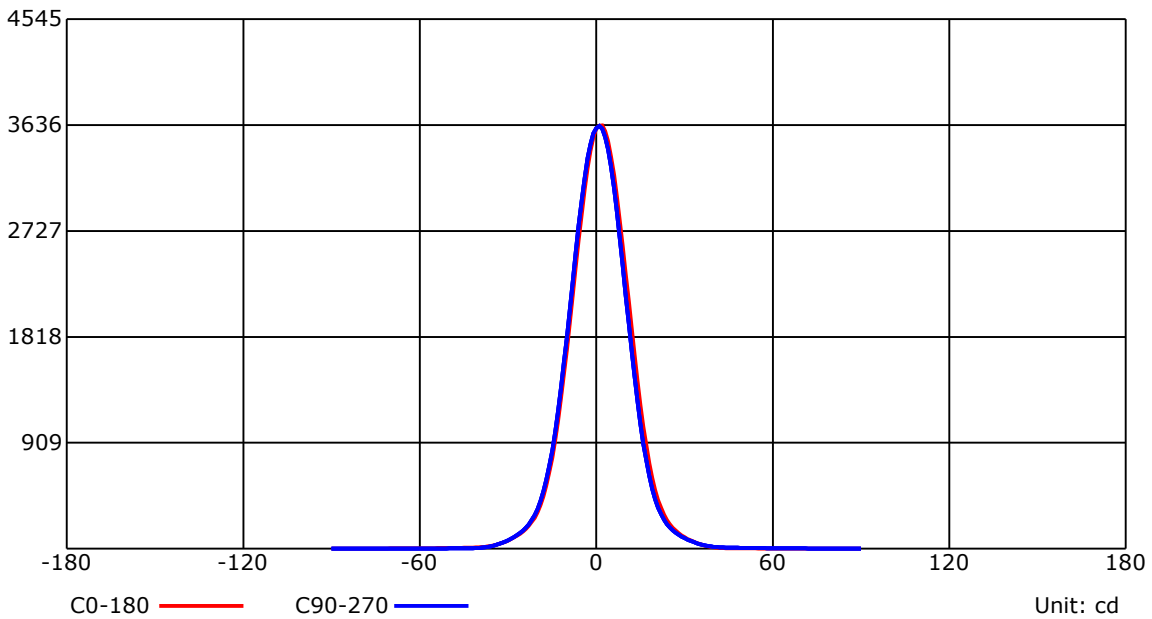
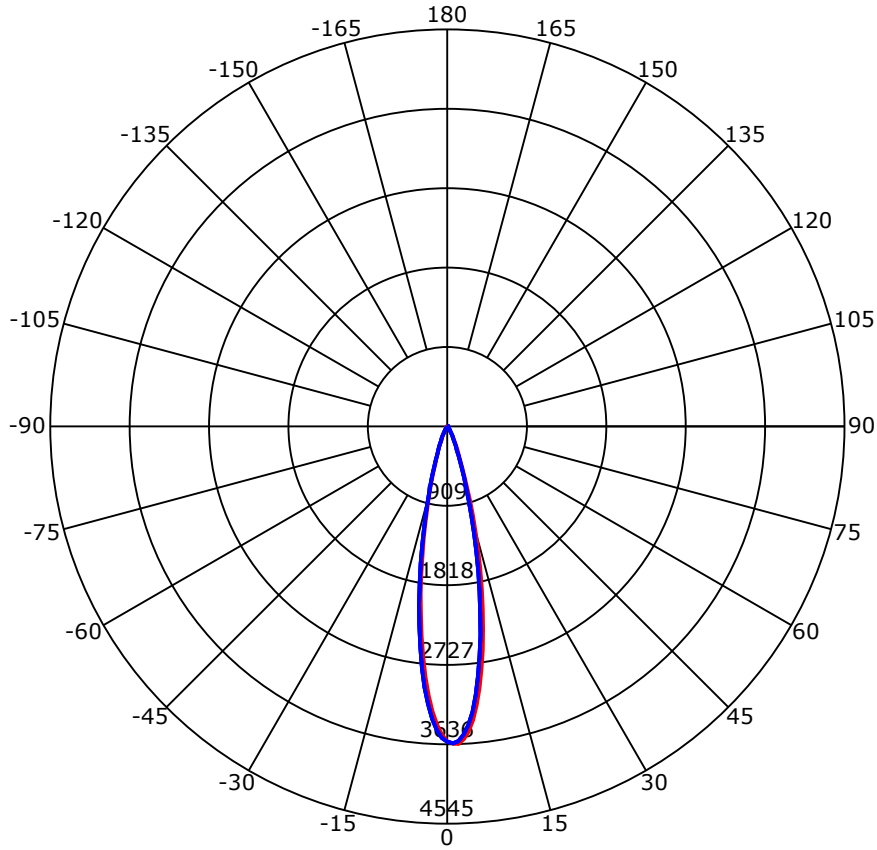
C Range: 0 - 360 Deg  
 C Interval: 45.0 Deg  
 Test Speed: High  
 Temperature: 25  
 Operators: QC01  
 Test Date: 2024/10/15 16:23:13

G Range: 0 - 90 Deg  
 G Interval: 1.0 Deg  
 Test System: Huipu CPM-1600B Goniophotometer  
 Humidity: 60  
 Test Distance: 6.81 m  
 Remarks:

Report No.:

Test Time: 2024/10/15 16:23:13

## Luminous Intensity Distribution Curve



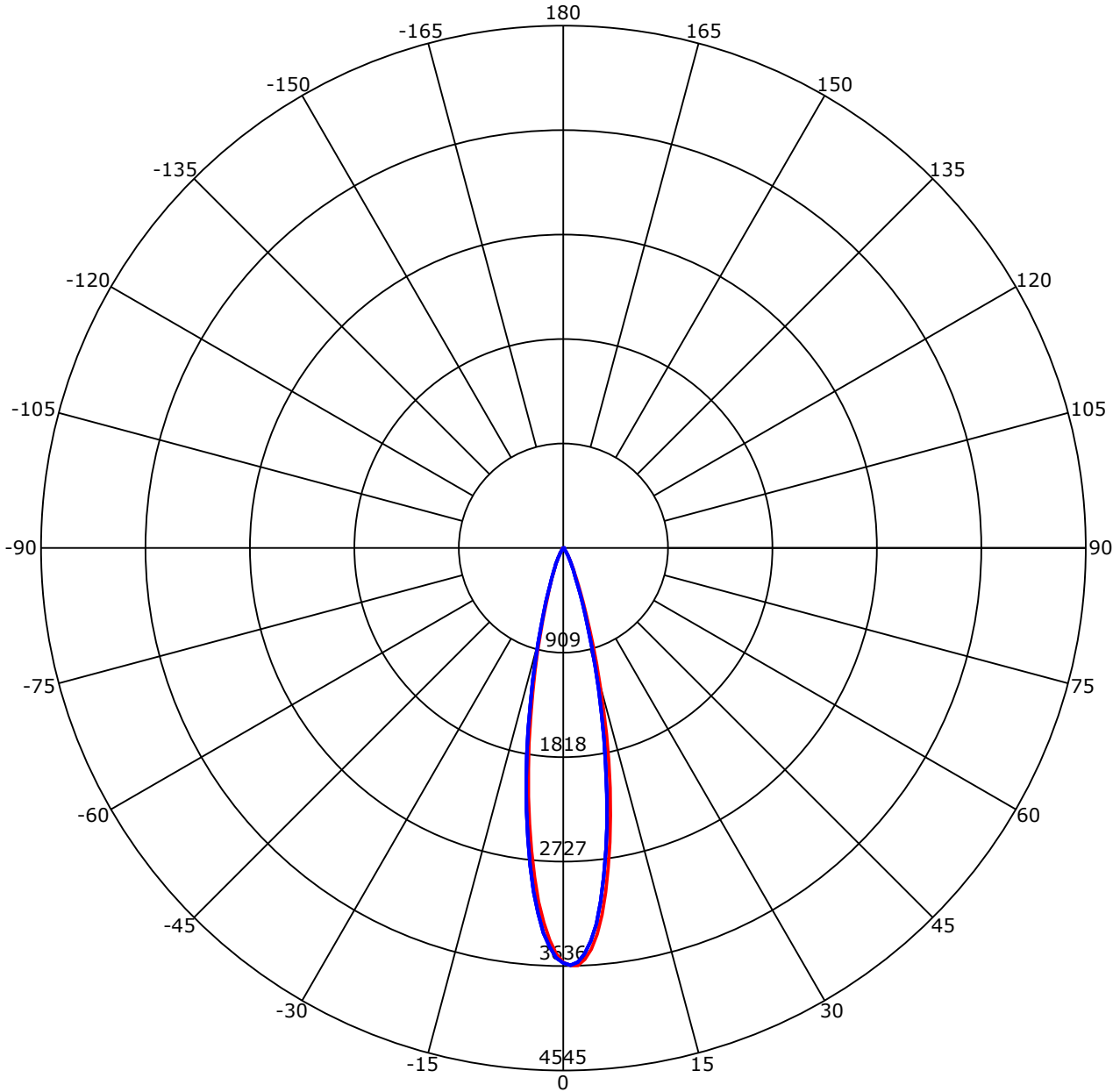
C Range: 0 - 360 Deg  
 C Interval: 45.0 Deg  
 Test Speed: High  
 Temperature: 25  
 Operators: QC01  
 Test Date: 2024/10/15 16:23:13

G Range: 0 - 90 Deg  
 G Interval: 1.0 Deg  
 Test System: Huipu CPM-1600B Goniophotometer  
 Humidity: 60  
 Test Distance: 6.81 m  
 Remarks:

Report No.:

Test Time: 2024/10/15 16:23:13

## Luminous Intensity Distribution Curve



C0-180 — C90-270 —  
 Unit: cd/klm

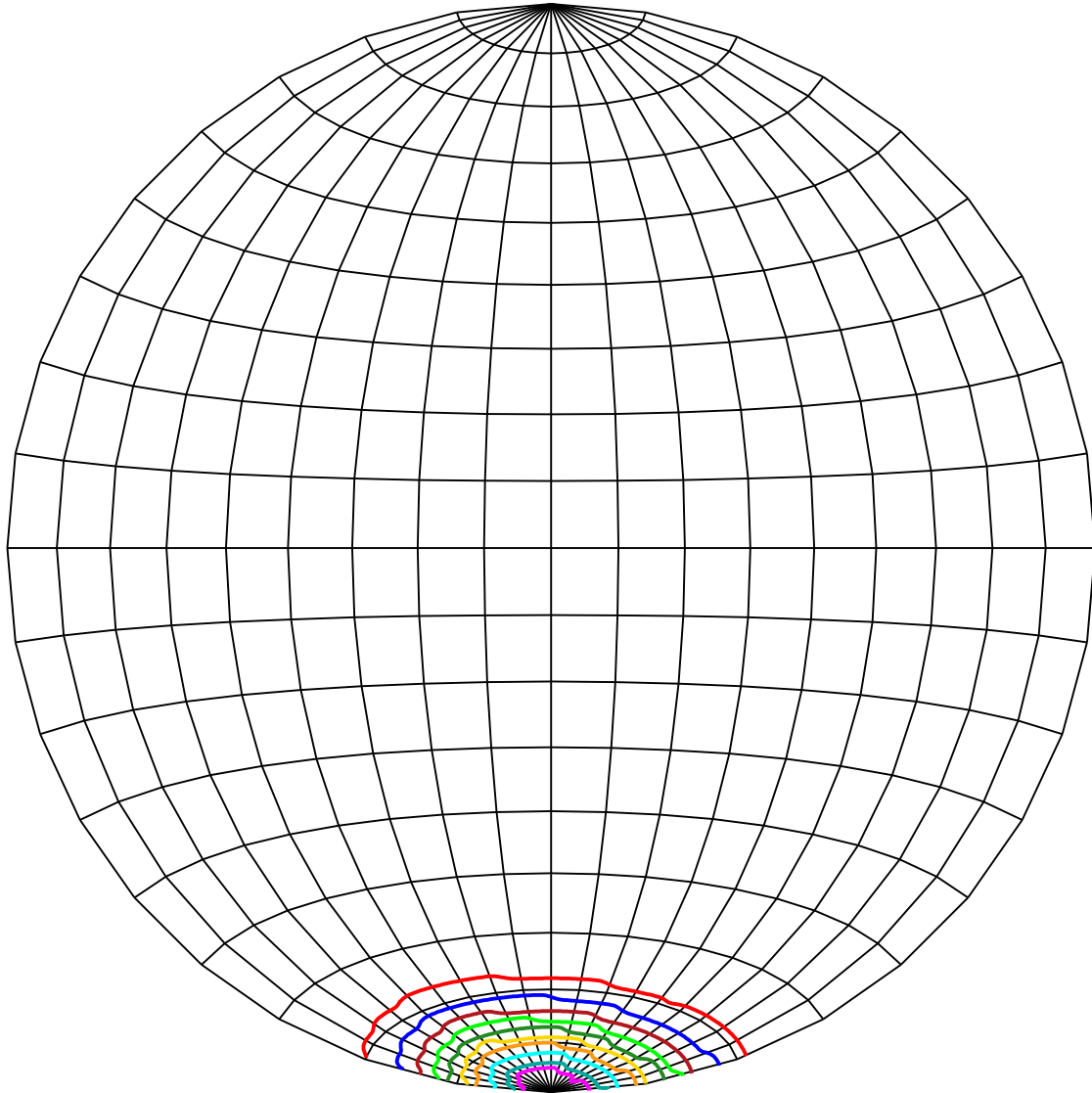
C Range: 0 - 360 Deg  
 C Interval: 45.0 Deg  
 Test Speed: High  
 Temperature: 25  
 Operators: QC01  
 Test Date: 2024/10/15 16:23:13

G Range: 0 - 90 Deg  
 G Interval: 1.0 Deg  
 Test System: Huipu CPM-1600B Goniophotometer  
 Humidity: 60  
 Test Distance: 6.81 m  
 Remarks:

Report No.:

Test Time: 2024/10/15 16:23:13

## ISOCANDELA DIAGRAM (SPHERE)



Unit of intensity:cd    I<sub>max</sub>(100%): 3635.84 cd

— 3454.048(95%I <sub>max</sub> )	— 1817.92(50%I <sub>max</sub> )
— 3272.256(90%I <sub>max</sub> )	— 1454.336(40%I <sub>max</sub> )
— 2908.672(80%I <sub>max</sub> )	— 1090.752(30%I <sub>max</sub> )
— 2545.088(70%I <sub>max</sub> )	— 727.168(20%I <sub>max</sub> )
— 2181.504(60%I <sub>max</sub> )	— 363.584(10%I <sub>max</sub> )

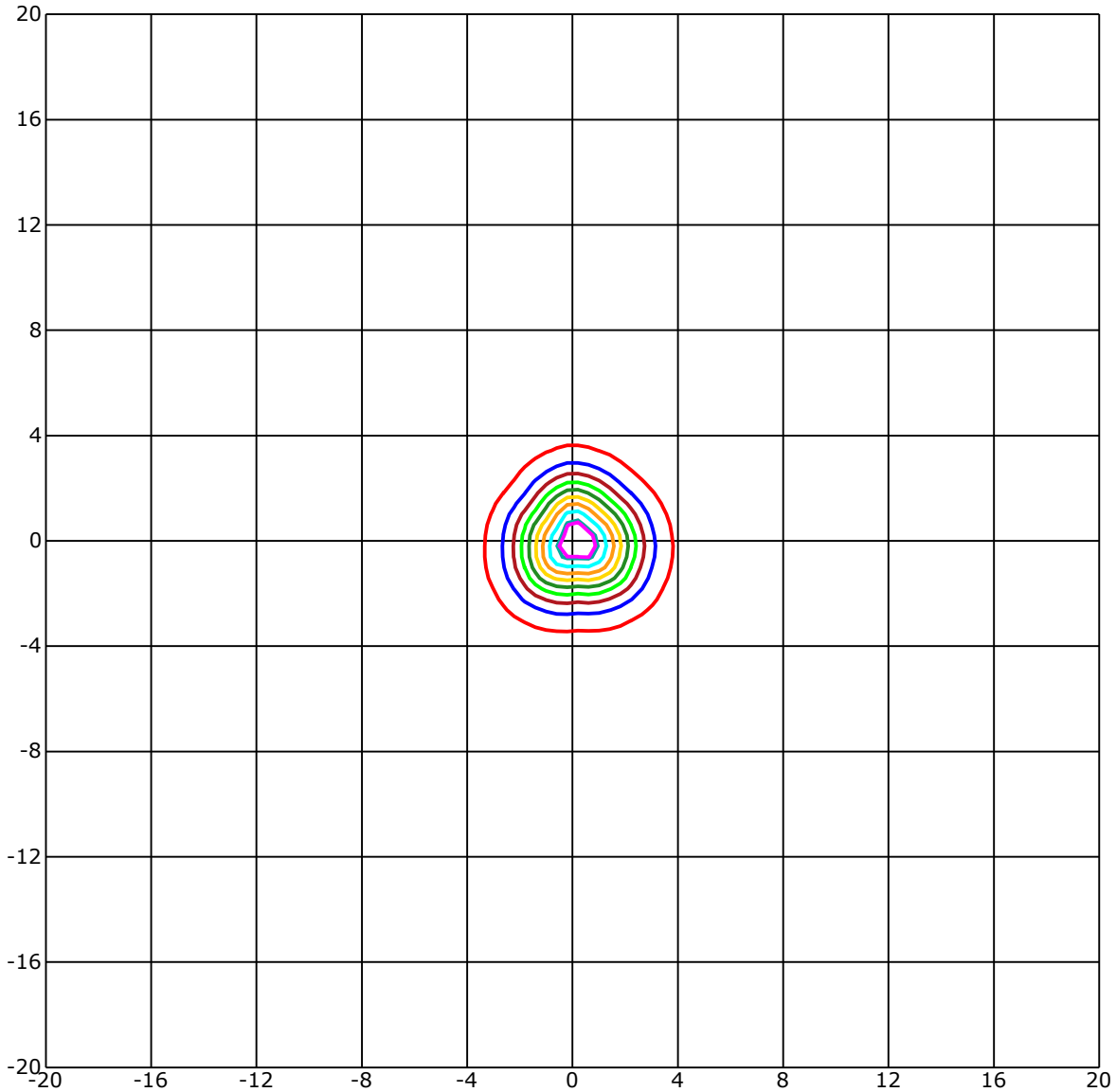
C Range: 0 - 360 Deg  
 C Interval: 45.0 Deg  
 Test Speed: High  
 Temperature: 25  
 Operators: QC01  
 Test Date: 2024/10/15 16:23:13

G Range: 0 - 90 Deg  
 G Interval: 1.0 Deg  
 Test System: Huipu CPM-1600B Goniophotometer  
 Humidity: 60  
 Test Distance: 6.81 m  
 Remarks:

Report No.:

Test Time: 2024/10/15 16:23:13

## ISOLX DIAGRAM



Unit of illumination:lx    Height of plane:10.0(m)/32.81(ft)

- |                   |                   |
|-------------------|-------------------|
| — 33.45(92%Emax)  | — 18.179(50%Emax) |
| — 32.723(90%Emax) | — 14.543(40%Emax) |
| — 29.087(80%Emax) | — 10.908(30%Emax) |
| — 25.451(70%Emax) | — 7.272(20%Emax)  |
| — 21.815(60%Emax) | — 3.636(10%Emax)  |

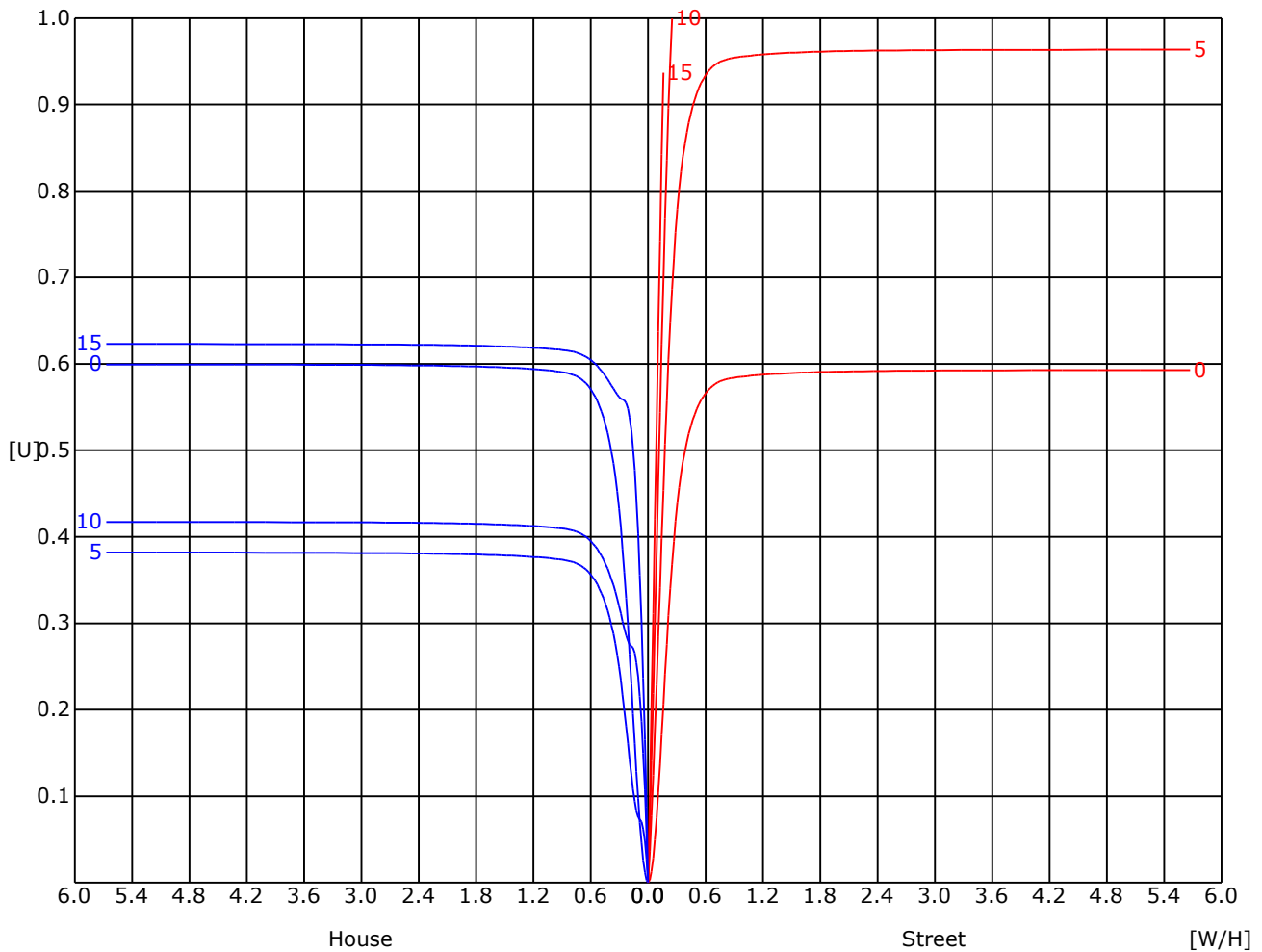
C Range: 0 - 360 Deg  
 C Interval: 45.0 Deg  
 Test Speed: High  
 Temperature: 25  
 Operators: QC01  
 Test Date: 2024/10/15 16:23:13

G Range: 0 - 90 Deg  
 G Interval: 1.0 Deg  
 Test System: Huipu CPM-1600B Goniophotometer  
 Humidity: 60  
 Test Distance: 6.81 m  
 Remarks:

Report No.:

Test Time: 2024/10/15 16:23:13

## UTILIZATION FACTOR DIAGRAM (ROAD)



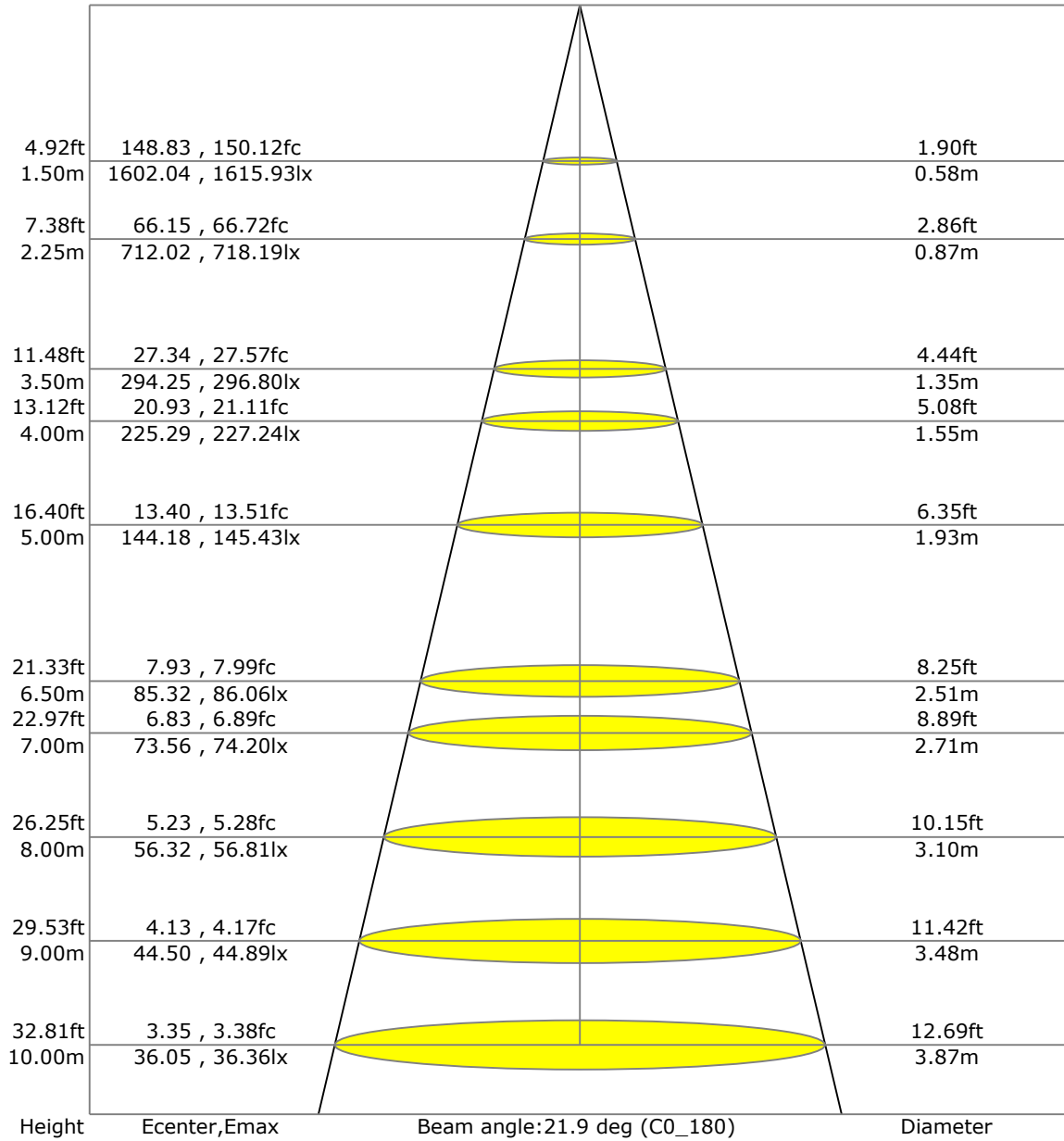
C Range: 0 - 360 Deg  
 C Interval: 45.0 Deg  
 Test Speed: High  
 Temperature: 25  
 Operators: QC01  
 Test Date: 2024/10/15 16:23:13

G Range: 0 - 90 Deg  
 G Interval: 1.0 Deg  
 Test System: Huipu CPM-1600B Goniophotometer  
 Humidity: 60  
 Test Distance: 6.81 m  
 Remarks:

Report No.:

Test Time: 2024/10/15 16:23:13

### LX-DISTANCE DIAGRAM



C Range: 0 - 360 Deg  
 C Interval: 45.0 Deg  
 Test Speed: High  
 Temperature: 25  
 Operators: QC01  
 Test Date: 2024/10/15 16:23:13

G Range: 0 - 90 Deg  
 G Interval: 1.0 Deg  
 Test System: Huipu CPM-1600B Goniophotometer  
 Humidity: 60  
 Test Distance: 6.81 m  
 Remarks:

Report No.:

Test Time: 2024/10/15 16:23:13

## UGR(Unified Glare Rating) TABLE

RHOCC	70	70	50	50	30	70	70	50	50	30
RHOW	50	30	50	30	30	50	30	50	30	30
RHOF	20	20	20	20	20	20	20	20	20	20
Room Size X	Viewed Endwise					Viewed Crosswise				
2H 2H	1.74	1.81	1.94	1.99	2.24	2.32	2.39	2.52	2.57	2.82
3H	1.76	1.82	1.96	2.01	2.26	2.31	2.37	2.51	2.56	2.81
4H	1.75	1.82	1.96	2.01	2.26	2.29	2.36	2.50	2.56	2.80
6H	1.74	1.81	1.95	2.01	2.26	2.28	2.35	2.49	2.55	2.80
8H	1.73	1.80	1.95	2.00	2.26	2.27	2.34	2.49	2.54	2.80
12H	1.72	1.79	1.94	2.00	2.25	2.26	2.33	2.48	2.54	2.79
4H 2H	1.80	1.87	2.02	2.07	2.32	3.09	3.15	3.30	3.35	3.60
3H	1.81	1.88	2.03	2.08	2.34	3.07	3.14	3.29	3.34	3.60
4H	1.80	1.87	2.03	2.08	2.34	3.05	3.12	3.28	3.33	3.59
6H	1.78	1.85	2.02	2.07	2.34	3.03	3.10	3.27	3.32	3.58
8H	1.77	1.84	2.02	2.07	2.34	3.02	3.08	3.26	3.31	3.58
12H	1.76	1.83	2.01	2.06	2.33	3.00	3.07	3.25	3.30	3.58
8H 4H	1.78	1.85	2.00	2.05	2.31	3.25	3.32	3.47	3.52	3.77
6H	1.74	1.81	2.00	2.05	2.33	3.20	3.27	3.46	3.51	3.78
8H	1.73	1.80	2.00	2.04	2.32	3.19	3.25	3.45	3.50	3.78
12H	1.71	1.78	1.99	2.04	2.32	3.17	3.23	3.44	3.49	3.77
12H 4H	1.75	1.82	2.00	2.05	2.33	3.22	3.29	3.47	3.52	3.79
6H	1.73	1.80	1.99	2.04	2.32	3.19	3.26	3.46	3.51	3.78

C Range: 0 - 360 Deg  
 C Interval: 45.0 Deg  
 Test Speed: High  
 Temperature: 25  
 Operators: QC01  
 Test Date: 2024/10/15 16:23:13

G Range: 0 - 90 Deg  
 G Interval: 1.0 Deg  
 Test System: Huipu CPM-1600B Goniophotometer  
 Humidity: 60  
 Test Distance: 6.81 m  
 Remarks:

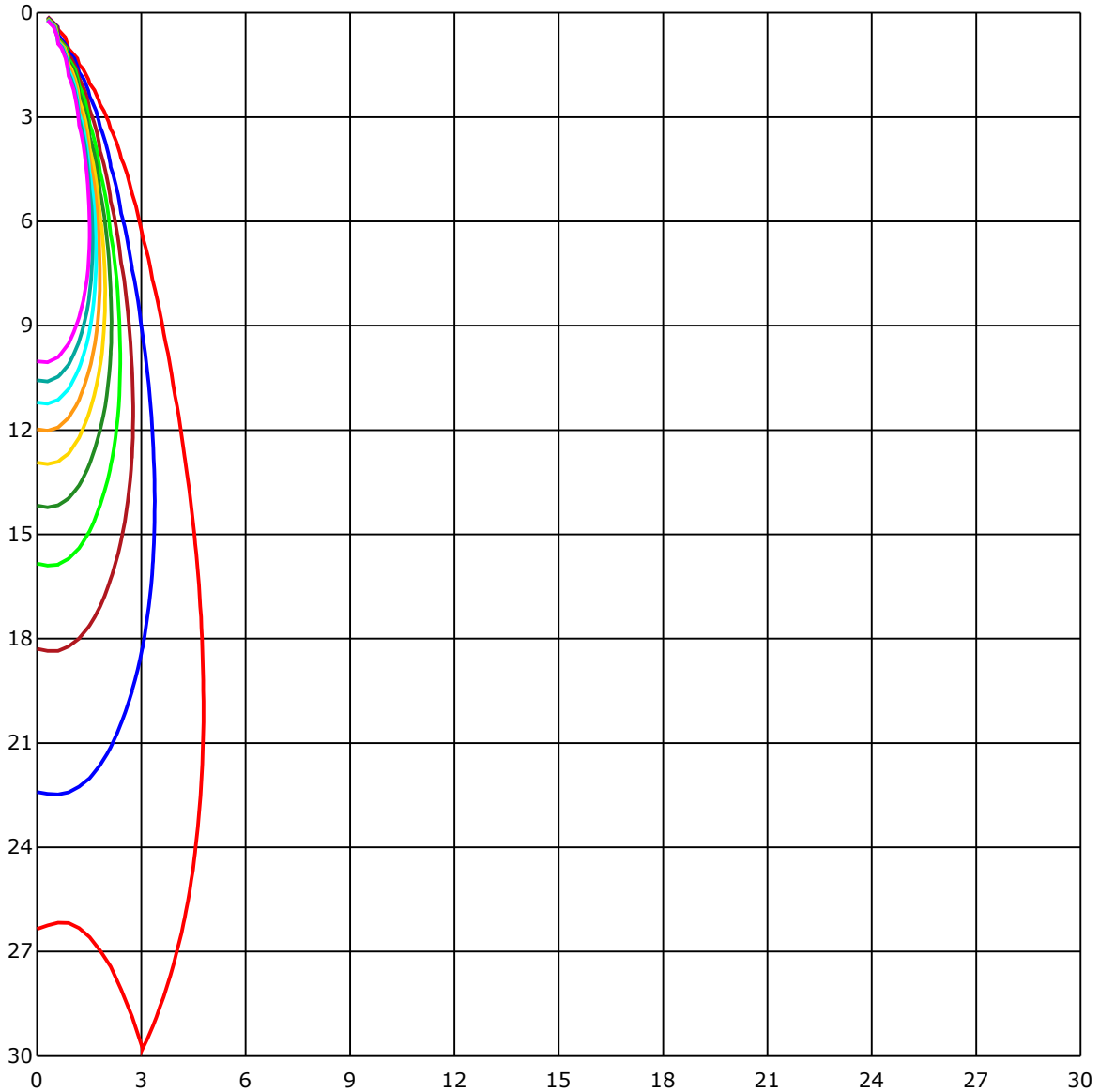




Report No.:

Test Time: 2024/10/15 16:23:13

## SPACE ISOLX DIAGRAM



Unit of illumination:lx

- |   |  |
|---|--|
| <span style="color: magenta;">—</span> 35.903   | <span style="color: green;">—</span> 17.952      |
| <span style="color: cyan;">—</span> 32.313      | <span style="color: lightgreen;">—</span> 14.361 |
| <span style="color: lightblue;">—</span> 28.723 | <span style="color: red;">—</span> 10.771        |
| <span style="color: orange;">—</span> 25.132    | <span style="color: blue;">—</span> 7.181        |
| <span style="color: yellow;">—</span> 21.542    | <span style="color: darkred;">—</span> 3.59      |

C Range: 0 - 360 Deg  
 C Interval: 45.0 Deg  
 Test Speed: High  
 Temperature: 25  
 Operators: QC01  
 Test Date: 2024/10/15 16:23:13

G Range: 0 - 90 Deg  
 G Interval: 1.0 Deg  
 Test System: Huipu CPM-1600B Goniophotometer  
 Humidity: 60  
 Test Distance: 6.81 m  
 Remarks:

Report No.:

Test Time: 2024/10/15 16:23:13

## LUMINOUS DISTRIBUTION INTENSITY DATA

Gamma\C	C0	C45	C90	C135	C180	C225	C270	C315	C360	
G0	3604.58	3635.84	3608.15	3550.79	3604.58	3635.84	3608.15	3550.79	3604.58	
G1	3631.11	3613.9	3628.42	3463.65	3527.55	3620.21	3565.02	3600.22	3631.11	
G2	3633.99	3543.46	3603.93	3339.78	3413.33	3566.32	3470.46	3613.35	3633.99	
G3	3582.6	3441.01	3532.38	3170.78	3265.02	3482.2	3351.97	3577.59	3582.6	
G4	3498.43	3290.71	3426.13	2972.01	3083.36	3352.34	3182.65	3508.72	3498.43	
G5	3369.92	3117.03	3280.83	2746.49	2875.18	3194.11	2996.27	3395.24	3369.92	
G6	3208.62	2909.5	3090.18	2513.68	2646.13	3001.55	2776.35	3251.06	3208.62	
G7	3015.05	2687.96	2881.07	2266.45	2418.24	2793.28	2543.96	3076.82	3015.05	
G8	2806.4	2457.93	2651.46	2028.21	2183.8	2561.63	2300.49	2881.9	2806.4	
G9	2591.36	2223.32	2421.67	1792.95	1947.94	2326.83	2063.13	2663.19	2591.36	
G10	2362.12	1978.08	2171.47	1570.9	1718.84	2088.27	1829.31	2438.32	2362.12	
G11	2125.32	1742.81	1927.21	1353.9	1496.7	1853.1	1600.86	2205.09	2125.32	
G12	1892.15	1514.92	1693.15	1154.26	1291.85	1626.87	1384.0	1971.22	1892.15	
G13	1661.84	1302.98	1472.72	972.37	1100.69	1409.0	1185.19	1742.35	1661.84	
G14	1439.75	1109.18	1264.72	814.83	932.39	1209.12	1002.79	1523.04	1439.75	
G15	1235.78	936.7	1070.82	674.22	781.58	1029.87	844.51	1319.82	1235.78	
G16	1051.02	778.14	900.16	557.16	652.93	869.92	707.7	1129.12	1051.02	
G17	881.84	645.46	751.25	459.4	541.9	732.65	590.51	954.37	881.84	
G18	732.84	530.82	620.79	379.59	449.71	612.21	492.98	801.38	732.84	
G19	606.74	437.56	511.16	315.22	375.51	510.37	409.59	668.74	606.74	
G20	502.49	362.24	422.76	263.37	315.08	424.94	341.47	556.05	502.49	
G21	418.96	299.54	351.81	222.61	265.64	356.68	288.92	464.92	418.96	
G22	350.19	250.57	293.47	189.59	227.52	301.17	244.87	390.53	350.19	
G23	291.43	211.99	247.37	162.59	196.26	254.93	207.67	329.08	291.43	
G24	245.0	181.24	210.69	140.06	169.69	218.62	179.2	279.65	245.0	
G25	208.79	155.68	182.26	120.81	145.57	188.94	155.87	239.3	208.79	
G26	179.99	134.49	158.05	104.11	126.1	163.24	134.03	207.53	179.99	
G27	155.08	115.62	136.02	90.16	110.0	141.68	116.03	179.89	155.08	
G28	133.47	99.43	117.93	77.54	95.67	122.57	99.34	156.84	133.47	
G29	114.55	85.7	103.7	66.09	82.83	107.5	85.33	135.74	114.55	
G30	98.83	73.32	90.34	55.74	70.49	93.26	73.09	118.4	98.83	
G31	83.62	62.19	78.42	46.14	59.78	80.74	61.36	102.72	83.62	
G32	71.05	52.31	67.43	38.03	50.69	68.68	50.64	89.13	71.05	
G33	60.38	42.67	57.46	30.7	42.3	57.6	41.46	76.52	60.38	
G34	50.13	34.5	47.81	24.67	34.87	47.63	33.34	65.25	50.13	
G35	40.63	27.59	40.16	19.48	28.52	39.47	26.53	54.49	40.63	
G36	32.74	21.52	33.44	15.21	23.37	32.65	20.31	44.61	32.74	

C Range: 0 - 360 Deg  
 C Interval: 45.0 Deg  
 Test Speed: High  
 Temperature: 25  
 Operators: QC01  
 Test Date: 2024/10/15 16:23:13

G Range: 0 - 90 Deg  
 G Interval: 1.0 Deg  
 Test System: Huipu CPM-1600B Goniophotometer  
 Humidity: 60  
 Test Distance: 6.81 m  
 Remarks:

Report No.:

Test Time: 2024/10/15 16:23:13

### LUMINOUS DISTRIBUTION INTENSITY DATA(Continue 1)

Gamma\C	C0	C45	C90	C135	C180	C225	C270	C315	C360	
G37	25.97	16.79	27.5	11.87	19.11	26.67	15.4	36.68	25.97	
G38	20.22	12.71	22.77	9.04	15.72	21.56	11.5	30.01	20.22	
G39	15.4	9.55	18.83	6.59	13.17	17.72	8.63	24.21	15.4	
G40	11.97	7.19	15.63	5.38	11.59	14.38	6.26	19.9	11.97	
G41	8.86	5.52	13.12	4.45	10.48	12.34	5.19	16.32	8.86	
G42	6.59	4.5	11.36	4.03	9.69	10.99	4.36	13.59	6.59	
G43	5.24	3.99	10.39	3.71	8.9	10.06	3.85	11.73	5.24	
G44	4.54	3.66	9.55	3.43	8.49	9.41	3.48	10.43	4.54	
G45	4.08	3.48	9.0	3.15	8.07	8.77	3.2	9.79	4.08	
G46	3.66	3.15	8.44	3.11	7.61	8.16	3.01	9.28	3.66	
G47	3.39	2.88	8.07	2.74	7.14	7.79	2.92	8.58	3.39	
G48	3.2	2.74	7.65	2.5	6.82	7.33	2.64	8.07	3.2	
G49	2.88	2.46	7.28	2.41	6.45	7.1	2.46	7.51	2.88	
G50	2.78	2.37	6.77	2.23	6.12	6.68	2.23	7.1	2.78	
G51	2.5	2.27	6.63	1.99	5.75	6.35	2.04	6.68	2.5	
G52	2.46	1.9	6.17	1.86	5.61	5.89	1.99	6.4	2.46	
G53	2.18	1.9	5.89	1.81	5.24	5.7	2.04	5.98	2.18	
G54	2.18	1.76	5.61	1.76	5.01	5.47	1.86	5.8	2.18	
G55	1.95	1.81	5.38	1.58	4.82	5.29	1.62	5.43	1.95	
G56	1.76	1.58	5.01	1.58	4.73	4.87	1.44	5.29	1.76	
G57	1.62	1.53	4.87	1.44	4.45	4.78	1.44	4.92	1.62	
G58	1.53	1.3	4.54	1.39	4.27	4.5	1.3	4.82	1.53	
G59	1.48	1.25	4.41	1.25	4.03	4.36	1.21	4.54	1.48	
G60	1.48	1.21	4.13	1.21	3.8	4.22	1.21	4.5	1.48	
G61	1.3	1.16	3.99	1.21	3.66	3.99	1.21	4.17	1.3	
G62	1.3	1.02	3.9	1.07	3.52	3.76	1.02	3.9	1.3	
G63	1.25	1.02	3.71	0.83	3.34	3.62	1.02	3.76	1.25	
G64	1.11	0.74	3.43	0.7	3.06	3.39	0.88	3.71	1.11	
G65	1.02	0.7	3.34	0.6	2.83	3.25	0.74	3.39	1.02	
G66	0.97	0.6	3.25	0.56	2.78	3.01	0.65	3.25	0.97	
G67	0.79	0.46	3.01	0.46	2.5	2.88	0.56	3.01	0.79	
G68	0.74	0.23	2.83	0.14	2.27	2.6	0.28	2.88	0.74	
G69	0.6	0.23	2.78	0.14	2.23	2.46	0.09	2.6	0.6	
G70	0.46	0.09	2.46	0.14	2.18	2.27	0.09	2.5	0.46	
G71	0.28	0.0	2.27	0.0	1.76	1.99	0.09	2.32	0.28	
G72	0.14	0.0	1.99	0.0	1.62	1.9	0.0	2.18	0.14	
G73	0.14	0.0	1.86	0.0	1.53	1.86	0.0	1.99	0.14	

C Range: 0 - 360 Deg  
 C Interval: 45.0 Deg  
 Test Speed: High  
 Temperature: 25  
 Operators: QC01  
 Test Date: 2024/10/15 16:23:13

G Range: 0 - 90 Deg  
 G Interval: 1.0 Deg  
 Test System: Huipu CPM-1600B Goniophotometer  
 Humidity: 60  
 Test Distance: 6.81 m  
 Remarks:

