

Report No.:

Test Time: 2024/5/25 11:50:08

LUMINAIRE PHOTOMETRIC TEST REPORT

Luminaire Property

Manufacturer: InBright
 Luminaire Type: IBSP104CT095H78-60°-10.6W
 Lamp Type:
 Luminous Width: 90 mm
 Luminous Length: 90 mm
 Luminous Height: 74 mm

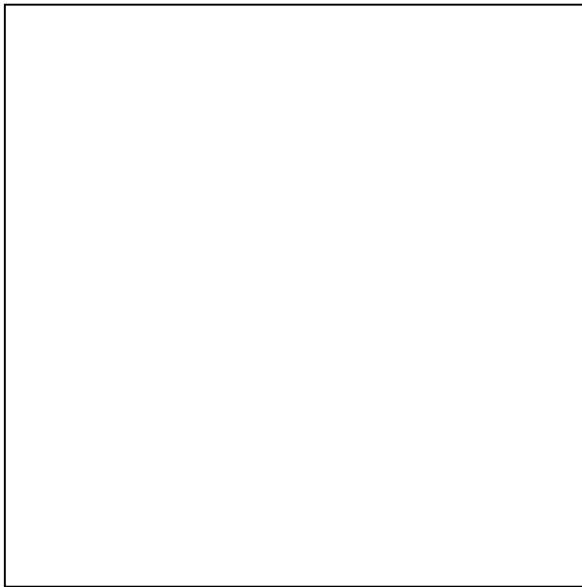
Voltage(V): 220.00 V
 Current(A): 0.0520 A
 Power(W): 10.59 W
 Power Factor: 0.9180
 Lamp Luminous Flux: 1148.66

Photometric Results

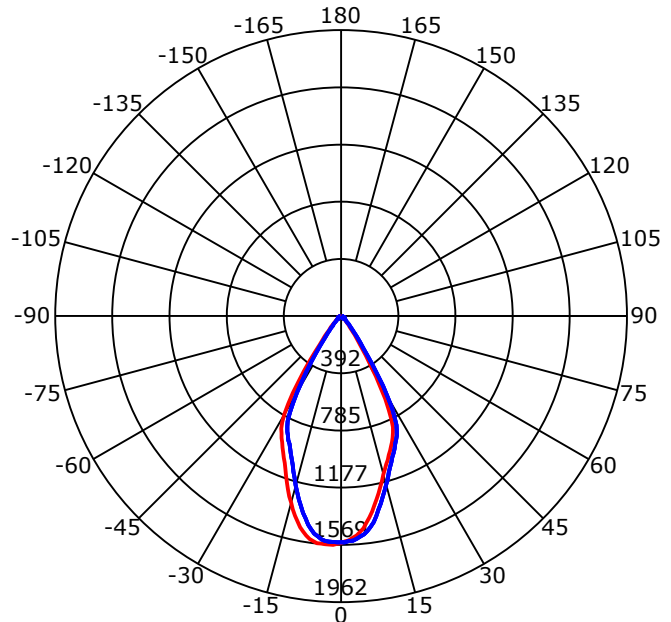
CIE Class: Direct
 Luminaire Luminous Flux: 1148.661 lm
 Downward Ratio: 100.00%
 Luminaire Efficacy Rating(LER): 108.47 lm/W
 Beam Angle(50%) C0-180,C90-270: 55.9,55.7
 Field Angle(10%) C0-180,C90-270: 75.8,76.3
 S/MH C0-180,C90-270: 0.808,0.808

Max. Intensity: 1569.31 cd
 Max.Intensity Angle: C=180 Gamma=4
 Upward Ratio: 0.00%
 Efficacy: 100.00%
 Center Intensity: 1558.99 cd
 Effective Luminous Flux: 1046.98 lm
 ERP(ϕ use)(120deg): 1134.28 lm

Picture of Luminaire



Luminous Intensity Distribution Curve



Beam Angle(50%) C0-180,C90-270: 55.9 deg,55.7 deg

C0-180 — C90-270 —

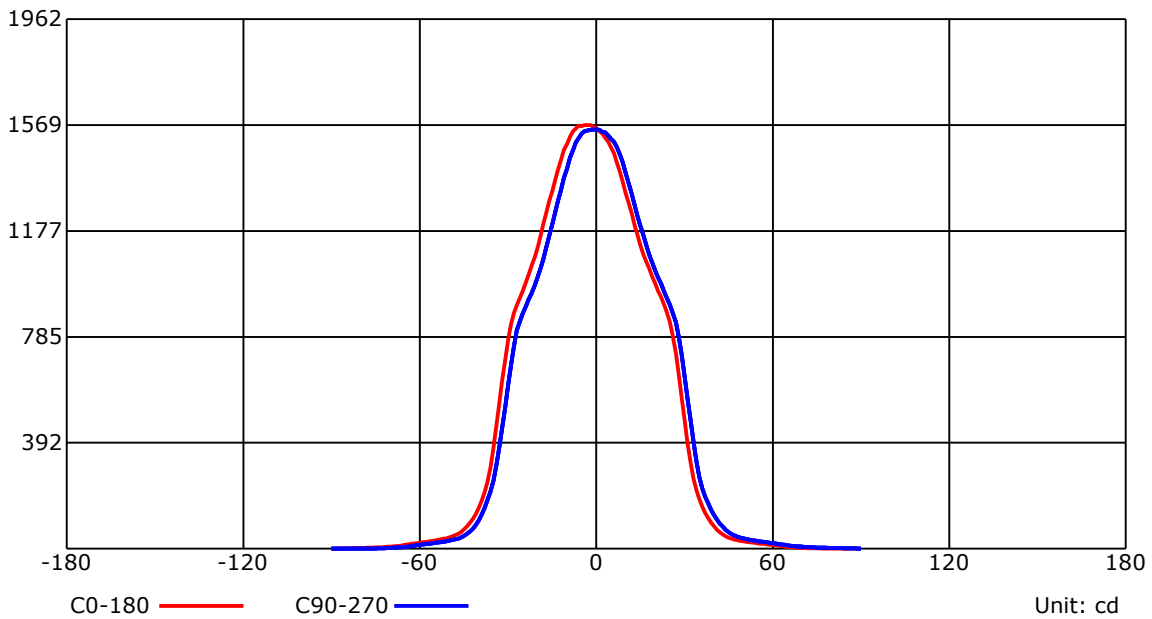
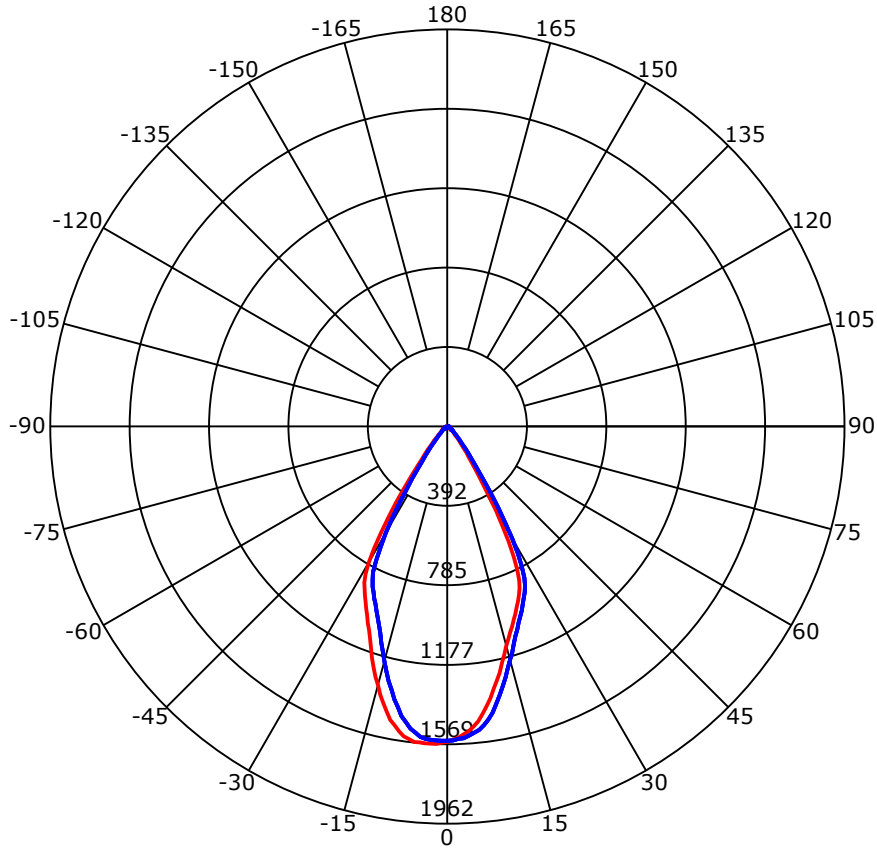
C Range: 0 - 360 Deg
 C Interval: 45.0 Deg
 Test Speed: High
 Temperature: 25
 Operators: QC01
 Test Date: 2024/5/25 11:50:08

G Range: 0 - 90 Deg
 G Interval: 1.0 Deg
 Test System: Huipu CPM-1600B Goniophotometer
 Humidity: 60
 Test Distance: 6.7 m
 Remarks:

Report No.:

Test Time: 2024/5/25 11:50:08

Luminous Intensity Distribution Curve



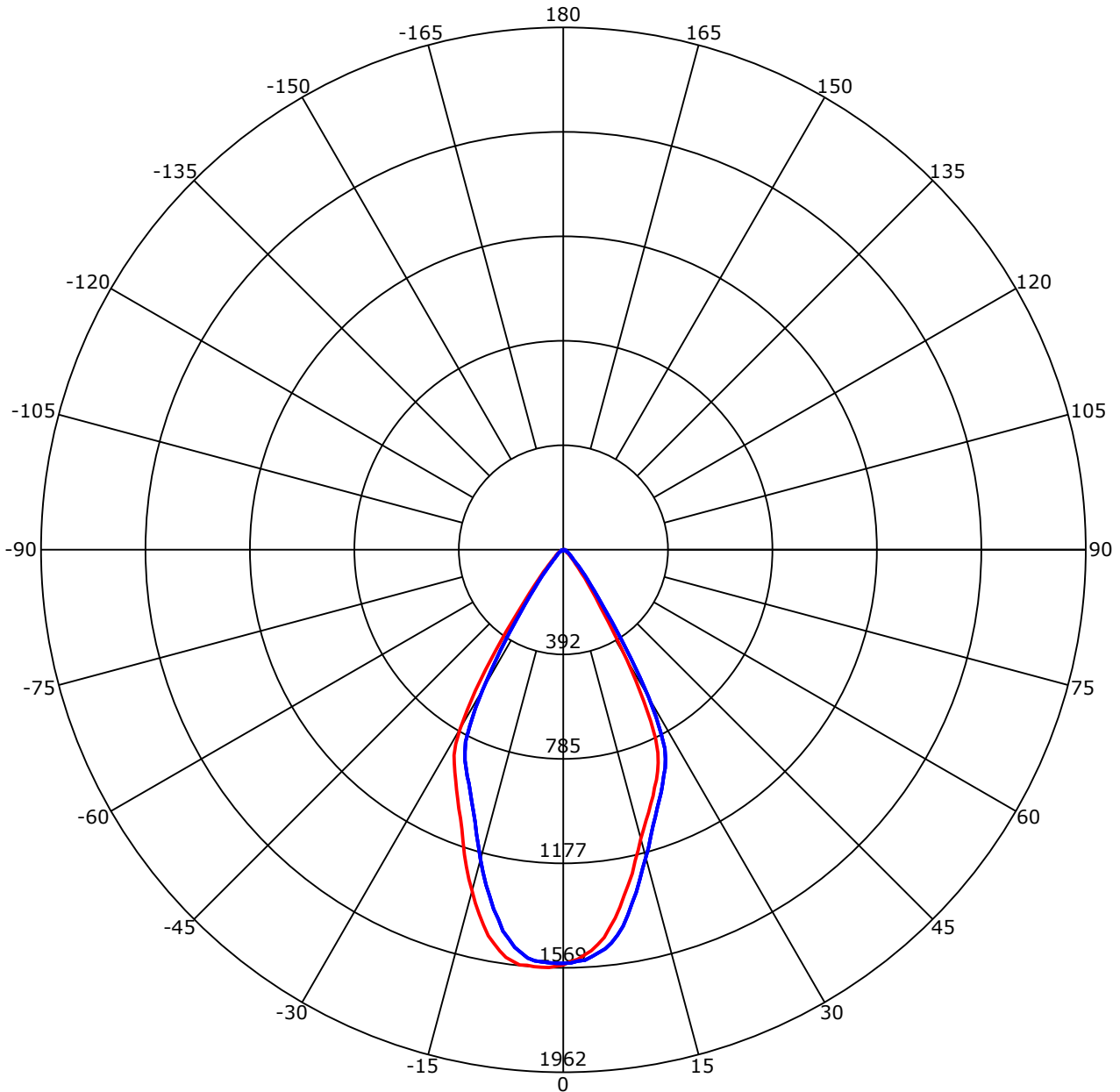
C Range: 0 - 360 Deg
 C Interval: 45.0 Deg
 Test Speed: High
 Temperature: 25
 Operators: QC01
 Test Date: 2024/5/25 11:50:08

G Range: 0 - 90 Deg
 G Interval: 1.0 Deg
 Test System: Huipu CPM-1600B Goniophotometer
 Humidity: 60
 Test Distance: 6.7 m
 Remarks:

Report No.:

Test Time: 2024/5/25 11:50:08

Luminous Intensity Distribution Curve



C0-180 — C90-270 —
 Unit: cd/klm

C Range: 0 - 360 Deg
 C Interval: 45.0 Deg
 Test Speed: High
 Temperature: 25
 Operators: QC01
 Test Date: 2024/5/25 11:50:08

G Range: 0 - 90 Deg
 G Interval: 1.0 Deg
 Test System: Huipu CPM-1600B Goniophotometer
 Humidity: 60
 Test Distance: 6.7 m
 Remarks:

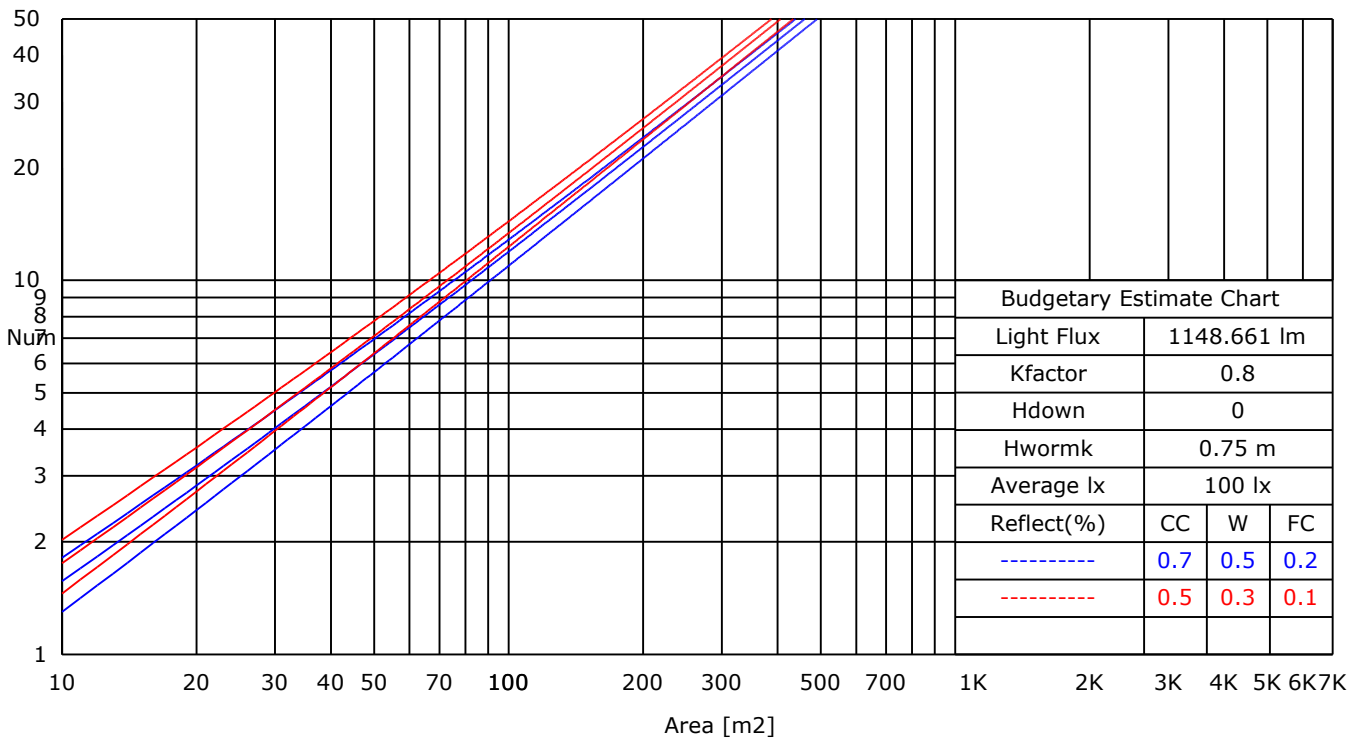
Report No.:

Test Time: 2024/5/25 11:50:08

UTILIZATION FACTORS TABLE

RHOCC	80			70			50			30			10			0
RHOW	50	30	10	50	30	10	50	30	10	50	30	10	50	30	10	0
RCR	COEFFICIENTS OF UTILIZATION FOR RHOFC=20															
0	1.19	1.19	1.19	1.16	1.16	1.16	1.11	1.11	1.11	1.06	1.06	1.06	1.02	1.02	1.02	1.00
1	1.07	1.06	1.05	1.06	1.04	1.03	1.02	1.00	0.99	0.97	0.95	0.93	0.90	0.88	0.87	0.81
2	1.01	0.99	0.98	0.99	0.97	0.96	0.96	0.94	0.92	0.92	0.89	0.87	0.86	0.84	0.81	0.76
3	0.96	0.94	0.93	0.95	0.93	0.91	0.92	0.89	0.87	0.88	0.85	0.83	0.84	0.80	0.77	0.73
4	0.92	0.91	0.90	0.91	0.89	0.88	0.89	0.86	0.84	0.85	0.82	0.79	0.81	0.77	0.74	0.70
5	0.89	0.87	0.86	0.88	0.86	0.84	0.85	0.82	0.80	0.82	0.79	0.76	0.79	0.75	0.72	0.68
6	0.86	0.84	0.83	0.85	0.83	0.81	0.82	0.80	0.78	0.80	0.76	0.73	0.76	0.72	0.69	0.65
7	0.83	0.81	0.81	0.82	0.80	0.79	0.80	0.77	0.75	0.77	0.74	0.71	0.74	0.70	0.67	0.63
8	0.80	0.79	0.78	0.79	0.77	0.76	0.77	0.74	0.72	0.75	0.71	0.69	0.72	0.68	0.65	0.61
9	0.78	0.76	0.76	0.77	0.75	0.74	0.75	0.72	0.70	0.73	0.69	0.67	0.70	0.66	0.63	0.60
10	0.75	0.74	0.74	0.75	0.73	0.72	0.73	0.70	0.68	0.71	0.67	0.65	0.68	0.64	0.61	0.58

LUMINAIRE BUDGETARY ESTIMATE DIAGRAM



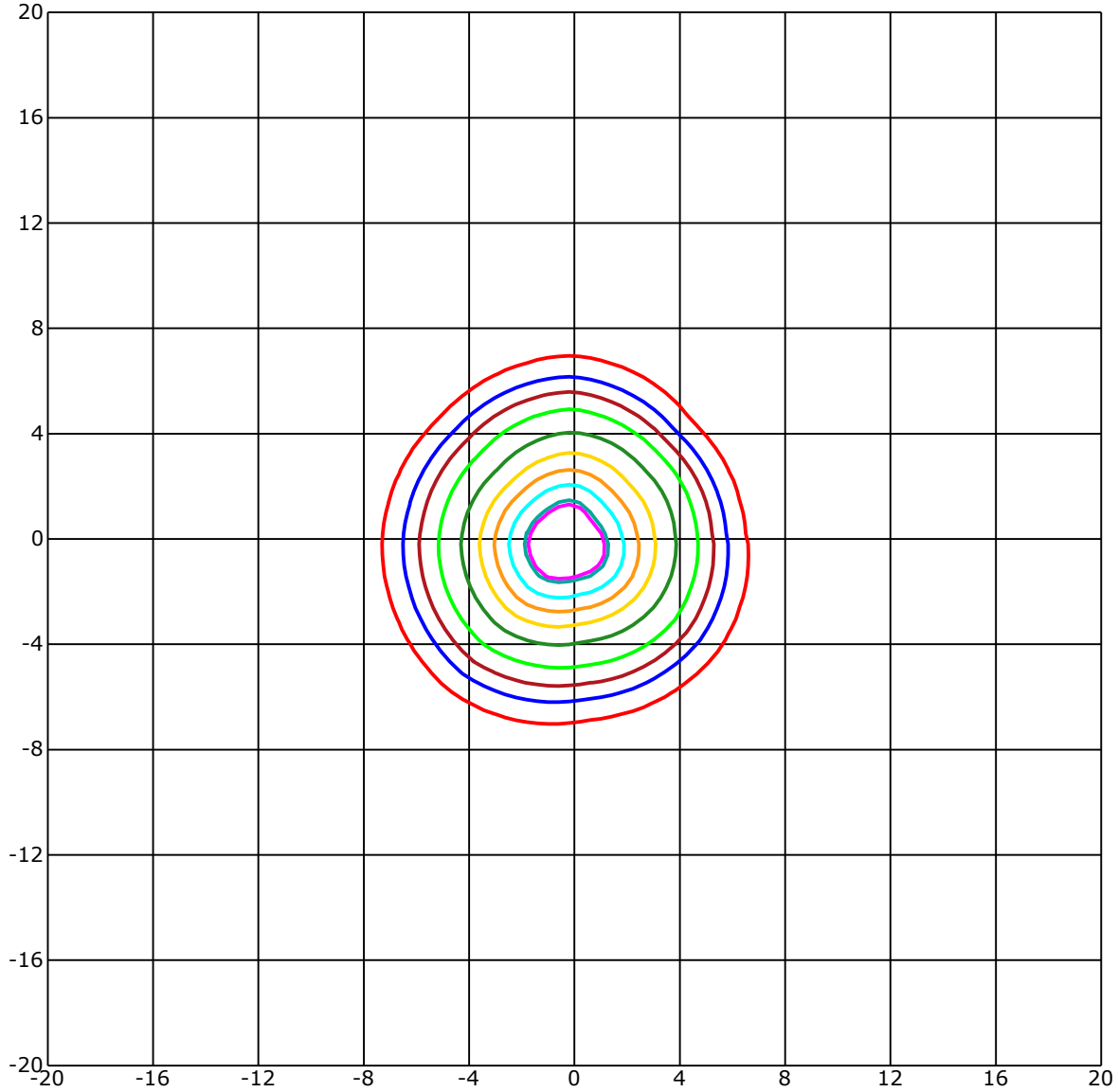
C Range: 0 - 360 Deg
 C Interval: 45.0 Deg
 Test Speed: High
 Temperature: 25
 Operators: QC01
 Test Date: 2024/5/25 11:50:08

G Range: 0 - 90 Deg
 G Interval: 1.0 Deg
 Test System: Huipu CPM-1600B Goniophotometer
 Humidity: 60
 Test Distance: 6.7 m
 Remarks:

Report No.:

Test Time: 2024/5/25 11:50:08

ISOLX DIAGRAM



Unit of illumination:lx Height of plane:10.0(m)/32.81(ft)

— 14.411(92%Emax)	— 7.832(50%Emax)
— 14.098(90%Emax)	— 6.266(40%Emax)
— 12.531(80%Emax)	— 4.699(30%Emax)
— 10.965(70%Emax)	— 3.133(20%Emax)
— 9.398(60%Emax)	— 1.566(10%Emax)

C Range: 0 - 360 Deg
 C Interval: 45.0 Deg
 Test Speed: High
 Temperature: 25
 Operators: QC01
 Test Date: 2024/5/25 11:50:08

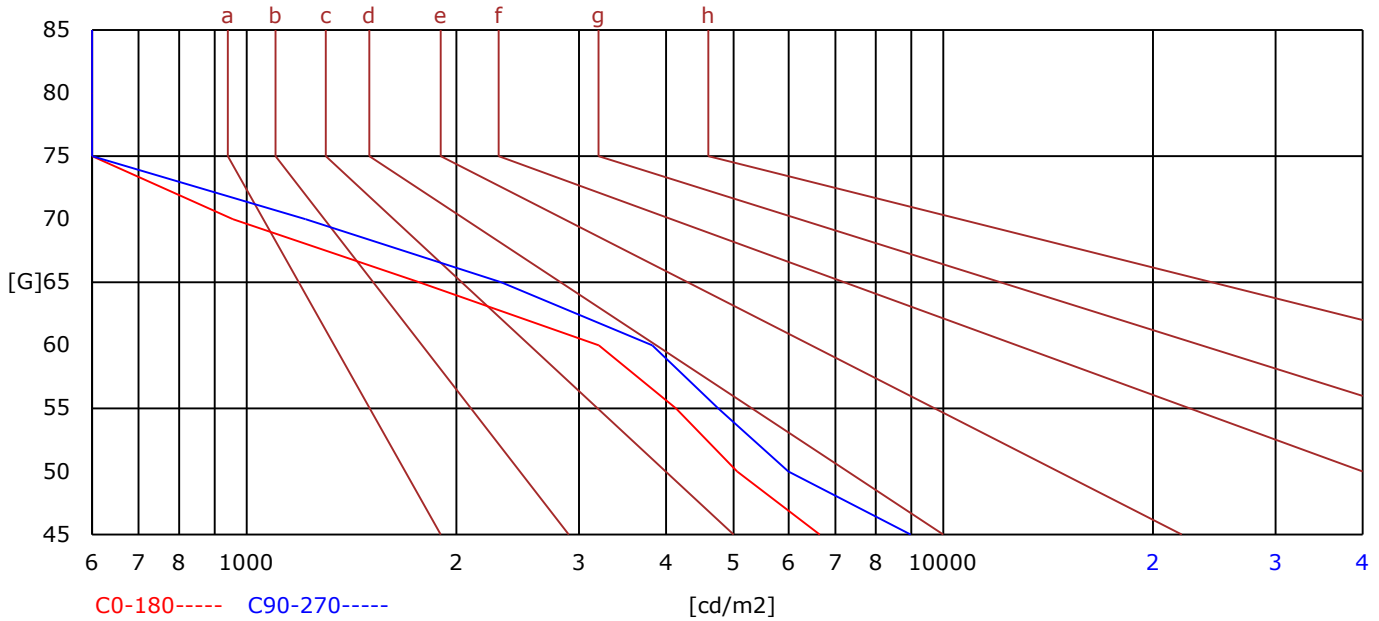
G Range: 0 - 90 Deg
 G Interval: 1.0 Deg
 Test System: Huipu CPM-1600B Goniophotometer
 Humidity: 60
 Test Distance: 6.7 m
 Remarks:

Report No.:

Test Time: 2024/5/25 11:50:08

BRIGHT LIMIT DIAGRAM

C/G	45	50	55	60	65	70	75	80	85
C0	6646	5061	4135	3203	1770	956	364	160	0
C90	8974	5992	4754	3824	2321	1215	450	287	0
Dazzle	Quality	Illuminance	---	---	---	---	---	---	---
1.15	A	2000	1000	500	<=300				
1.5	B		2000	1000	500	<=300			
1.85	C			2000	1000	500	<=300		
2.2	D				2000	1000	500	<=300	
2.55	E					2000	1000	500	<=300
---	---	a	b	c	d	e	f	g	h



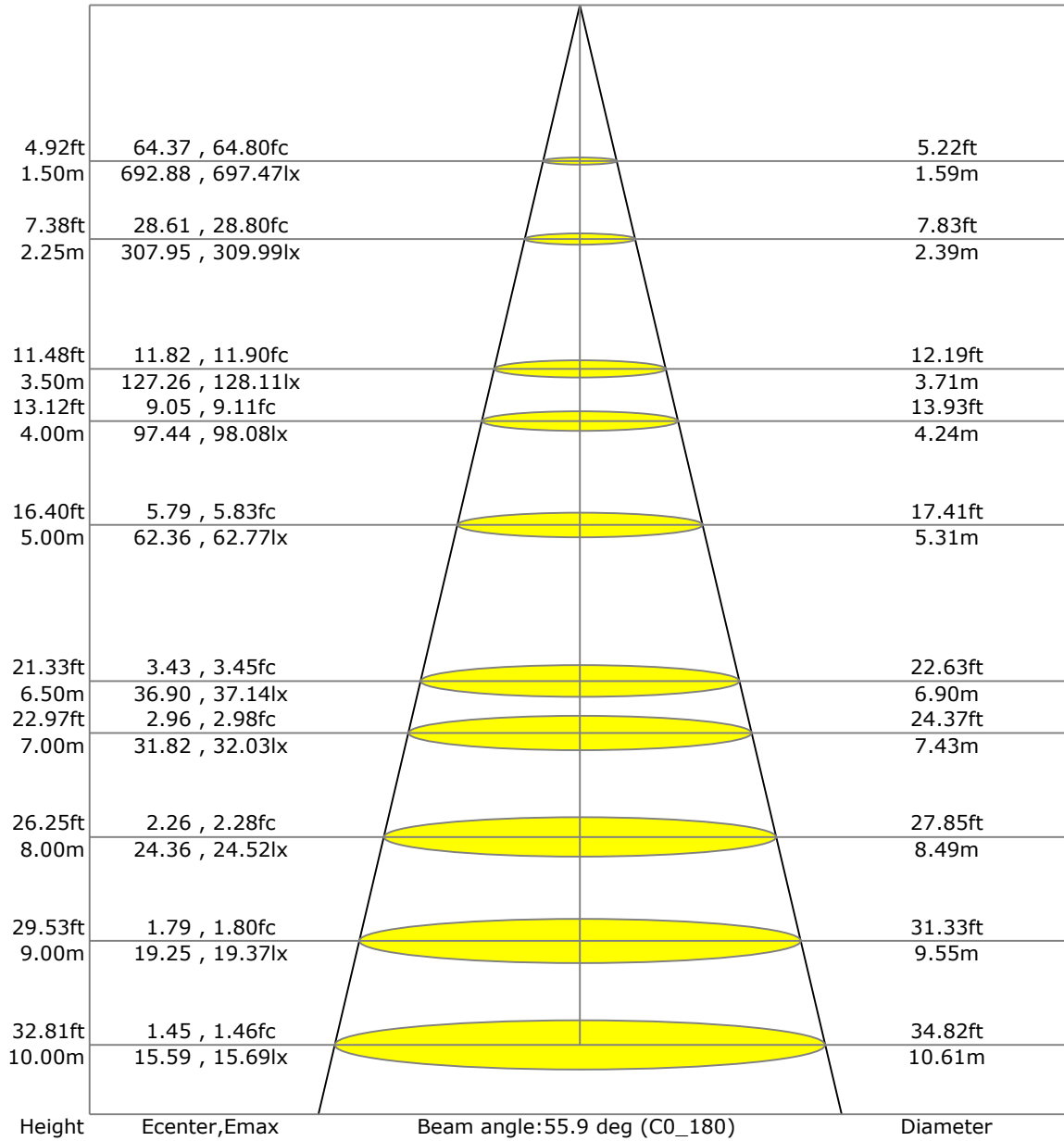
C Range: 0 - 360 Deg
 C Interval: 45.0 Deg
 Test Speed: High
 Temperature: 25
 Operators: QC01
 Test Date: 2024/5/25 11:50:08

G Range: 0 - 90 Deg
 G Interval: 1.0 Deg
 Test System: Huipu CPM-1600B Goniophotometer
 Humidity: 60
 Test Distance: 6.7 m
 Remarks:

Report No.:

Test Time: 2024/5/25 11:50:08

LX-DISTANCE DIAGRAM



C Range: 0 - 360 Deg
 C Interval: 45.0 Deg
 Test Speed: High
 Temperature: 25
 Operators: QC01
 Test Date: 2024/5/25 11:50:08

G Range: 0 - 90 Deg
 G Interval: 1.0 Deg
 Test System: Huipu CPM-1600B Goniophotometer
 Humidity: 60
 Test Distance: 6.7 m
 Remarks:

Report No.:

Test Time: 2024/5/25 11:50:08

UGR(Unified Glare Rating) TABLE

RHOCC	70	70	50	50	30	70	70	50	50	30
RHOW	50	30	50	30	30	50	30	50	30	30
RHOF	20	20	20	20	20	20	20	20	20	20
Room Size X	Viewed Endwise					Viewed Crosswise				
2H 2H	9.17	9.22	9.37	9.41	9.65	9.45	9.50	9.65	9.69	9.93
3H	9.16	9.21	9.37	9.41	9.65	9.43	9.48	9.63	9.67	9.92
4H	9.15	9.20	9.36	9.40	9.64	9.41	9.46	9.62	9.66	9.91
6H	9.13	9.18	9.35	9.38	9.63	9.39	9.45	9.61	9.65	9.90
8H	9.12	9.17	9.34	9.38	9.63	9.39	9.44	9.60	9.64	9.89
12H	9.11	9.16	9.33	9.37	9.62	9.38	9.43	9.60	9.63	9.89
4H 2H	9.26	9.31	9.47	9.50	9.75	9.72	9.77	9.93	9.96	10.21
3H	9.24	9.29	9.46	9.50	9.75	9.69	9.75	9.92	9.95	10.21
4H	9.22	9.27	9.45	9.49	9.74	9.67	9.72	9.90	9.94	10.20
6H	9.20	9.25	9.44	9.47	9.73	9.65	9.70	9.89	9.92	10.18
8H	9.19	9.24	9.43	9.46	9.73	9.64	9.69	9.88	9.91	10.18
12H	9.18	9.22	9.42	9.45	9.72	9.62	9.67	9.87	9.90	10.17
8H 4H	9.23	9.29	9.45	9.49	9.74	9.76	9.81	9.98	10.02	10.27
6H	9.17	9.21	9.42	9.45	9.72	9.70	9.75	9.96	9.98	10.26
8H	9.15	9.19	9.41	9.44	9.71	9.69	9.73	9.95	9.97	10.25
12H	9.13	9.17	9.40	9.43	9.71	9.67	9.71	9.94	9.96	10.24
12H 4H	9.18	9.22	9.43	9.46	9.72	9.76	9.81	10.01	10.04	10.31
6H	9.15	9.19	9.41	9.44	9.71	9.73	9.78	10.00	10.02	10.30

C Range: 0 - 360 Deg
 C Interval: 45.0 Deg
 Test Speed: High
 Temperature: 25
 Operators: QC01
 Test Date: 2024/5/25 11:50:08

G Range: 0 - 90 Deg
 G Interval: 1.0 Deg
 Test System: Huipu CPM-1600B Goniophotometer
 Humidity: 60
 Test Distance: 6.7 m
 Remarks:

Report No.:

Test Time: 2024/5/25 11:50:08

ZONAL LUMINOUS FLUX TABLE

Gamma [deg]	Imean [cd]	Zonal Flux [lm]	Sum Flux [lm]	Zonal Flux [%]	Sum Flux [%]
0	1552.43	0.00	0.00	0.00	0.00
5	1535.22	36.79	36.79	3.20	3.20
10	1437.75	104.95	141.74	9.14	12.34
15	1250.85	154.66	296.40	13.46	25.80
20	1065.31	183.88	480.28	16.01	41.81
25	919.35	201.10	681.38	17.51	59.32
30	693.86	195.23	876.61	17.00	76.32
35	329.49	127.39	1004.00	11.09	87.41
40	137.16	60.37	1064.37	5.26	92.66
45	63.69	30.13	1094.50	2.62	95.28
50	36.79	17.29	1111.79	1.50	96.79
55	26.48	12.71	1124.49	1.11	97.90
60	19.07	9.79	1134.28	0.85	98.75
65	11.53	6.76	1141.04	0.59	99.34
70	5.92	3.67	1144.71	0.32	99.66
75	2.88	1.91	1146.63	0.17	99.82
80	1.80	1.09	1147.71	0.09	99.92
85	0.97	0.65	1148.37	0.06	99.97
90	0.31	0.30	1148.66	0.03	100.00

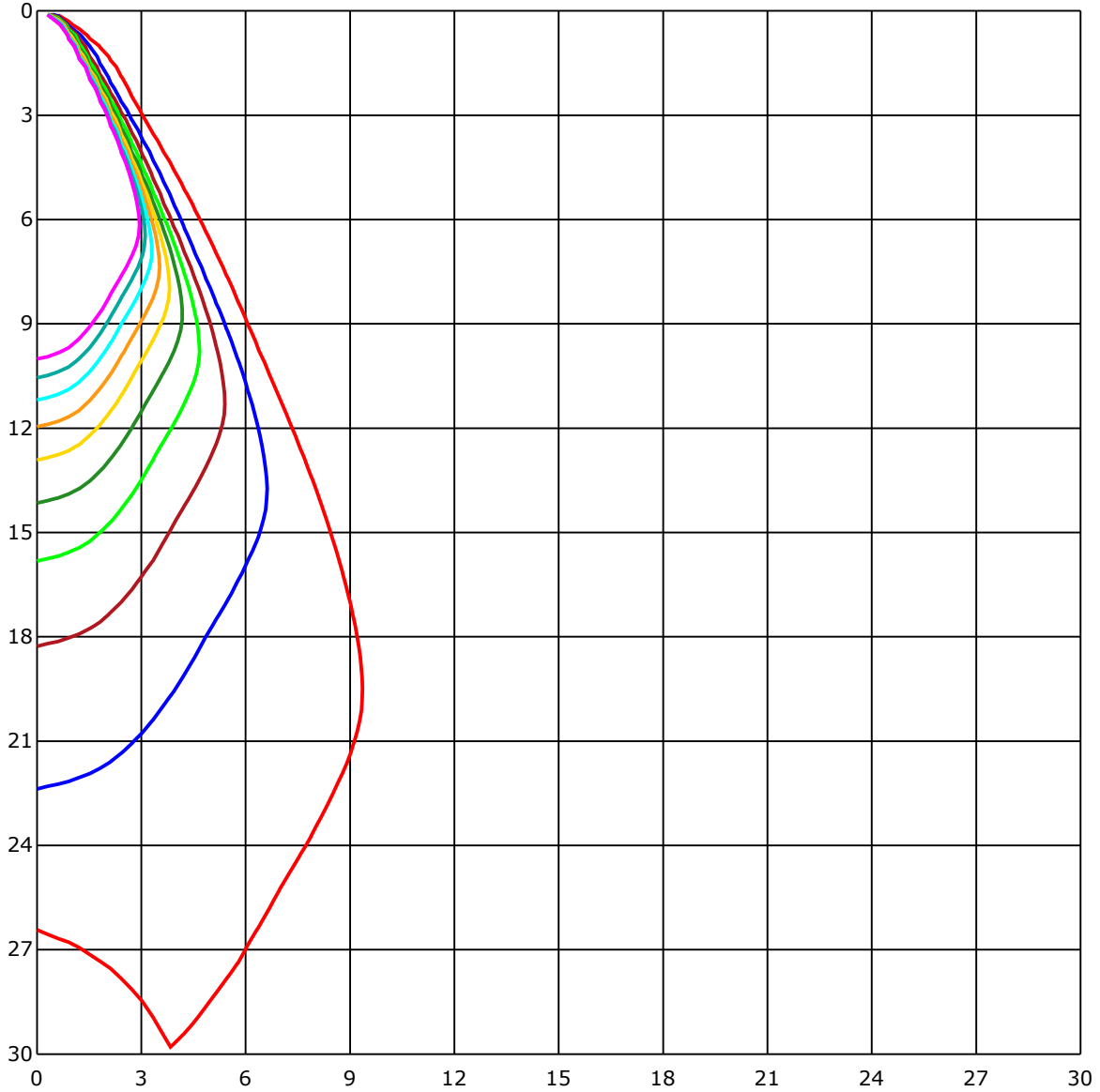
C Range: 0 - 360 Deg
 C Interval: 45.0 Deg
 Test Speed: High
 Temperature: 25
 Operators: QC01
 Test Date: 2024/5/25 11:50:08

G Range: 0 - 90 Deg
 G Interval: 1.0 Deg
 Test System: Huipu CPM-1600B Goniophotometer
 Humidity: 60
 Test Distance: 6.7 m
 Remarks:

Report No.:

Test Time: 2024/5/25 11:50:08

SPACE ISOLX DIAGRAM



Unit of illumination:lx

- | | |
|----------|---------|
| — 15.571 | — 7.785 |
| — 14.013 | — 6.228 |
| — 12.456 | — 4.671 |
| — 10.899 | — 3.114 |
| — 9.342 | — 1.557 |

C Range: 0 - 360 Deg
 C Interval: 45.0 Deg
 Test Speed: High
 Temperature: 25
 Operators: QC01
 Test Date: 2024/5/25 11:50:08

G Range: 0 - 90 Deg
 G Interval: 1.0 Deg
 Test System: Huipu CPM-1600B Goniophotometer
 Humidity: 60
 Test Distance: 6.7 m
 Remarks:

Report No.:

Test Time: 2024/5/25 11:50:08

LUMINOUS DISTRIBUTION INTENSITY DATA

Gamma\C	C0	C45	C90	C135	C180	C225	C270	C315	C360	
G0	1558.99	1542.29	1552.57	1555.89	1558.99	1542.29	1552.57	1555.89	1558.99	
G1	1546.28	1529.72	1551.53	1556.56	1562.94	1547.94	1552.97	1556.61	1546.28	
G2	1538.43	1520.87	1544.44	1554.86	1569.27	1556.29	1551.17	1550.23	1538.43	
G3	1522.53	1502.92	1542.6	1549.29	1569.09	1560.02	1549.51	1545.61	1522.53	
G4	1508.48	1486.04	1531.29	1540.98	1569.31	1561.54	1546.91	1537.21	1508.48	
G5	1487.74	1461.66	1518.14	1533.76	1565.85	1563.79	1538.61	1525.63	1487.74	
G6	1463.64	1428.62	1506.15	1519.08	1567.38	1566.71	1520.38	1508.84	1463.64	
G7	1428.09	1394.46	1486.67	1501.12	1556.43	1557.64	1503.95	1489.59	1428.09	
G8	1395.81	1357.7	1460.86	1475.62	1545.43	1548.48	1475.0	1462.61	1395.81	
G9	1358.28	1320.8	1430.64	1448.74	1525.05	1535.33	1448.87	1434.33	1358.28	
G10	1316.8	1282.06	1392.04	1415.43	1499.95	1513.29	1408.2	1397.47	1316.8	
G11	1279.14	1241.3	1351.37	1376.19	1476.57	1485.14	1373.86	1359.09	1279.14	
G12	1242.6	1202.74	1314.33	1336.02	1439.94	1457.53	1329.19	1319.54	1242.6	
G13	1198.2	1166.56	1273.22	1295.44	1405.28	1421.71	1291.04	1283.45	1198.2	
G14	1162.47	1128.8	1231.65	1248.97	1367.04	1383.02	1246.69	1238.2	1162.47	
G15	1123.91	1096.93	1195.33	1209.7	1324.75	1343.42	1202.6	1200.09	1123.91	
G16	1091.59	1066.99	1162.07	1165.17	1287.54	1304.77	1157.71	1153.45	1091.59	
G17	1061.87	1040.95	1122.83	1123.91	1244.49	1268.55	1116.15	1115.83	1061.87	
G18	1036.69	1014.2	1088.4	1076.73	1203.59	1226.4	1073.9	1077.58	1036.69	
G19	1007.38	986.23	1059.45	1040.64	1158.3	1187.03	1038.49	1044.99	1007.38	
G20	983.36	961.01	1030.45	1007.47	1115.52	1143.8	1005.81	1014.33	983.36	
G21	955.53	934.61	1005.18	980.26	1079.25	1105.28	975.5	987.76	955.53	
G22	931.83	910.23	980.8	952.03	1047.73	1070.27	945.88	961.05	931.83	
G23	904.49	882.54	953.06	923.21	1015.64	1037.36	924.02	937.3	904.49	
G24	874.91	847.48	927.74	900.81	985.83	1005.81	896.9	915.31	874.91	
G25	840.12	798.01	904.22	875.31	955.75	978.65	873.29	889.67	840.12	
G26	789.35	733.86	873.47	847.75	929.76	952.25	843.08	863.01	789.35	
G27	723.22	659.75	838.9	817.22	901.17	926.04	808.83	828.13	723.22	
G28	644.22	578.41	783.69	767.84	873.65	900.72	749.62	766.95	644.22	
G29	559.33	492.62	719.23	702.75	833.43	865.57	680.71	697.28	559.33	
G30	477.94	410.38	639.1	627.7	774.94	817.45	607.14	620.38	477.94	
G31	392.79	333.49	557.62	547.12	701.32	752.54	525.62	540.07	392.79	
G32	317.96	271.09	475.07	465.37	623.39	675.86	445.98	459.05	317.96	
G33	259.15	225.39	396.24	387.67	536.93	593.09	373.89	383.27	259.15	
G34	217.0	193.92	324.42	313.11	454.24	509.05	308.39	315.8	217.0	
G35	184.72	166.95	265.88	252.78	373.48	427.58	251.83	263.23	184.72	
G36	156.8	142.88	224.94	207.62	302.92	349.74	212.2	224.23	156.8	

C Range: 0 - 360 Deg

C Interval: 45.0 Deg

Test Speed: High

Temperature: 25

Operators: QC01

Test Date: 2024/5/25 11:50:08

G Range: 0 - 90 Deg

G Interval: 1.0 Deg

Test System: Huipu CPM-1600B Goniophotometer

Humidity: 60

Test Distance: 6.7 m

Remarks:

Report No.:

Test Time: 2024/5/25 11:50:08

LUMINOUS DISTRIBUTION INTENSITY DATA(Continue 1)

Gamma\C	C0	C45	C90	C135	C180	C225	C270	C315	C360	
G37	133.28	121.52	193.66	175.74	245.64	284.83	179.96	190.15	133.28	
G38	112.54	103.74	167.35	149.08	207.48	237.87	149.57	160.21	112.54	
G39	96.38	88.79	144.32	126.23	177.14	202.68	125.92	135.84	96.38	
G40	82.82	76.13	125.02	107.47	150.47	173.28	104.5	116.27	82.82	
G41	70.66	64.82	108.23	92.61	128.39	147.19	87.89	100.28	70.66	
G42	60.96	55.53	93.42	79.37	110.43	124.79	73.8	86.14	60.96	
G43	52.93	47.9	80.44	68.14	95.35	106.34	62.89	75.06	52.93	
G44	45.7	42.2	69.22	58.9	82.51	90.45	54.72	65.85	45.7	
G45	40.45	38.07	60.69	51.4	71.02	77.08	47.9	58.18	40.45	
G46	36.72	34.88	53.6	44.62	61.81	66.48	41.75	51.76	36.72	
G47	33.4	32.1	48.53	40.09	54.72	57.95	37.48	46.51	33.4	
G48	31.02	30.08	44.08	36.41	49.78	51.98	34.34	42.47	31.02	
G49	28.86	27.97	40.76	33.53	45.11	46.87	31.78	39.41	28.86	
G50	27.11	26.35	38.07	31.2	41.66	43.36	29.54	36.68	27.11	
G51	25.45	24.73	35.96	29.09	38.83	40.09	27.56	34.48	25.45	
G52	24.06	23.34	33.71	27.2	36.72	37.66	25.72	32.46	24.06	
G53	22.4	21.86	31.56	25.5	34.3	35.24	24.29	30.61	22.4	
G54	21.23	20.6	29.81	23.61	32.19	33.31	22.49	28.59	21.23	
G55	19.66	19.21	28.01	22.09	30.17	31.29	21.19	26.98	19.66	
G56	18.63	18.14	26.49	20.69	28.37	29.4	19.62	25.32	18.63	
G57	17.55	17.01	25.09	19.62	26.49	27.43	18.23	23.79	17.55	
G58	16.21	15.62	23.48	18.27	25.09	25.81	17.15	22.49	16.21	
G59	14.9	14.28	22.0	16.97	23.52	24.11	15.8	21.01	14.9	
G60	13.74	12.97	20.34	15.49	22.09	22.53	14.45	19.44	13.74	
G61	12.48	11.76	19.08	14.14	20.56	21.23	12.97	18.09	12.48	
G62	11.18	10.32	17.51	12.61	19.21	19.71	11.49	16.65	11.18	
G63	9.29	8.48	15.94	11.36	17.64	17.91	10.01	14.99	9.29	
G64	7.68	7.05	14.05	9.74	16.21	16.52	7.99	12.97	7.68	
G65	6.51	6.06	12.43	7.95	14.14	14.63	6.46	11.27	6.51	
G66	5.75	5.34	10.91	6.55	11.94	12.52	5.61	10.15	5.75	
G67	5.03	4.44	9.92	5.66	10.37	10.82	4.94	9.2	5.03	
G68	4.31	3.82	9.02	4.8	9.52	9.74	4.08	8.26	4.31	
G69	3.64	3.23	8.17	4.17	8.53	8.75	3.46	7.41	3.64	
G70	3.14	2.65	7.09	3.37	7.68	7.86	2.87	6.51	3.14	
G71	2.29	2.11	6.46	2.96	6.91	7.05	2.11	5.93	2.29	
G72	1.84	1.57	5.66	2.29	6.19	6.37	1.66	5.16	1.84	
G73	1.39	1.12	5.03	1.89	5.43	5.61	1.26	4.58	1.39	

C Range: 0 - 360 Deg

C Interval: 45.0 Deg

Test Speed: High

Temperature: 25

Operators: QC01

Test Date: 2024/5/25 11:50:08

G Range: 0 - 90 Deg

G Interval: 1.0 Deg

Test System: Huipu CPM-1600B Goniophotometer

Humidity: 60

Test Distance: 6.7 m

Remarks:

Report No.:

Test Time: 2024/5/25 11:50:08

LUMINOUS DISTRIBUTION INTENSITY DATA(Continue 2)

Gamma\C	C0	C45	C90	C135	C180	C225	C270	C315	C360	
G74	1.21	0.85	4.49	1.48	4.8	5.16	0.99	4.08	1.21	
G75	1.03	0.76	4.0	0.94	4.49	4.44	0.76	3.91	1.03	
G76	1.08	0.72	3.68	0.76	3.86	4.0	0.67	3.41	1.08	
G77	0.9	0.58	3.55	0.67	3.59	3.55	0.58	3.19	0.9	
G78	0.76	0.49	3.32	0.54	3.68	3.37	0.54	3.05	0.76	
G79	0.58	0.36	3.23	0.54	3.14	3.14	0.49	2.92	0.58	
G80	0.49	0.22	2.87	0.4	2.92	2.87	0.13	2.65	0.49	
G81	0.36	0.0	2.83	0.27	2.69	2.74	0.04	2.38	0.36	
G82	0.13	0.0	2.51	0.18	2.51	2.56	0.0	2.2	0.13	
G83	0.0	0.0	2.47	0.09	2.29	2.29	0.0	1.98	0.0	
G84	0.0	0.0	1.98	0.0	2.06	2.02	0.0	1.66	0.0	
G85	0.0	0.0	1.84	0.0	1.8	1.89	0.0	1.48	0.0	
G86	0.0	0.0	1.48	0.0	1.62	1.75	0.0	1.26	0.0	
G87	0.0	0.0	1.3	0.0	1.39	1.35	0.0	1.03	0.0	
G88	0.0	0.0	1.03	0.0	1.08	1.08	0.0	0.54	0.0	
G89	0.0	0.0	0.67	0.0	0.76	0.85	0.0	0.22	0.0	
G90	0.0	0.0	0.0	0.0	0.0	0.85	0.0	0.22	0.0	

C Range: 0 - 360 Deg
 C Interval: 45.0 Deg
 Test Speed: High
 Temperature: 25
 Operators: QC01
 Test Date: 2024/5/25 11:50:08

G Range: 0 - 90 Deg
 G Interval: 1.0 Deg
 Test System: Huipu CPM-1600B Goniophotometer
 Humidity: 60
 Test Distance: 6.7 m
 Remarks: