

Report No.:

Test Time: 2024/10/15 16:35:27

LUMINAIRE PHOTOMETRIC TEST REPORT

Luminaire Property

Manufacturer: InBright
 Luminaire Type: IBSP155CT085H95-24°-8W
 Lamp Type:
 Luminous Width: 65 mm
 Luminous Length: 65 mm
 Luminous Height: 70 mm

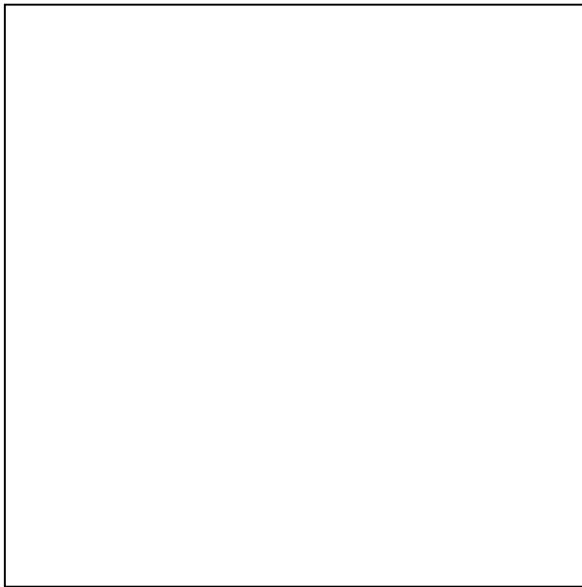
Voltage(V): 219.90 V
 Current(A): 0.0380 A
 Power(W): 7.92 W
 Power Factor: 0.9320
 Lamp Luminous Flux: 652.81

Photometric Results

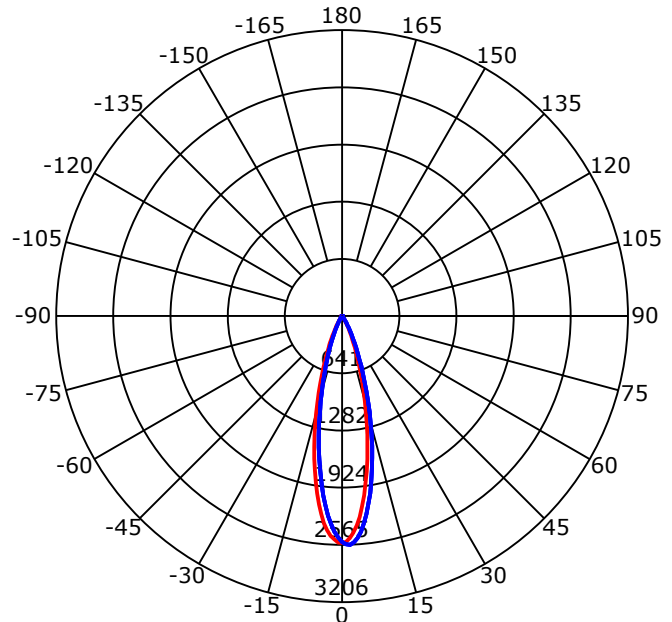
CIE Class: Direct
 Luminaire Luminous Flux: 652.8149 lm
 Downward Ratio: 100.00%
 Luminaire Efficacy Rating(LER): 82.43 lm/W
 Beam Angle(50%) C0-180,C90-270: 26.5,26.3
 Field Angle(10%) C0-180,C90-270: 50.3,49.9
 S/MH C0-180,C90-270: 0.462,0.462

Max. Intensity: 2564.83 cd
 Max.Intensity Angle: C=90 Gamma=2
 Upward Ratio: 0.00%
 Efficacy: 100.00%
 Center Intensity: 2542.20 cd
 Effective Luminous Flux: 568.77 lm
 ERP(φ use)(120deg): 650.52 lm

Picture of Luminaire



Luminous Intensity Distribution Curve



Beam Angle(50%) C0-180,C90-270: 26.5 deg,26.3 deg

C0-180 — C90-270

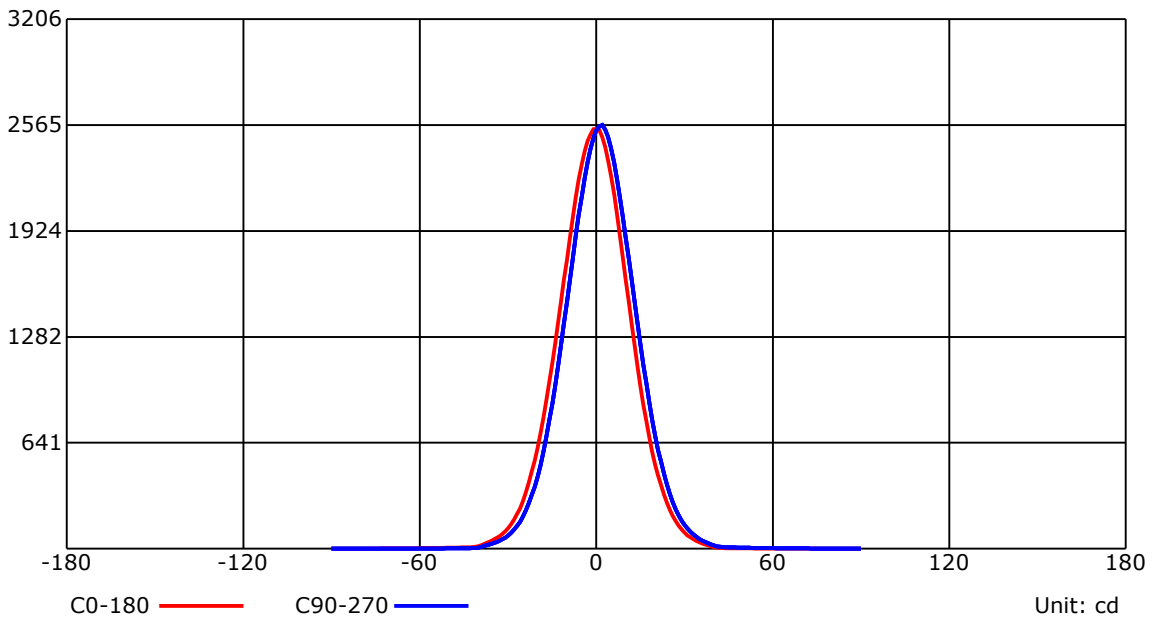
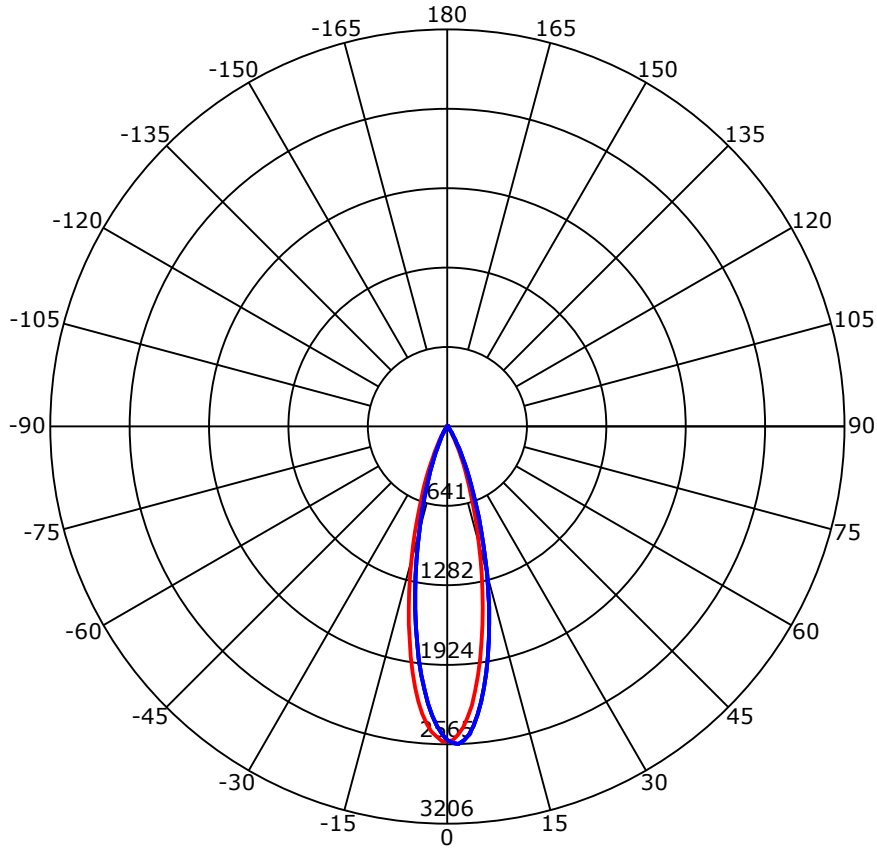
C Range: 0 - 360 Deg
 C Interval: 45.0 Deg
 Test Speed: High
 Temperature: 25
 Operators: QC01
 Test Date: 2024/10/15 16:35:27

G Range: 0 - 90 Deg
 G Interval: 1.0 Deg
 Test System: Huipu CPM-1600B Goniophotometer
 Humidity: 60
 Test Distance: 6.81 m
 Remarks:

Report No.:

Test Time: 2024/10/15 16:35:27

Luminous Intensity Distribution Curve



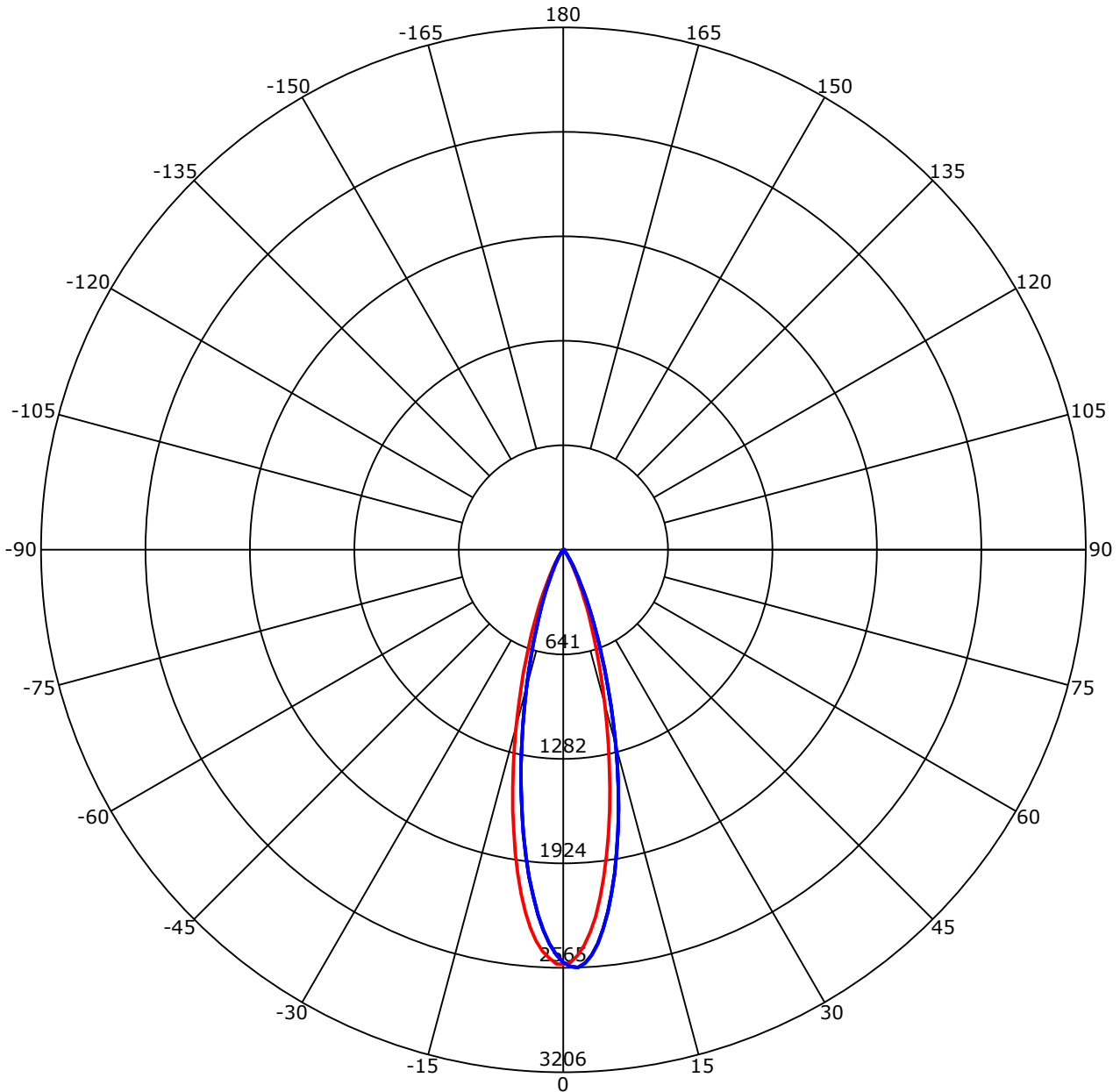
C Range: 0 - 360 Deg
 C Interval: 45.0 Deg
 Test Speed: High
 Temperature: 25
 Operators: QC01
 Test Date: 2024/10/15 16:35:27

G Range: 0 - 90 Deg
 G Interval: 1.0 Deg
 Test System: Huipu CPM-1600B Goniophotometer
 Humidity: 60
 Test Distance: 6.81 m
 Remarks:

Report No.:

Test Time: 2024/10/15 16:35:27

Luminous Intensity Distribution Curve



C0-180 — C90-270 —
 Unit: cd/klm

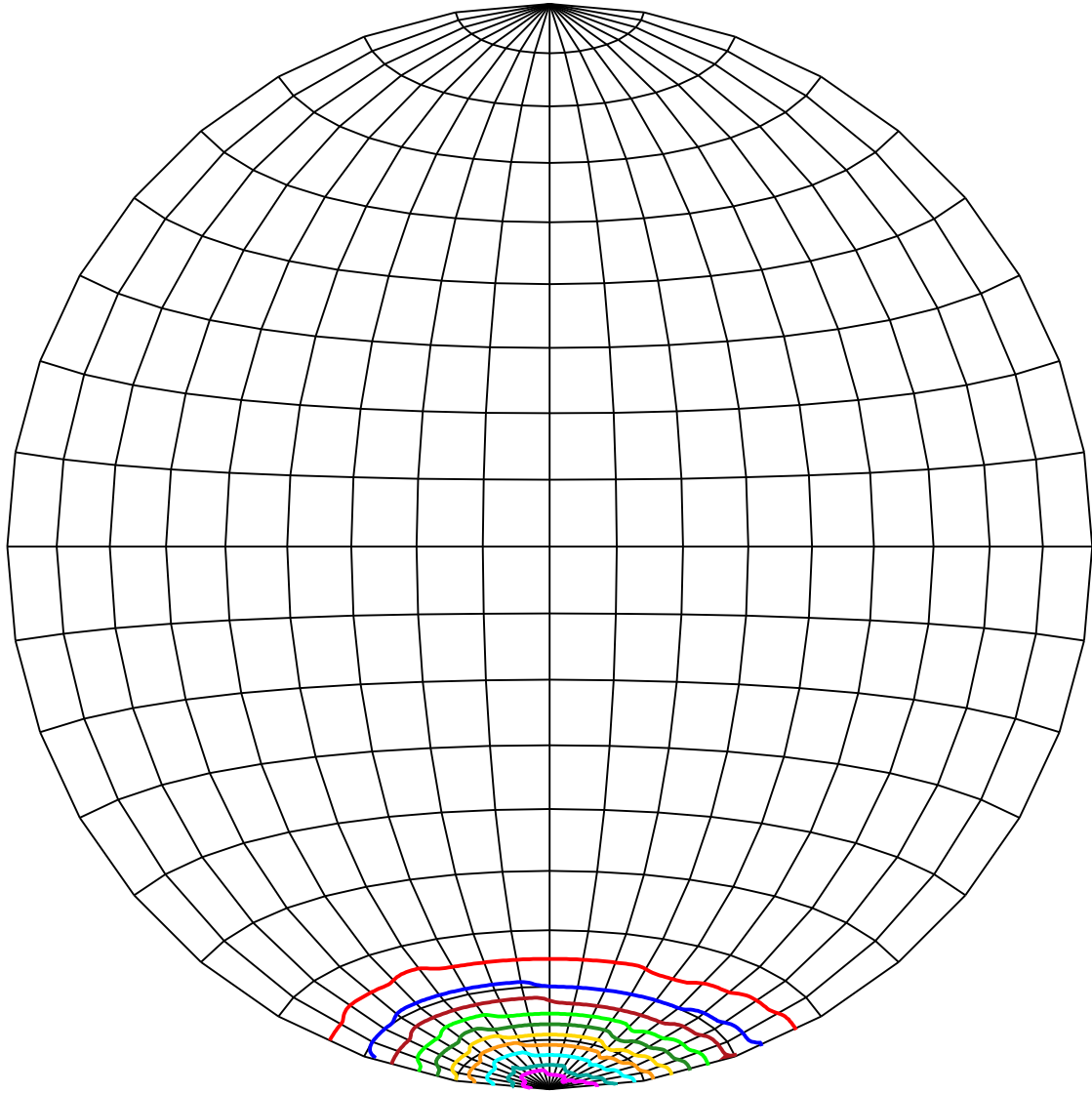
C Range: 0 - 360 Deg
 C Interval: 45.0 Deg
 Test Speed: High
 Temperature: 25
 Operators: QC01
 Test Date: 2024/10/15 16:35:27

G Range: 0 - 90 Deg
 G Interval: 1.0 Deg
 Test System: Huipu CPM-1600B Goniophotometer
 Humidity: 60
 Test Distance: 6.81 m
 Remarks:

Report No.:

Test Time: 2024/10/15 16:35:27

ISOCANDELA DIAGRAM (SPHERE)



Unit of intensity:cd I_{max}(100%): 2564.83 cd

— 2436.589(95%I _{max})	— 1282.415(50%I _{max})
— 2308.347(90%I _{max})	— 1025.932(40%I _{max})
— 2051.864(80%I _{max})	— 769.449(30%I _{max})
— 1795.381(70%I _{max})	— 512.966(20%I _{max})
— 1538.898(60%I _{max})	— 256.483(10%I _{max})

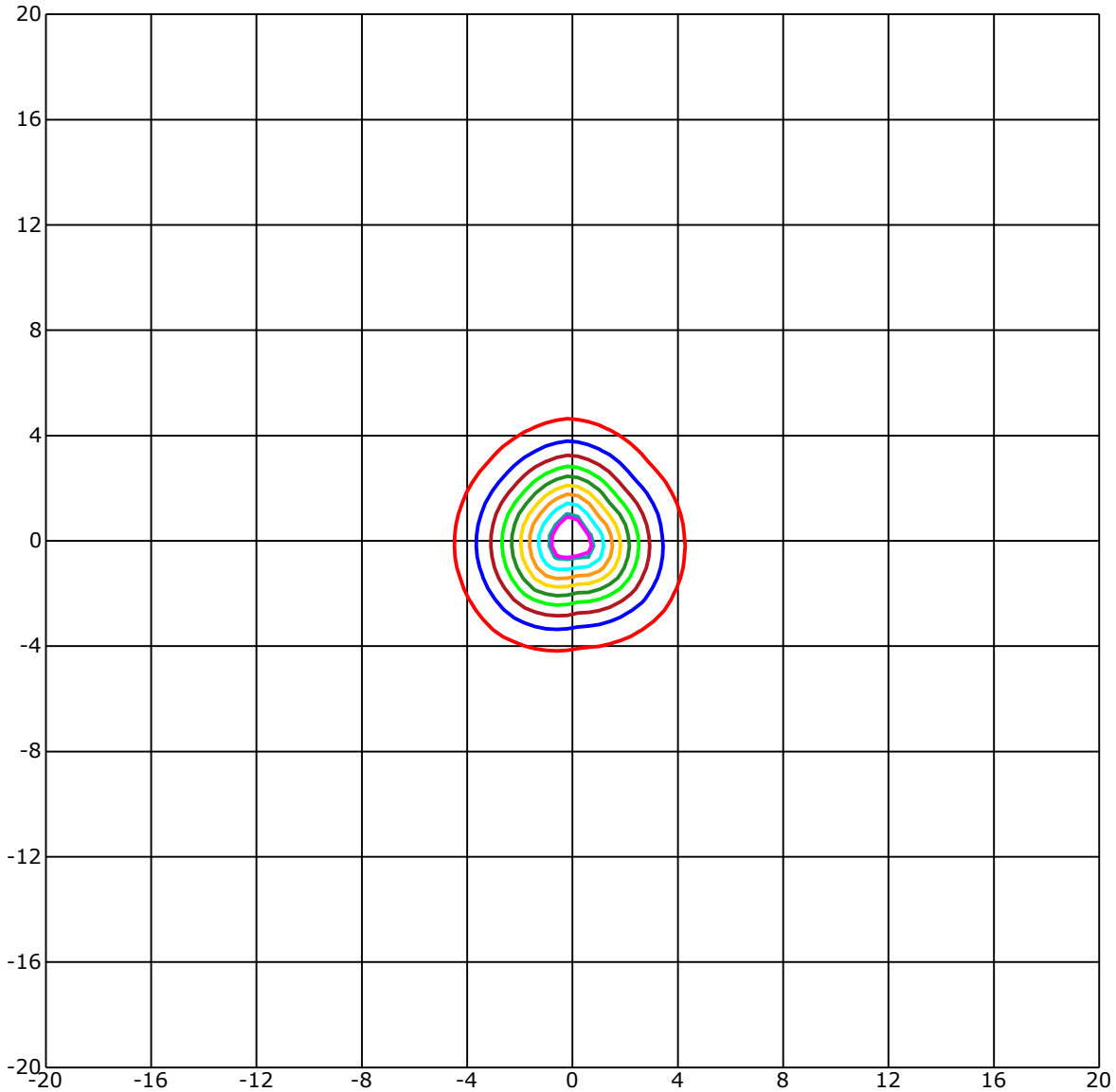
C Range: 0 - 360 Deg
 C Interval: 45.0 Deg
 Test Speed: High
 Temperature: 25
 Operators: QC01
 Test Date: 2024/10/15 16:35:27

G Range: 0 - 90 Deg
 G Interval: 1.0 Deg
 Test System: Huipu CPM-1600B Goniophotometer
 Humidity: 60
 Test Distance: 6.81 m
 Remarks:

Report No.:

Test Time: 2024/10/15 16:35:27

ISOLX DIAGRAM



Unit of illumination:lx Height of plane:10.0(m)/32.81(ft)

- | | |
|-------------------|-------------------|
| — 23.557(92%Emax) | — 12.803(50%Emax) |
| — 23.045(90%Emax) | — 10.242(40%Emax) |
| — 20.485(80%Emax) | — 7.682(30%Emax) |
| — 17.924(70%Emax) | — 5.121(20%Emax) |
| — 15.363(60%Emax) | — 2.561(10%Emax) |

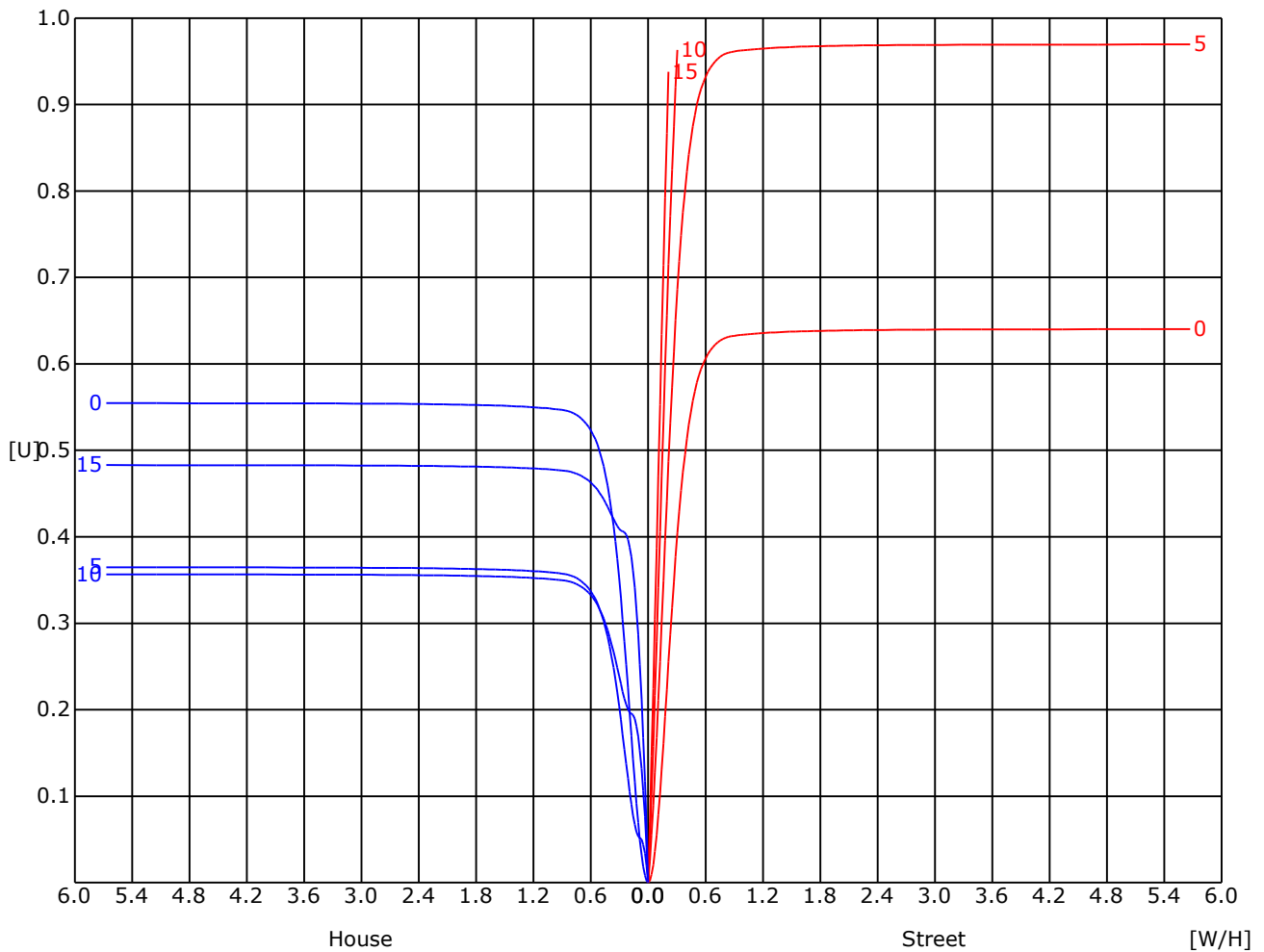
C Range: 0 - 360 Deg
 C Interval: 45.0 Deg
 Test Speed: High
 Temperature: 25
 Operators: QC01
 Test Date: 2024/10/15 16:35:27

G Range: 0 - 90 Deg
 G Interval: 1.0 Deg
 Test System: Huipu CPM-1600B Goniophotometer
 Humidity: 60
 Test Distance: 6.81 m
 Remarks:

Report No.:

Test Time: 2024/10/15 16:35:27

UTILIZATION FACTOR DIAGRAM (ROAD)



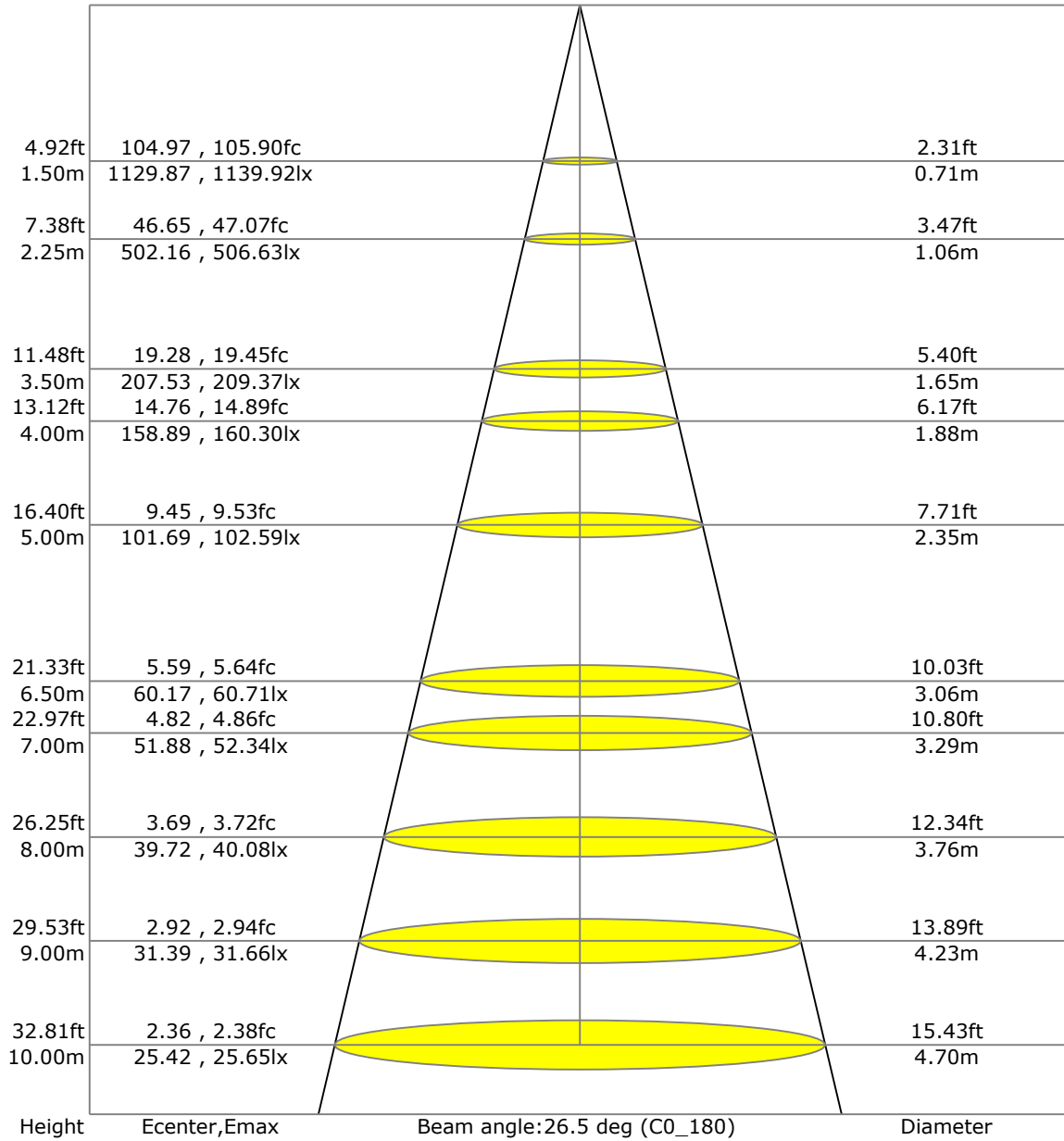
C Range: 0 - 360 Deg
 C Interval: 45.0 Deg
 Test Speed: High
 Temperature: 25
 Operators: QC01
 Test Date: 2024/10/15 16:35:27

G Range: 0 - 90 Deg
 G Interval: 1.0 Deg
 Test System: Huipu CPM-1600B Goniophotometer
 Humidity: 60
 Test Distance: 6.81 m
 Remarks:

Report No.:

Test Time: 2024/10/15 16:35:27

LX-DISTANCE DIAGRAM



C Range: 0 - 360 Deg
 C Interval: 45.0 Deg
 Test Speed: High
 Temperature: 25
 Operators: QC01
 Test Date: 2024/10/15 16:35:27

G Range: 0 - 90 Deg
 G Interval: 1.0 Deg
 Test System: Huipu CPM-1600B Goniophotometer
 Humidity: 60
 Test Distance: 6.81 m
 Remarks:

Report No.:

Test Time: 2024/10/15 16:35:27

UGR(Unified Glare Rating) TABLE

RHOCC	70	70	50	50	30	70	70	50	50	30
RHOW	50	30	50	30	30	50	30	50	30	30
RHOF	20	20	20	20	20	20	20	20	20	20
Room Size X	Viewed Endwise					Viewed Crosswise				
2H 2H	2.67	2.73	2.87	2.92	3.16	3.02	3.08	3.22	3.27	3.51
3H	2.66	2.72	2.87	2.91	3.16	3.00	3.06	3.21	3.25	3.50
4H	2.65	2.71	2.87	2.91	3.16	2.99	3.05	3.20	3.24	3.49
6H	2.64	2.70	2.86	2.90	3.15	2.97	3.03	3.19	3.23	3.49
8H	2.63	2.69	2.85	2.90	3.15	2.97	3.03	3.19	3.23	3.48
12H	2.62	2.68	2.85	2.89	3.15	2.96	3.02	3.18	3.22	3.48
4H 2H	2.66	2.72	2.87	2.91	3.16	3.37	3.43	3.58	3.62	3.87
3H	2.64	2.70	2.86	2.91	3.16	3.34	3.40	3.56	3.61	3.86
4H	2.63	2.69	2.86	2.90	3.16	3.32	3.38	3.55	3.60	3.86
6H	2.61	2.67	2.85	2.89	3.15	3.30	3.36	3.54	3.59	3.85
8H	2.60	2.65	2.84	2.88	3.15	3.29	3.35	3.54	3.58	3.85
12H	2.58	2.64	2.83	2.87	3.14	3.28	3.34	3.53	3.57	3.84
8H 4H	2.64	2.69	2.85	2.90	3.15	3.40	3.46	3.62	3.67	3.92
6H	2.57	2.63	2.83	2.87	3.14	3.33	3.39	3.58	3.62	3.90
8H	2.55	2.61	2.82	2.86	3.14	3.31	3.37	3.58	3.62	3.89
12H	2.54	2.59	2.81	2.85	3.13	3.30	3.35	3.57	3.61	3.89
12H 4H	2.58	2.64	2.83	2.87	3.14	3.34	3.40	3.59	3.63	3.90
6H	2.55	2.61	2.82	2.86	3.14	3.31	3.37	3.58	3.62	3.89

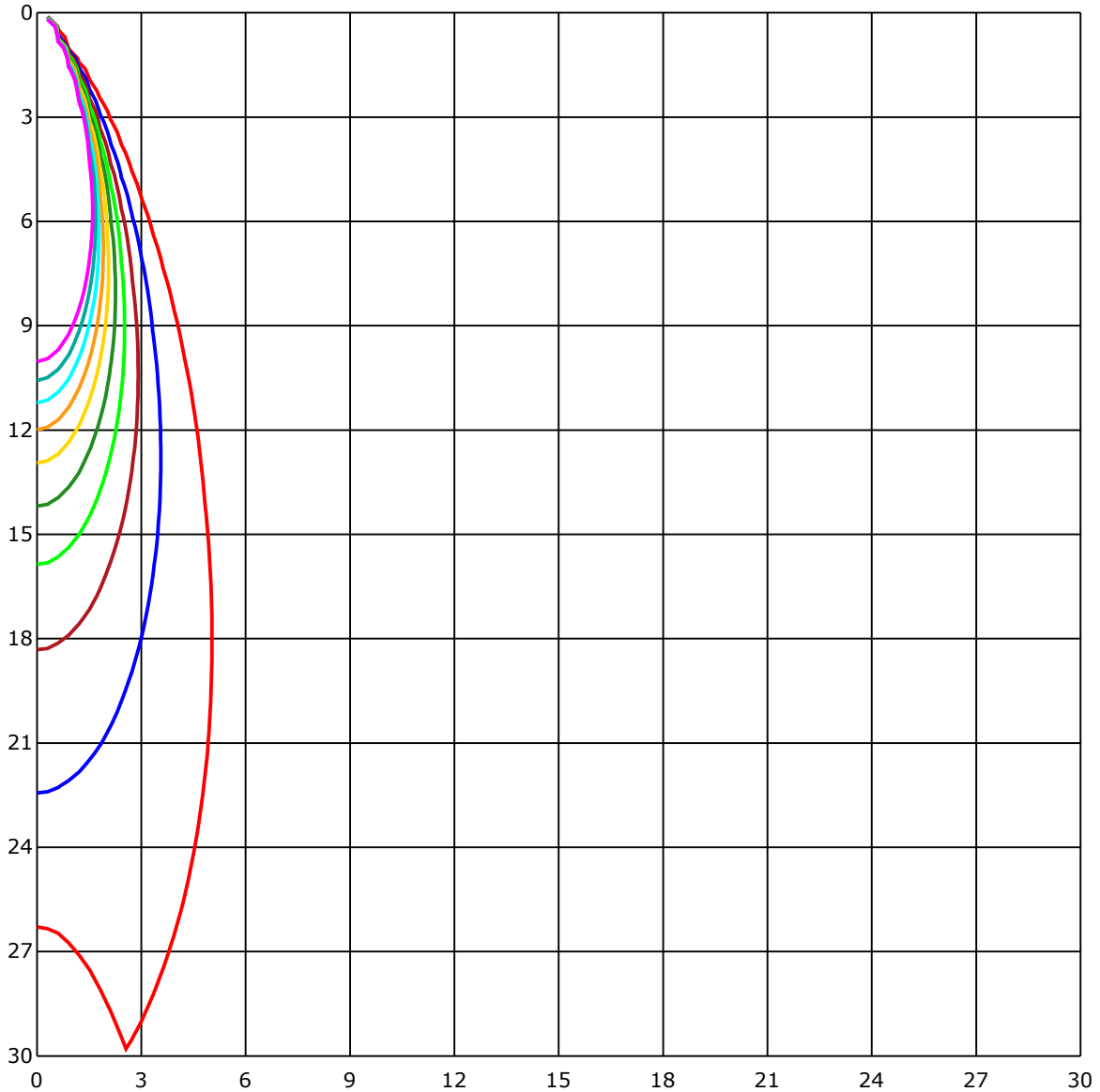
C Range: 0 - 360 Deg
 C Interval: 45.0 Deg
 Test Speed: High
 Temperature: 25
 Operators: QC01
 Test Date: 2024/10/15 16:35:27

G Range: 0 - 90 Deg
 G Interval: 1.0 Deg
 Test System: Huipu CPM-1600B Goniophotometer
 Humidity: 60
 Test Distance: 6.81 m
 Remarks:

Report No.:

Test Time: 2024/10/15 16:35:27

SPACE ISOLX DIAGRAM



Unit of illumination:lx

- | | |
|----------|----------|
| — 25.258 | — 12.629 |
| — 22.733 | — 10.103 |
| — 20.207 | — 7.578 |
| — 17.681 | — 5.052 |
| — 15.155 | — 2.526 |

C Range: 0 - 360 Deg
 C Interval: 45.0 Deg
 Test Speed: High
 Temperature: 25
 Operators: QC01
 Test Date: 2024/10/15 16:35:27

G Range: 0 - 90 Deg
 G Interval: 1.0 Deg
 Test System: Huipu CPM-1600B Goniophotometer
 Humidity: 60
 Test Distance: 6.81 m
 Remarks:

Report No.:

Test Time: 2024/10/15 16:35:27

LUMINOUS DISTRIBUTION INTENSITY DATA

Gamma\C	C0	C45	C90	C135	C180	C225	C270	C315	C360	
G0	2542.2	2511.82	2532.41	2560.56	2542.2	2511.82	2532.41	2560.56	2542.2	
G1	2533.16	2479.59	2556.62	2549.57	2540.62	2519.24	2484.04	2549.76	2533.16	
G2	2490.86	2425.19	2564.83	2514.74	2506.35	2500.23	2420.42	2521.79	2490.86	
G3	2432.38	2353.31	2538.77	2463.27	2467.21	2458.86	2337.26	2469.57	2432.38	
G4	2351.04	2266.45	2494.01	2390.22	2405.71	2407.06	2244.0	2399.64	2351.04	
G5	2260.7	2160.62	2426.58	2305.63	2328.82	2329.94	2132.05	2315.47	2260.7	
G6	2148.0	2048.2	2338.28	2201.43	2234.08	2244.42	2017.82	2207.5	2148.0	
G7	2024.92	1914.87	2237.37	2087.85	2126.85	2142.44	1893.44	2095.09	2024.92	
G8	1894.74	1786.87	2126.39	1971.45	2006.93	2040.69	1759.56	1968.02	1894.74	
G9	1765.12	1650.25	2011.01	1848.92	1883.8	1922.34	1629.38	1837.14	1765.12	
G10	1628.03	1517.1	1885.37	1718.14	1752.6	1809.46	1496.28	1702.0	1628.03	
G11	1492.11	1388.59	1754.69	1585.69	1628.17	1675.29	1363.27	1567.88	1492.11	
G12	1358.08	1261.15	1626.64	1453.29	1497.21	1546.83	1233.14	1431.26	1358.08	
G13	1231.15	1133.99	1495.44	1318.19	1370.6	1414.61	1106.58	1303.17	1231.15	
G14	1102.73	1018.09	1367.68	1190.94	1243.16	1286.75	987.67	1178.74	1102.73	
G15	984.15	906.24	1238.57	1069.94	1123.88	1162.56	876.65	1062.34	984.15	
G16	873.31	802.72	1115.95	955.58	1005.11	1044.34	773.92	946.81	873.31	
G17	770.08	706.4	998.29	849.75	895.11	932.11	675.84	838.85	770.08	
G18	673.43	618.47	885.32	749.72	791.73	826.47	586.19	738.68	673.43	
G19	583.88	538.47	778.24	655.29	698.15	727.18	504.85	643.0	583.88	
G20	507.82	468.12	684.74	573.25	611.19	637.16	434.45	556.61	507.82	
G21	443.68	403.1	597.74	495.11	533.93	552.01	375.41	482.87	443.68	
G22	382.37	343.79	522.94	425.92	463.2	478.83	322.13	417.8	382.37	
G23	325.79	292.63	452.82	363.87	398.42	412.84	273.34	358.9	325.79	
G24	276.87	248.02	388.45	308.45	338.87	351.95	230.77	306.59	276.87	
G25	235.96	206.05	332.7	260.77	286.79	300.05	194.64	261.7	235.96	
G26	197.42	171.04	281.6	218.85	243.15	256.92	162.27	222.14	197.42	
G27	165.05	144.69	235.13	183.0	207.21	218.99	135.33	187.87	165.05	
G28	137.6	121.51	199.32	153.37	174.98	185.18	113.99	157.63	137.6	
G29	115.89	100.54	169.64	127.95	148.17	156.98	96.09	134.4	115.89	
G30	96.79	83.76	144.28	106.06	124.94	133.84	80.6	114.5	96.79	
G31	80.37	69.89	122.2	87.93	104.95	113.62	67.01	97.39	80.37	
G32	67.76	58.8	102.26	71.98	88.21	96.6	56.35	82.46	67.76	
G33	57.69	49.02	85.42	59.59	74.8	81.48	47.58	70.07	57.69	
G34	47.4	40.07	71.93	49.81	63.95	69.29	39.88	60.57	47.4	
G35	39.23	32.88	59.59	40.3	54.31	58.67	33.48	51.66	39.23	
G36	32.19	26.25	49.81	32.28	44.89	50.32	27.59	43.27	32.19	

C Range: 0 - 360 Deg
 C Interval: 45.0 Deg
 Test Speed: High
 Temperature: 25
 Operators: QC01
 Test Date: 2024/10/15 16:35:27

G Range: 0 - 90 Deg
 G Interval: 1.0 Deg
 Test System: Huipu CPM-1600B Goniophotometer
 Humidity: 60
 Test Distance: 6.81 m
 Remarks:

Report No.:

Test Time: 2024/10/15 16:35:27

LUMINOUS DISTRIBUTION INTENSITY DATA(Continue 1)

Gamma\C	C0	C45	C90	C135	C180	C225	C270	C315	C360	
G37	26.2	19.2	41.46	24.86	37.01	42.43	21.89	36.45	26.2	
G38	20.41	13.22	34.13	16.51	29.63	35.85	17.34	30.61	20.41	
G39	14.38	8.07	26.16	9.74	21.98	29.73	11.55	25.23	14.38	
G40	9.14	5.43	19.01	5.94	15.63	23.14	7.1	19.34	9.14	
G41	5.8	3.99	14.05	4.08	12.29	16.97	4.78	14.56	5.8	
G42	4.22	3.29	11.55	3.25	10.25	12.85	3.76	11.64	4.22	
G43	3.48	2.83	9.83	2.78	9.23	10.67	3.15	9.97	3.48	
G44	3.11	2.6	8.95	2.5	8.44	9.51	2.97	9.0	3.11	
G45	2.97	2.41	8.25	2.23	7.98	8.67	2.55	8.39	2.97	
G46	2.64	2.13	7.74	1.9	7.47	7.98	2.5	7.79	2.64	
G47	2.32	2.04	7.33	1.81	7.0	7.42	2.23	7.28	2.32	
G48	2.18	1.86	6.96	1.62	6.59	7.14	2.13	6.86	2.18	
G49	1.99	1.67	6.59	1.62	6.31	6.72	1.95	6.63	1.99	
G50	1.86	1.58	6.12	1.39	5.75	6.35	1.95	6.31	1.86	
G51	1.72	1.34	5.7	1.25	5.47	6.03	1.72	5.89	1.72	
G52	1.62	1.34	5.43	1.07	5.19	5.61	1.48	5.61	1.62	
G53	1.58	1.21	5.1	1.09	4.92	5.29	1.21	5.43	1.58	
G54	1.39	1.21	4.82	1.11	4.68	5.01	1.25	5.1	1.39	
G55	1.34	1.02	4.73	1.07	4.41	4.82	1.11	4.87	1.34	
G56	1.25	1.02	4.41	0.88	4.22	4.73	1.25	4.54	1.25	
G57	1.3	0.79	4.27	0.74	4.08	4.36	1.11	4.36	1.3	
G58	1.16	0.74	4.03	0.74	3.85	4.22	1.02	4.22	1.16	
G59	1.11	0.79	3.71	0.74	3.62	3.94	0.83	4.08	1.11	
G60	0.93	0.65	3.62	0.56	3.48	3.85	0.83	3.8	0.93	
G61	0.97	0.65	3.29	0.56	3.39	3.57	0.74	3.62	0.97	
G62	0.88	0.65	3.25	0.46	3.2	3.52	0.74	3.52	0.88	
G63	0.74	0.37	3.01	0.46	2.92	3.34	0.7	3.34	0.74	
G64	0.65	0.32	2.83	0.46	2.83	3.39	0.6	3.25	0.65	
G65	0.74	0.28	2.69	0.19	2.74	3.01	0.51	3.06	0.74	
G66	0.56	0.23	2.5	0.05	2.5	2.88	0.37	2.83	0.56	
G67	0.42	0.05	2.27	0.0	2.37	2.74	0.23	2.6	0.42	
G68	0.35	0.0	2.13	0.0	2.18	2.55	0.19	2.37	0.35	
G69	0.28	0.0	1.95	0.0	2.04	2.37	0.0	2.18	0.28	
G70	0.14	0.0	1.86	0.0	1.86	2.13	0.0	1.99	0.14	
G71	0.0	0.0	1.76	0.0	1.72	1.99	0.0	1.99	0.0	
G72	0.0	0.0	1.72	0.0	1.58	1.81	0.0	1.81	0.0	
G73	0.0	0.0	1.25	0.0	1.53	1.67	0.0	1.58	0.0	

C Range: 0 - 360 Deg
 C Interval: 45.0 Deg
 Test Speed: High
 Temperature: 25
 Operators: QC01
 Test Date: 2024/10/15 16:35:27

G Range: 0 - 90 Deg
 G Interval: 1.0 Deg
 Test System: Huipu CPM-1600B Goniophotometer
 Humidity: 60
 Test Distance: 6.81 m
 Remarks:

LUMINOUS DISTRIBUTION INTENSITY DATA(Continue 2)

Gamma\C	C0	C45	C90	C135	C180	C225	C270	C315	C360	
G74	0.0	0.0	1.11	0.0	1.16	1.62	0.0	1.44	0.0	
G75	0.0	0.0	0.93	0.0	1.16	1.3	0.0	1.34	0.0	
G76	0.0	0.0	0.83	0.0	0.83	1.34	0.0	1.11	0.0	
G77	0.0	0.0	0.79	0.0	0.74	1.18	0.0	0.97	0.0	
G78	0.0	0.0	0.65	0.0	0.6	1.02	0.0	0.79	0.0	
G79	0.0	0.0	0.51	0.0	0.6	0.83	0.0	0.7	0.0	
G80	0.0	0.0	0.28	0.0	0.46	0.65	0.0	0.6	0.0	
G81	0.0	0.0	0.19	0.0	0.23	0.51	0.0	0.42	0.0	
G82	0.0	0.0	0.05	0.0	0.0	0.46	0.0	0.28	0.0	
G83	0.0	0.0	0.0	0.0	0.0	0.23	0.0	0.09	0.0	
G84	0.0	0.0	0.0	0.0	0.0	0.14	0.0	0.0	0.0	
G85	0.0	0.0	0.0	0.0	0.0	0.05	0.0	0.0	0.0	
G86	0.0	0.0	0.0	0.0	0.0	0.0	0.0	0.0	0.0	
G87	0.0	0.0	0.0	0.0	0.0	0.0	0.0	0.0	0.0	
G88	0.0	0.0	0.0	0.0	0.0	0.0	0.0	0.0	0.0	
G89	0.0	0.0	0.0	0.0	0.0	0.0	0.0	0.0	0.0	
G90	0.0	0.0	0.0	0.0	0.0	0.0	0.0	0.0	0.0	