

Report No.:

Test Time: 2024/7/22 14:38:59

LUMINAIRE PHOTOMETRIC TEST REPORT

Luminaire Property

Manufacturer: InBright
 Luminaire Type: IBSP104SCT095H98-15°-15W
 Lamp Type:
 Luminous Width: 90 mm
 Luminous Length: 90 mm
 Luminous Height: 74 mm

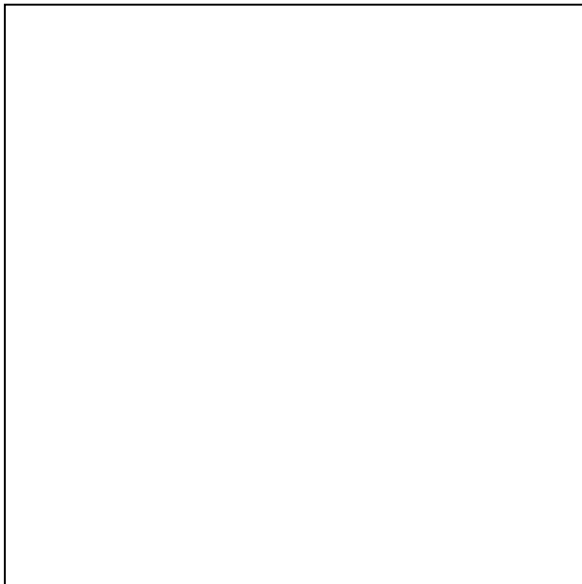
Voltage(V): 219.80 V
 Current(A): 0.0720 A
 Power(W): 15.04 W
 Power Factor: 0.9490
 Lamp Luminous Flux: 1434.29

Photometric Results

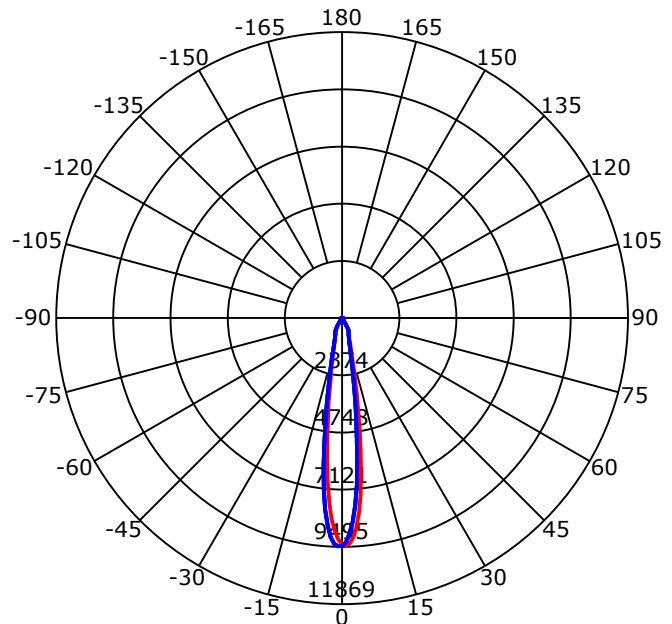
CIE Class: Direct
 Luminaire Luminous Flux: 1434.294 lm
 Downward Ratio: 100.00%
 Luminaire Efficacy Rating(LER): 95.37 lm/W
 Beam Angle(50%) C0-180,C90-270: 16.3,16.1
 Field Angle(10%) C0-180,C90-270: 37.7,36.6
 S/MH C0-180,C90-270: 0.317,0.281

Max. Intensity: 9495.27 cd
 Max.Intensity Angle: C=315 Gamma=2
 Upward Ratio: 0.00%
 Efficacy: 100.00%
 Center Intensity: 9389.55 cd
 Effective Luminous Flux: 957.49 lm
 ERP(ϕ use)(120deg): 1429.16 lm

Picture of Luminaire



Luminous Intensity Distribution Curve



Beam Angle(50%) C0-180,C90-270: 16.3 deg,16.1 deg

C0-180 — C90-270 —

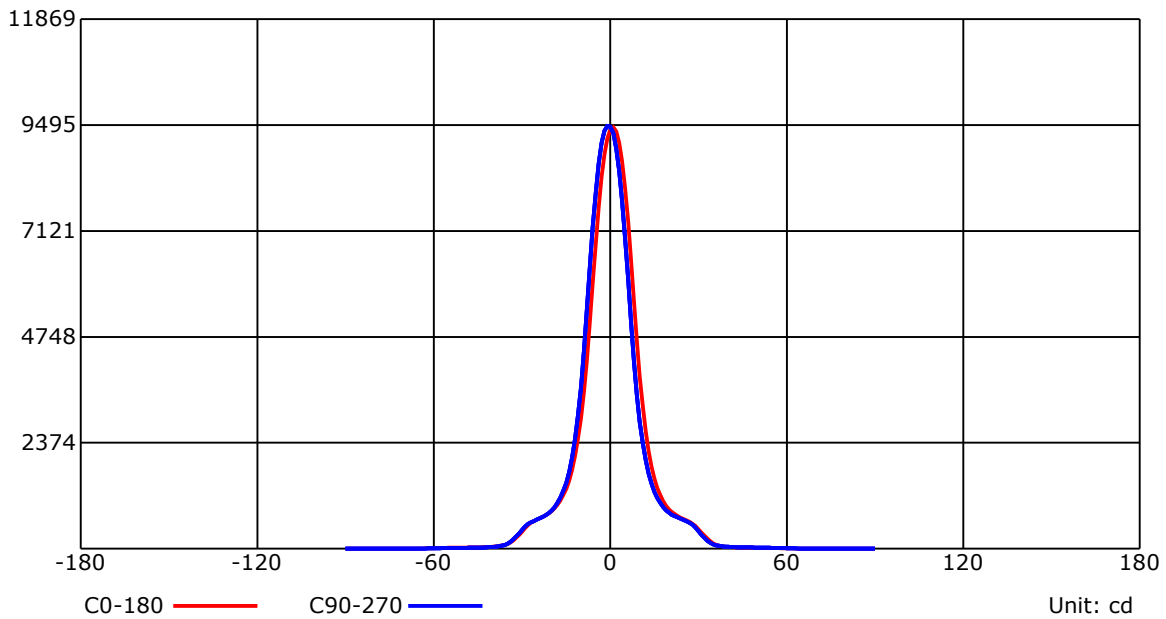
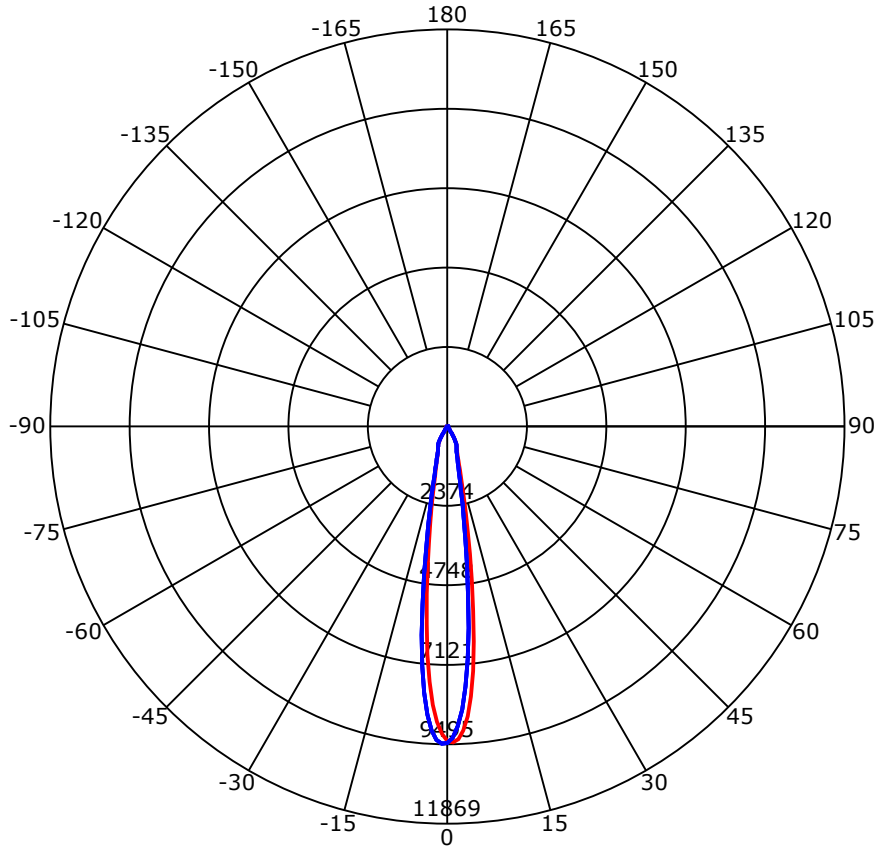
C Range: 0 - 360 Deg
 C Interval: 45.0 Deg
 Test Speed: High
 Temperature: 25
 Operators: QC01
 Test Date: 2024/7/22 14:38:59

G Range: 0 - 90 Deg
 G Interval: 1.0 Deg
 Test System: Huipu CPM-1600B Goniophotometer
 Humidity: 60
 Test Distance: 6.7 m
 Remarks:

Report No.:

Test Time: 2024/7/22 14:38:59

Luminous Intensity Distribution Curve



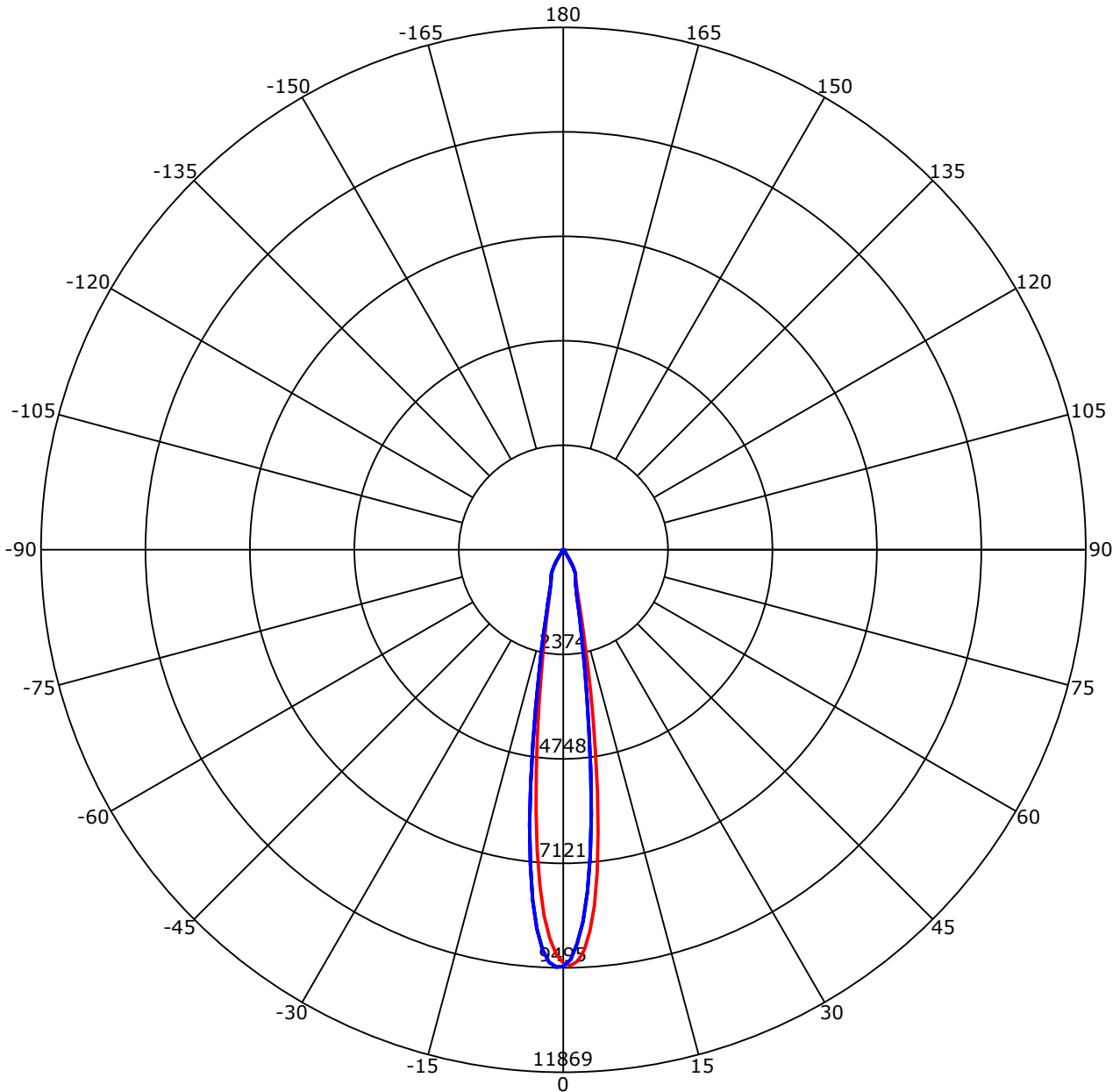
C Range: 0 - 360 Deg
 C Interval: 45.0 Deg
 Test Speed: High
 Temperature: 25
 Operators: QC01
 Test Date: 2024/7/22 14:38:59

G Range: 0 - 90 Deg
 G Interval: 1.0 Deg
 Test System: Huipu CPM-1600B Goniophotometer
 Humidity: 60
 Test Distance: 6.7 m
 Remarks:

Report No.:

Test Time: 2024/7/22 14:38:59

Luminous Intensity Distribution Curve



C0-180 — C90-270 —
 Unit: cd/klm

C Range: 0 - 360 Deg
 C Interval: 45.0 Deg
 Test Speed: High
 Temperature: 25
 Operators: QC01
 Test Date: 2024/7/22 14:38:59

G Range: 0 - 90 Deg
 G Interval: 1.0 Deg
 Test System: Huipu CPM-1600B Goniophotometer
 Humidity: 60
 Test Distance: 6.7 m
 Remarks:

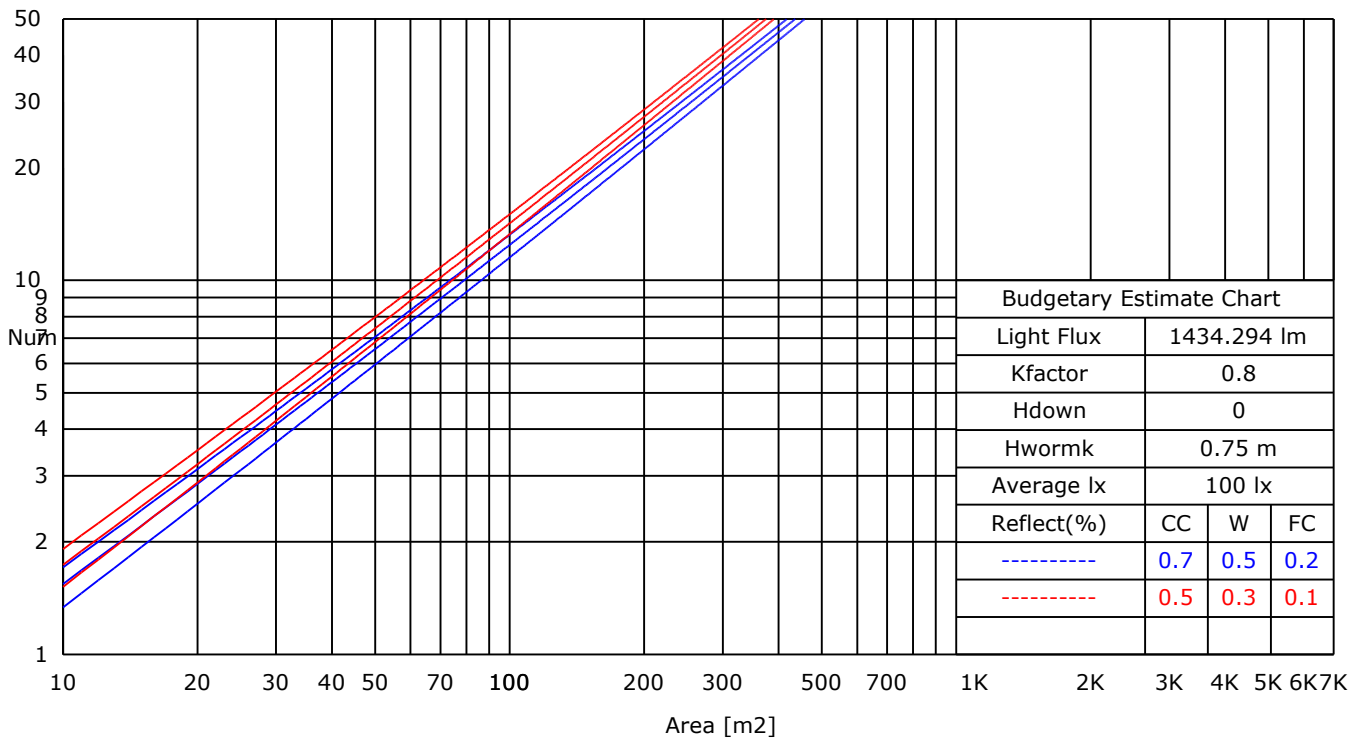
Report No.:

Test Time: 2024/7/22 14:38:59

UTILIZATION FACTORS TABLE

RHOCC	80			70			50			30			10			0
RHOW	50	30	10	50	30	10	50	30	10	50	30	10	50	30	10	0
RCR	COEFFICIENTS OF UTILIZATION FOR RHOFC=20															
0	1.19	1.19	1.19	1.16	1.16	1.16	1.11	1.11	1.11	1.06	1.06	1.06	1.02	1.02	1.02	1.00
1	0.80	0.75	0.72	0.80	0.75	0.71	0.78	0.73	0.68	0.75	0.70	0.65	0.71	0.65	0.60	0.55
2	0.76	0.72	0.69	0.76	0.72	0.68	0.75	0.70	0.66	0.72	0.67	0.62	0.69	0.63	0.58	0.54
3	0.73	0.69	0.67	0.73	0.69	0.66	0.72	0.67	0.63	0.70	0.65	0.60	0.67	0.61	0.57	0.52
4	0.70	0.67	0.65	0.70	0.67	0.64	0.69	0.65	0.61	0.68	0.63	0.58	0.65	0.60	0.55	0.51
5	0.68	0.65	0.64	0.68	0.65	0.62	0.67	0.63	0.60	0.66	0.61	0.57	0.64	0.58	0.54	0.50
6	0.66	0.64	0.62	0.66	0.63	0.61	0.65	0.61	0.58	0.64	0.59	0.55	0.62	0.57	0.52	0.49
7	0.64	0.62	0.61	0.64	0.61	0.59	0.63	0.60	0.57	0.62	0.58	0.54	0.61	0.55	0.51	0.48
8	0.63	0.61	0.60	0.62	0.60	0.58	0.62	0.58	0.56	0.61	0.56	0.53	0.59	0.54	0.50	0.47
9	0.61	0.59	0.58	0.61	0.59	0.57	0.60	0.57	0.54	0.59	0.55	0.52	0.58	0.53	0.49	0.46
10	0.60	0.58	0.57	0.60	0.57	0.56	0.59	0.56	0.53	0.58	0.54	0.51	0.57	0.52	0.48	0.45

LUMINAIRE BUDGETARY ESTIMATE DIAGRAM



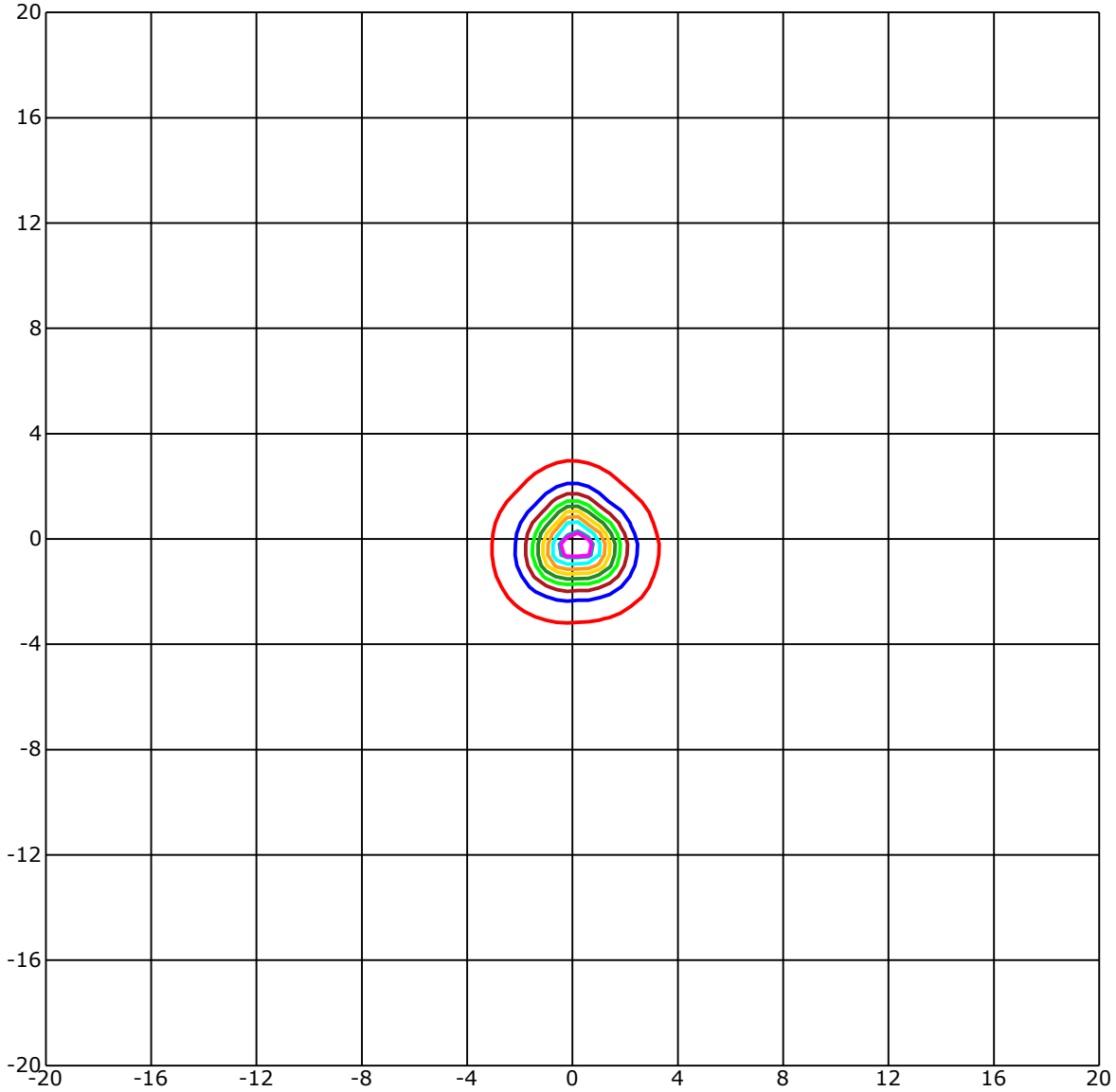
C Range: 0 - 360 Deg
 C Interval: 45.0 Deg
 Test Speed: High
 Temperature: 25
 Operators: QC01
 Test Date: 2024/7/22 14:38:59

G Range: 0 - 90 Deg
 G Interval: 1.0 Deg
 Test System: Huipu CPM-1600B Goniophotometer
 Humidity: 60
 Test Distance: 6.7 m
 Remarks:

Report No.:

Test Time: 2024/7/22 14:38:59

ISOLX DIAGRAM



Unit of illumination:lx Height of plane:10.0(m)/32.81(ft)

— 87.197(92%Emax)	— 47.39(50%Emax)
— 85.301(90%Emax)	— 37.912(40%Emax)
— 75.823(80%Emax)	— 28.434(30%Emax)
— 66.345(70%Emax)	— 18.956(20%Emax)
— 56.868(60%Emax)	— 9.478(10%Emax)

C Range: 0 - 360 Deg
 C Interval: 45.0 Deg
 Test Speed: High
 Temperature: 25
 Operators: QC01
 Test Date: 2024/7/22 14:38:59

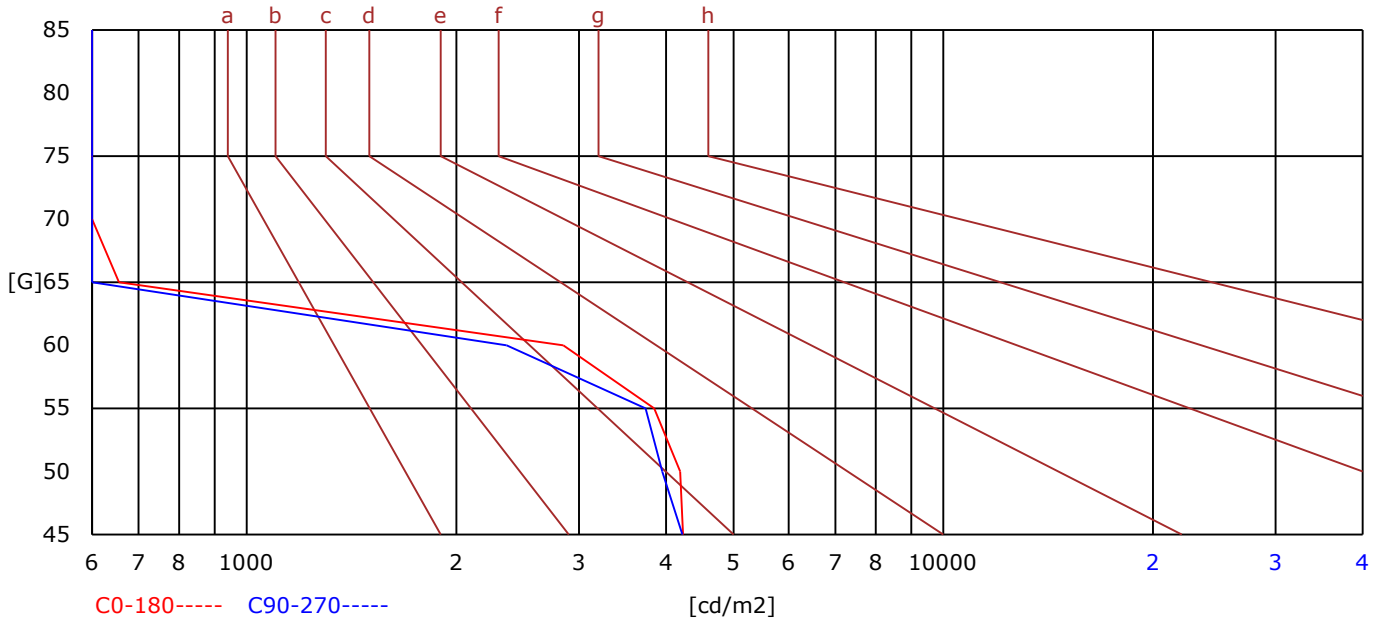
G Range: 0 - 90 Deg
 G Interval: 1.0 Deg
 Test System: Huipu CPM-1600B Goniophotometer
 Humidity: 60
 Test Distance: 6.7 m
 Remarks:

Report No.:

Test Time: 2024/7/22 14:38:59

BRIGHT LIMIT DIAGRAM

C/G	45	50	55	60	65	70	75	80	85
C0	4232	4190	3846	2849	656	0	0	0	0
C90	4224	3949	3739	2361	446	0	0	0	0
Dazzle	Quality	Illuminance	---	---	---	---	---	---	---
1.15	A	2000	1000	500	<=300				
1.5	B		2000	1000	500	<=300			
1.85	C			2000	1000	500	<=300		
2.2	D				2000	1000	500	<=300	
2.55	E					2000	1000	500	<=300
---	---	a	b	c	d	e	f	g	h



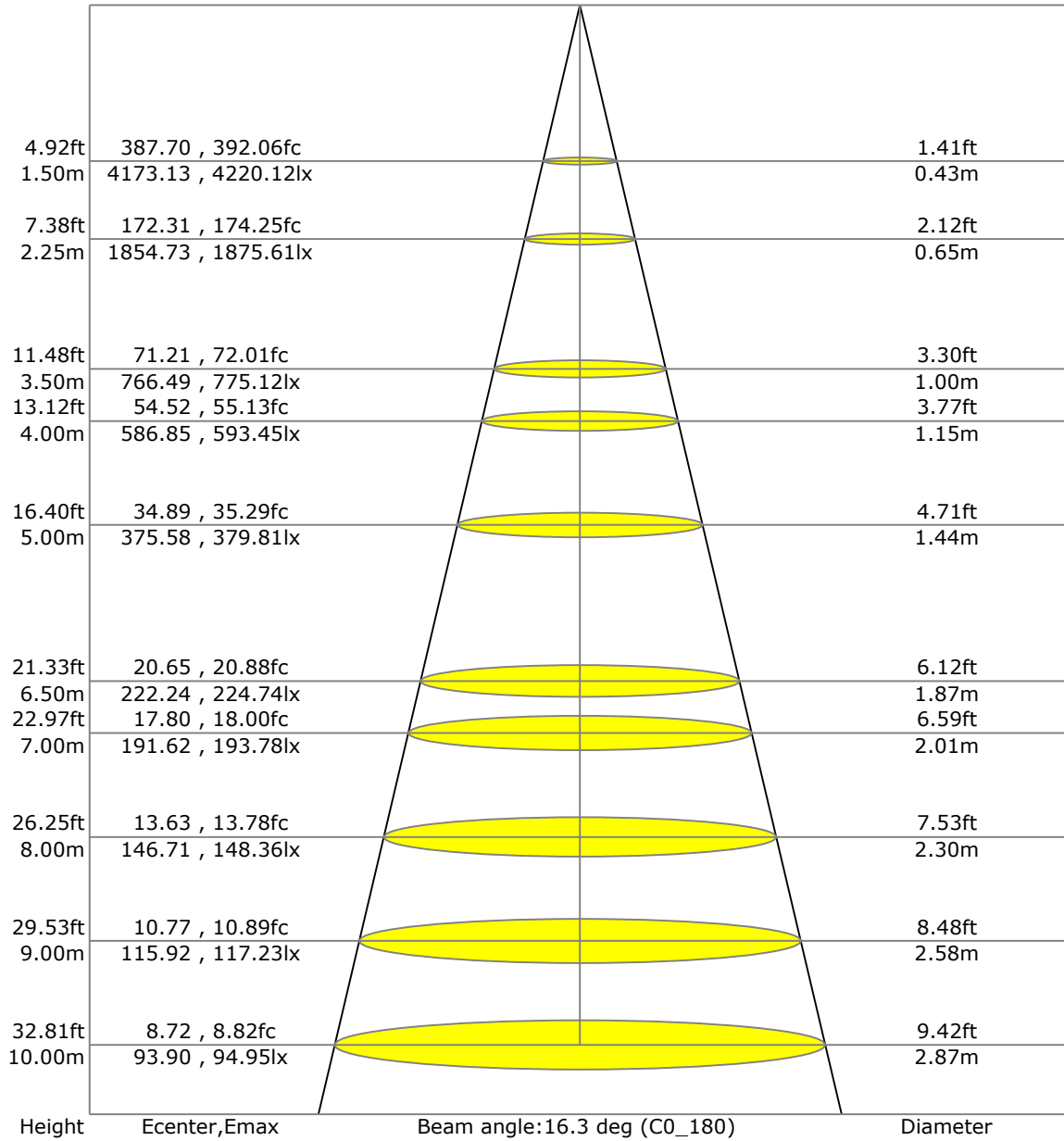
C Range: 0 - 360 Deg
 C Interval: 45.0 Deg
 Test Speed: High
 Temperature: 25
 Operators: QC01
 Test Date: 2024/7/22 14:38:59

G Range: 0 - 90 Deg
 G Interval: 1.0 Deg
 Test System: Huipu CPM-1600B Goniophotometer
 Humidity: 60
 Test Distance: 6.7 m
 Remarks:

Report No.:

Test Time: 2024/7/22 14:38:59

LX-DISTANCE DIAGRAM



C Range: 0 - 360 Deg

C Interval: 45.0 Deg

Test Speed: High

Temperature: 25

Operators: QC01

Test Date: 2024/7/22 14:38:59

G Range: 0 - 90 Deg

G Interval: 1.0 Deg

Test System: Huipu CPM-1600B Goniophotometer

Humidity: 60

Test Distance: 6.7 m

Remarks:

Report No.:

Test Time: 2024/7/22 14:38:59

UGR(Unified Glare Rating) TABLE

RHOCC	70	70	50	50	30	70	70	50	50	30
RHOW	50	30	50	30	30	50	30	50	30	30
RHOF	20	20	20	20	20	20	20	20	20	20
Room Size X Y	Viewed Endwise					Viewed Crosswise				
2H 2H	3.56	3.62	3.76	3.81	4.05	3.87	3.94	4.07	4.13	4.37
3H	3.53	3.60	3.74	3.79	4.04	3.84	3.91	4.05	4.11	4.35
4H	3.52	3.59	3.73	3.78	4.03	3.83	3.90	4.04	4.10	4.35
6H	3.50	3.57	3.72	3.77	4.02	3.81	3.88	4.03	4.09	4.34
8H	3.49	3.56	3.71	3.77	4.02	3.80	3.88	4.02	4.08	4.33
12H	3.48	3.55	3.70	3.76	4.02	3.79	3.87	4.02	4.07	4.33
4H 2H	3.54	3.61	3.75	3.80	4.05	3.88	3.95	4.09	4.15	4.40
3H	3.50	3.58	3.73	3.78	4.04	3.85	3.92	4.07	4.13	4.38
4H	3.48	3.56	3.71	3.77	4.03	3.83	3.90	4.06	4.11	4.37
6H	3.46	3.53	3.70	3.75	4.02	3.80	3.88	4.04	4.10	4.36
8H	3.45	3.52	3.69	3.75	4.01	3.79	3.86	4.04	4.09	4.36
12H	3.43	3.50	3.68	3.74	4.01	3.78	3.85	4.03	4.08	4.35
8H 4H	3.51	3.58	3.73	3.79	4.04	3.86	3.93	4.08	4.13	4.39
6H	3.42	3.49	3.68	3.73	4.00	3.76	3.83	4.02	4.07	4.35
8H	3.40	3.47	3.67	3.72	4.00	3.75	3.81	4.01	4.06	4.34
12H	3.38	3.45	3.66	3.71	3.99	3.73	3.79	4.00	4.05	4.33
12H 4H	3.43	3.50	3.68	3.74	4.01	3.78	3.85	4.03	4.08	4.35
6H	3.40	3.47	3.67	3.72	4.00	3.75	3.81	4.01	4.06	4.34

C Range: 0 - 360 Deg
 C Interval: 45.0 Deg
 Test Speed: High
 Temperature: 25
 Operators: QC01
 Test Date: 2024/7/22 14:38:59

G Range: 0 - 90 Deg
 G Interval: 1.0 Deg
 Test System: Huipu CPM-1600B Goniophotometer
 Humidity: 60
 Test Distance: 6.7 m
 Remarks:

Report No.:

Test Time: 2024/7/22 14:38:59

ZONAL LUMINOUS FLUX TABLE

Gamma [deg]	I _{mean} [cd]	Zonal Flux [lm]	Sum Flux [lm]	Zonal Flux [%]	Sum Flux [%]
0	9325.12	0.00	0.00	0.00	0.00
5	8081.63	199.83	199.83	13.93	13.93
10	4094.36	366.42	566.25	25.55	39.48
15	1675.72	259.28	825.53	18.08	57.56
20	922.35	178.36	1003.89	12.44	69.99
25	681.33	154.24	1158.13	10.75	80.75
30	475.59	137.70	1295.83	9.60	90.35
35	152.19	70.69	1366.52	4.93	95.27
40	48.82	22.38	1388.91	1.56	96.84
45	30.49	12.65	1401.56	0.88	97.72
50	24.68	10.61	1412.17	0.74	98.46
55	20.40	9.50	1421.67	0.66	99.12
60	14.21	7.49	1429.16	0.52	99.64
65	5.76	4.12	1433.28	0.29	99.93
70	0.95	0.96	1434.24	0.07	100.00
75	0.00	0.05	1434.29	0.00	100.00
80	0.00	0.00	1434.29	0.00	100.00
85	0.00	0.00	1434.29	0.00	100.00
90	0.00	0.00	1434.29	0.00	100.00

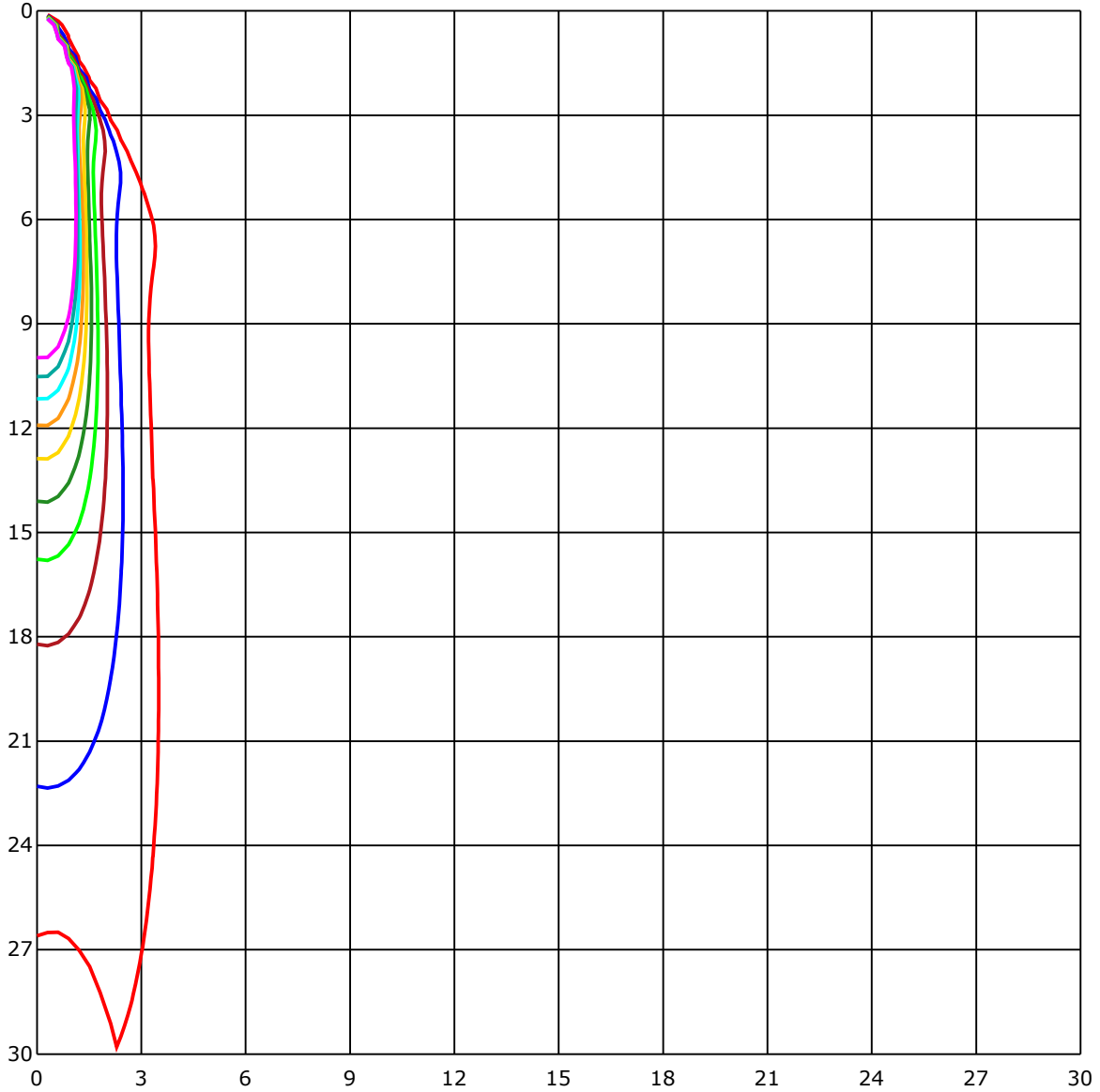
C Range: 0 - 360 Deg
C Interval: 45.0 Deg
Test Speed: High
Temperature: 25
Operators: QC01
Test Date: 2024/7/22 14:38:59

G Range: 0 - 90 Deg
G Interval: 1.0 Deg
Test System: HuiPu CPM-1600B Goniophotometer
Humidity: 60
Test Distance: 6.7 m
Remarks:

Report No.:

Test Time: 2024/7/22 14:38:59

SPACE ISOLX DIAGRAM



Unit of illumination:lx

- | | |
|----------|----------|
| — 94.403 | — 47.202 |
| — 84.963 | — 37.761 |
| — 75.523 | — 28.321 |
| — 66.082 | — 18.881 |
| — 56.642 | — 9.44 |

C Range: 0 - 360 Deg
 C Interval: 45.0 Deg
 Test Speed: High
 Temperature: 25
 Operators: QC01
 Test Date: 2024/7/22 14:38:59

G Range: 0 - 90 Deg
 G Interval: 1.0 Deg
 Test System: Huipu CPM-1600B Goniophotometer
 Humidity: 60
 Test Distance: 6.7 m
 Remarks:

Report No.:

Test Time: 2024/7/22 14:38:59

LUMINOUS DISTRIBUTION INTENSITY DATA

Gamma\C	C0	C45	C90	C135	C180	C225	C270	C315	C360	
G0	9389.55	9324.33	9461.33	9125.28	9389.55	9324.33	9461.33	9125.28	9389.55	
G1	9446.92	9018.13	9312.74	8689.54	9193.02	9457.07	9476.23	9394.31	9446.92	
G2	9349.55	8584.0	8960.13	8105.79	8833.23	9430.09	9369.85	9495.27	9349.55	
G3	9102.12	7963.85	8468.27	7391.14	8331.4	9249.49	9090.67	9484.22	9102.12	
G4	8682.58	7193.89	7791.92	6507.34	7653.03	8900.56	8631.31	9292.41	8682.58	
G5	8107.99	6278.14	6988.57	5597.78	6838.95	8411.13	7989.03	8928.71	8107.99	
G6	7352.26	5341.87	6054.45	4719.51	5929.88	7718.7	7192.99	8413.15	7352.26	
G7	6475.92	4415.92	5081.91	3917.24	5046.98	6867.95	6281.19	7735.67	6475.92	
G8	5561.69	3621.41	4210.59	3241.69	4217.37	5926.38	5359.55	6901.25	5561.69	
G9	4677.18	2973.11	3455.72	2704.8	3518.12	4997.78	4442.81	5985.36	4677.18	
G10	3861.98	2446.86	2845.85	2257.52	2933.61	4159.55	3631.92	5064.94	3861.98	
G11	3186.25	2042.41	2359.06	1902.35	2456.11	3417.75	2972.26	4194.39	3186.25	
G12	2625.3	1720.01	1980.01	1637.72	2078.05	2829.19	2458.81	3443.38	2625.3	
G13	2183.36	1469.34	1680.46	1414.62	1773.87	2351.02	2044.25	2834.67	2183.36	
G14	1837.3	1283.9	1457.94	1243.41	1530.97	1980.73	1723.33	2348.15	1837.3	
G15	1570.88	1135.0	1270.39	1108.96	1345.94	1692.89	1477.29	1968.56	1570.88	
G16	1360.26	1016.53	1132.17	997.28	1197.08	1473.07	1295.57	1660.89	1360.26	
G17	1195.33	921.5	1022.64	913.87	1080.77	1293.06	1143.12	1432.93	1195.33	
G18	1060.17	850.35	930.3	842.85	983.09	1151.47	1024.52	1252.21	1060.17	
G19	959.16	790.6	856.32	791.37	904.49	1031.39	930.48	1114.98	959.16	
G20	879.13	746.25	803.53	745.76	839.44	941.12	856.37	1000.91	879.13	
G21	818.97	710.2	758.28	709.89	789.21	869.56	795.41	919.12	818.97	
G22	768.52	679.19	724.26	673.84	746.39	815.65	749.53	850.08	768.52	
G23	728.34	652.52	695.88	645.43	714.11	767.66	712.72	789.35	728.34	
G24	692.29	629.13	669.53	616.07	682.1	730.05	683.32	748.14	692.29	
G25	663.97	600.85	642.02	582.27	653.6	699.57	653.28	711.82	663.97	
G26	631.65	566.96	614.77	537.29	618.0	671.73	622.58	686.73	631.65	
G27	599.24	519.87	578.0	480.46	581.06	640.89	590.08	655.8	599.24	
G28	557.04	462.77	529.57	407.47	523.46	608.44	551.97	620.47	557.04	
G29	506.09	387.89	466.59	338.07	461.15	564.67	496.3	583.97	506.09	
G30	435.48	314.86	388.57	267.54	383.63	505.15	425.51	532.98	435.48	
G31	361.36	242.23	309.7	201.51	311.94	431.93	347.49	473.28	361.36	
G32	291.2	180.19	239.35	147.37	243.3	357.19	277.33	394.67	291.2	
G33	224.41	127.13	175.79	105.09	183.47	282.27	208.87	320.56	224.41	
G34	165.06	90.54	128.16	78.15	136.33	216.91	151.55	250.85	165.06	
G35	118.42	67.34	95.17	61.99	103.79	158.37	107.02	189.26	118.42	
G36	86.5	53.55	76.9	50.68	82.19	119.09	79.9	140.24	86.5	

C Range: 0 - 360 Deg

C Interval: 45.0 Deg

Test Speed: High

Temperature: 25

Operators: QC01

Test Date: 2024/7/22 14:38:59

G Range: 0 - 90 Deg

G Interval: 1.0 Deg

Test System: Huipu CPM-1600B Goniophotometer

Humidity: 60

Test Distance: 6.7 m

Remarks:

Report No.:

Test Time: 2024/7/22 14:38:59

LUMINOUS DISTRIBUTION INTENSITY DATA(Continue 1)

Gamma\C	C0	C45	C90	C135	C180	C225	C270	C315	C360	
G37	67.25	44.71	63.38	43.99	70.48	91.71	63.61	104.82	67.25	
G38	53.91	39.55	54.81	37.53	57.68	75.73	52.97	82.73	53.91	
G39	45.16	33.94	47.58	35.15	49.96	64.06	45.16	69.58	45.16	
G40	37.98	31.69	45.29	30.84	45.02	55.12	39.77	58.49	37.98	
G41	35.24	28.82	39.68	29.13	41.3	48.35	34.61	50.68	35.24	
G42	29.63	27.7	36.18	27.07	37.66	44.04	30.93	44.89	29.63	
G43	27.38	25.68	32.99	25.63	34.39	39.46	27.02	41.12	27.38	
G44	25.72	25.77	31.65	26.71	32.05	37.62	25.36	39.05	25.72	
G45	24.6	24.24	30.17	24.2	32.23	34.57	23.7	36.99	24.6	
G46	23.88	23.75	28.68	23.43	29.58	34.25	23.66	36.0	23.88	
G47	21.86	22.76	28.59	23.39	29.27	31.2	21.46	33.26	21.86	
G48	21.68	23.48	28.01	23.25	27.7	30.3	20.96	31.74	21.68	
G49	20.51	22.8	25.45	22.62	26.98	29.4	19.48	30.21	20.51	
G50	19.62	21.82	25.68	20.56	25.77	29.31	19.8	29.9	19.62	
G51	18.94	21.77	23.75	21.1	24.51	27.65	19.17	28.77	18.94	
G52	18.72	20.87	23.39	19.48	22.98	27.47	17.69	27.79	18.72	
G53	18.45	19.17	22.18	19.08	22.67	25.86	17.73	28.28	18.45	
G54	16.52	18.72	21.01	17.42	20.16	26.31	17.55	25.54	16.52	
G55	16.07	17.87	19.66	17.37	20.02	24.24	15.04	25.99	16.07	
G56	15.22	16.47	18.18	16.79	17.87	24.51	13.92	24.64	15.22	
G57	13.74	14.95	17.87	14.05	17.06	22.13	13.15	23.48	13.74	
G58	12.03	14.14	15.17	12.17	14.68	20.83	12.3	21.95	12.03	
G59	10.68	12.12	13.69	11.81	13.33	20.02	10.64	21.37	10.68	
G60	9.25	11.54	11.76	9.56	11.72	18.54	9.52	18.85	9.25	
G61	8.08	8.84	10.06	8.26	11.22	16.61	7.77	18.23	8.08	
G62	5.93	7.54	9.29	6.11	8.3	15.4	6.37	16.3	5.93	
G63	5.21	6.06	6.37	4.89	6.42	14.68	4.53	14.86	5.21	
G64	2.29	3.68	4.08	3.64	3.86	11.94	3.01	13.6	2.29	
G65	0.27	2.24	3.12	1.53	2.42	11.81	0.22	11.85	0.27	
G66	0.0	0.63	2.15	0.0	0.58	9.25	0.0	9.2	0.0	
G67	0.0	0.0	0.0	0.0	0.22	7.41	0.0	7.86	0.0	
G68	0.0	0.0	0.0	0.0	0.0	5.93	0.0	5.7	0.0	
G69	0.0	0.0	0.0	0.0	0.0	2.83	0.0	4.74	0.0	
G70	0.0	0.0	0.0	0.0	0.0	2.11	0.0	3.77	0.0	
G71	0.0	0.0	0.0	0.0	0.0	0.0	0.0	0.94	0.0	
G72	0.0	0.0	0.0	0.0	0.0	0.0	0.0	0.0	0.0	
G73	0.0	0.0	0.0	0.0	0.0	0.0	0.0	0.0	0.0	

C Range: 0 - 360 Deg

C Interval: 45.0 Deg

Test Speed: High

Temperature: 25

Operators: QC01

Test Date: 2024/7/22 14:38:59

G Range: 0 - 90 Deg

G Interval: 1.0 Deg

Test System: Huipu CPM-1600B Goniophotometer

Humidity: 60

Test Distance: 6.7 m

Remarks:

Report No.:

Test Time: 2024/7/22 14:38:59

LUMINOUS DISTRIBUTION INTENSITY DATA(Continue 2)

Gamma\C	C0	C45	C90	C135	C180	C225	C270	C315	C360	
G74	0.0	0.0	0.0	0.0	0.0	0.0	0.0	0.0	0.0	
G75	0.0	0.0	0.0	0.0	0.0	0.0	0.0	0.0	0.0	
G76	0.0	0.0	0.0	0.0	0.0	0.0	0.0	0.0	0.0	
G77	0.0	0.0	0.0	0.0	0.0	0.0	0.0	0.0	0.0	
G78	0.0	0.0	0.0	0.0	0.0	0.0	0.0	0.0	0.0	
G79	0.0	0.0	0.0	0.0	0.0	0.0	0.0	0.0	0.0	
G80	0.0	0.0	0.0	0.0	0.0	0.0	0.0	0.0	0.0	
G81	0.0	0.0	0.0	0.0	0.0	0.0	0.0	0.0	0.0	
G82	0.0	0.0	0.0	0.0	0.0	0.0	0.0	0.0	0.0	
G83	0.0	0.0	0.0	0.0	0.0	0.0	0.0	0.0	0.0	
G84	0.0	0.0	0.0	0.0	0.0	0.0	0.0	0.0	0.0	
G85	0.0	0.0	0.0	0.0	0.0	0.0	0.0	0.0	0.0	
G86	0.0	0.0	0.0	0.0	0.0	0.0	0.0	0.0	0.0	
G87	0.0	0.0	0.0	0.0	0.0	0.0	0.0	0.0	0.0	
G88	0.0	0.0	0.0	0.0	0.0	0.0	0.0	0.0	0.0	
G89	0.0	0.0	0.0	0.0	0.0	0.0	0.0	0.0	0.0	
G90	0.0	0.0	0.0	0.0	0.0	0.0	0.0	0.0	0.0	

C Range: 0 - 360 Deg
 C Interval: 45.0 Deg
 Test Speed: High
 Temperature: 25
 Operators: QC01
 Test Date: 2024/7/22 14:38:59

G Range: 0 - 90 Deg
 G Interval: 1.0 Deg
 Test System: Huipu CPM-1600B Goniophotometer
 Humidity: 60
 Test Distance: 6.7 m
 Remarks: