

Report No.:

Test Time: 2024/12/24 9:08:23

## LUMINAIRE PHOTOMETRIC TEST REPORT

### Luminaire Property

Manufacturer: InBright  
 Luminaire Type: IBSP101CT075H122-45°-25W  
 Lamp Type:  
 Luminous Width: 68 mm  
 Luminous Length: 68 mm  
 Luminous Height: 75 mm

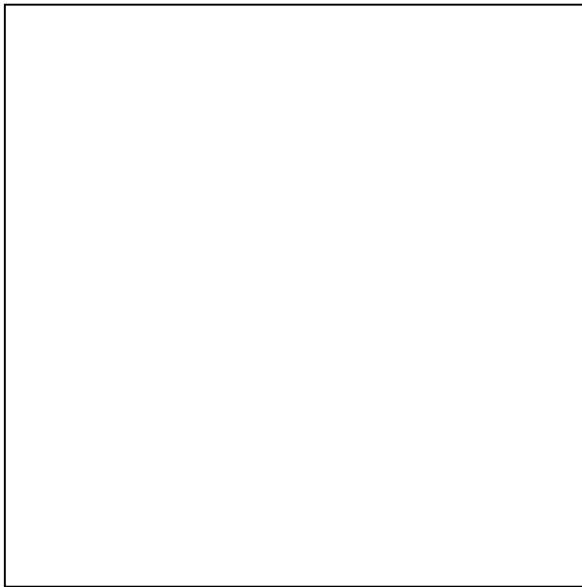
Voltage(V): 219.90 V  
 Current(A): 0.1110 A  
 Power(W): 23.63 W  
 Power Factor: 0.9600  
 Lamp Luminous Flux: 1894.77

### Photometric Results

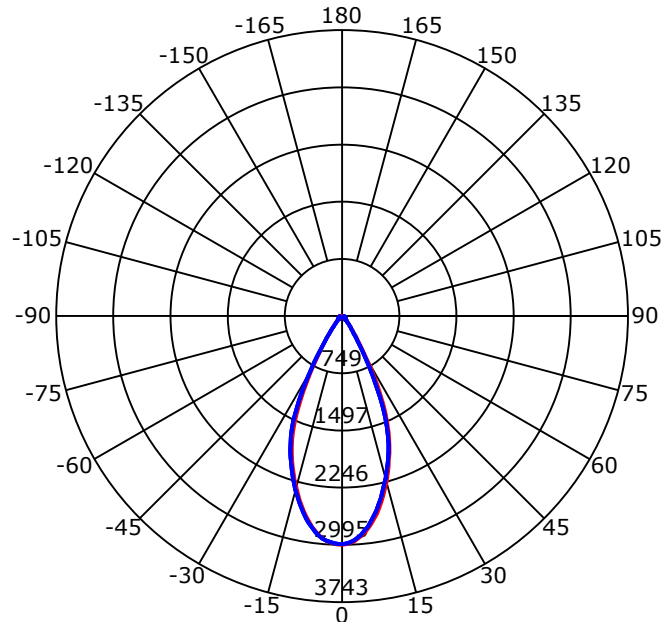
CIE Class: Direct  
 Luminaire Luminous Flux: 1894.766 lm  
 Downward Ratio: 100.00%  
 Luminaire Efficacy Rating(LER): 80.18 lm/W  
 Beam Angle(50%) C0-180,C90-270: 47.4,47.7  
 Field Angle(10%) C0-180,C90-270: 70.4,69.4  
 S/MH C0-180,C90-270: 0.768,0.768

Max. Intensity: 2994.74 cd  
 Max.Intensity Angle: C=180 Gamma=0  
 Upward Ratio: 0.00%  
 Efficacy: 100.00%  
 Center Intensity: 2994.74 cd  
 Effective Luminous Flux: 1638.83 lm  
 ERP( $\phi$ use)(120deg): 1827.31 lm

Picture of Luminaire



Luminous Intensity Distribution Curve



Beam Angle(50%) C0-180,C90-270: 47.4 deg,47.7 deg

C0-180 — C90-270 —

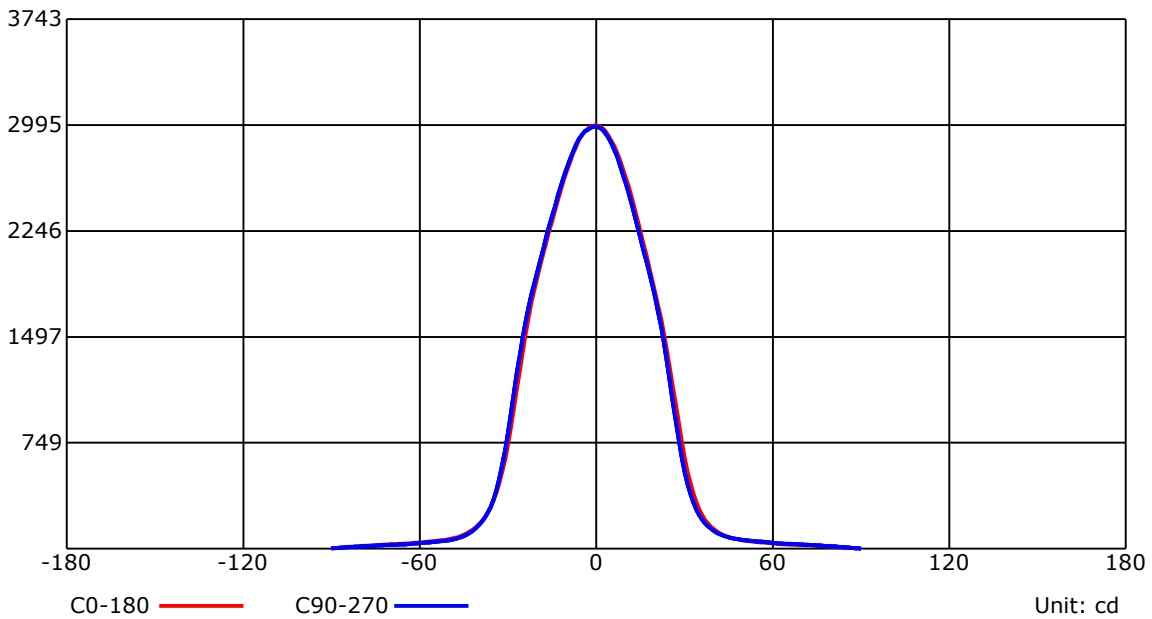
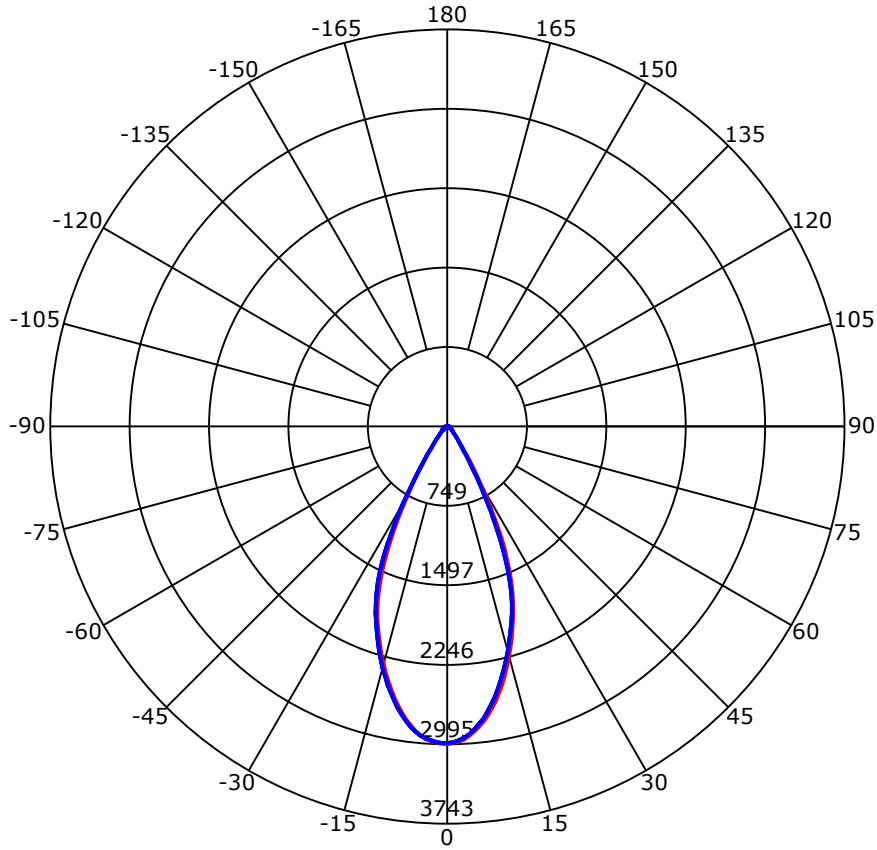
C Range: 0 - 360 Deg  
 C Interval: 45.0 Deg  
 Test Speed: High  
 Temperature: 25  
 Operators: QC01  
 Test Date: 2024/12/24 9:08:23

G Range: 0 - 90 Deg  
 G Interval: 1.0 Deg  
 Test System: Huipu CPM-1600B Goniophotometer  
 Humidity: 60  
 Test Distance: 6.81 m  
 Remarks:

Report No.:

Test Time: 2024/12/24 9:08:23

## Luminous Intensity Distribution Curve



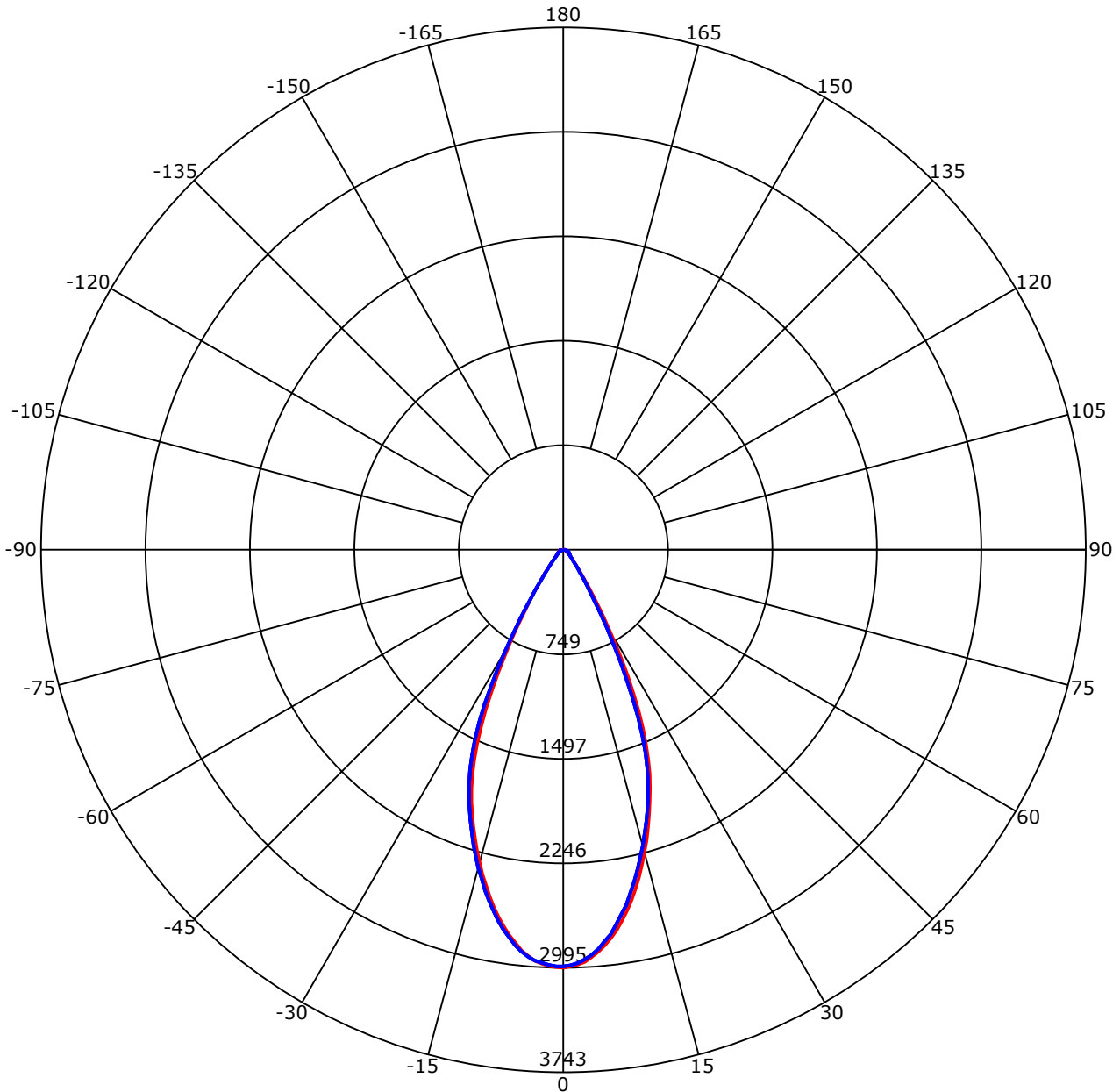
C Range: 0 - 360 Deg  
 C Interval: 45.0 Deg  
 Test Speed: High  
 Temperature: 25  
 Operators: QC01  
 Test Date: 2024/12/24 9:08:23

G Range: 0 - 90 Deg  
 G Interval: 1.0 Deg  
 Test System: Huipu CPM-1600B Goniophotometer  
 Humidity: 60  
 Test Distance: 6.81 m  
 Remarks:

Report No.:

Test Time: 2024/12/24 9:08:23

## Luminous Intensity Distribution Curve



C0-180 — C90-270 —  
 Unit: cd/klm

C Range: 0 - 360 Deg  
 C Interval: 45.0 Deg  
 Test Speed: High  
 Temperature: 25  
 Operators: QC01  
 Test Date: 2024/12/24 9:08:23

G Range: 0 - 90 Deg  
 G Interval: 1.0 Deg  
 Test System: Huipu CPM-1600B Goniophotometer  
 Humidity: 60  
 Test Distance: 6.81 m  
 Remarks:

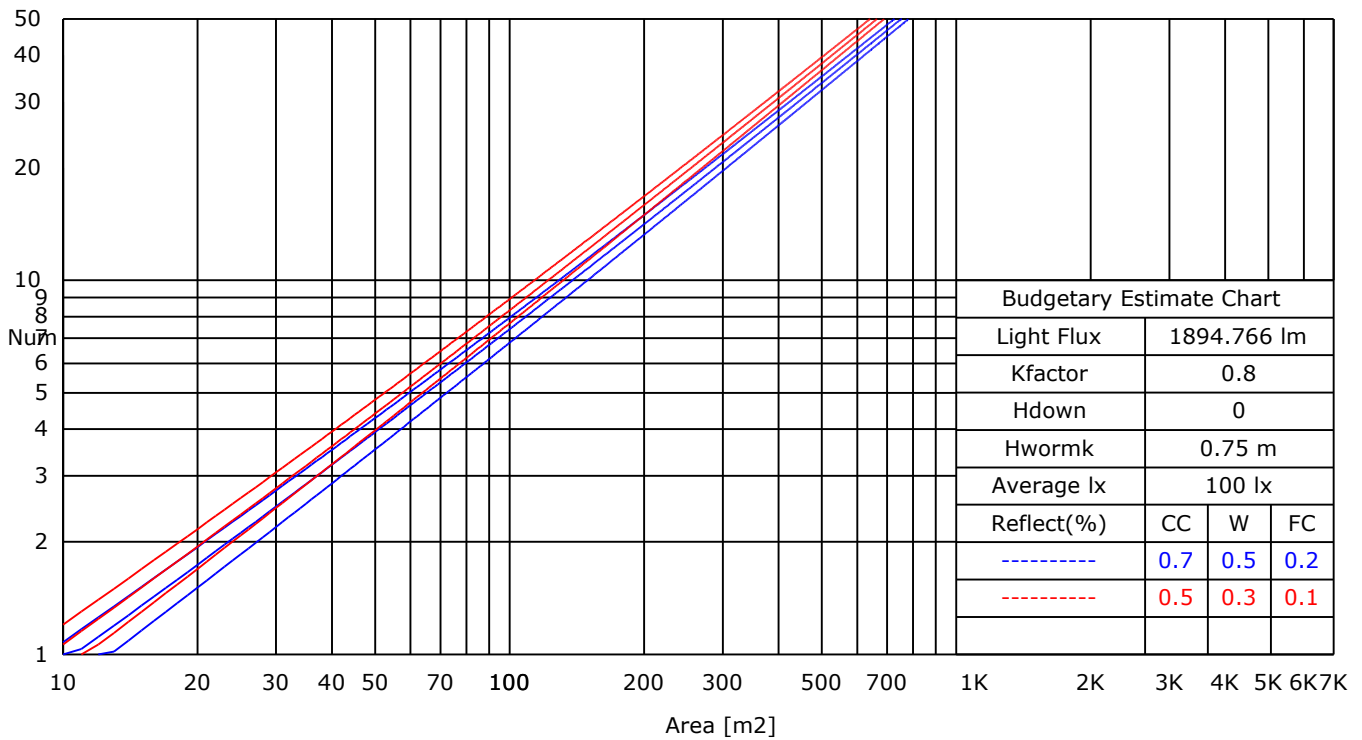
Report No.:

Test Time: 2024/12/24 9:08:23

## UTILIZATION FACTORS TABLE

RHOCC	80			70			50			30			10			0
RHOW	50	30	10	50	30	10	50	30	10	50	30	10	50	30	10	0
RCR	COEFFICIENTS OF UTILIZATION FOR RHOFC=20															
0	1.19	1.19	1.19	1.16	1.16	1.16	1.11	1.11	1.11	1.06	1.06	1.06	1.02	1.02	1.02	1.00
1	1.03	1.01	0.99	1.02	0.99	0.98	0.98	0.96	0.94	0.93	0.91	0.89	0.87	0.85	0.82	0.77
2	0.98	0.96	0.95	0.97	0.95	0.93	0.94	0.91	0.89	0.90	0.87	0.84	0.85	0.81	0.79	0.74
3	0.94	0.92	0.91	0.93	0.90	0.89	0.90	0.87	0.85	0.86	0.83	0.80	0.82	0.78	0.75	0.71
4	0.90	0.88	0.87	0.89	0.87	0.85	0.87	0.84	0.81	0.83	0.80	0.77	0.80	0.76	0.72	0.68
5	0.87	0.85	0.84	0.86	0.84	0.82	0.84	0.81	0.78	0.81	0.77	0.74	0.77	0.73	0.70	0.66
6	0.84	0.82	0.81	0.83	0.81	0.80	0.81	0.78	0.76	0.78	0.75	0.72	0.75	0.71	0.68	0.64
7	0.81	0.80	0.79	0.80	0.78	0.77	0.78	0.75	0.73	0.76	0.72	0.70	0.73	0.69	0.66	0.62
8	0.79	0.78	0.77	0.78	0.76	0.75	0.76	0.73	0.71	0.74	0.70	0.68	0.71	0.67	0.64	0.60
9	0.77	0.75	0.75	0.76	0.74	0.73	0.74	0.71	0.69	0.72	0.68	0.66	0.69	0.65	0.62	0.59
10	0.75	0.74	0.73	0.74	0.72	0.71	0.72	0.69	0.68	0.70	0.66	0.64	0.68	0.63	0.60	0.57

## LUMINAIRE BUDGETARY ESTIMATE DIAGRAM



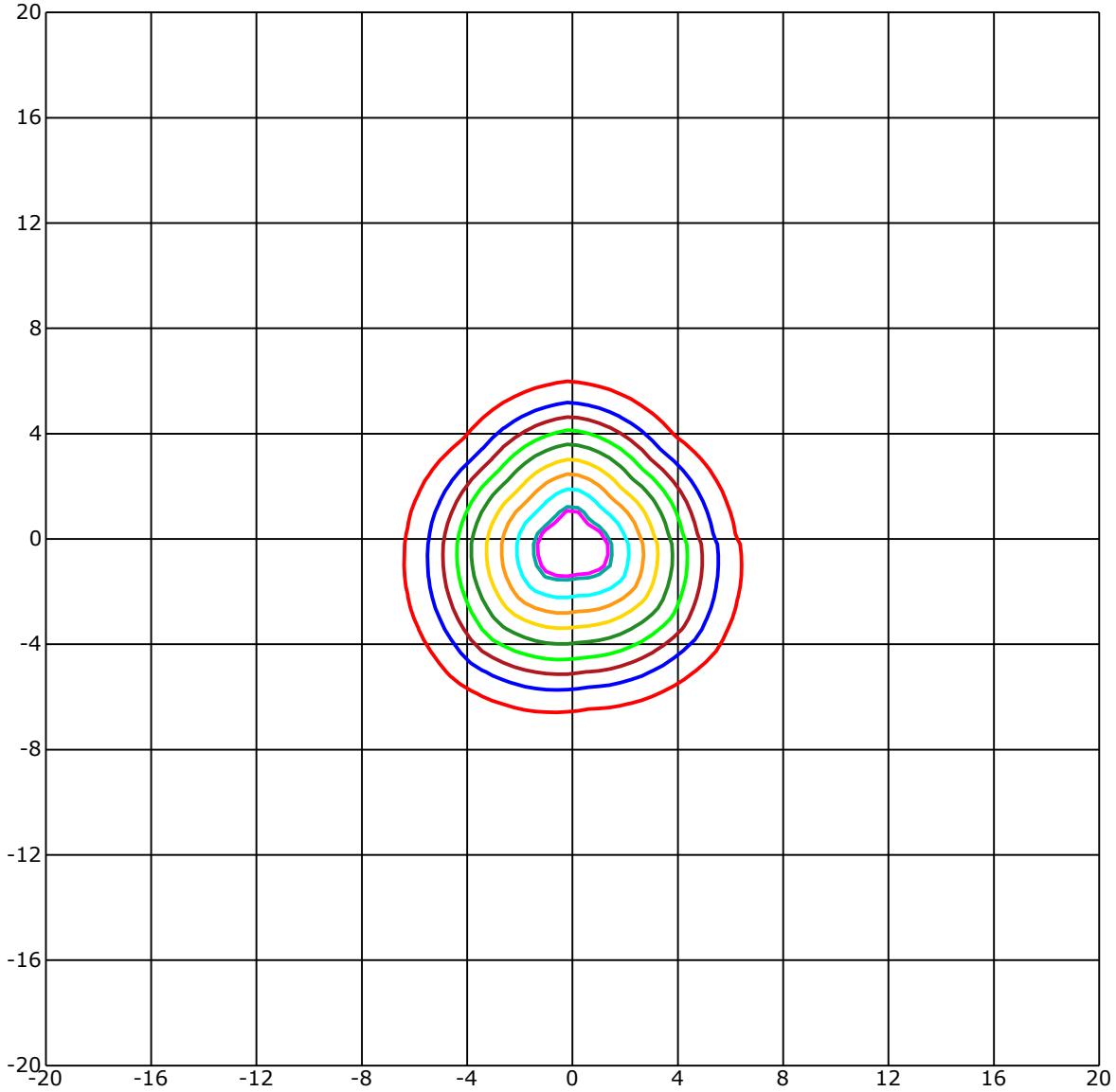
C Range: 0 - 360 Deg  
 C Interval: 45.0 Deg  
 Test Speed: High  
 Temperature: 25  
 Operators: QC01  
 Test Date: 2024/12/24 9:08:23

G Range: 0 - 90 Deg  
 G Interval: 1.0 Deg  
 Test System: Huipu CPM-1600B Goniophotometer  
 Humidity: 60  
 Test Distance: 6.81 m  
 Remarks:

Report No.:

Test Time: 2024/12/24 9:08:23

## ISOLX DIAGRAM



Unit of illumination:lx    Height of plane:10.0(m)/32.81(ft)

— 27.552(92%Emax)	— 14.974(50%Emax)
— 26.953(90%Emax)	— 11.979(40%Emax)
— 23.958(80%Emax)	— 8.984(30%Emax)
— 20.963(70%Emax)	— 5.989(20%Emax)
— 17.968(60%Emax)	— 2.995(10%Emax)

C Range: 0 - 360 Deg  
 C Interval: 45.0 Deg  
 Test Speed: High  
 Temperature: 25  
 Operators: QC01  
 Test Date: 2024/12/24 9:08:23

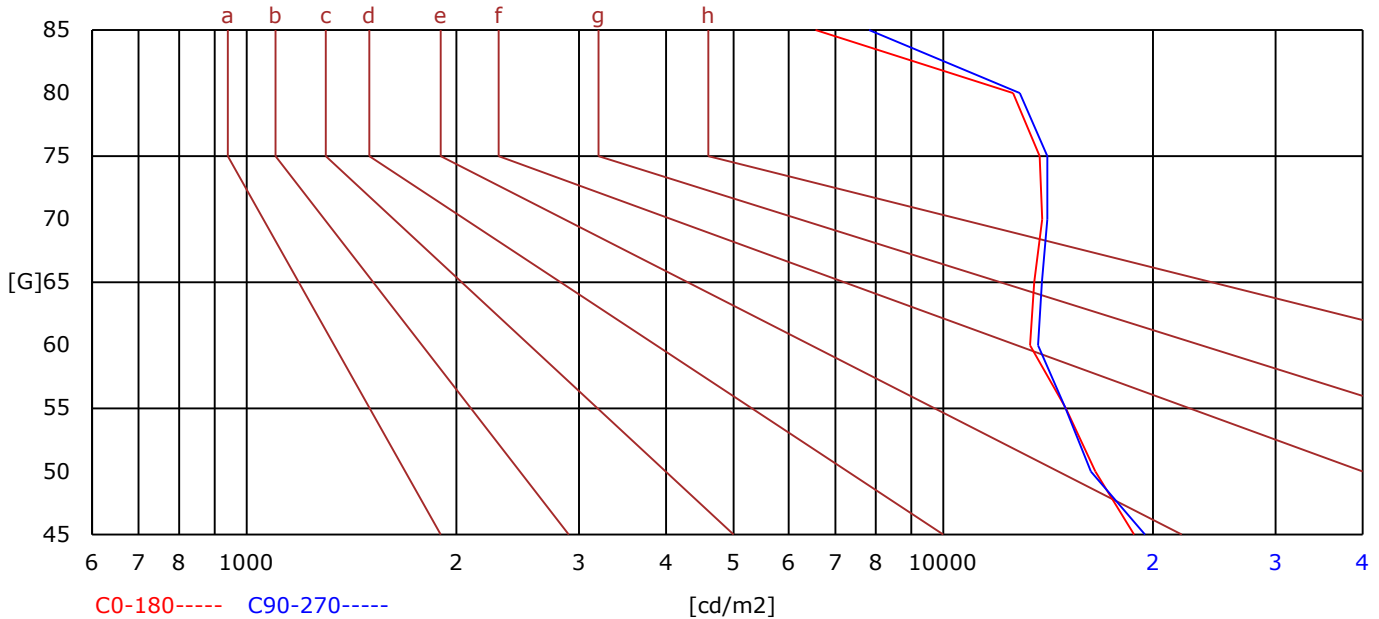
G Range: 0 - 90 Deg  
 G Interval: 1.0 Deg  
 Test System: Huipu CPM-1600B Goniophotometer  
 Humidity: 60  
 Test Distance: 6.81 m  
 Remarks:

Report No.:

Test Time: 2024/12/24 9:08:23

## BRIGHT LIMIT DIAGRAM

C/G	45	50	55	60	65	70	75	80	85
C0	18779	16539	15003	13319	13503	13870	13757	12591	6559
C90	19474	16290	14985	13680	13859	14105	14105	12880	7825
Dazzle	Quality	Illuminance	---	---	---	---	---	---	---
1.15	A	2000	1000	500	<=300				
1.5	B		2000	1000	500	<=300			
1.85	C			2000	1000	500	<=300		
2.2	D				2000	1000	500	<=300	
2.55	E					2000	1000	500	<=300
---	---	a	b	c	d	e	f	g	h



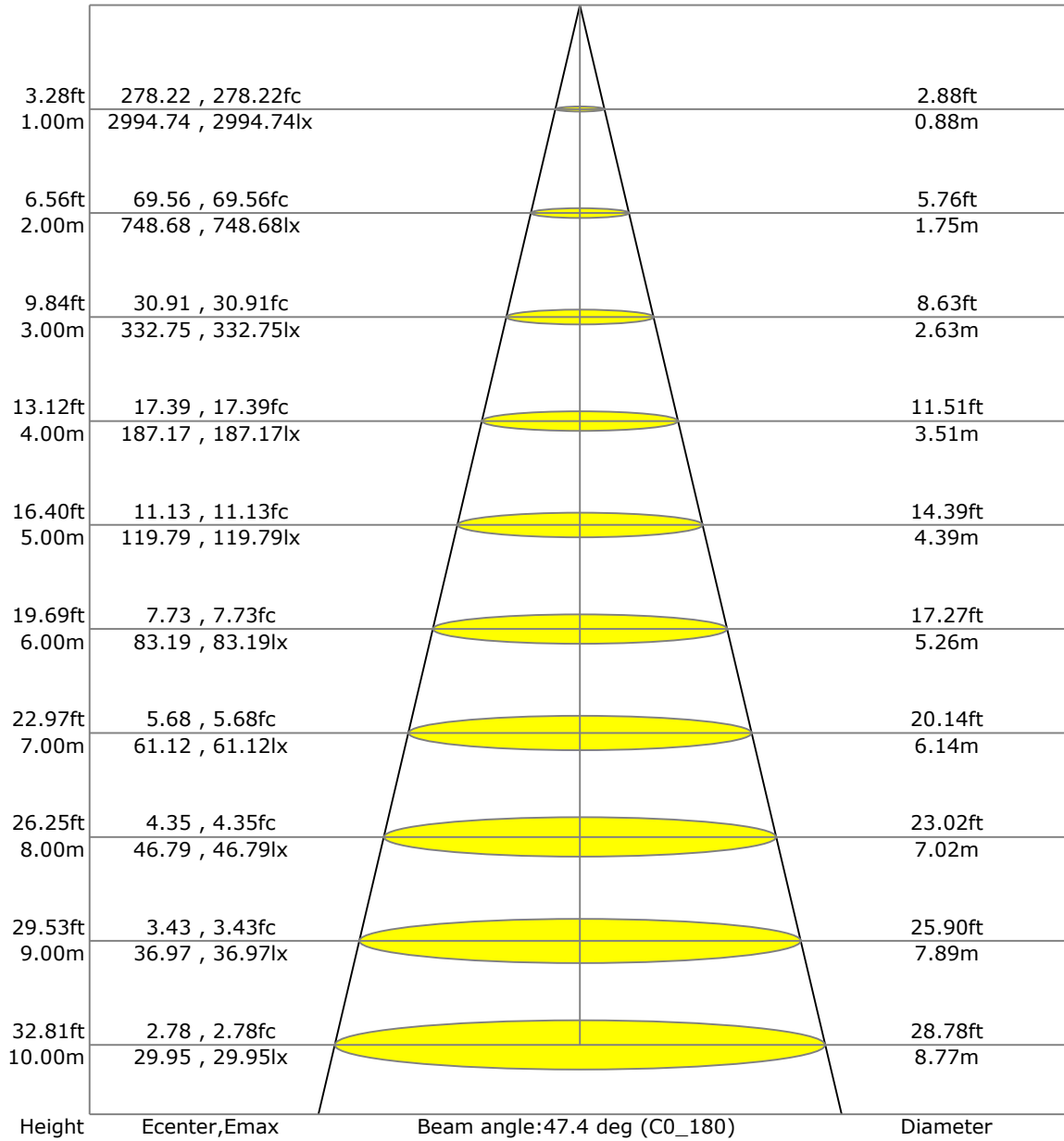
C Range: 0 - 360 Deg  
 C Interval: 45.0 Deg  
 Test Speed: High  
 Temperature: 25  
 Operators: QC01  
 Test Date: 2024/12/24 9:08:23

G Range: 0 - 90 Deg  
 G Interval: 1.0 Deg  
 Test System: Huipu CPM-1600B Goniophotometer  
 Humidity: 60  
 Test Distance: 6.81 m  
 Remarks:

Report No.:

Test Time: 2024/12/24 9:08:23

## LX-DISTANCE DIAGRAM



C Range: 0 - 360 Deg  
 C Interval: 45.0 Deg  
 Test Speed: High  
 Temperature: 25  
 Operators: QC01  
 Test Date: 2024/12/24 9:08:23

G Range: 0 - 90 Deg  
 G Interval: 1.0 Deg  
 Test System: Huipu CPM-1600B Goniophotometer  
 Humidity: 60  
 Test Distance: 6.81 m  
 Remarks:

Report No.:

Test Time: 2024/12/24 9:08:23

## UGR(Unified Glare Rating) TABLE

RHOCC	70	70	50	50	30	70	70	50	50	30
RHOW	50	30	50	30	30	50	30	50	30	30
RHOF	20	20	20	20	20	20	20	20	20	20
Room Size X	Viewed Endwise					Viewed Crosswise				
2H 2H	10.43	10.48	10.63	10.67	10.91	10.55	10.60	10.75	10.79	11.03
3H	10.57	10.62	10.77	10.81	11.06	10.66	10.72	10.87	10.91	11.16
4H	10.59	10.65	10.81	10.84	11.09	10.69	10.74	10.90	10.94	11.18
6H	10.59	10.65	10.81	10.85	11.10	10.68	10.73	10.90	10.93	11.19
8H	10.58	10.64	10.80	10.84	11.09	10.67	10.73	10.89	10.93	11.18
12H	10.57	10.63	10.80	10.83	11.09	10.66	10.72	10.88	10.92	11.18
4H 2H	12.33	12.38	12.54	12.58	12.83	12.68	12.73	12.89	12.93	13.17
3H	12.64	12.70	12.87	12.90	13.16	12.96	13.02	13.19	13.22	13.48
4H	12.73	12.78	12.96	12.99	13.25	13.04	13.09	13.26	13.30	13.56
6H	12.77	12.82	13.00	13.04	13.30	13.06	13.11	13.30	13.33	13.59
8H	12.77	12.82	13.01	13.04	13.31	13.06	13.11	13.30	13.33	13.60
12H	12.76	12.80	13.01	13.04	13.31	13.05	13.09	13.29	13.33	13.60
8H 4H	13.05	13.10	13.27	13.30	13.56	13.49	13.54	13.71	13.74	14.00
6H	13.74	13.79	14.00	14.03	14.30	14.14	14.18	14.39	14.42	14.69
8H	13.75	13.80	14.01	14.04	14.32	14.14	14.19	14.40	14.43	14.71
12H	13.75	13.79	14.02	14.05	14.33	14.14	14.18	14.41	14.43	14.71
12H 4H	13.88	13.93	14.13	14.16	14.43	14.33	14.38	14.58	14.61	14.88
6H	13.99	14.04	14.25	14.28	14.56	14.43	14.47	14.69	14.72	15.00

C Range: 0 - 360 Deg  
 C Interval: 45.0 Deg  
 Test Speed: High  
 Temperature: 25  
 Operators: QC01  
 Test Date: 2024/12/24 9:08:23

G Range: 0 - 90 Deg  
 G Interval: 1.0 Deg  
 Test System: Huipu CPM-1600B Goniophotometer  
 Humidity: 60  
 Test Distance: 6.81 m  
 Remarks:



Report No.:

Test Time: 2024/12/24 9:08:23

### ZONAL LUMINOUS FLUX TABLE

Gamma [deg]	Imean [cd]	Zonal Flux [lm]	Sum Flux [lm]	Zonal Flux [%]	Sum Flux [%]
0	2973.61	0.00	0.00	0.00	0.00
5	2914.26	69.97	69.97	3.69	3.69
10	2690.20	197.03	267.00	10.40	14.09
15	2347.34	290.05	557.05	15.31	29.40
20	1943.32	339.22	896.27	17.90	47.30
25	1441.97	334.01	1230.28	17.63	64.93
30	832.66	255.20	1485.48	13.47	78.40
35	379.92	145.71	1631.19	7.69	86.09
40	179.86	75.62	1706.82	3.99	90.08
45	100.79	44.42	1751.23	2.34	92.42
50	67.38	30.49	1781.73	1.61	94.03
55	52.64	24.53	1806.26	1.29	95.33
60	42.73	21.05	1827.31	1.11	96.44
65	34.53	17.86	1845.17	0.94	97.38
70	29.16	15.51	1860.68	0.82	98.20
75	23.98	13.36	1874.04	0.70	98.91
80	17.92	10.60	1884.63	0.56	99.47
85	10.97	7.12	1891.75	0.38	99.84
90	3.28	3.02	1894.77	0.16	100.00

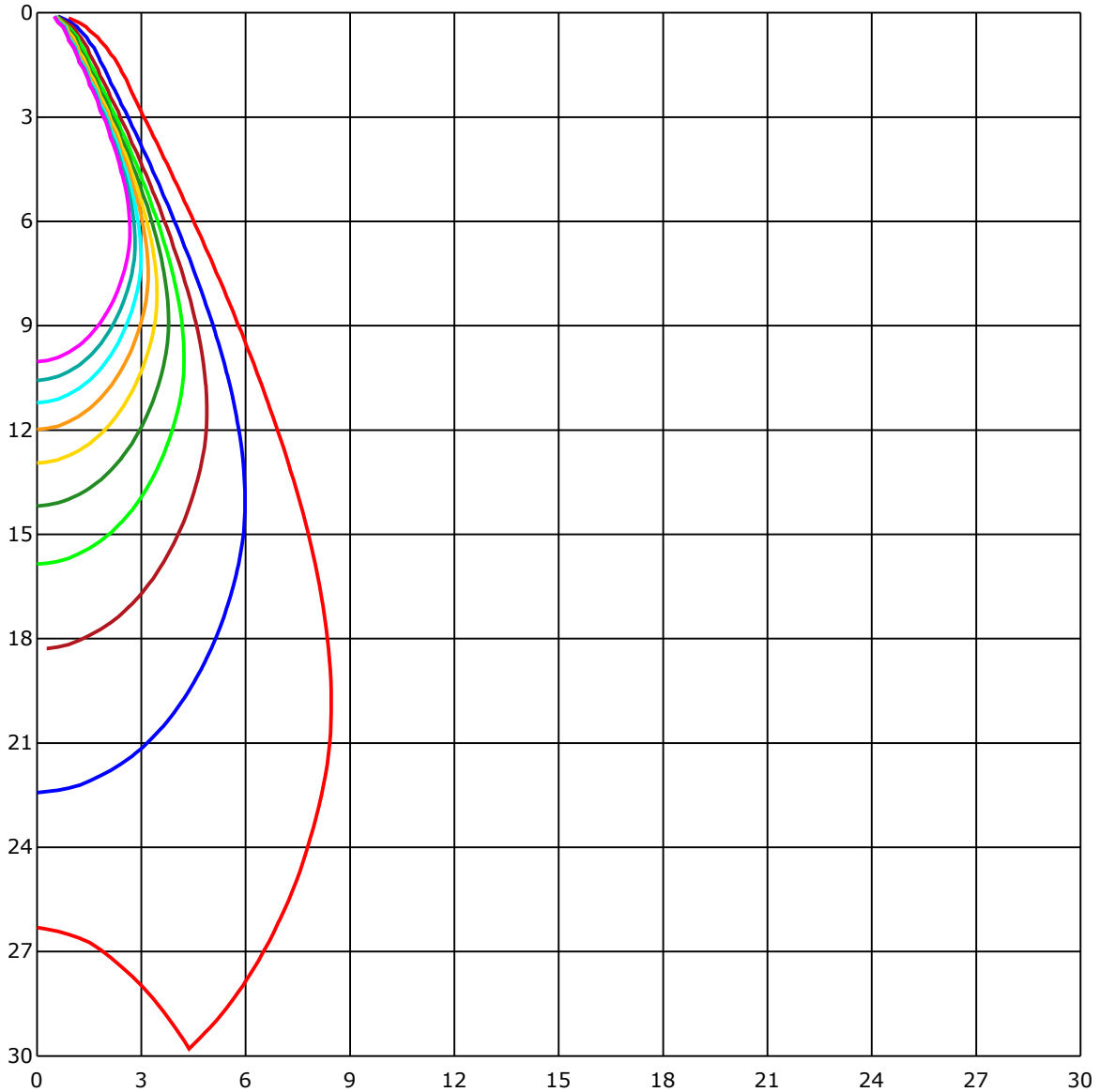
C Range: 0 - 360 Deg  
 C Interval: 45.0 Deg  
 Test Speed: High  
 Temperature: 25  
 Operators: QC01  
 Test Date: 2024/12/24 9:08:23

G Range: 0 - 90 Deg  
 G Interval: 1.0 Deg  
 Test System: Huipu CPM-1600B Goniophotometer  
 Humidity: 60  
 Test Distance: 6.81 m  
 Remarks:

Report No.:

Test Time: 2024/12/24 9:08:23

## SPACE ISOLX DIAGRAM



Unit of illumination:lx

- |          |          |
|----------|----------|
| — 29.774 | — 14.887 |
| — 26.797 | — 11.91  |
| — 23.82  | — 8.932  |
| — 20.842 | — 5.955  |
| — 17.865 | — 2.977  |

C Range: 0 - 360 Deg  
 C Interval: 45.0 Deg  
 Test Speed: High  
 Temperature: 25  
 Operators: QC01  
 Test Date: 2024/12/24 9:08:23

G Range: 0 - 90 Deg  
 G Interval: 1.0 Deg  
 Test System: Huipu CPM-1600B Goniophotometer  
 Humidity: 60  
 Test Distance: 6.81 m  
 Remarks:

Report No.:

Test Time: 2024/12/24 9:08:23

## LUMINOUS DISTRIBUTION INTENSITY DATA

Gamma\C	C0	C45	C90	C135	C180	C225	C270	C315	C360	
G0	2994.74	2950.31	2984.49	2964.92	2994.74	2950.31	2984.49	2964.92	2994.74	
G1	2985.23	2915.2	2977.35	2943.86	2991.21	2963.85	2984.4	2979.2	2985.23	
G2	2973.45	2881.63	2962.6	2909.36	2983.84	2976.0	2975.58	2982.73	2973.45	
G3	2956.11	2843.09	2938.85	2873.83	2968.86	2978.92	2961.81	2990.05	2956.11	
G4	2924.06	2795.51	2909.5	2822.22	2951.56	2981.89	2949.01	2980.31	2924.06	
G5	2888.3	2746.35	2871.66	2778.02	2919.42	2964.64	2924.57	2970.81	2888.3	
G6	2849.02	2686.48	2820.97	2710.03	2884.78	2955.78	2892.2	2946.65	2849.02	
G7	2802.23	2621.55	2775.8	2649.79	2834.79	2924.71	2852.22	2930.18	2802.23	
G8	2750.71	2549.43	2711.94	2582.22	2789.29	2897.39	2801.86	2894.89	2750.71	
G9	2688.42	2474.58	2647.15	2515.16	2730.76	2857.09	2753.44	2855.01	2688.42	
G10	2626.84	2395.93	2586.12	2435.63	2672.42	2825.51	2697.05	2809.09	2626.84	
G11	2558.57	2313.24	2509.41	2362.72	2607.68	2765.69	2631.98	2763.46	2558.57	
G12	2484.65	2232.36	2434.14	2283.47	2538.49	2715.14	2566.92	2706.79	2484.65	
G13	2407.2	2149.53	2353.82	2200.36	2466.75	2654.57	2503.2	2647.94	2407.2	
G14	2328.17	2063.41	2276.28	2117.77	2395.19	2594.23	2425.56	2578.09	2328.17	
G15	2245.25	1976.18	2196.74	2034.61	2318.11	2525.87	2359.52	2515.49	2245.25	
G16	2163.12	1889.59	2111.69	1947.47	2244.65	2458.07	2281.94	2436.74	2163.12	
G17	2078.16	1803.1	2030.35	1861.54	2164.56	2384.75	2207.27	2359.66	2078.16	
G18	1987.31	1714.2	1949.14	1768.74	2087.62	2312.96	2122.36	2277.76	1987.31	
G19	1902.02	1616.11	1865.76	1673.39	2007.2	2233.89	2045.46	2202.73	1902.02	
G20	1813.96	1510.56	1776.16	1562.88	1924.05	2160.71	1967.14	2113.17	1813.96	
G21	1723.71	1394.62	1676.4	1446.29	1838.12	2078.3	1887.28	2033.41	1723.71	
G22	1626.83	1274.88	1568.9	1321.58	1742.77	2004.56	1803.15	1952.9	1626.83	
G23	1517.15	1138.49	1449.62	1187.23	1635.08	1923.73	1710.58	1872.44	1517.15	
G24	1401.95	1000.47	1318.75	1048.1	1521.88	1844.89	1611.76	1787.98	1401.95	
G25	1278.54	864.36	1180.13	915.51	1393.79	1757.01	1501.61	1694.44	1278.54	
G26	1151.33	737.47	1036.6	784.92	1263.47	1661.8	1377.19	1588.2	1151.33	
G27	1021.67	620.23	897.89	668.09	1124.16	1546.6	1245.94	1474.44	1021.67	
G28	893.62	517.46	767.15	563.93	991.29	1426.62	1104.49	1354.09	893.62	
G29	766.5	429.16	648.29	475.03	860.55	1291.81	965.83	1224.1	766.5	
G30	650.7	359.04	544.18	401.15	740.86	1155.0	828.0	1089.65	650.7	
G31	549.19	301.21	456.9	340.82	633.03	1009.65	702.88	956.46	549.19	
G32	462.42	254.56	383.25	290.64	538.57	870.99	590.37	825.45	462.42	
G33	388.86	217.78	323.33	249.18	459.31	743.73	494.0	704.87	388.86	
G34	328.39	187.13	274.27	214.68	392.67	630.67	412.7	598.9	328.39	
G35	278.72	162.46	235.22	186.52	336.83	531.75	347.64	508.19	278.72	
G36	237.72	142.84	204.15	162.64	290.18	449.48	293.47	429.77	237.72	

C Range: 0 - 360 Deg  
 C Interval: 45.0 Deg  
 Test Speed: High  
 Temperature: 25  
 Operators: QC01  
 Test Date: 2024/12/24 9:08:23

G Range: 0 - 90 Deg  
 G Interval: 1.0 Deg  
 Test System: Huipu CPM-1600B Goniophotometer  
 Humidity: 60  
 Test Distance: 6.81 m  
 Remarks:

Report No.:

Test Time: 2024/12/24 9:08:23

### LUMINOUS DISTRIBUTION INTENSITY DATA(Continue 1)

Gamma\C	C0	C45	C90	C135	C180	C225	C270	C315	C360	
G37	204.38	126.47	178.55	143.44	251.5	381.49	250.29	365.35	204.38	
G38	177.67	112.93	157.22	126.93	219.64	325.93	216.16	311.0	177.67	
G39	155.5	101.24	139.82	113.02	193.2	280.25	188.33	267.5	155.5	
G40	137.83	91.31	124.66	100.96	171.5	243.24	164.87	231.42	137.83	
G41	122.34	82.64	112.28	90.48	152.9	212.36	145.06	202.76	122.34	
G42	109.63	76.01	101.75	81.53	136.11	186.06	127.26	178.78	109.63	
G43	98.97	70.17	93.03	74.25	122.06	163.85	112.6	159.63	98.97	
G44	89.69	65.44	85.52	68.27	109.91	145.16	100.17	142.19	89.69	
G45	81.76	61.4	79.95	63.67	99.15	128.97	89.65	127.77	81.76	
G46	75.22	58.39	74.94	59.45	90.16	115.52	81.07	115.52	75.22	
G47	69.75	55.51	71.09	56.21	83.11	104.21	74.25	105.27	69.75	
G48	65.11	53.05	67.66	53.33	77.26	94.89	68.64	96.14	65.11	
G49	61.03	50.83	64.56	51.11	72.02	86.77	64.18	88.53	61.03	
G50	57.92	49.16	61.91	48.42	67.94	80.6	60.38	82.13	57.92	
G51	55.09	46.75	59.45	46.47	64.37	75.31	57.32	77.31	55.09	
G52	52.73	44.94	57.32	44.8	61.73	71.23	54.77	72.53	52.73	
G53	50.5	43.13	55.28	42.94	58.8	67.57	52.4	69.1	50.5	
G54	48.18	41.65	53.15	41.27	56.3	64.46	50.36	65.71	48.18	
G55	46.14	39.79	51.2	39.74	54.12	61.4	48.09	62.89	46.14	
G56	44.52	38.21	49.34	38.17	52.13	58.94	46.28	60.24	44.52	
G57	42.67	36.45	47.12	36.92	49.95	56.58	44.47	57.69	42.67	
G58	40.86	34.87	45.49	35.2	47.86	54.45	42.76	55.37	40.86	
G59	39.19	32.79	43.64	33.58	46.01	52.22	41.09	53.33	39.19	
G60	37.61	30.79	41.51	31.63	44.57	50.27	39.33	51.11	37.61	
G61	35.52	29.63	39.1	30.33	42.57	48.23	37.75	49.07	35.52	
G62	33.67	29.17	37.52	29.5	40.53	46.28	36.13	46.61	33.67	
G63	31.49	28.06	36.36	28.89	38.54	44.34	34.18	44.66	31.49	
G64	30.38	27.32	35.48	27.92	37.61	42.67	32.14	42.76	30.38	
G65	29.45	26.39	34.6	27.08	36.36	40.67	30.79	40.49	29.45	
G66	28.75	25.69	33.48	26.11	35.38	38.68	29.91	38.54	28.75	
G67	27.96	24.86	32.51	25.32	34.27	37.33	29.03	37.38	27.96	
G68	27.27	23.98	31.49	24.3	33.25	36.5	28.24	36.22	27.27	
G69	26.16	22.82	30.47	23.47	32.23	35.38	27.64	35.15	26.16	
G70	25.32	21.94	29.31	22.31	31.16	34.32	26.71	34.18	25.32	
G71	24.35	20.73	28.24	21.33	30.01	33.21	25.74	33.21	24.35	
G72	23.56	19.8	27.08	20.36	29.03	32.23	24.76	32.19	23.56	
G73	22.54	18.78	25.88	19.2	27.92	31.26	23.98	31.16	22.54	

C Range: 0 - 360 Deg

C Interval: 45.0 Deg

Test Speed: High

Temperature: 25

Operators: QC01

Test Date: 2024/12/24 9:08:23

G Range: 0 - 90 Deg

G Interval: 1.0 Deg

Test System: Huipu CPM-1600B Goniophotometer

Humidity: 60

Test Distance: 6.81 m

Remarks:

Report No.:

Test Time: 2024/12/24 9:08:23

**LUMINOUS DISTRIBUTION INTENSITY DATA(Continue 2)**

Gamma\C	C0	C45	C90	C135	C180	C225	C270	C315	C360	
G74	21.66	17.67	24.72	18.04	26.62	30.24	22.86	30.05	21.66	
G75	20.41	16.46	23.65	16.88	25.46	28.99	21.98	28.99	20.41	
G76	19.52	15.35	22.21	15.72	24.25	27.96	20.73	27.83	19.52	
G77	18.13	14.05	20.87	14.47	22.96	26.71	19.8	26.76	18.13	
G78	17.02	12.75	19.62	13.08	21.66	25.65	18.6	25.51	17.02	
G79	15.86	11.32	18.23	11.69	20.36	24.16	17.48	24.3	15.86	
G80	14.7	10.11	16.74	10.34	19.01	22.96	16.19	22.91	14.7	
G81	13.26	8.77	15.35	9.0	17.44	21.61	14.98	21.66	13.26	
G82	11.92	7.23	13.87	7.61	16.0	20.27	13.59	20.27	11.92	
G83	10.57	5.7	12.38	6.08	14.52	18.78	12.34	18.88	10.57	
G84	9.18	4.17	10.71	4.5	13.08	17.48	10.99	17.67	9.18	
G85	7.74	2.64	9.04	3.15	11.45	15.81	9.74	16.0	7.74	
G86	6.49	1.3	6.86	1.58	9.41	13.91	8.44	14.01	6.49	
G87	4.92	0.0	4.59	0.23	7.14	11.78	7.33	11.87	4.92	
G88	3.57	0.0	2.46	0.0	4.64	9.51	5.89	9.51	3.57	
G89	2.18	0.0	1.95	0.0	2.64	7.51	4.54	7.37	2.18	
G90	1.45	0.0	0.0	0.0	0.0	7.51	3.69	7.37	1.45	

C Range: 0 - 360 Deg  
 C Interval: 45.0 Deg  
 Test Speed: High  
 Temperature: 25  
 Operators: QC01  
 Test Date: 2024/12/24 9:08:23

G Range: 0 - 90 Deg  
 G Interval: 1.0 Deg  
 Test System: Huipu CPM-1600B Goniophotometer  
 Humidity: 60  
 Test Distance: 6.81 m  
 Remarks: