

Report No.:

Test Time: 2025/2/11 18:24:38

## LUMINAIRE PHOTOMETRIC TEST REPORT

### Luminaire Property

Manufacturer: InBright  
 Luminaire Type: IBSP104SCT120H140-38°-40W  
 Lamp Type:  
 Luminous Width: 111 mm  
 Luminous Length: 111 mm  
 Luminous Height: 105 mm

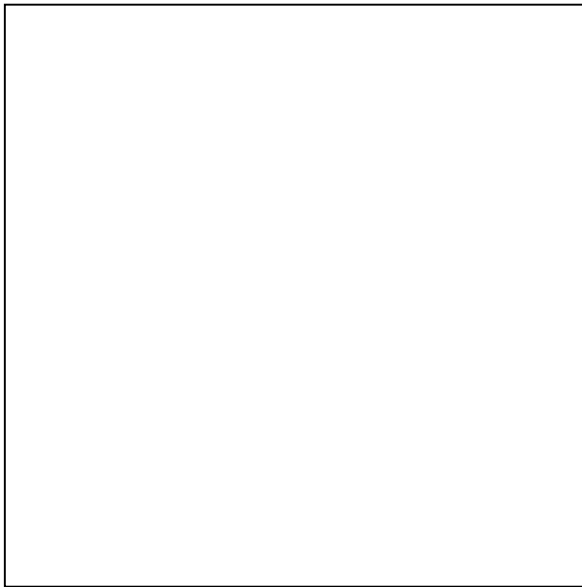
Voltage(V): 219.20 V  
 Current(A): 0.1820 A  
 Power(W): 38.98 W  
 Power Factor: 0.9730  
 Lamp Luminous Flux: 3462.40

### Photometric Results

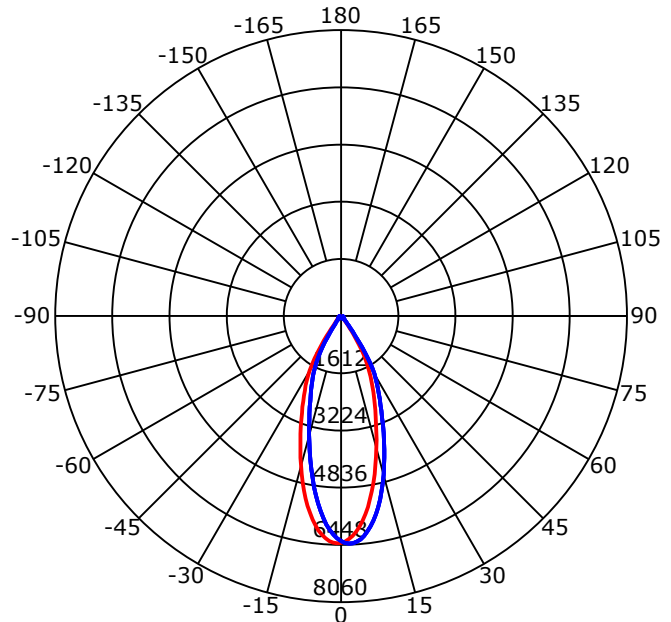
CIE Class: Direct  
 Luminaire Luminous Flux: 3462.396 lm  
 Downward Ratio: 100.00%  
 Luminaire Efficacy Rating(LER): 88.82 lm/W  
 Beam Angle(50%) C0-180,C90-270: 38.5,37.7  
 Field Angle(10%) C0-180,C90-270: 70.3,69.7  
 S/MH C0-180,C90-270: 0.611,0.611

Max. Intensity: 6447.76 cd  
 Max.Intensity Angle: C=315 Gamma=0  
 Upward Ratio: 0.00%  
 Efficacy: 100.00%  
 Center Intensity: 6394.28 cd  
 Effective Luminous Flux: 3079.80 lm  
 ERP( $\phi$ use)(120deg): 3398.71 lm

Picture of Luminaire



Luminous Intensity Distribution Curve



Beam Angle(50%) C0-180,C90-270: 38.5 deg,37.7 deg

C0-180 — C90-270 —

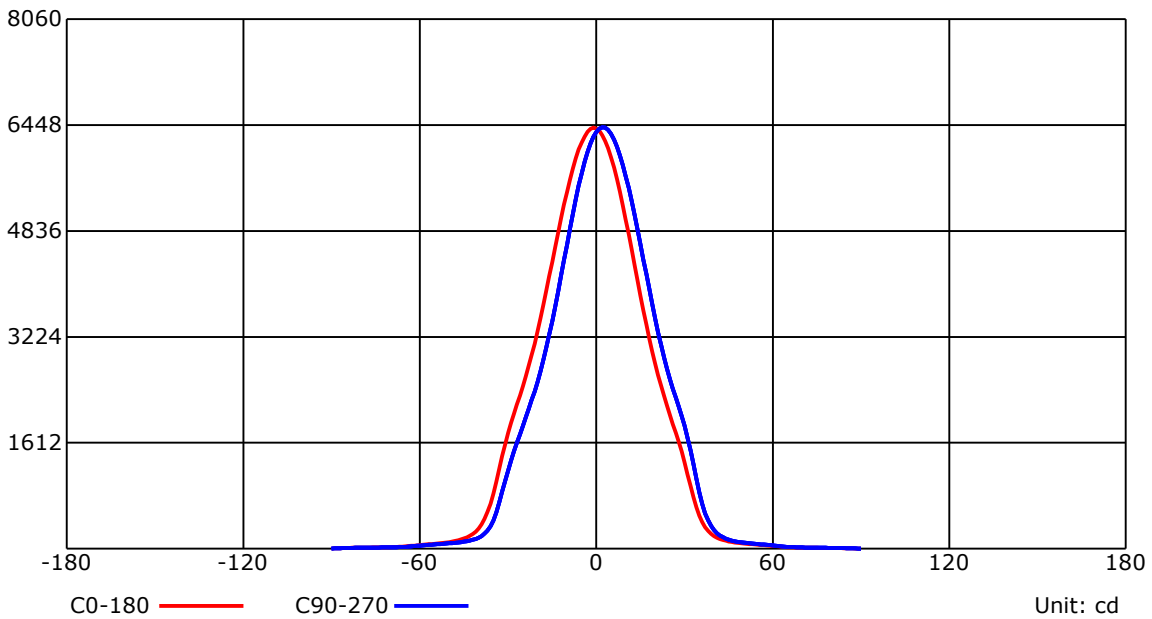
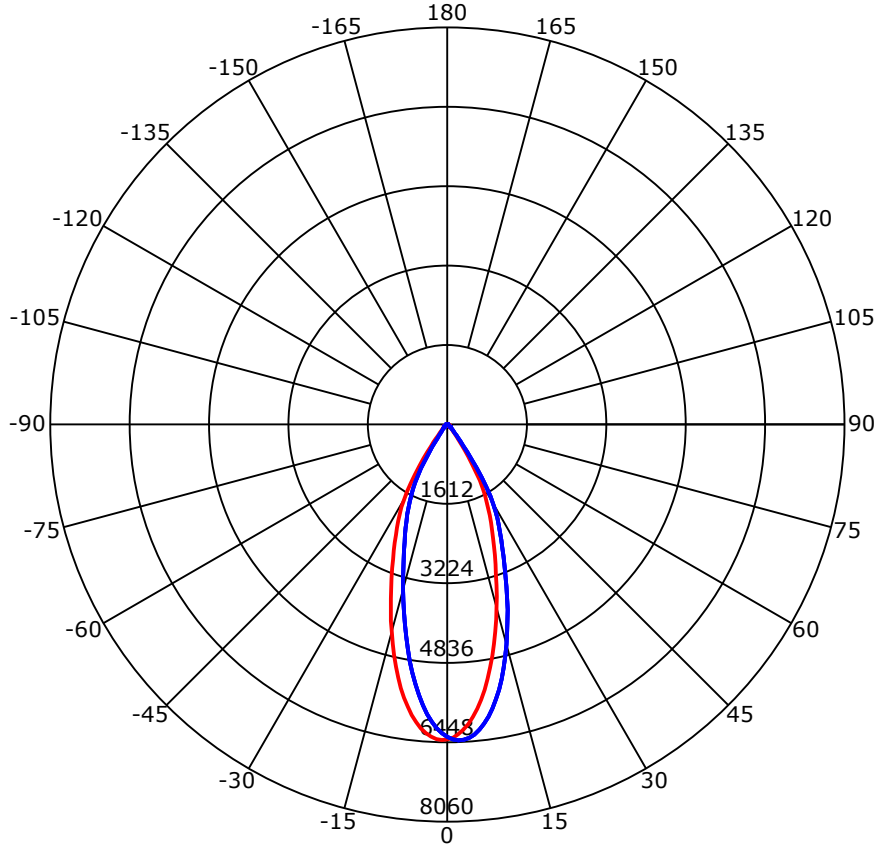
C Range: 0 - 360 Deg  
 C Interval: 45.0 Deg  
 Test Speed: High  
 Temperature: 25  
 Operators: QC01  
 Test Date: 2025/2/11 18:24:38

G Range: 0 - 90 Deg  
 G Interval: 1.0 Deg  
 Test System: Huipu CPM-1600B Goniophotometer  
 Humidity: 60  
 Test Distance: 6.87 m  
 Remarks:

Report No.:

Test Time: 2025/2/11 18:24:38

## Luminous Intensity Distribution Curve



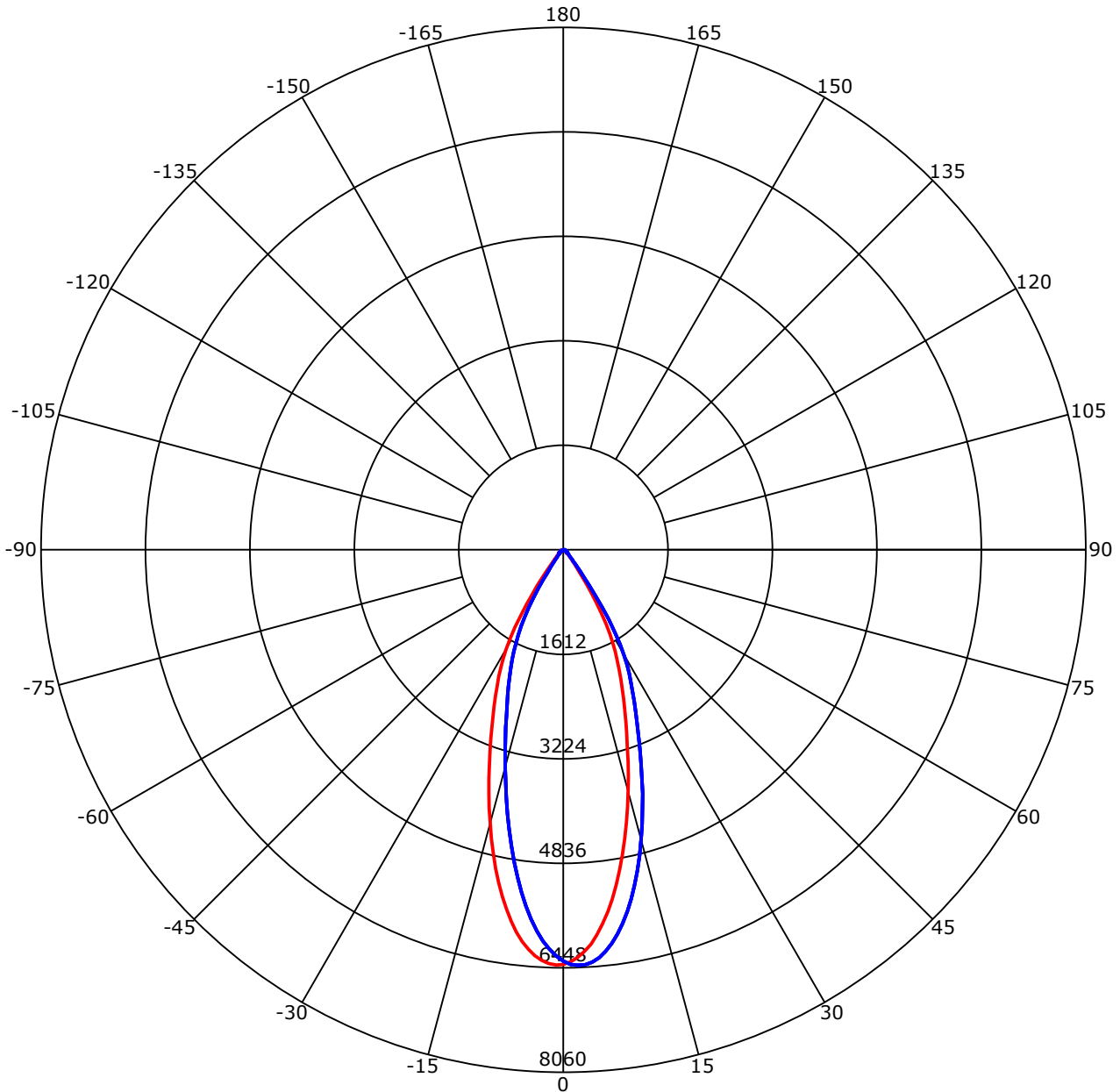
C Range: 0 - 360 Deg  
 C Interval: 45.0 Deg  
 Test Speed: High  
 Temperature: 25  
 Operators: QC01  
 Test Date: 2025/2/11 18:24:38

G Range: 0 - 90 Deg  
 G Interval: 1.0 Deg  
 Test System: Huipu CPM-1600B Goniophotometer  
 Humidity: 60  
 Test Distance: 6.87 m  
 Remarks:

Report No.:

Test Time: 2025/2/11 18:24:38

## Luminous Intensity Distribution Curve



C0-180 —    C90-270 —  
 Unit: cd/klm

C Range: 0 - 360 Deg  
 C Interval: 45.0 Deg  
 Test Speed: High  
 Temperature: 25  
 Operators: QC01  
 Test Date: 2025/2/11 18:24:38

G Range: 0 - 90 Deg  
 G Interval: 1.0 Deg  
 Test System: Huipu CPM-1600B Goniophotometer  
 Humidity: 60  
 Test Distance: 6.87 m  
 Remarks:

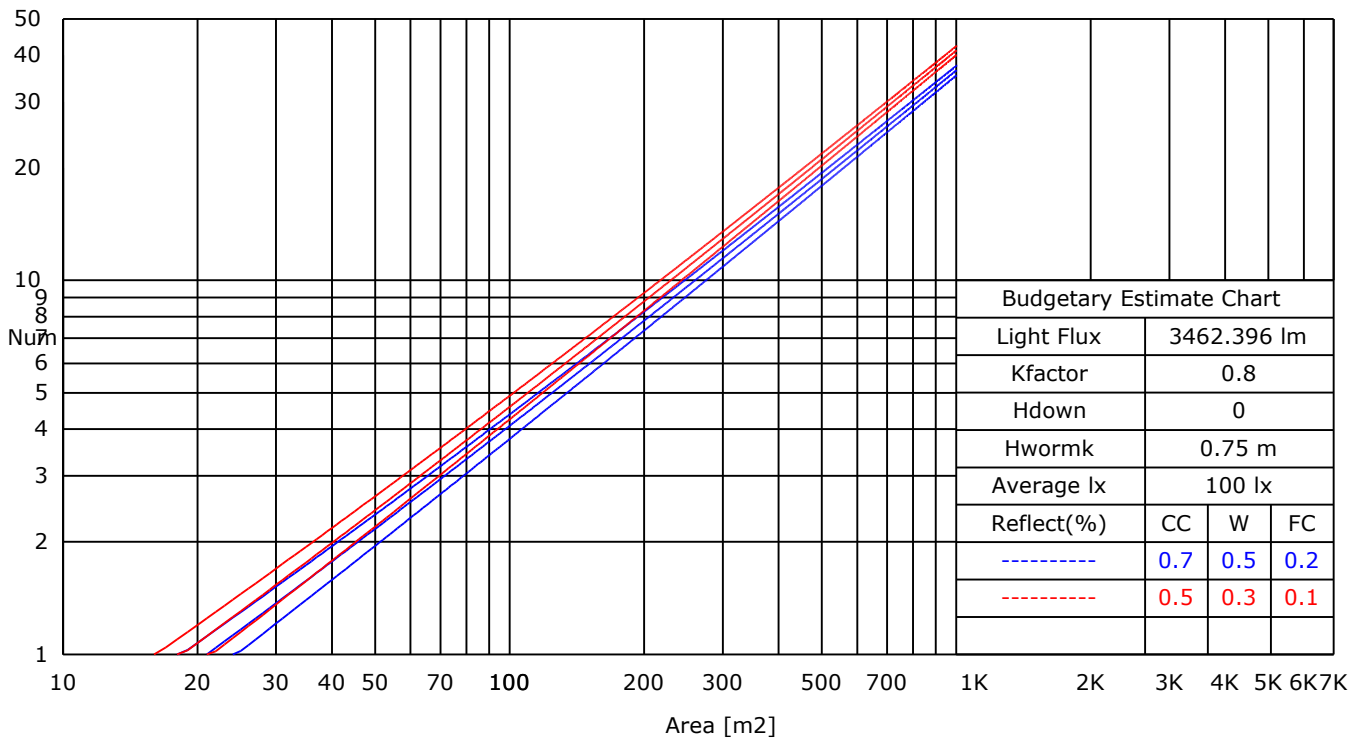
Report No.:

Test Time: 2025/2/11 18:24:38

### UTILIZATION FACTORS TABLE

RHOCC	80			70			50			30			10			0
RHOW	50	30	10	50	30	10	50	30	10	50	30	10	50	30	10	0
RCR	COEFFICIENTS OF UTILIZATION FOR RHOFC=20															
0	1.19	1.19	1.19	1.16	1.16	1.16	1.11	1.11	1.11	1.06	1.06	1.06	1.02	1.02	1.02	1.00
1	1.02	0.99	0.98	1.00	0.98	0.96	0.97	0.94	0.92	0.92	0.90	0.87	0.86	0.84	0.81	0.76
2	0.97	0.95	0.93	0.96	0.93	0.92	0.93	0.90	0.88	0.89	0.86	0.83	0.84	0.81	0.78	0.73
3	0.93	0.91	0.90	0.92	0.90	0.88	0.89	0.86	0.84	0.86	0.82	0.80	0.81	0.78	0.75	0.70
4	0.89	0.88	0.86	0.88	0.86	0.85	0.86	0.83	0.81	0.83	0.79	0.77	0.79	0.75	0.72	0.68
5	0.86	0.84	0.83	0.85	0.83	0.82	0.83	0.80	0.78	0.80	0.77	0.74	0.77	0.73	0.69	0.65
6	0.83	0.82	0.81	0.82	0.80	0.79	0.80	0.77	0.75	0.78	0.74	0.71	0.75	0.70	0.67	0.63
7	0.81	0.79	0.78	0.80	0.78	0.76	0.78	0.75	0.73	0.75	0.72	0.69	0.73	0.68	0.65	0.61
8	0.78	0.77	0.76	0.77	0.75	0.74	0.76	0.73	0.71	0.73	0.70	0.67	0.71	0.66	0.63	0.60
9	0.76	0.75	0.74	0.75	0.73	0.72	0.73	0.71	0.69	0.71	0.68	0.65	0.69	0.65	0.61	0.58
10	0.74	0.73	0.72	0.73	0.71	0.70	0.71	0.69	0.67	0.69	0.66	0.63	0.67	0.63	0.60	0.57

### LUMINAIRE BUDGETARY ESTIMATE DIAGRAM



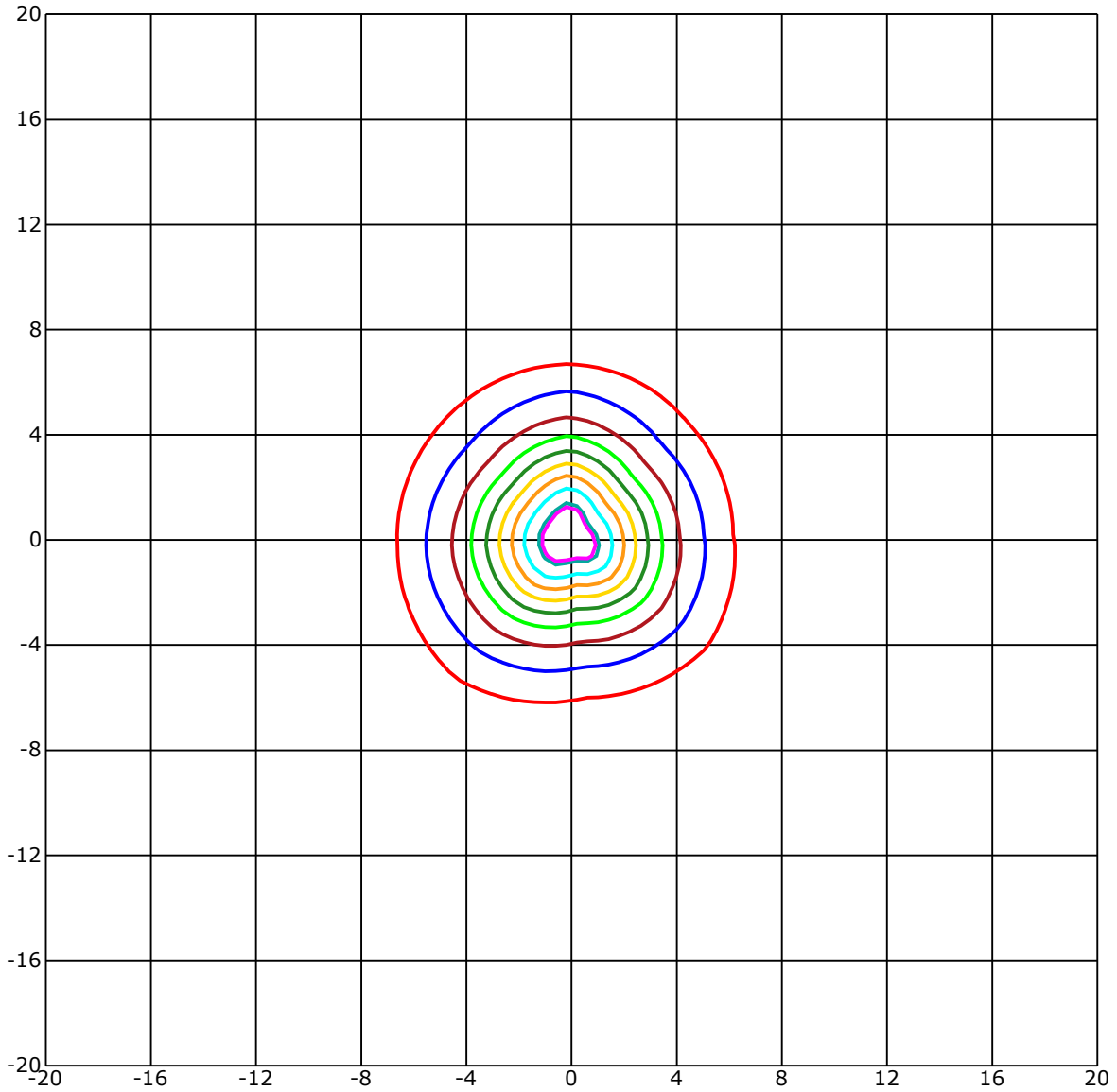
C Range: 0 - 360 Deg  
 C Interval: 45.0 Deg  
 Test Speed: High  
 Temperature: 25  
 Operators: QC01  
 Test Date: 2025/2/11 18:24:38

G Range: 0 - 90 Deg  
 G Interval: 1.0 Deg  
 Test System: Huipu CPM-1600B Goniophotometer  
 Humidity: 60  
 Test Distance: 6.87 m  
 Remarks:

Report No.:

Test Time: 2025/2/11 18:24:38

## ISOLX DIAGRAM



Unit of illumination:lx    Height of plane:10.0(m)/32.81(ft)

— 59.319(92%Emax)	— 32.239(50%Emax)
— 58.03(90%Emax)	— 25.791(40%Emax)
— 51.582(80%Emax)	— 19.343(30%Emax)
— 45.134(70%Emax)	— 12.896(20%Emax)
— 38.687(60%Emax)	— 6.448(10%Emax)

C Range: 0 - 360 Deg  
 C Interval: 45.0 Deg  
 Test Speed: High  
 Temperature: 25  
 Operators: QC01  
 Test Date: 2025/2/11 18:24:38

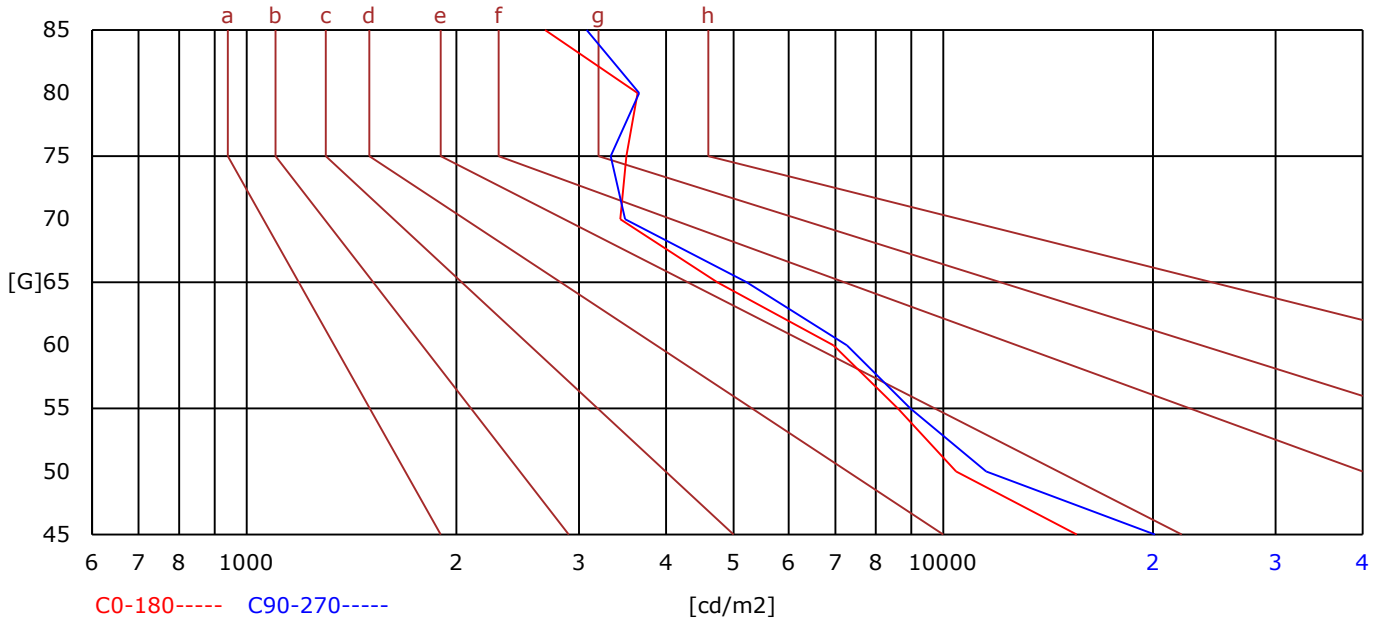
G Range: 0 - 90 Deg  
 G Interval: 1.0 Deg  
 Test System: Huipu CPM-1600B Goniophotometer  
 Humidity: 60  
 Test Distance: 6.87 m  
 Remarks:

Report No.:

Test Time: 2025/2/11 18:24:38

## BRIGHT LIMIT DIAGRAM

C/G	45	50	55	60	65	70	75	80	85
C0	15553	10429	8602	6956	4740	3438	3508	3640	2681
C90	20120	11525	8969	7270	5221	3494	3330	3662	3077
Dazzle	Quality	Illuminance	---	---	---	---	---	---	---
1.15	A	2000	1000	500	<=300				
1.5	B		2000	1000	500	<=300			
1.85	C			2000	1000	500	<=300		
2.2	D				2000	1000	500	<=300	
2.55	E					2000	1000	500	<=300
---	---	a	b	c	d	e	f	g	h



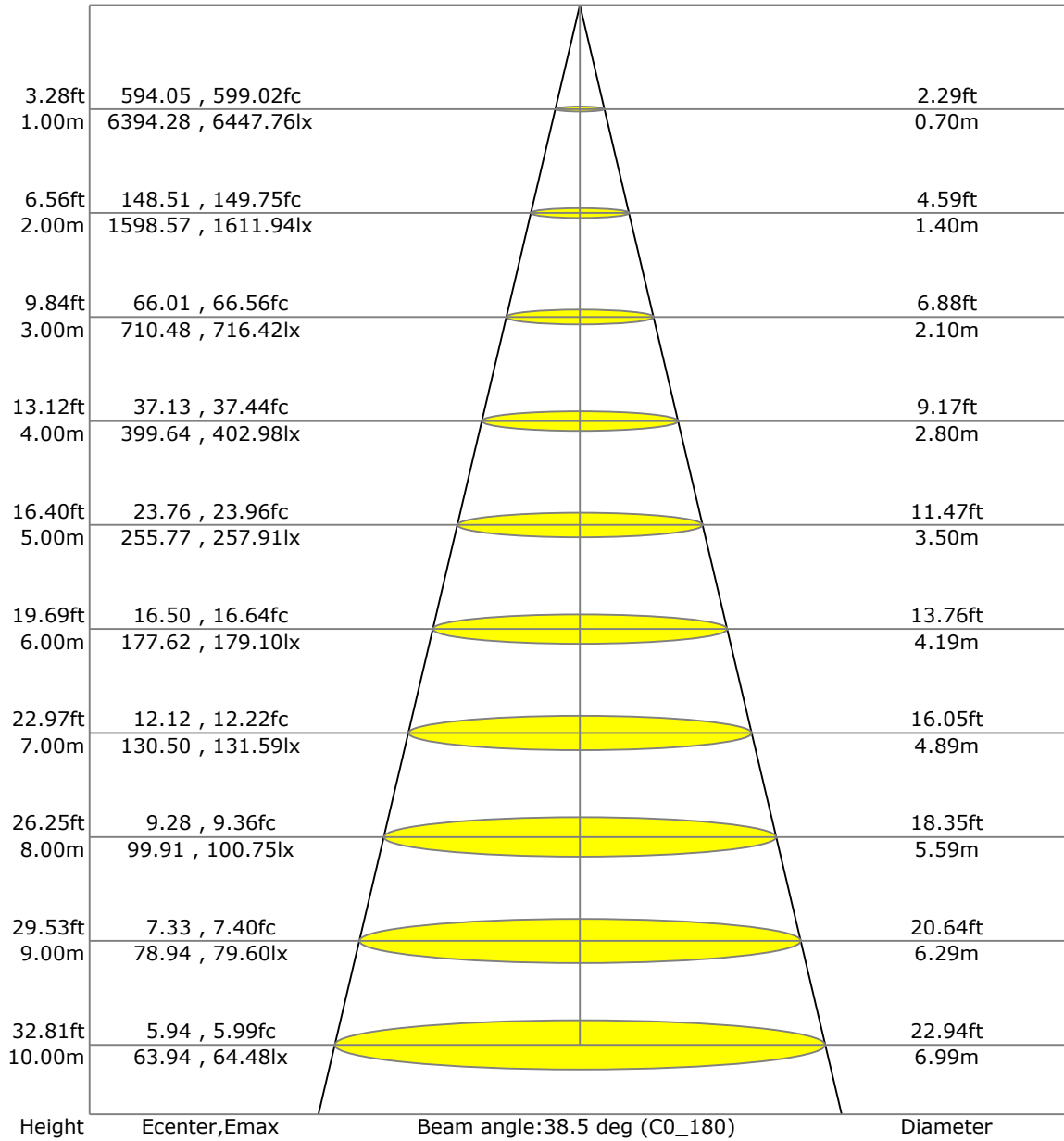
C Range: 0 - 360 Deg  
 C Interval: 45.0 Deg  
 Test Speed: High  
 Temperature: 25  
 Operators: QC01  
 Test Date: 2025/2/11 18:24:38

G Range: 0 - 90 Deg  
 G Interval: 1.0 Deg  
 Test System: Huipu CPM-1600B Goniophotometer  
 Humidity: 60  
 Test Distance: 6.87 m  
 Remarks:

Report No.:

Test Time: 2025/2/11 18:24:38

## LX-DISTANCE DIAGRAM



C Range: 0 - 360 Deg  
 C Interval: 45.0 Deg  
 Test Speed: High  
 Temperature: 25  
 Operators: QC01  
 Test Date: 2025/2/11 18:24:38

G Range: 0 - 90 Deg  
 G Interval: 1.0 Deg  
 Test System: Huipu CPM-1600B Goniophotometer  
 Humidity: 60  
 Test Distance: 6.87 m  
 Remarks:

Report No.:

Test Time: 2025/2/11 18:24:38

## UGR(Unified Glare Rating) TABLE

RHOCC	70	70	50	50	30	70	70	50	50	30
RHOW	50	30	50	30	30	50	30	50	30	30
RHOF	20	20	20	20	20	20	20	20	20	20
Room Size X	Viewed Endwise					Viewed Crosswise				
2H 2H	9.95	10.00	10.15	10.19	10.43	10.02	10.07	10.22	10.26	10.50
3H	9.93	9.99	10.14	10.18	10.43	10.00	10.05	10.21	10.25	10.49
4H	9.92	9.97	10.13	10.17	10.42	9.99	10.04	10.20	10.24	10.49
6H	9.90	9.96	10.12	10.16	10.41	9.97	10.03	10.19	10.23	10.48
8H	9.90	9.95	10.11	10.15	10.40	9.96	10.02	10.18	10.22	10.47
12H	9.89	9.94	10.11	10.15	10.40	9.95	10.01	10.17	10.21	10.47
4H 2H	10.08	10.14	10.29	10.33	10.58	10.19	10.25	10.40	10.44	10.69
3H	10.09	10.14	10.31	10.35	10.60	10.19	10.25	10.42	10.45	10.71
4H	10.08	10.13	10.31	10.34	10.60	10.19	10.24	10.41	10.45	10.71
6H	10.06	10.12	10.30	10.34	10.60	10.17	10.22	10.41	10.44	10.71
8H	10.05	10.10	10.30	10.33	10.60	10.16	10.21	10.40	10.44	10.70
12H	10.04	10.09	10.29	10.32	10.59	10.15	10.20	10.39	10.43	10.70
8H 4H	10.16	10.22	10.38	10.42	10.67	10.29	10.34	10.51	10.55	10.80
6H	10.20	10.25	10.46	10.49	10.76	10.33	10.38	10.58	10.62	10.89
8H	10.19	10.24	10.46	10.48	10.76	10.32	10.37	10.58	10.61	10.89
12H	10.18	10.22	10.45	10.48	10.76	10.31	10.35	10.58	10.60	10.89
12H 4H	10.25	10.30	10.50	10.53	10.80	10.40	10.45	10.65	10.69	10.95
6H	10.26	10.30	10.52	10.55	10.82	10.41	10.46	10.67	10.70	10.98

C Range: 0 - 360 Deg  
 C Interval: 45.0 Deg  
 Test Speed: High  
 Temperature: 25  
 Operators: QC01  
 Test Date: 2025/2/11 18:24:38

G Range: 0 - 90 Deg  
 G Interval: 1.0 Deg  
 Test System: Huipu CPM-1600B Goniophotometer  
 Humidity: 60  
 Test Distance: 6.87 m  
 Remarks:



Report No.:

Test Time: 2025/2/11 18:24:38

**ZONAL LUMINOUS FLUX TABLE**

Gamma [deg]	Imean [cd]	Zonal Flux [lm]	Sum Flux [lm]	Zonal Flux [%]	Sum Flux [%]
0	6372.57	0.00	0.00	0.00	0.00
5	6161.15	148.40	148.40	4.29	4.29
10	5386.10	400.79	549.19	11.58	15.86
15	4292.89	545.28	1094.47	15.75	31.61
20	3214.53	577.95	1672.41	16.69	48.30
25	2372.00	544.32	2216.73	15.72	64.02
30	1692.02	476.60	2693.33	13.77	77.79
35	917.44	338.32	3031.66	9.77	87.56
40	376.45	169.22	3200.88	4.89	92.45
45	176.39	82.28	3283.16	2.38	94.82
50	105.67	49.37	3332.52	1.43	96.25
55	77.54	36.91	3369.44	1.07	97.32
60	57.65	29.28	3398.71	0.85	98.16
65	37.42	21.22	3419.93	0.61	98.77
70	24.06	13.91	3433.84	0.40	99.18
75	18.20	10.18	3444.02	0.29	99.47
80	15.17	8.61	3452.63	0.25	99.72
85	10.70	6.60	3459.23	0.19	99.91
90	3.36	3.17	3462.40	0.09	100.00

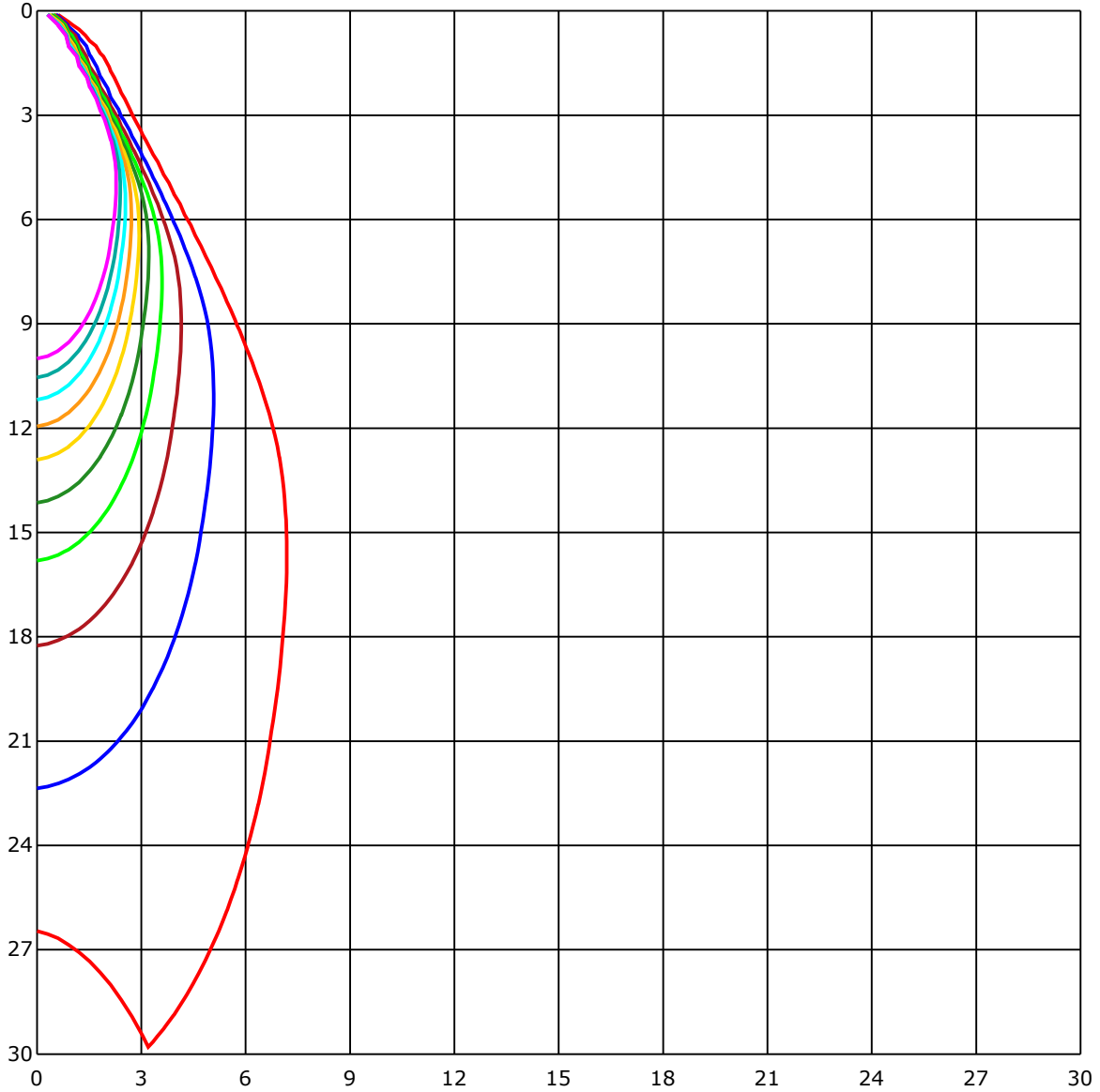
C Range: 0 - 360 Deg  
C Interval: 45.0 Deg  
Test Speed: High  
Temperature: 25  
Operators: QC01  
Test Date: 2025/2/11 18:24:38

G Range: 0 - 90 Deg  
G Interval: 1.0 Deg  
Test System: Huipu CPM-1600B Goniophotometer  
Humidity: 60  
Test Distance: 6.87 m  
Remarks:

Report No.:

Test Time: 2025/2/11 18:24:38

## SPACE ISOLX DIAGRAM



Unit of illumination:lx

- |          |          |
|----------|----------|
| — 63.952 | — 31.976 |
| — 57.557 | — 25.581 |
| — 51.162 | — 19.186 |
| — 44.767 | — 12.79  |
| — 38.371 | — 6.395  |

C Range: 0 - 360 Deg  
 C Interval: 45.0 Deg  
 Test Speed: High  
 Temperature: 25  
 Operators: QC01  
 Test Date: 2025/2/11 18:24:38

G Range: 0 - 90 Deg  
 G Interval: 1.0 Deg  
 Test System: Huipu CPM-1600B Goniophotometer  
 Humidity: 60  
 Test Distance: 6.87 m  
 Remarks:

Report No.:

Test Time: 2025/2/11 18:24:38

## LUMINOUS DISTRIBUTION INTENSITY DATA

Gamma\C	C0	C45	C90	C135	C180	C225	C270	C315	C360	
G0	6394.28	6305.6	6342.65	6447.76	6394.28	6305.6	6342.65	6447.76	6394.28	
G1	6358.46	6258.78	6394.8	6431.1	6406.89	6322.59	6265.95	6429.3	6358.46	
G2	6291.82	6185.63	6414.29	6386.78	6388.05	6309.8	6167.13	6381.73	6291.82	
G3	6206.72	6090.38	6407.73	6329.39	6344.87	6275.58	6039.13	6312.82	6206.72	
G4	6096.42	5973.38	6374.56	6238.58	6274.97	6216.02	5892.25	6223.01	6096.42	
G5	5960.92	5830.42	6315.51	6130.88	6186.33	6126.16	5717.34	6106.19	5960.92	
G6	5800.31	5670.0	6226.03	5997.03	6076.7	6017.75	5524.82	5962.71	5800.31	
G7	5624.74	5490.09	6116.11	5842.41	5942.51	5885.45	5315.69	5799.32	5624.74	
G8	5435.9	5298.51	5985.32	5671.32	5787.05	5730.36	5092.45	5615.16	5435.9	
G9	5225.4	5087.68	5837.55	5486.36	5613.46	5553.85	4868.41	5416.08	5225.4	
G10	5006.27	4873.98	5667.92	5277.75	5431.89	5364.21	4626.19	5214.74	5006.27	
G11	4781.42	4650.31	5486.64	5069.61	5232.81	5164.95	4385.82	4997.21	4781.42	
G12	4551.76	4414.7	5286.38	4840.18	5023.73	4953.08	4151.58	4766.7	4551.76	
G13	4315.78	4180.98	5079.61	4613.03	4806.86	4727.43	3911.44	4527.55	4315.78	
G14	4084.99	3949.25	4858.35	4376.19	4589.29	4504.99	3686.08	4294.02	4084.99	
G15	3851.5	3723.51	4634.83	4143.23	4366.19	4279.67	3466.28	4066.82	3851.5	
G16	3632.75	3496.44	4401.44	3919.18	4149.93	4061.58	3255.12	3840.55	3632.75	
G17	3409.65	3282.45	4177.07	3682.54	3930.46	3841.36	3061.71	3622.32	3409.65	
G18	3194.43	3077.24	3953.54	3473.55	3716.66	3625.95	2876.79	3416.11	3194.43	
G19	3000.02	2894.59	3724.97	3259.84	3509.04	3419.09	2699.76	3208.96	3000.02	
G20	2818.13	2710.47	3504.98	3072.94	3315.35	3220.86	2540.94	3014.99	2818.13	
G21	2641.0	2548.21	3293.73	2886.47	3121.46	3034.24	2396.09	2835.45	2641.0	
G22	2476.28	2393.4	3095.93	2716.94	2946.13	2862.78	2260.68	2671.11	2476.28	
G23	2324.97	2253.13	2910.44	2555.71	2781.46	2700.84	2124.66	2507.38	2324.97	
G24	2178.75	2113.81	2738.69	2409.97	2623.53	2552.31	1996.76	2362.21	2178.75	
G25	2036.22	1983.03	2583.75	2263.8	2473.83	2413.04	1866.35	2214.2	2036.22	
G26	1897.08	1852.15	2440.13	2131.65	2330.06	2276.54	1741.14	2082.0	1897.08	
G27	1759.41	1726.32	2295.85	1996.19	2194.47	2145.1	1611.11	1945.65	1759.41	
G28	1623.9	1597.52	2160.3	1865.69	2052.97	2015.02	1481.84	1811.75	1623.9	
G29	1481.23	1471.74	2021.07	1731.56	1916.76	1889.48	1342.28	1682.0	1481.23	
G30	1313.21	1341.43	1870.79	1600.54	1765.02	1757.0	1192.71	1552.87	1313.21	
G31	1133.62	1205.88	1694.09	1467.07	1596.81	1628.53	1036.82	1414.02	1133.62	
G32	953.47	1073.12	1494.21	1329.87	1407.55	1491.23	869.84	1272.48	953.47	
G33	782.95	943.04	1280.69	1193.56	1213.9	1347.09	700.97	1134.94	782.95	
G34	630.17	817.78	1063.25	1058.39	1018.89	1202.34	550.17	998.54	630.17	
G35	504.82	697.76	859.36	923.17	841.8	1062.03	429.49	868.8	504.82	
G36	404.62	591.33	682.8	797.06	685.2	923.22	340.01	747.74	404.62	

C Range: 0 - 360 Deg  
 C Interval: 45.0 Deg  
 Test Speed: High  
 Temperature: 25  
 Operators: QC01  
 Test Date: 2025/2/11 18:24:38

G Range: 0 - 90 Deg  
 G Interval: 1.0 Deg  
 Test System: Huipu CPM-1600B Goniophotometer  
 Humidity: 60  
 Test Distance: 6.87 m  
 Remarks:

Report No.:

Test Time: 2025/2/11 18:24:38

### LUMINOUS DISTRIBUTION INTENSITY DATA(Continue 1)

Gamma\C	C0	C45	C90	C135	C180	C225	C270	C315	C360	
G37	328.16	498.59	538.99	680.34	558.06	792.01	275.35	636.92	328.16	
G38	268.22	418.59	429.92	578.21	454.84	675.91	228.15	542.06	268.22	
G39	223.76	352.51	346.47	485.99	373.85	575.09	192.7	461.26	223.76	
G40	190.44	296.21	283.98	407.55	309.52	487.12	167.88	394.66	190.44	
G41	165.76	250.29	236.98	342.41	261.38	414.91	149.76	338.21	165.76	
G42	147.11	211.58	202.57	289.08	225.03	354.5	135.88	292.9	147.11	
G43	133.0	180.95	175.62	243.3	197.14	304.09	124.79	254.53	133.0	
G44	121.01	154.99	154.33	206.16	174.16	262.46	115.35	222.63	121.01	
G45	110.3	135.5	137.77	175.29	156.6	228.34	107.56	196.43	110.3	
G46	101.8	118.65	124.88	150.56	140.98	200.63	100.86	176.19	101.8	
G47	94.39	106.0	114.22	129.41	128.66	178.92	95.15	159.34	94.39	
G48	88.16	96.0	105.53	112.8	117.66	160.71	90.19	145.7	88.16	
G49	83.02	88.59	98.83	99.82	108.69	145.98	85.99	134.46	83.02	
G50	78.68	82.59	93.59	91.28	100.91	133.76	82.03	125.4	78.68	
G51	74.76	77.5	88.21	83.68	95.1	124.18	78.39	117.85	74.76	
G52	70.98	72.64	83.44	77.69	89.63	116.1	74.57	111.43	70.98	
G53	67.54	68.72	78.82	72.26	84.58	109.12	70.84	105.15	67.54	
G54	63.95	64.42	74.62	67.92	79.76	102.56	67.44	99.68	63.95	
G55	60.51	60.79	70.28	63.39	75.7	96.85	64.05	94.39	60.51	
G56	57.2	57.06	66.5	59.42	71.46	91.61	60.74	89.67	57.2	
G57	53.76	53.62	62.54	55.69	67.4	86.56	57.53	85.14	53.76	
G58	50.08	50.22	58.95	52.44	63.39	81.89	54.37	80.71	50.08	
G59	46.11	46.63	54.98	48.52	59.99	77.78	50.6	76.55	46.11	
G60	42.15	42.85	50.88	44.79	55.65	73.58	46.72	72.64	42.15	
G61	38.09	39.6	46.35	41.3	51.63	69.71	43.0	68.58	38.09	
G62	33.51	35.78	42.24	37.95	47.24	65.75	39.32	64.75	33.51	
G63	28.46	32.24	37.38	34.64	43.23	62.25	34.64	61.17	28.46	
G64	24.31	28.37	31.67	30.82	38.09	58.67	30.06	57.39	24.31	
G65	22.28	24.68	27.75	27.19	33.37	54.94	27.7	53.47	22.28	
G66	20.63	21.14	25.34	23.65	30.58	51.26	25.86	49.89	20.63	
G67	19.26	18.41	23.32	20.11	28.7	47.24	24.16	45.4	19.26	
G68	17.84	16.8	21.66	17.51	26.62	43.42	22.7	41.53	17.84	
G69	16.71	15.57	20.11	15.81	24.87	40.21	21.47	37.71	16.71	
G70	15.67	14.49	18.88	14.73	23.22	36.34	20.34	34.41	15.67	
G71	14.82	13.5	17.65	13.45	21.85	33.32	19.26	32.19	14.82	
G72	14.4	12.74	16.66	12.41	20.67	31.06	18.78	30.49	14.4	
G73	14.25	12.18	16.0	11.7	19.96	29.31	18.5	28.98	14.25	

C Range: 0 - 360 Deg  
 C Interval: 45.0 Deg  
 Test Speed: High  
 Temperature: 25  
 Operators: QC01  
 Test Date: 2025/2/11 18:24:38

G Range: 0 - 90 Deg  
 G Interval: 1.0 Deg  
 Test System: Huipu CPM-1600B Goniophotometer  
 Humidity: 60  
 Test Distance: 6.87 m  
 Remarks:

Report No.:

Test Time: 2025/2/11 18:24:38

**LUMINOUS DISTRIBUTION INTENSITY DATA(Continue 2)**

Gamma\C	C0	C45	C90	C135	C180	C225	C270	C315	C360	
G74	13.92	11.66	15.62	11.28	19.4	27.94	18.22	27.56	13.92	
G75	13.73	11.19	15.29	10.62	19.07	26.67	18.12	26.43	13.73	
G76	13.36	10.52	14.77	10.19	18.6	25.25	17.7	25.44	13.36	
G77	13.03	10.01	14.3	9.53	18.22	24.35	17.23	24.78	13.03	
G78	12.41	9.34	13.73	9.11	17.56	23.55	16.85	23.98	12.41	
G79	11.94	8.64	13.17	8.45	17.04	22.84	16.09	23.17	11.94	
G80	11.28	7.79	12.6	7.83	16.14	21.95	15.39	22.37	11.28	
G81	10.71	6.99	11.75	7.08	15.43	21.14	14.54	21.29	10.71	
G82	9.72	5.99	11.14	6.28	14.54	20.25	13.69	20.25	9.72	
G83	8.78	4.96	10.34	5.24	13.73	19.21	12.65	19.11	8.78	
G84	7.83	3.82	9.53	4.34	12.7	18.22	11.42	17.75	7.83	
G85	6.65	2.88	8.59	3.3	11.7	16.66	10.1	16.33	6.65	
G86	5.62	1.65	7.46	2.31	10.15	14.87	8.83	14.35	5.62	
G87	4.25	0.52	5.99	1.46	8.26	12.74	7.17	11.85	4.25	
G88	2.88	0.0	4.15	0.38	5.76	10.24	5.66	9.25	2.88	
G89	1.56	0.0	2.83	0.0	4.06	7.88	3.92	6.65	1.56	
G90	0.75	0.0	0.0	0.0	0.0	7.88	2.77	6.65	0.75	

C Range: 0 - 360 Deg  
 C Interval: 45.0 Deg  
 Test Speed: High  
 Temperature: 25  
 Operators: QC01  
 Test Date: 2025/2/11 18:24:38

G Range: 0 - 90 Deg  
 G Interval: 1.0 Deg  
 Test System: Huipu CPM-1600B Goniophotometer  
 Humidity: 60  
 Test Distance: 6.87 m  
 Remarks: