

Report No.:

Test Time: 2024/10/8 11:29:41

LUMINAIRE PHOTOMETRIC TEST REPORT

Luminaire Property

Manufacturer: InBright
 Luminaire Type: IBSP100CT055-60°-8W
 Lamp Type:
 Luminous Width: 45 mm
 Luminous Length: 45 mm
 Luminous Height: 50 mm

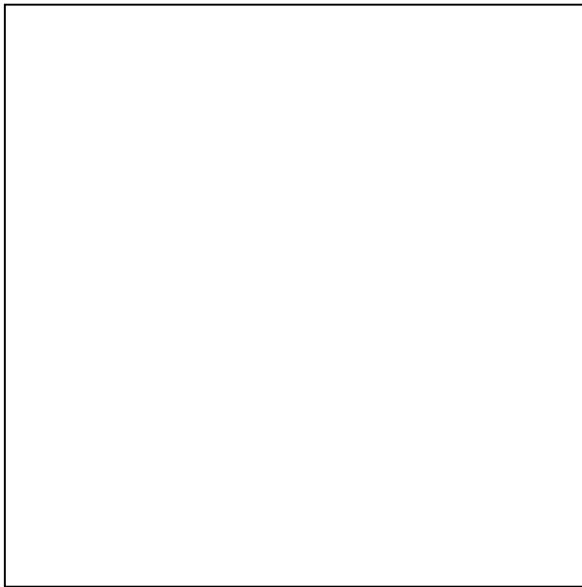
Voltage(V): 219.90 V
 Current(A): 0.0420 A
 Power(W): 8.78 W
 Power Factor: 0.9330
 Lamp Luminous Flux: 793.81

Photometric Results

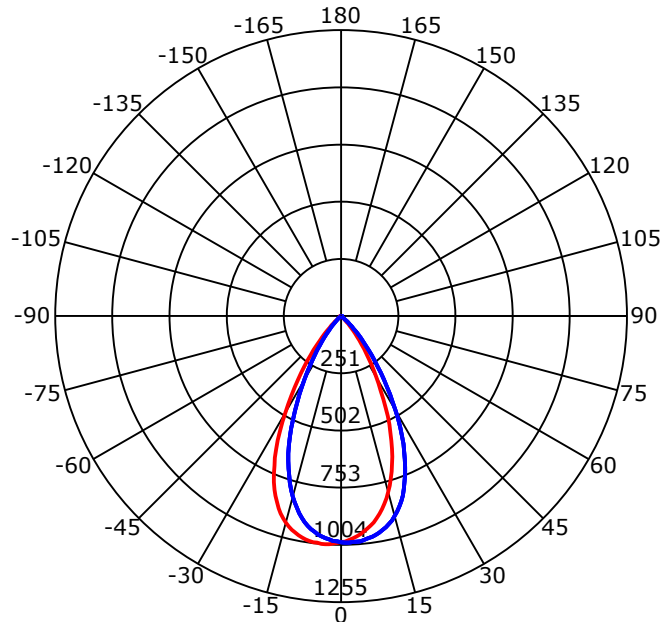
CIE Class: Direct
 Luminaire Luminous Flux: 793.8088 lm
 Downward Ratio: 100.00%
 Luminaire Efficacy Rating(LER): 90.41 lm/W
 Beam Angle(50%) C0-180,C90-270: 54.2,54.5
 Field Angle(10%) C0-180,C90-270: 82.2,82.8
 S/MH C0-180,C90-270: 0.890,0.849

Max. Intensity: 1004.27 cd
 Max.Intensity Angle: C=180 Gamma=5
 Upward Ratio: 0.00%
 Efficacy: 100.00%
 Center Intensity: 991.66 cd
 Effective Luminous Flux: 759.61 lm
 ERP(ϕ use)(120deg): 793.14 lm

Picture of Luminaire



Luminous Intensity Distribution Curve



Beam Angle(50%) C0-180,C90-270: 54.2 deg,54.5 deg

C0-180 — C90-270 —

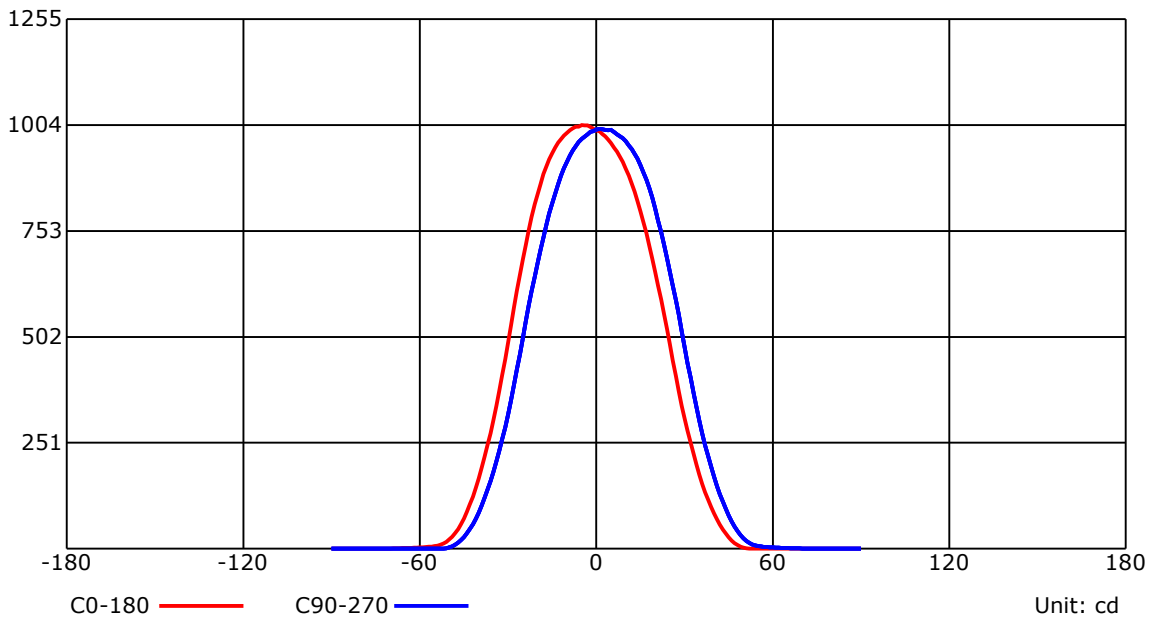
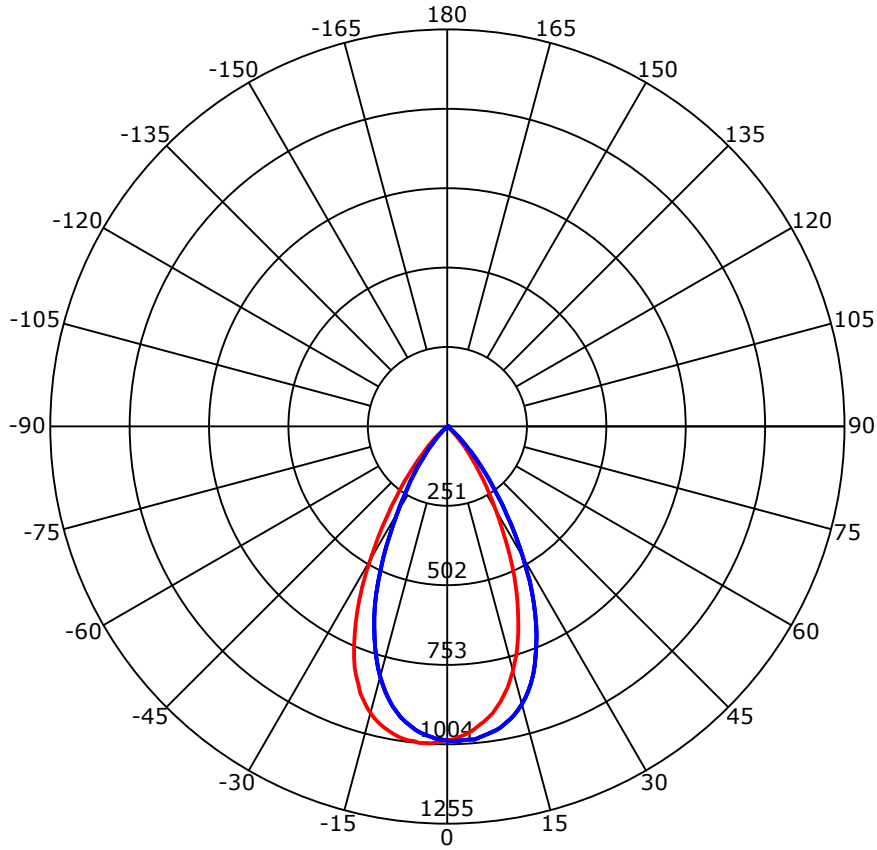
C Range: 0 - 360 Deg
 C Interval: 45.0 Deg
 Test Speed: High
 Temperature: 25
 Operators: QC01
 Test Date: 2024/10/8 11:29:41

G Range: 0 - 90 Deg
 G Interval: 1.0 Deg
 Test System: Huipu CPM-1600B Goniophotometer
 Humidity: 60
 Test Distance: 6.81 m
 Remarks:

Report No.:

Test Time: 2024/10/8 11:29:41

Luminous Intensity Distribution Curve



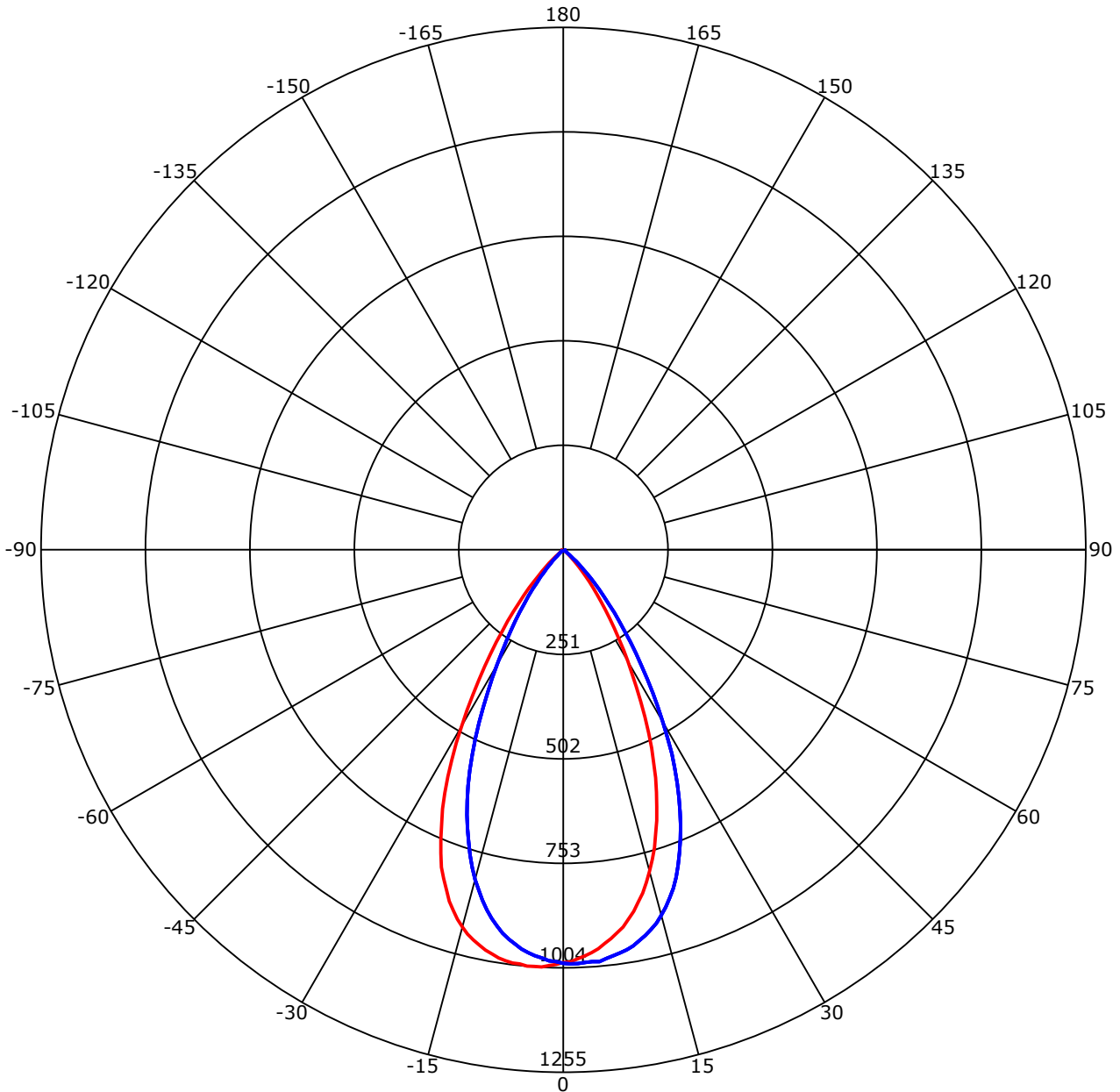
C Range: 0 - 360 Deg
 C Interval: 45.0 Deg
 Test Speed: High
 Temperature: 25
 Operators: QC01
 Test Date: 2024/10/8 11:29:41

G Range: 0 - 90 Deg
 G Interval: 1.0 Deg
 Test System: Huipu CPM-1600B Goniophotometer
 Humidity: 60
 Test Distance: 6.81 m
 Remarks:

Report No.:

Test Time: 2024/10/8 11:29:41

Luminous Intensity Distribution Curve



C0-180 — C90-270 —
 Unit: cd/klm

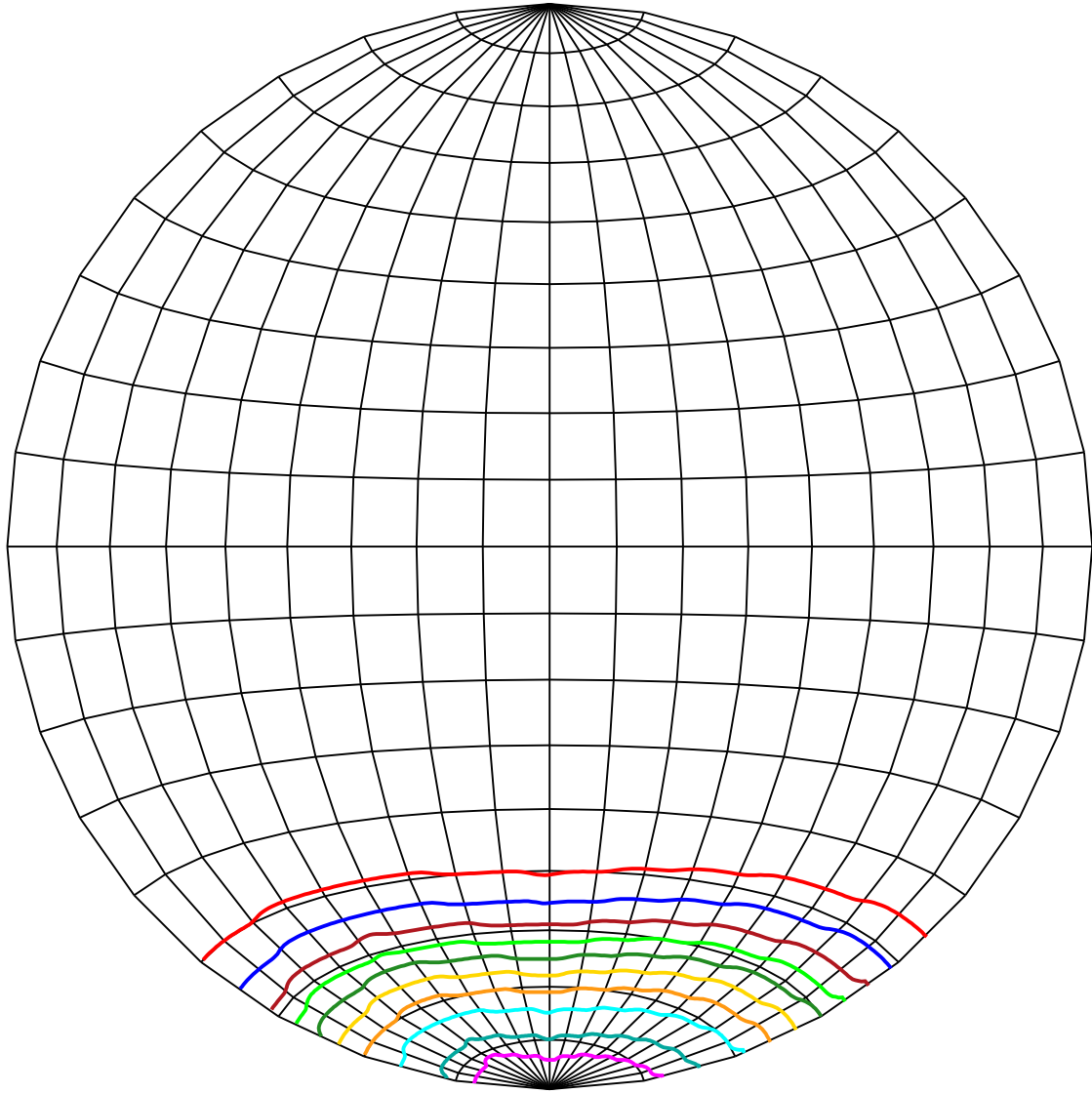
C Range: 0 - 360 Deg
 C Interval: 45.0 Deg
 Test Speed: High
 Temperature: 25
 Operators: QC01
 Test Date: 2024/10/8 11:29:41

G Range: 0 - 90 Deg
 G Interval: 1.0 Deg
 Test System: Huipu CPM-1600B Goniophotometer
 Humidity: 60
 Test Distance: 6.81 m
 Remarks:

Report No.:

Test Time: 2024/10/8 11:29:41

ISOCANDELA DIAGRAM (SPHERE)



Unit of intensity:cd I_{max}(100%): 1004.274 cd

— 954.061(95%I _{max})	— 502.137(50%I _{max})
— 903.847(90%I _{max})	— 401.71(40%I _{max})
— 803.42(80%I _{max})	— 301.282(30%I _{max})
— 702.992(70%I _{max})	— 200.855(20%I _{max})
— 602.565(60%I _{max})	— 100.428(10%I _{max})

C Range: 0 - 360 Deg

C Interval: 45.0 Deg

Test Speed: High

Temperature: 25

Operators: QC01

Test Date: 2024/10/8 11:29:41

G Range: 0 - 90 Deg

G Interval: 1.0 Deg

Test System: Huipu CPM-1600B Goniophotometer

Humidity: 60

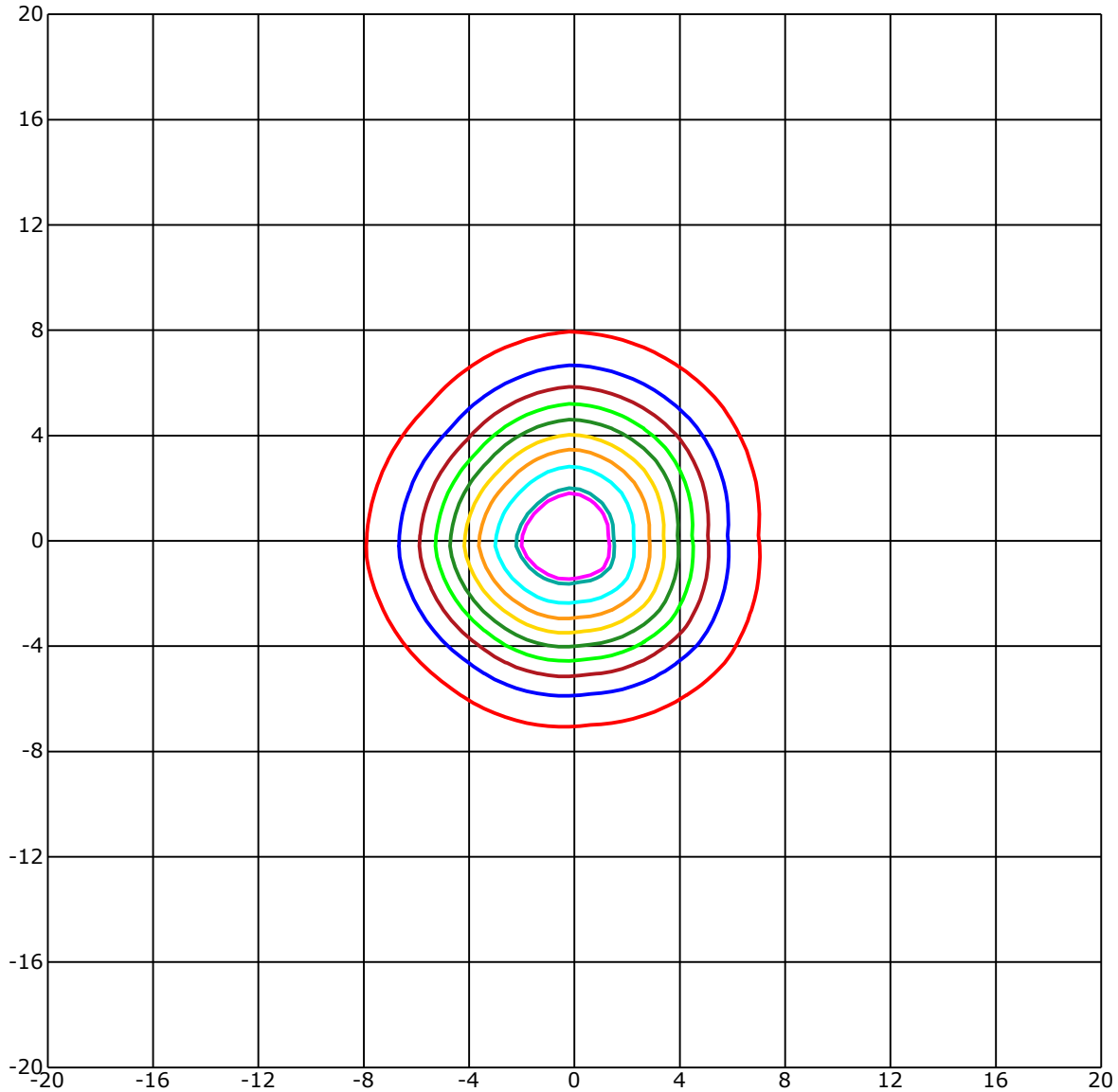
Test Distance: 6.81 m

Remarks:

Report No.:

Test Time: 2024/10/8 11:29:41

ISOLX DIAGRAM



Unit of illumination:lx Height of plane:10.0(m)/32.81(ft)

- | | |
|------------------|------------------|
| — 9.193(92%Emax) | — 4.996(50%Emax) |
| — 8.993(90%Emax) | — 3.997(40%Emax) |
| — 7.994(80%Emax) | — 2.998(30%Emax) |
| — 6.995(70%Emax) | — 1.999(20%Emax) |
| — 5.996(60%Emax) | — 0.999(10%Emax) |

C Range: 0 - 360 Deg

C Interval: 45.0 Deg

Test Speed: High

Temperature: 25

Operators: QC01

Test Date: 2024/10/8 11:29:41

G Range: 0 - 90 Deg

G Interval: 1.0 Deg

Test System: Huipu CPM-1600B Goniophotometer

Humidity: 60

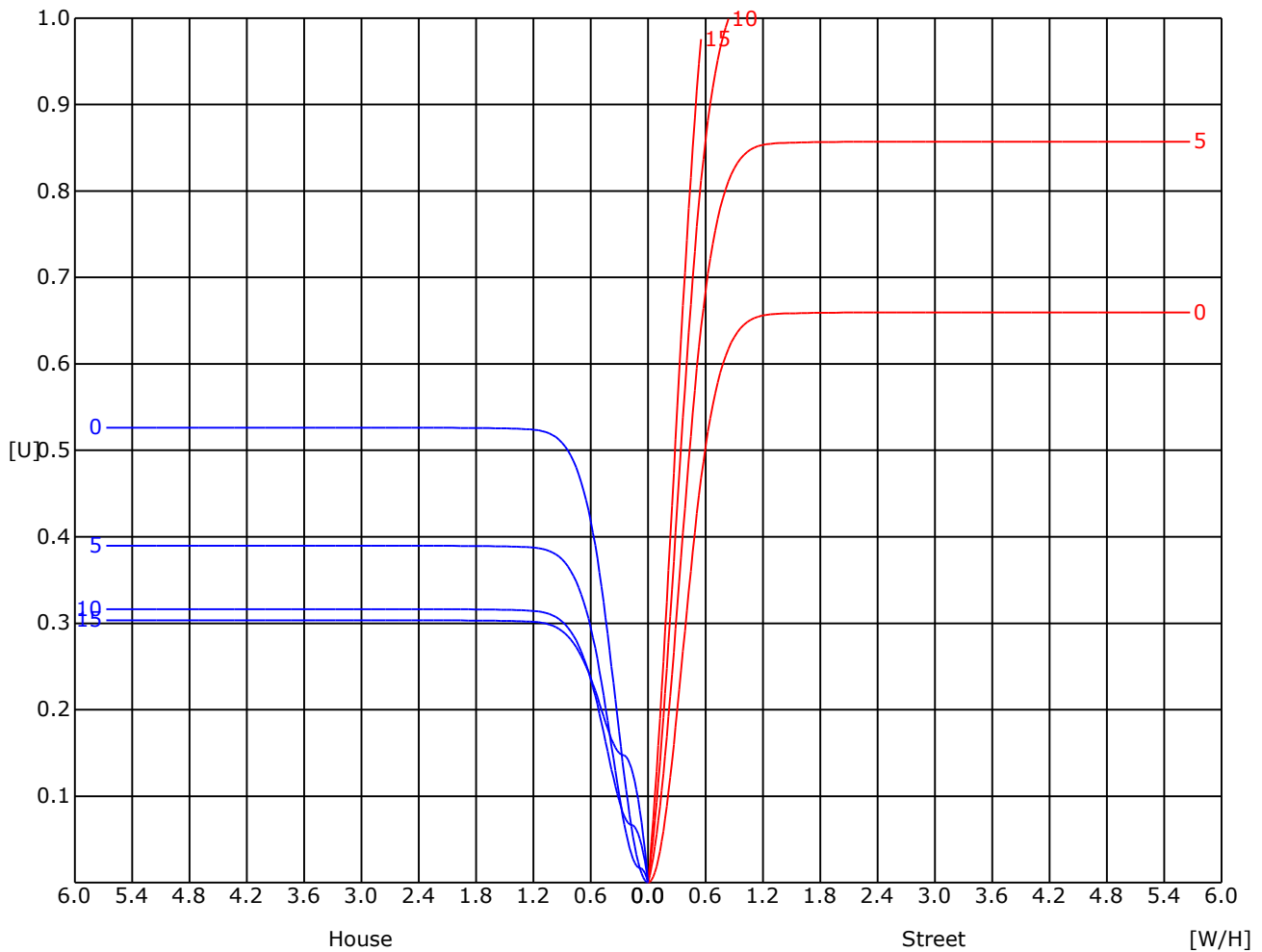
Test Distance: 6.81 m

Remarks:

Report No.:

Test Time: 2024/10/8 11:29:41

UTILIZATION FACTOR DIAGRAM (ROAD)



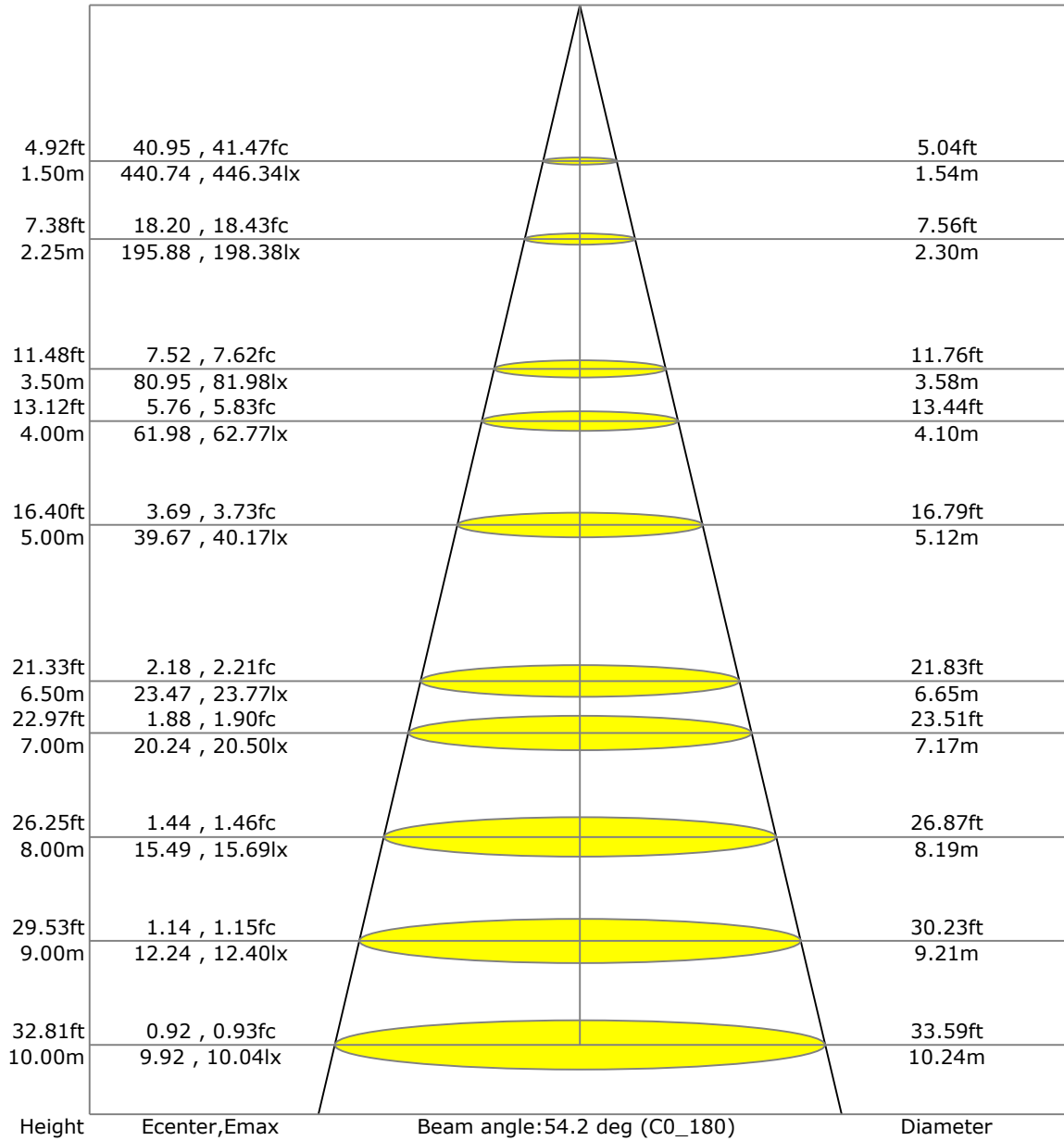
C Range: 0 - 360 Deg
 C Interval: 45.0 Deg
 Test Speed: High
 Temperature: 25
 Operators: QC01
 Test Date: 2024/10/8 11:29:41

G Range: 0 - 90 Deg
 G Interval: 1.0 Deg
 Test System: Huipu CPM-1600B Goniophotometer
 Humidity: 60
 Test Distance: 6.81 m
 Remarks:

Report No.:

Test Time: 2024/10/8 11:29:41

LX-DISTANCE DIAGRAM



C Range: 0 - 360 Deg

C Interval: 45.0 Deg

Test Speed: High

Temperature: 25

Operators: QC01

Test Date: 2024/10/8 11:29:41

G Range: 0 - 90 Deg

G Interval: 1.0 Deg

Test System: Huipu CPM-1600B Goniophotometer

Humidity: 60

Test Distance: 6.81 m

Remarks:

Report No.:

Test Time: 2024/10/8 11:29:41

UGR(Unified Glare Rating) TABLE

RHOCC	70	70	50	50	30	70	70	50	50	30
RHOW	50	30	50	30	30	50	30	50	30	30
RHOF	20	20	20	20	20	20	20	20	20	20
Room Size X	Viewed Endwise					Viewed Crosswise				
2H 2H	18.30	18.35	18.50	18.54	18.78	18.44	18.49	18.64	18.68	18.92
3H	18.28	18.33	18.48	18.52	18.76	18.42	18.47	18.62	18.66	18.90
4H	18.26	18.31	18.47	18.51	18.75	18.40	18.45	18.61	18.65	18.89
6H	18.24	18.29	18.46	18.49	18.74	18.38	18.43	18.60	18.63	18.88
8H	18.23	18.28	18.45	18.49	18.74	18.37	18.42	18.59	18.63	18.88
12H	18.22	18.27	18.45	18.48	18.73	18.36	18.41	18.59	18.62	18.87
4H 2H	18.26	18.31	18.47	18.51	18.75	18.40	18.45	18.61	18.65	18.90
3H	18.22	18.27	18.45	18.48	18.73	18.37	18.42	18.59	18.62	18.88
4H	18.20	18.25	18.43	18.46	18.72	18.34	18.39	18.57	18.61	18.86
6H	18.18	18.23	18.42	18.45	18.71	18.32	18.37	18.56	18.59	18.85
8H	18.17	18.21	18.41	18.44	18.71	18.31	18.36	18.55	18.58	18.85
12H	18.15	18.20	18.40	18.43	18.70	18.29	18.34	18.54	18.57	18.84
8H 4H	18.23	18.28	18.45	18.49	18.74	18.37	18.42	18.59	18.63	18.88
6H	18.14	18.18	18.39	18.42	18.69	18.28	18.32	18.53	18.56	18.83
8H	18.12	18.16	18.38	18.41	18.68	18.26	18.30	18.52	18.55	18.83
12H	18.10	18.14	18.37	18.40	18.68	18.25	18.28	18.51	18.54	18.82
12H 4H	18.15	18.20	18.40	18.43	18.70	18.29	18.34	18.54	18.57	18.84
6H	18.12	18.16	18.38	18.41	18.68	18.26	18.30	18.52	18.55	18.83

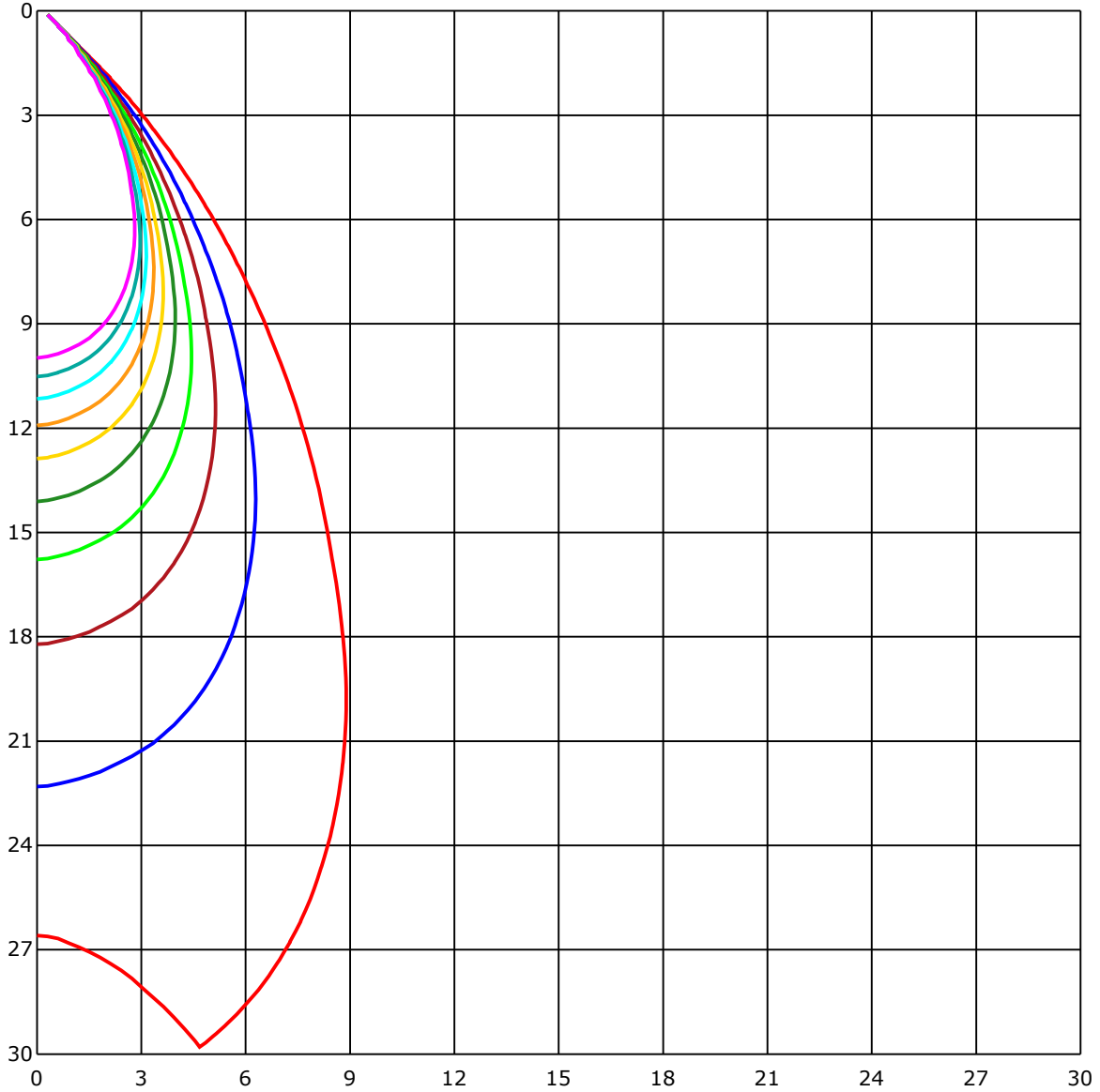
C Range: 0 - 360 Deg
 C Interval: 45.0 Deg
 Test Speed: High
 Temperature: 25
 Operators: QC01
 Test Date: 2024/10/8 11:29:41

G Range: 0 - 90 Deg
 G Interval: 1.0 Deg
 Test System: Huipu CPM-1600B Goniophotometer
 Humidity: 60
 Test Distance: 6.81 m
 Remarks:

Report No.:

Test Time: 2024/10/8 11:29:41

SPACE ISOLX DIAGRAM



Unit of illumination:lx

- | | |
|---------|---------|
| — 9.966 | — 4.983 |
| — 8.97 | — 3.986 |
| — 7.973 | — 2.99 |
| — 6.976 | — 1.993 |
| — 5.98 | — 0.997 |

C Range: 0 - 360 Deg

C Interval: 45.0 Deg

Test Speed: High

Temperature: 25

Operators: QC01

Test Date: 2024/10/8 11:29:41

G Range: 0 - 90 Deg

G Interval: 1.0 Deg

Test System: Huipu CPM-1600B Goniophotometer

Humidity: 60

Test Distance: 6.81 m

Remarks:

Report No.:

Test Time: 2024/10/8 11:29:41

LUMINOUS DISTRIBUTION INTENSITY DATA

Gamma\C	C0	C45	C90	C135	C180	C225	C270	C315	C360	
G0	991.66	993.33	993.61	998.34	991.66	993.33	993.61	998.34	991.66	
G1	989.9	993.42	995.0	997.13	996.11	993.24	989.57	994.26	989.9	
G2	983.36	988.97	994.54	998.48	999.45	991.47	988.27	992.22	983.36	
G3	977.56	985.77	993.05	996.67	1003.39	990.27	982.2	989.94	977.56	
G4	970.19	980.3	992.08	997.5	1003.3	988.69	977.33	984.19	970.19	
G5	962.12	976.77	993.01	992.03	1004.27	985.31	971.49	978.16	962.12	
G6	950.48	969.68	987.35	989.76	1000.38	981.41	964.3	970.93	950.48	
G7	940.97	964.44	982.57	984.89	1000.43	977.19	954.05	963.28	940.97	
G8	929.19	955.07	978.03	979.46	996.95	967.92	944.4	957.53	929.19	
G9	917.41	945.98	972.83	971.9	992.54	958.32	932.39	944.5	917.41	
G10	900.95	935.59	966.2	966.2	986.33	947.79	917.83	932.9	900.95	
G11	884.76	924.23	956.09	953.4	979.42	938.7	901.97	918.8	884.76	
G12	865.47	911.8	947.05	942.78	970.93	922.42	884.49	906.19	865.47	
G13	846.13	898.63	936.1	929.79	962.3	907.9	863.99	887.31	846.13	
G14	823.64	882.49	924.28	917.37	951.41	890.51	842.05	867.23	823.64	
G15	800.08	862.87	909.16	898.82	938.14	871.64	820.16	847.8	800.08	
G16	774.76	841.12	892.93	881.75	923.02	848.31	794.98	824.75	774.76	
G17	747.86	820.49	874.38	857.96	905.68	825.26	766.6	799.01	747.86	
G18	717.72	797.07	854.8	833.98	888.06	797.99	737.43	772.77	717.72	
G19	688.17	773.74	832.54	809.54	863.99	770.96	708.16	744.99	688.17	
G20	656.82	746.89	806.71	782.18	840.43	740.21	677.46	715.17	656.82	
G21	624.04	720.45	778.47	751.94	817.01	708.53	644.67	686.69	624.04	
G22	590.79	691.98	750.32	720.36	786.17	677.0	610.63	654.55	590.79	
G23	555.96	660.81	720.68	687.53	754.26	642.36	576.08	622.41	555.96	
G24	521.55	628.72	689.29	653.53	719.76	604.74	538.84	589.25	521.55	
G25	484.86	597.0	656.5	617.31	686.41	566.53	499.84	553.5	484.86	
G26	446.69	562.73	624.04	580.07	650.61	525.39	461.91	518.11	446.69	
G27	409.5	526.79	589.02	539.63	611.52	486.21	424.43	479.16	409.5	
G28	372.72	489.96	554.98	498.96	571.86	445.63	387.8	441.04	372.72	
G29	338.59	454.07	515.38	459.03	530.31	407.6	352.04	404.4	338.59	
G30	309.05	415.67	478.37	421.19	489.45	370.87	319.3	368.41	309.05	
G31	280.48	380.79	440.48	383.76	449.71	337.48	287.76	335.58	280.48	
G32	251.78	346.38	405.28	347.64	410.61	305.02	259.34	305.71	251.78	
G33	225.25	313.41	369.9	313.09	373.51	274.08	232.02	275.94	225.25	
G34	199.83	283.5	336.41	281.97	337.99	243.61	206.47	249.04	199.83	
G35	175.77	255.81	303.53	252.94	305.25	216.67	182.58	222.93	175.77	
G36	153.46	229.52	273.43	225.76	273.48	192.09	160.37	198.07	153.46	

C Range: 0 - 360 Deg

C Interval: 45.0 Deg

Test Speed: High

Temperature: 25

Operators: QC01

Test Date: 2024/10/8 11:29:41

G Range: 0 - 90 Deg

G Interval: 1.0 Deg

Test System: Huipu CPM-1600B Goniophotometer

Humidity: 60

Test Distance: 6.81 m

Remarks:

Report No.:

Test Time: 2024/10/8 11:29:41

LUMINOUS DISTRIBUTION INTENSITY DATA(Continue 1)

Gamma\C	C0	C45	C90	C135	C180	C225	C270	C315	C360	
G37	133.66	204.38	245.0	199.09	244.31	169.23	139.17	174.61	133.66	
G38	115.57	180.73	219.03	174.84	217.18	147.01	119.74	153.37	115.57	
G39	98.78	158.42	194.18	151.46	191.16	126.42	101.61	133.7	98.78	
G40	83.52	137.69	170.9	130.5	166.49	107.82	85.42	115.94	83.52	
G41	69.75	118.68	148.96	110.42	144.09	91.18	70.72	98.83	69.75	
G42	57.09	101.33	129.57	92.57	123.36	75.55	57.97	83.62	57.09	
G43	45.17	85.61	111.35	75.87	104.81	62.56	46.33	69.84	45.17	
G44	35.52	70.77	94.61	61.49	87.37	50.78	36.41	57.69	35.52	
G45	26.85	57.6	78.61	48.32	71.88	39.98	27.83	46.24	26.85	
G46	19.29	45.17	64.69	37.52	58.57	31.3	20.5	36.78	19.29	
G47	13.08	35.38	52.27	28.34	46.19	24.16	14.33	28.85	13.08	
G48	8.25	26.3	41.37	20.92	36.64	18.32	9.55	22.17	8.25	
G49	4.78	18.78	32.14	14.61	28.57	13.91	5.8	16.37	4.78	
G50	2.27	12.43	24.44	9.69	22.08	10.3	2.92	12.06	2.27	
G51	0.88	7.84	18.36	5.89	16.42	8.02	1.21	8.81	0.88	
G52	0.23	4.5	13.54	3.29	12.48	6.31	0.32	6.86	0.23	
G53	0.0	2.23	9.92	1.62	9.41	5.24	0.0	5.33	0.0	
G54	0.0	0.93	7.65	0.7	7.28	4.41	0.0	4.54	0.0	
G55	0.0	0.23	6.08	0.14	6.03	3.99	0.0	4.03	0.0	
G56	0.0	0.0	5.19	0.0	5.1	3.39	0.0	3.48	0.0	
G57	0.0	0.0	4.36	0.0	4.5	3.2	0.0	3.2	0.0	
G58	0.0	0.0	3.99	0.0	4.03	2.78	0.0	2.78	0.0	
G59	0.0	0.0	3.57	0.0	3.62	2.5	0.0	2.46	0.0	
G60	0.0	0.0	3.06	0.0	3.11	2.13	0.0	2.18	0.0	
G61	0.0	0.0	2.69	0.0	2.83	1.86	0.0	1.76	0.0	
G62	0.0	0.0	2.37	0.0	2.41	1.48	0.0	1.58	0.0	
G63	0.0	0.0	2.04	0.0	2.09	1.3	0.0	1.34	0.0	
G64	0.0	0.0	1.72	0.0	1.76	1.07	0.0	1.25	0.0	
G65	0.0	0.0	1.48	0.0	1.62	0.88	0.0	0.79	0.0	
G66	0.0	0.0	1.3	0.0	1.34	0.74	0.0	0.79	0.0	
G67	0.0	0.0	1.02	0.0	1.16	0.65	0.0	0.65	0.0	
G68	0.0	0.0	0.83	0.0	0.88	0.46	0.0	0.42	0.0	
G69	0.0	0.0	0.6	0.0	0.74	0.32	0.0	0.23	0.0	
G70	0.0	0.0	0.46	0.0	0.56	0.05	0.0	0.14	0.0	
G71	0.0	0.0	0.32	0.0	0.46	0.0	0.0	0.0	0.0	
G72	0.0	0.0	0.23	0.0	0.23	0.0	0.0	0.0	0.0	
G73	0.0	0.0	0.0	0.0	0.14	0.0	0.0	0.0	0.0	

C Range: 0 - 360 Deg

C Interval: 45.0 Deg

Test Speed: High

Temperature: 25

Operators: QC01

Test Date: 2024/10/8 11:29:41

G Range: 0 - 90 Deg

G Interval: 1.0 Deg

Test System: Huipu CPM-1600B Goniophotometer

Humidity: 60

Test Distance: 6.81 m

Remarks:

