

Report No.:

Test Time: 2024/7/3 10:39:26

LUMINAIRE PHOTOMETRIC TEST REPORT

Luminaire Property

Manufacturer: InBright
 Luminaire Type: IBSP101CT055-24°-8.9W
 Lamp Type:
 Luminous Width: 50 mm
 Luminous Length: 50 mm
 Luminous Height: 50 mm

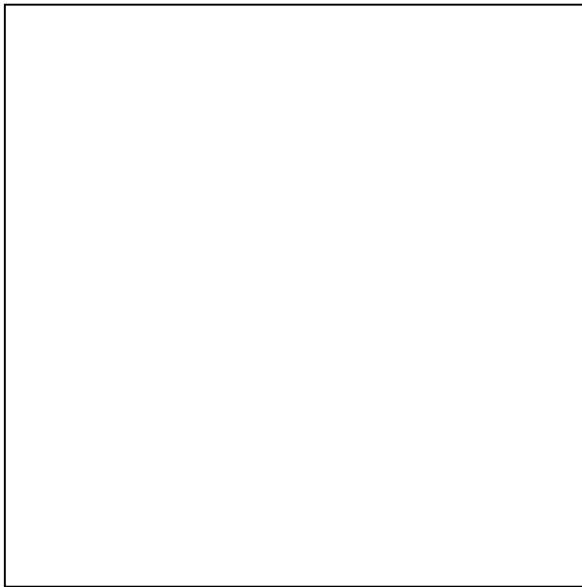
Voltage(V): 219.90 V
 Current(A): 0.0430 A
 Power(W): 8.88 W
 Power Factor: 0.9370
 Lamp Luminous Flux: 889.37

Photometric Results

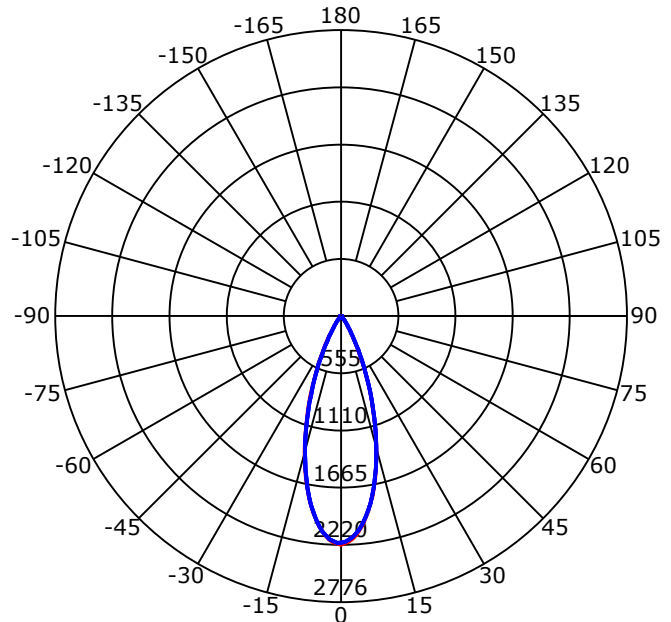
CIE Class: Direct
 Luminaire Luminous Flux: 889.3657 lm
 Downward Ratio: 100.00%
 Luminaire Efficacy Rating(LER): 100.15 lm/W
 Beam Angle(50%) C0-180,C90-270: 35.0,35.1
 Field Angle(10%) C0-180,C90-270: 60.5,60.5
 S/MH C0-180,C90-270: 0.573,0.573

Max. Intensity: 2220.48 cd
 Max.Intensity Angle: C=180 Gamma=0
 Upward Ratio: 0.00%
 Efficacy: 100.00%
 Center Intensity: 2220.48 cd
 Effective Luminous Flux: 793.32 lm
 ERP(ϕ use)(120deg): 880.60 lm

Picture of Luminaire



Luminous Intensity Distribution Curve



Beam Angle(50%) C0-180,C90-270: 35.0 deg,35.1 deg

C0-180 — C90-270 —

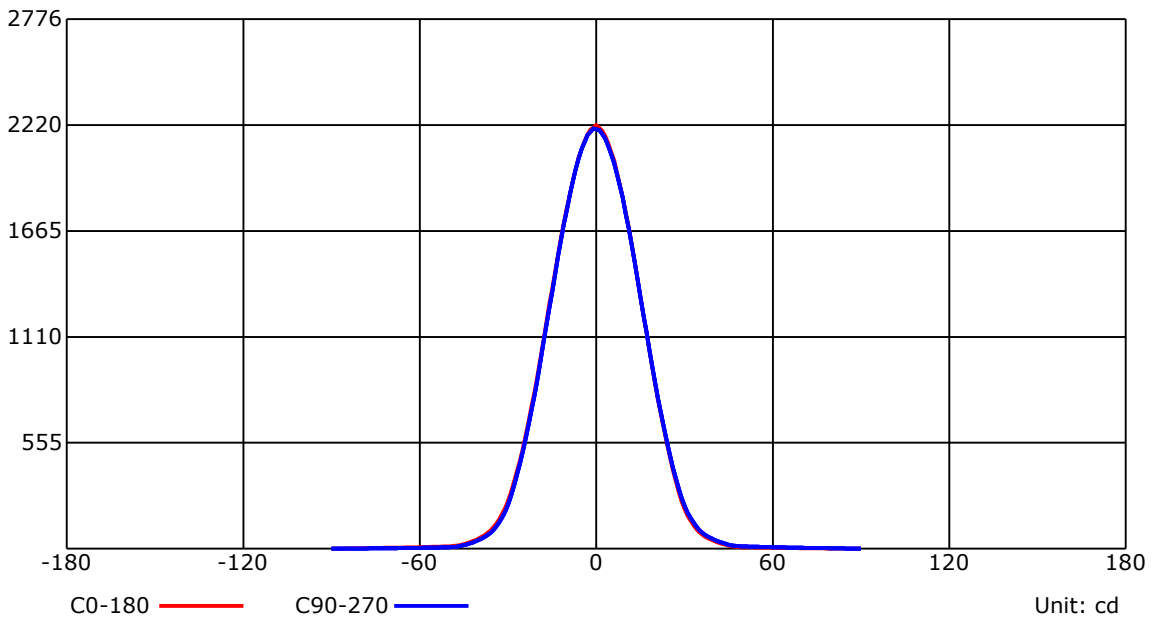
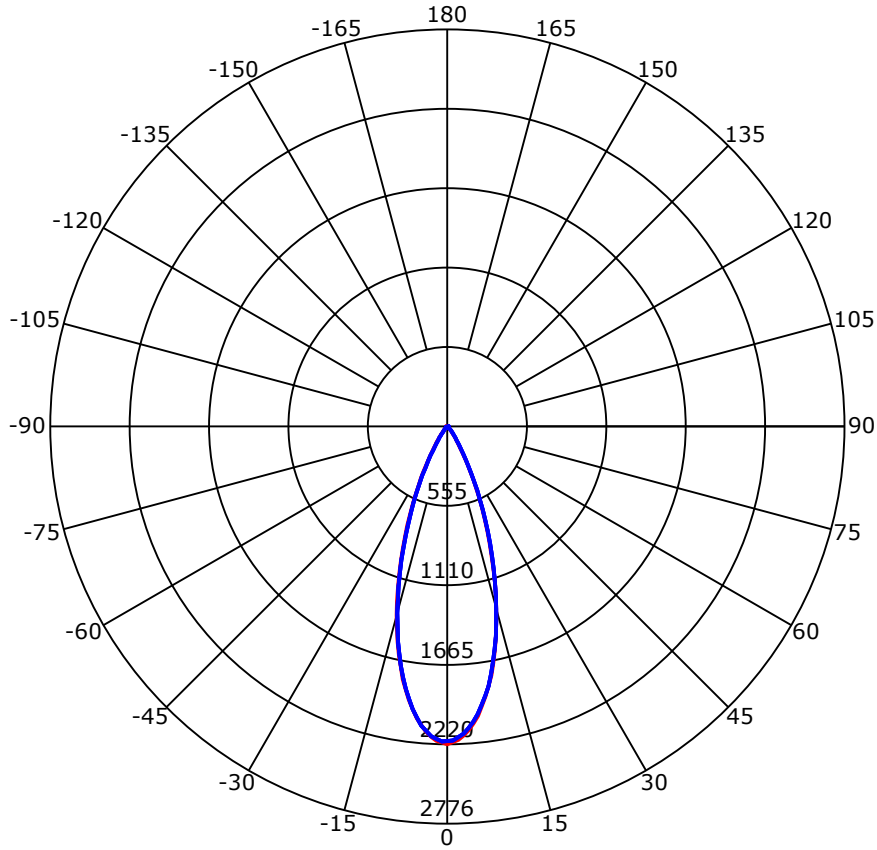
C Range: 0 - 360 Deg
 C Interval: 45.0 Deg
 Test Speed: High
 Temperature: 25
 Operators: QC01
 Test Date: 2024/7/3 10:39:26

G Range: 0 - 90 Deg
 G Interval: 1.0 Deg
 Test System: Huipu CPM-1600B Goniophotometer
 Humidity: 60
 Test Distance: 6.7 m
 Remarks:

Report No.:

Test Time: 2024/7/3 10:39:26

Luminous Intensity Distribution Curve



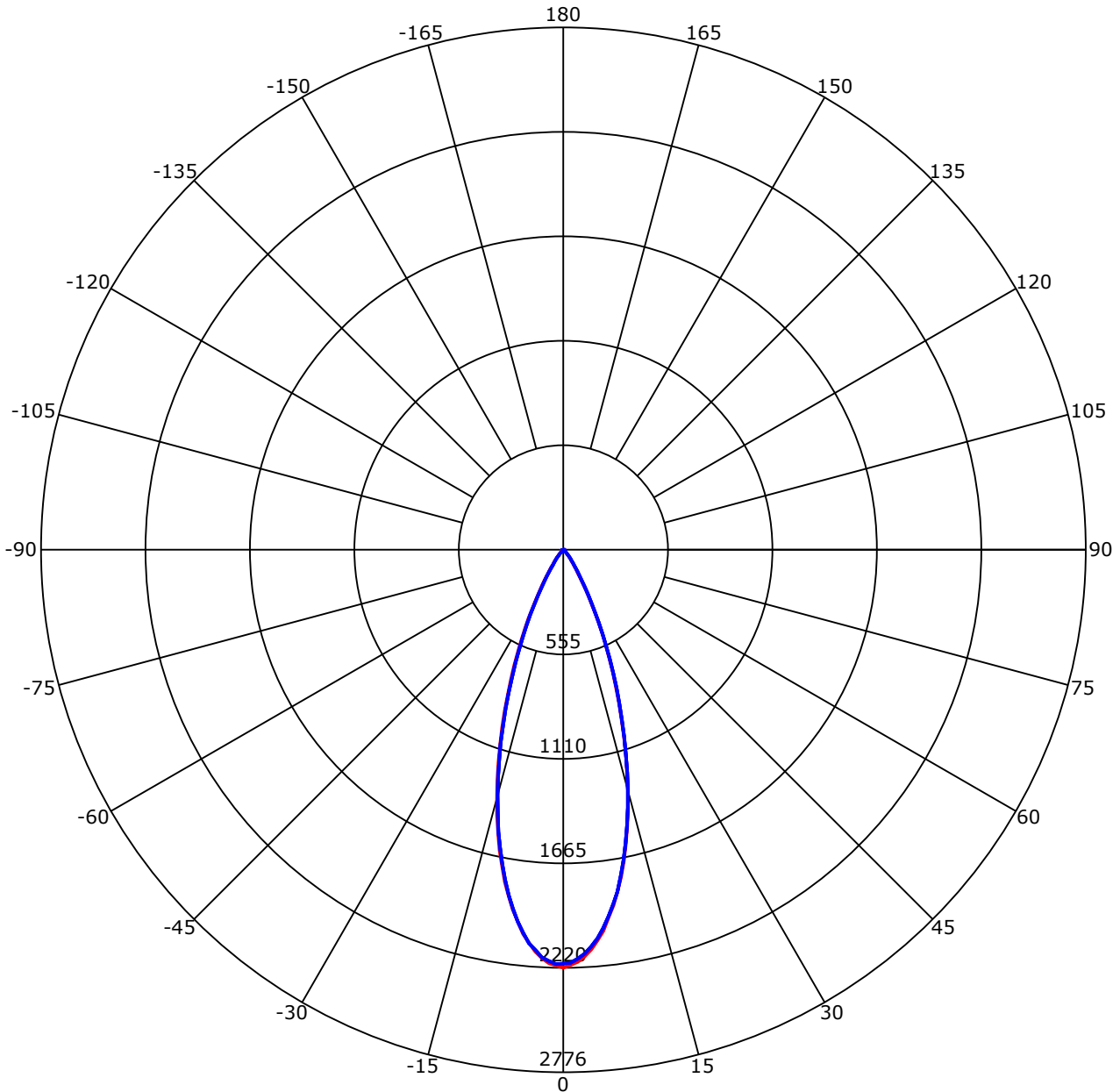
C Range: 0 - 360 Deg
 C Interval: 45.0 Deg
 Test Speed: High
 Temperature: 25
 Operators: QC01
 Test Date: 2024/7/3 10:39:26

G Range: 0 - 90 Deg
 G Interval: 1.0 Deg
 Test System: Huipu CPM-1600B Goniophotometer
 Humidity: 60
 Test Distance: 6.7 m
 Remarks:

Report No.:

Test Time: 2024/7/3 10:39:26

Luminous Intensity Distribution Curve



C0-180 — C90-270 —
 Unit: cd/klm

C Range: 0 - 360 Deg
 C Interval: 45.0 Deg
 Test Speed: High
 Temperature: 25
 Operators: QC01
 Test Date: 2024/7/3 10:39:26

G Range: 0 - 90 Deg
 G Interval: 1.0 Deg
 Test System: Huipu CPM-1600B Goniophotometer
 Humidity: 60
 Test Distance: 6.7 m
 Remarks:

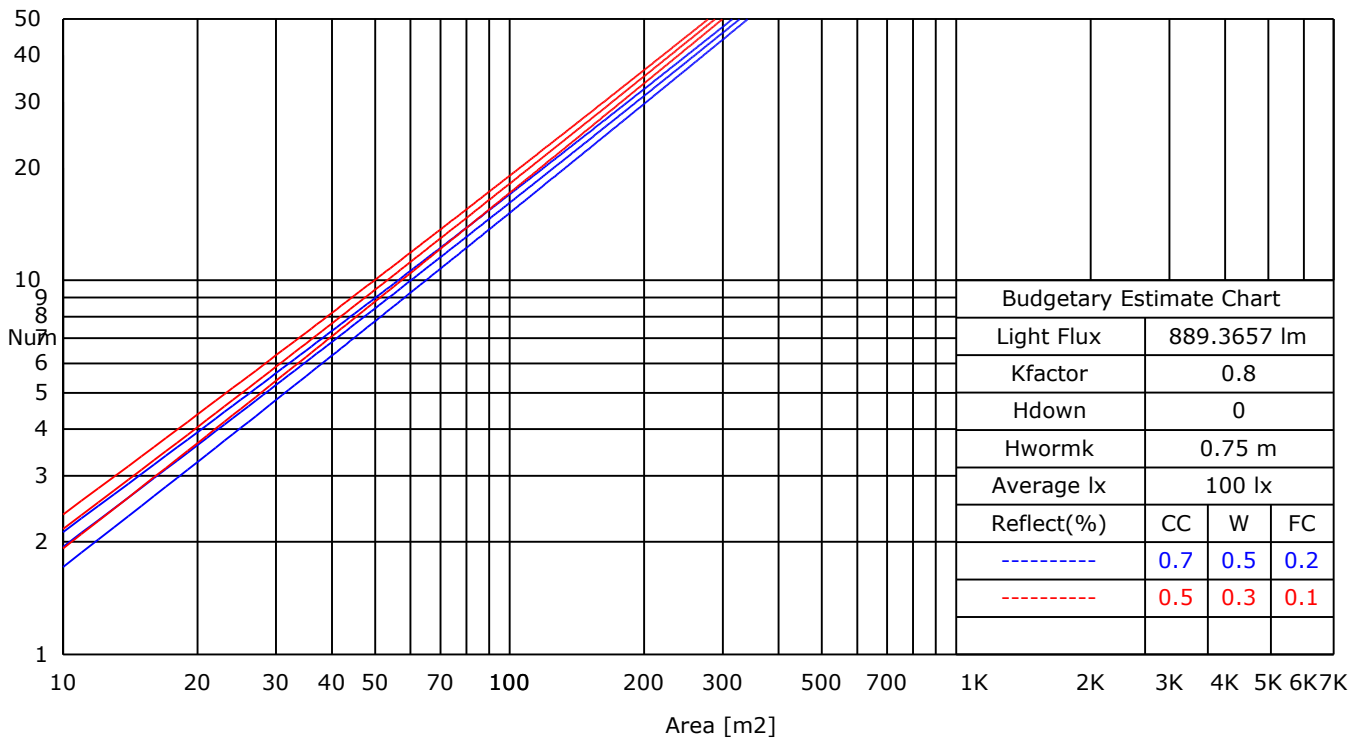
Report No.:

Test Time: 2024/7/3 10:39:26

UTILIZATION FACTORS TABLE

RHOCC	80			70			50			30			10			0
RHOW	50	30	10	50	30	10	50	30	10	50	30	10	50	30	10	0
RCR	COEFFICIENTS OF UTILIZATION FOR RHOFC=20															
0	1.19	1.19	1.19	1.16	1.16	1.16	1.11	1.11	1.11	1.06	1.06	1.06	1.02	1.02	1.02	1.00
1	0.97	0.95	0.93	0.96	0.94	0.91	0.93	0.90	0.88	0.89	0.86	0.83	0.83	0.80	0.77	0.72
2	0.94	0.91	0.90	0.93	0.90	0.88	0.90	0.87	0.84	0.86	0.83	0.80	0.81	0.78	0.75	0.70
3	0.91	0.89	0.87	0.90	0.87	0.85	0.87	0.84	0.82	0.84	0.80	0.78	0.80	0.76	0.73	0.68
4	0.88	0.86	0.85	0.87	0.85	0.83	0.85	0.82	0.79	0.82	0.78	0.75	0.78	0.74	0.71	0.67
5	0.86	0.84	0.83	0.85	0.83	0.81	0.83	0.80	0.77	0.80	0.76	0.73	0.76	0.72	0.69	0.65
6	0.84	0.82	0.81	0.83	0.81	0.79	0.81	0.78	0.75	0.78	0.74	0.72	0.75	0.71	0.67	0.64
7	0.82	0.80	0.79	0.81	0.79	0.78	0.79	0.76	0.74	0.76	0.73	0.70	0.73	0.69	0.66	0.62
8	0.80	0.79	0.78	0.79	0.77	0.76	0.77	0.74	0.72	0.75	0.71	0.69	0.72	0.68	0.65	0.61
9	0.78	0.77	0.76	0.77	0.76	0.75	0.75	0.73	0.71	0.73	0.70	0.67	0.71	0.66	0.63	0.60
10	0.77	0.76	0.75	0.76	0.74	0.73	0.74	0.71	0.70	0.72	0.68	0.66	0.69	0.65	0.62	0.59

LUMINAIRE BUDGETARY ESTIMATE DIAGRAM



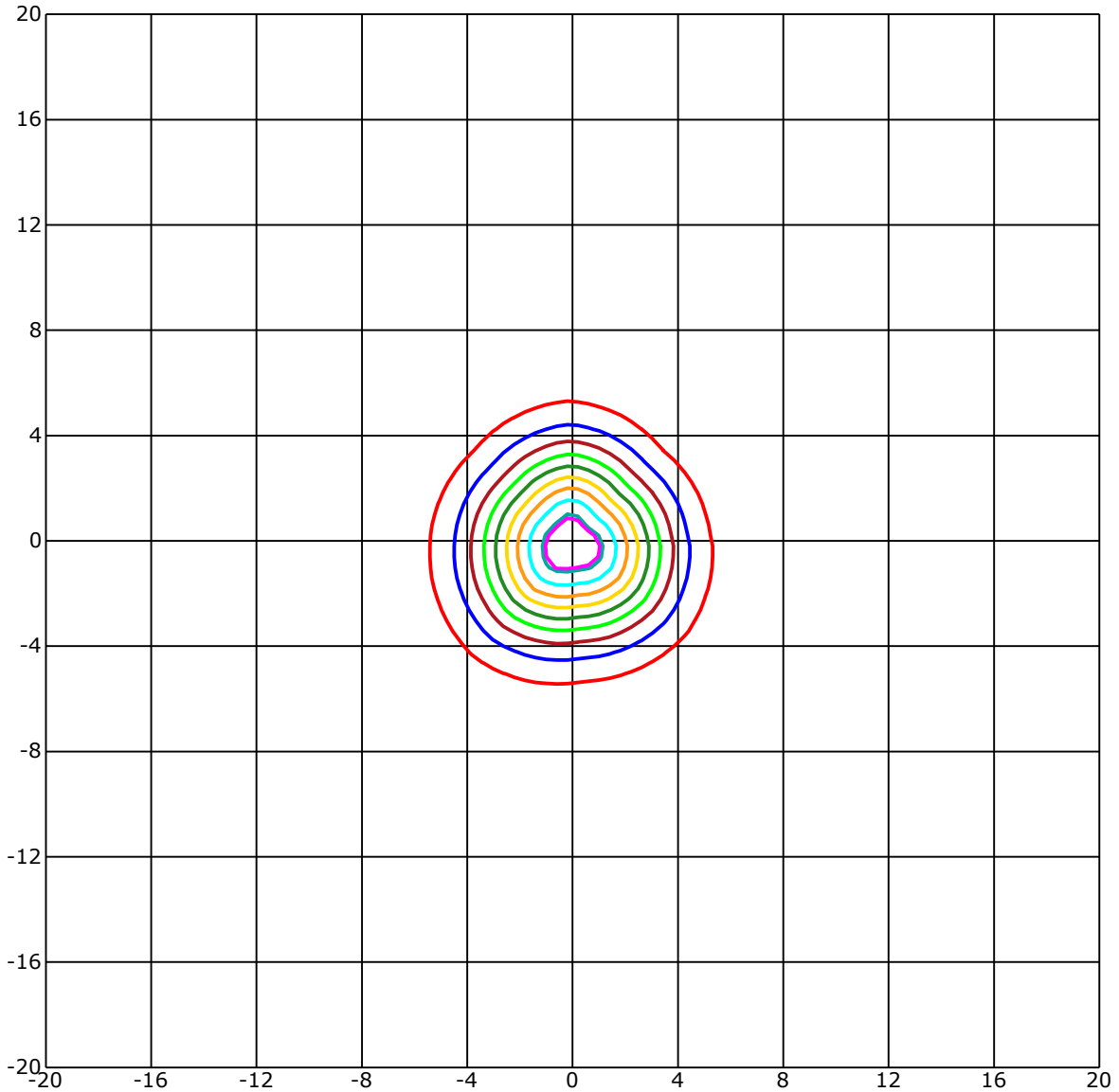
C Range: 0 - 360 Deg
 C Interval: 45.0 Deg
 Test Speed: High
 Temperature: 25
 Operators: QC01
 Test Date: 2024/7/3 10:39:26

G Range: 0 - 90 Deg
 G Interval: 1.0 Deg
 Test System: Huipu CPM-1600B Goniophotometer
 Humidity: 60
 Test Distance: 6.7 m
 Remarks:

Report No.:

Test Time: 2024/7/3 10:39:26

ISOLX DIAGRAM



Unit of illumination:lx Height of plane:10.0(m)/32.81(ft)

— 20.428(92%Emax)	— 11.102(50%Emax)
— 19.984(90%Emax)	— 8.882(40%Emax)
— 17.764(80%Emax)	— 6.661(30%Emax)
— 15.543(70%Emax)	— 4.441(20%Emax)
— 13.323(60%Emax)	— 2.22(10%Emax)

C Range: 0 - 360 Deg
 C Interval: 45.0 Deg
 Test Speed: High
 Temperature: 25
 Operators: QC01
 Test Date: 2024/7/3 10:39:26

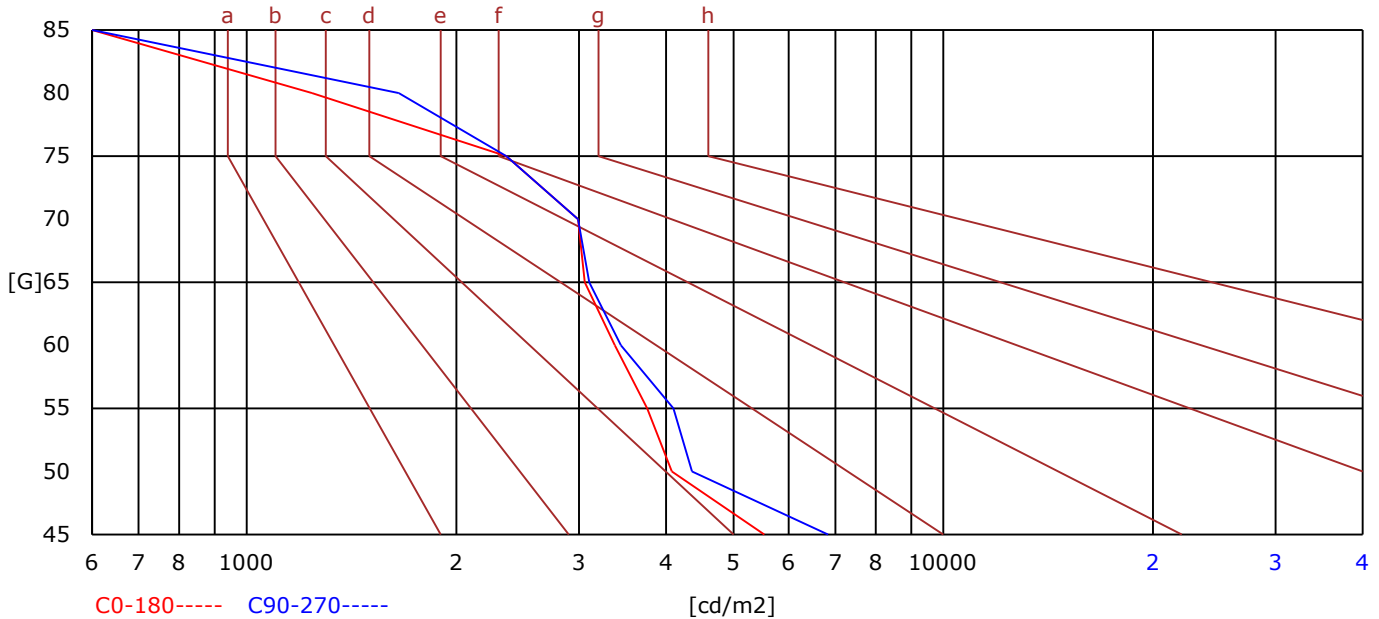
G Range: 0 - 90 Deg
 G Interval: 1.0 Deg
 Test System: Huipu CPM-1600B Goniophotometer
 Humidity: 60
 Test Distance: 6.7 m
 Remarks:

Report No.:

Test Time: 2024/7/3 10:39:26

BRIGHT LIMIT DIAGRAM

C/G	45	50	55	60	65	70	75	80	85
C0	5536	4078	3757	3376	3059	2992	2359	1241	0
C90	6831	4358	4101	3448	3102	2992	2359	1654	0
Dazzle	Quality	Illuminance	---	---	---	---	---	---	---
1.15	A	2000	1000	500	<=300				
1.5	B		2000	1000	500	<=300			
1.85	C			2000	1000	500	<=300		
2.2	D				2000	1000	500	<=300	
2.55	E					2000	1000	500	<=300
---	---	a	b	c	d	e	f	g	h



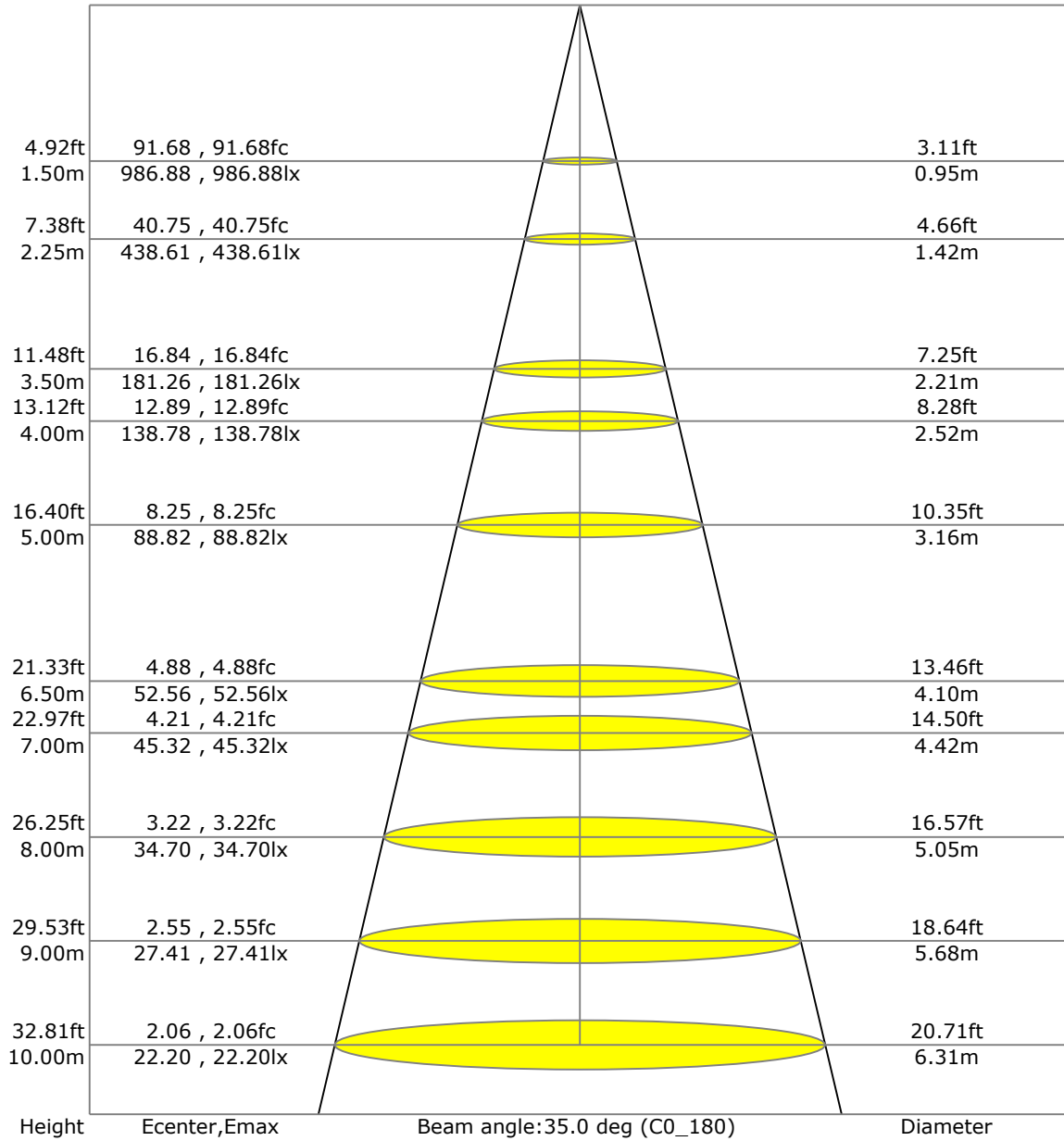
C Range: 0 - 360 Deg
 C Interval: 45.0 Deg
 Test Speed: High
 Temperature: 25
 Operators: QC01
 Test Date: 2024/7/3 10:39:26

G Range: 0 - 90 Deg
 G Interval: 1.0 Deg
 Test System: Huipu CPM-1600B Goniophotometer
 Humidity: 60
 Test Distance: 6.7 m
 Remarks:

Report No.:

Test Time: 2024/7/3 10:39:26

LX-DISTANCE DIAGRAM



C Range: 0 - 360 Deg
 C Interval: 45.0 Deg
 Test Speed: High
 Temperature: 25
 Operators: QC01
 Test Date: 2024/7/3 10:39:26

G Range: 0 - 90 Deg
 G Interval: 1.0 Deg
 Test System: Huipu CPM-1600B Goniophotometer
 Humidity: 60
 Test Distance: 6.7 m
 Remarks:

Report No.:

Test Time: 2024/7/3 10:39:26

UGR(Unified Glare Rating) TABLE

RHOCC	70	70	50	50	30	70	70	50	50	30
RHOW	50	30	50	30	30	50	30	50	30	30
RHOF	20	20	20	20	20	20	20	20	20	20
Room Size X	Viewed Endwise					Viewed Crosswise				
2H 2H	7.84	7.89	8.04	8.08	8.32	8.11	8.16	8.31	8.35	8.59
3H	7.87	7.92	8.08	8.12	8.36	8.12	8.17	8.32	8.36	8.61
4H	7.87	7.92	8.08	8.12	8.37	8.11	8.16	8.32	8.36	8.61
6H	7.86	7.91	8.08	8.11	8.37	8.09	8.15	8.31	8.35	8.60
8H	7.85	7.91	8.07	8.11	8.36	8.09	8.14	8.30	8.34	8.60
12H	7.84	7.90	8.06	8.10	8.36	8.08	8.13	8.30	8.34	8.59
4H 2H	8.27	8.33	8.48	8.52	8.77	8.97	9.03	9.18	9.22	9.47
3H	8.35	8.40	8.57	8.61	8.86	9.03	9.09	9.26	9.29	9.55
4H	8.36	8.42	8.59	8.63	8.89	9.03	9.09	9.26	9.30	9.56
6H	8.36	8.41	8.60	8.63	8.90	9.02	9.07	9.25	9.29	9.55
8H	8.35	8.40	8.59	8.63	8.89	9.00	9.06	9.25	9.28	9.55
12H	8.34	8.39	8.59	8.62	8.89	8.99	9.04	9.24	9.27	9.54
8H 4H	8.35	8.40	8.57	8.61	8.86	9.34	9.39	9.56	9.60	9.85
6H	8.45	8.50	8.70	8.74	9.01	9.46	9.51	9.72	9.75	10.02
8H	8.44	8.49	8.70	8.73	9.01	9.45	9.49	9.71	9.74	10.02
12H	8.43	8.47	8.70	8.73	9.01	9.43	9.48	9.70	9.73	10.01
12H 4H	8.45	8.50	8.69	8.73	9.00	9.58	9.63	9.83	9.86	10.13
6H	8.44	8.48	8.70	8.73	9.01	9.57	9.62	9.83	9.86	10.14

C Range: 0 - 360 Deg
 C Interval: 45.0 Deg
 Test Speed: High
 Temperature: 25
 Operators: QC01
 Test Date: 2024/7/3 10:39:26

G Range: 0 - 90 Deg
 G Interval: 1.0 Deg
 Test System: Huipu CPM-1600B Goniophotometer
 Humidity: 60
 Test Distance: 6.7 m
 Remarks:

Report No.:

Test Time: 2024/7/3 10:39:26

ZONAL LUMINOUS FLUX TABLE

Gamma [deg]	I _{mean} [cd]	Zonal Flux [lm]	Sum Flux [lm]	Zonal Flux [%]	Sum Flux [%]
0	2197.95	0.00	0.00	0.00	0.00
5	2119.91	51.10	51.10	5.75	5.75
10	1840.53	137.24	188.35	15.43	21.18
15	1427.63	183.12	371.47	20.59	41.77
20	973.41	181.22	552.68	20.38	62.14
25	574.25	143.02	695.70	16.08	78.22
30	277.88	90.04	785.75	10.12	88.35
35	120.03	46.48	832.22	5.23	93.57
40	55.09	23.46	855.68	2.64	96.21
45	24.86	12.09	867.77	1.36	97.57
50	10.91	5.62	873.39	0.63	98.20
55	8.36	3.89	877.29	0.44	98.64
60	6.69	3.31	880.60	0.37	99.01
65	5.13	2.72	883.32	0.31	99.32
70	4.07	2.22	885.54	0.25	99.57
75	3.04	1.76	887.30	0.20	99.77
80	2.01	1.25	888.54	0.14	99.91
85	0.86	0.66	889.20	0.07	99.98
90	0.03	0.16	889.37	0.02	100.00

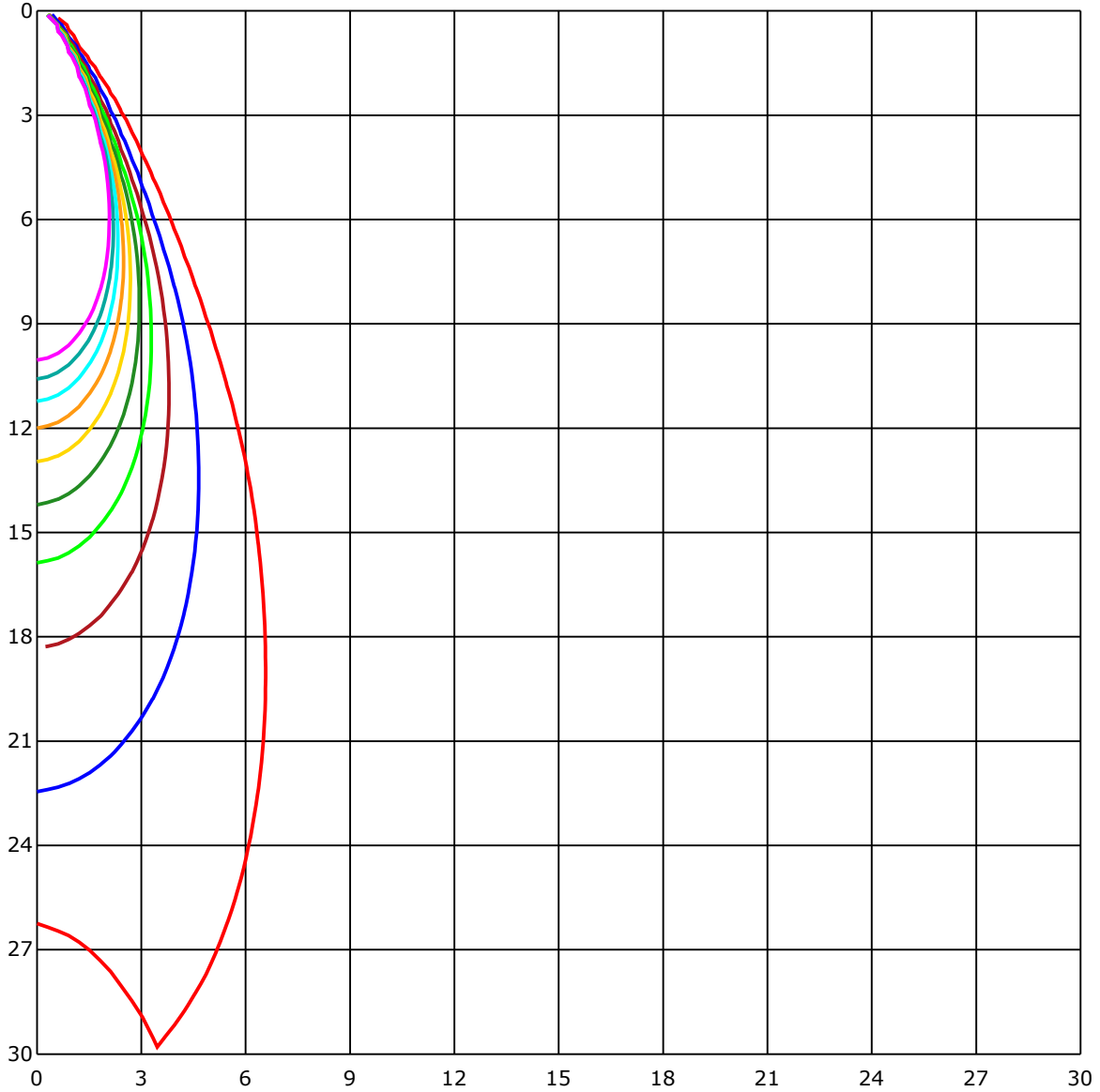
C Range: 0 - 360 Deg
 C Interval: 45.0 Deg
 Test Speed: High
 Temperature: 25
 Operators: QC01
 Test Date: 2024/7/3 10:39:26

G Range: 0 - 90 Deg
 G Interval: 1.0 Deg
 Test System: Huipu CPM-1600B Goniophotometer
 Humidity: 60
 Test Distance: 6.7 m
 Remarks:

Report No.:

Test Time: 2024/7/3 10:39:26

SPACE ISOLX DIAGRAM



Unit of illumination:lx

- | | |
|----------|----------|
| — 22.028 | — 11.014 |
| — 19.825 | — 8.811 |
| — 17.623 | — 6.608 |
| — 15.42 | — 4.406 |
| — 13.217 | — 2.203 |

C Range: 0 - 360 Deg
 C Interval: 45.0 Deg
 Test Speed: High
 Temperature: 25
 Operators: QC01
 Test Date: 2024/7/3 10:39:26

G Range: 0 - 90 Deg
 G Interval: 1.0 Deg
 Test System: Huipu CPM-1600B Goniophotometer
 Humidity: 60
 Test Distance: 6.7 m
 Remarks:

Report No.:

Test Time: 2024/7/3 10:39:26

LUMINOUS DISTRIBUTION INTENSITY DATA

Gamma\C	C0	C45	C90	C135	C180	C225	C270	C315	C360	
G0	2220.48	2173.17	2198.62	2199.52	2220.48	2173.17	2198.62	2199.52	2220.48	
G1	2206.07	2146.46	2194.13	2179.81	2208.18	2191.53	2201.68	2204.64	2206.07	
G2	2190.95	2114.63	2173.48	2152.16	2197.64	2197.9	2185.51	2209.44	2190.95	
G3	2163.25	2075.94	2149.33	2115.89	2172.63	2199.48	2168.82	2191.13	2163.25	
G4	2128.46	2015.47	2113.69	2074.05	2138.83	2184.3	2131.6	2172.86	2128.46	
G5	2083.26	1959.54	2071.54	2020.1	2095.69	2161.41	2098.34	2143.5	2083.26	
G6	2035.63	1892.47	2021.35	1961.65	2052.06	2123.48	2044.52	2101.62	2035.63	
G7	1970.0	1824.02	1962.37	1895.97	1989.7	2092.86	1990.51	2057.53	1970.0	
G8	1908.41	1745.86	1900.33	1822.31	1929.91	2036.7	1925.33	2005.64	1908.41	
G9	1837.21	1666.18	1838.83	1746.67	1860.02	1979.51	1858.49	1937.32	1837.21	
G10	1766.02	1584.3	1756.05	1663.76	1793.22	1915.28	1780.43	1870.43	1766.02	
G11	1682.7	1496.45	1674.98	1576.63	1711.07	1845.38	1701.87	1796.63	1682.7	
G12	1596.78	1407.89	1591.67	1491.16	1632.96	1771.18	1617.43	1713.45	1596.78	
G13	1507.81	1312.31	1504.85	1398.86	1543.81	1700.66	1535.82	1634.4	1507.81	
G14	1414.75	1219.93	1412.78	1307.38	1455.87	1615.37	1440.25	1554.72	1414.75	
G15	1320.8	1128.04	1321.52	1214.19	1365.69	1531.2	1350.47	1464.09	1320.8	
G16	1227.79	1032.65	1229.94	1122.97	1276.67	1442.68	1256.11	1372.69	1227.79	
G17	1134.6	944.8	1137.51	1029.1	1182.99	1351.19	1167.41	1282.33	1134.6	
G18	1041.58	862.29	1044.37	942.24	1088.99	1260.38	1078.39	1188.24	1041.58	
G19	948.08	776.73	956.92	854.12	999.79	1169.7	984.17	1097.74	948.08	
G20	860.81	695.35	871.09	770.72	913.56	1079.69	894.03	1003.74	860.81	
G21	777.94	622.67	787.55	690.14	827.77	991.17	809.19	912.16	777.94	
G22	697.23	550.26	705.9	617.64	747.33	901.48	727.31	828.76	697.23	
G23	621.59	483.73	631.92	548.96	668.77	818.88	651.31	748.77	621.59	
G24	551.65	416.04	560.99	481.67	597.26	735.03	578.9	672.45	551.65	
G25	481.67	353.46	493.61	419.14	527.64	660.29	510.94	597.26	481.67	
G26	415.28	297.98	427.53	359.34	463.94	589.68	446.52	526.07	415.28	
G27	352.3	251.56	367.87	306.28	404.1	521.76	384.57	459.94	352.3	
G28	296.0	212.28	313.6	260.0	349.24	457.97	328.42	397.68	296.0	
G29	246.58	178.75	265.66	220.05	297.85	397.59	277.55	339.01	246.58	
G30	207.71	149.3	225.53	185.49	253.22	341.52	232.75	286.17	207.71	
G31	173.77	126.28	190.78	155.95	215.74	290.71	194.96	239.44	173.77	
G32	146.07	106.25	162.14	130.94	183.6	247.57	163.26	201.51	146.07	
G33	122.68	90.0	137.32	110.2	155.05	210.4	137.72	169.77	122.68	
G34	103.11	76.13	115.64	93.73	132.02	179.65	115.86	144.1	103.11	
G35	86.68	64.6	98.31	78.92	112.23	152.36	98.49	122.15	86.68	
G36	73.53	54.99	84.3	66.93	96.24	128.74	82.96	104.28	73.53	

C Range: 0 - 360 Deg
 C Interval: 45.0 Deg
 Test Speed: High
 Temperature: 25
 Operators: QC01
 Test Date: 2024/7/3 10:39:26

G Range: 0 - 90 Deg
 G Interval: 1.0 Deg
 Test System: Huipu CPM-1600B Goniophotometer
 Humidity: 60
 Test Distance: 6.7 m
 Remarks:

Report No.:

Test Time: 2024/7/3 10:39:26

LUMINOUS DISTRIBUTION INTENSITY DATA(Continue 1)

Gamma\C	C0	C45	C90	C135	C180	C225	C270	C315	C360	
G37	62.89	46.6	72.99	57.14	82.28	109.8	70.84	89.29	62.89	
G38	54.27	40.0	63.12	49.29	71.38	94.04	60.74	77.21	54.27	
G39	46.69	34.3	55.17	41.52	61.86	81.3	52.84	67.07	46.69	
G40	39.95	29.0	48.12	34.97	53.73	70.43	44.98	58.81	39.95	
G41	33.89	24.64	41.43	29.27	46.33	60.56	38.56	51.85	33.89	
G42	28.91	19.93	35.42	24.6	39.95	52.97	32.99	45.2	28.91	
G43	24.33	15.89	30.12	19.84	34.16	45.65	27.88	38.87	24.33	
G44	20.07	12.52	25.18	15.76	29.0	39.64	23.03	33.67	20.07	
G45	16.12	9.79	20.78	12.08	24.11	33.89	19.17	28.77	16.12	
G46	12.93	8.21	17.1	9.65	19.98	28.77	15.26	24.55	12.93	
G47	10.37	7.72	14.72	8.17	17.06	24.15	11.9	20.34	10.37	
G48	8.8	7.18	13.47	7.59	14.77	19.8	9.43	16.92	8.8	
G49	7.86	6.96	12.57	7.23	13.47	16.52	8.08	14.63	7.86	
G50	7.45	6.55	11.85	7.0	12.61	14.41	7.5	13.56	7.45	
G51	7.05	6.33	11.4	6.55	12.12	13.29	7.09	12.48	7.05	
G52	6.82	6.19	10.95	6.42	11.63	12.34	6.73	11.94	6.82	
G53	6.37	5.97	10.55	6.37	11.13	11.85	6.37	11.13	6.37	
G54	6.19	5.61	10.1	6.02	10.73	11.49	6.15	10.59	6.19	
G55	5.93	5.39	9.74	5.88	10.23	10.86	5.97	10.23	5.93	
G56	5.84	4.94	9.25	5.48	9.83	10.37	5.57	9.79	5.84	
G57	5.43	4.8	8.93	5.21	9.43	10.1	5.3	9.38	5.43	
G58	5.21	4.71	8.48	4.94	8.89	9.52	4.98	9.16	5.21	
G59	4.89	4.53	8.21	4.62	8.57	9.29	4.8	8.57	4.89	
G60	4.67	4.22	7.9	4.31	8.21	8.66	4.53	8.17	4.67	
G61	4.44	4.04	7.63	3.91	7.81	8.44	4.44	7.99	4.44	
G62	4.22	3.68	7.0	3.73	7.41	8.08	4.13	7.63	4.22	
G63	4.0	3.64	6.73	3.59	6.96	7.77	3.82	7.18	4.0	
G64	3.64	3.41	6.42	3.32	6.78	7.23	3.5	6.78	3.64	
G65	3.5	3.23	6.24	3.28	6.42	6.87	3.28	6.42	3.5	
G66	3.46	3.1	5.79	3.01	6.15	6.51	3.14	6.33	3.46	
G67	3.14	2.96	5.57	2.83	6.06	6.33	3.01	5.93	3.14	
G68	3.19	2.69	5.34	2.83	5.75	6.11	2.92	5.84	3.19	
G69	2.83	2.6	5.16	2.56	5.34	5.84	2.92	5.34	2.83	
G70	2.65	2.56	4.89	2.56	5.25	5.57	2.42	5.21	2.65	
G71	2.47	2.38	4.62	2.24	4.89	5.25	2.42	5.03	2.47	
G72	2.38	2.06	4.49	2.02	4.67	5.03	2.33	4.71	2.38	
G73	2.33	1.8	4.17	1.84	4.49	4.98	2.11	4.4	2.33	

C Range: 0 - 360 Deg
 C Interval: 45.0 Deg
 Test Speed: High
 Temperature: 25
 Operators: QC01
 Test Date: 2024/7/3 10:39:26

G Range: 0 - 90 Deg
 G Interval: 1.0 Deg
 Test System: Huipu CPM-1600B Goniophotometer
 Humidity: 60
 Test Distance: 6.7 m
 Remarks:

Report No.:

Test Time: 2024/7/3 10:39:26

LUMINOUS DISTRIBUTION INTENSITY DATA(Continue 2)

Gamma\C	C0	C45	C90	C135	C180	C225	C270	C315	C360	
G74	2.15	1.62	3.95	1.71	4.22	4.67	1.8	4.17	2.15	
G75	1.84	1.53	3.91	1.53	4.13	4.22	1.75	4.08	1.84	
G76	1.66	1.39	3.55	1.48	3.73	4.08	1.53	3.77	1.66	
G77	1.3	1.12	3.32	1.26	3.59	3.82	1.48	3.55	1.3	
G78	1.26	0.94	3.23	1.12	3.19	3.64	1.21	3.32	1.26	
G79	1.21	0.81	2.92	0.85	2.96	3.41	0.99	2.96	1.21	
G80	0.94	0.54	2.47	0.72	2.78	3.14	0.9	2.65	0.94	
G81	0.76	0.4	2.29	0.45	2.47	2.87	0.63	2.38	0.76	
G82	0.67	0.09	1.93	0.36	2.42	2.69	0.4	2.38	0.67	
G83	0.22	0.0	1.66	0.0	1.93	2.29	0.27	2.02	0.22	
G84	0.13	0.0	1.39	0.0	1.71	1.89	0.0	1.75	0.13	
G85	0.0	0.0	1.21	0.0	1.35	1.62	0.0	1.39	0.0	
G86	0.0	0.0	0.72	0.0	1.08	1.44	0.0	1.26	0.0	
G87	0.0	0.0	0.27	0.0	0.72	1.21	0.0	0.81	0.0	
G88	0.0	0.0	0.0	0.0	0.22	0.67	0.0	0.45	0.0	
G89	0.0	0.0	0.0	0.0	0.0	0.27	0.0	0.0	0.0	
G90	0.0	0.0	0.0	0.0	0.0	0.27	0.0	0.0	0.0	

C Range: 0 - 360 Deg
C Interval: 45.0 Deg
Test Speed: High
Temperature: 25
Operators: QC01
Test Date: 2024/7/3 10:39:26

G Range: 0 - 90 Deg
G Interval: 1.0 Deg
Test System: Huipu CPM-1600B Goniophotometer
Humidity: 60
Test Distance: 6.7 m
Remarks: